



2022/2023 Winter Meeting

Williams

Charlotte, North Carolina – October 19th @ 9:30 am – 12:00 noon

Atlanta, Georgia – October 20th @ 9:30 am – 12:00 noon

Newark, New Jersey – October 25th @ 9:30 am – 12:00 noon

Houston, Texas – October 27th @ 1:30 pm – 4:00 pm



Forward-Looking Statements

- The reports, filings, and other public announcements of The Williams Companies, Inc. (Williams) may contain or incorporate by reference statements that do not directly or exclusively relate to historical facts. Such statements are “forward-looking statements” within the meaning of Section 27A of the Securities Act of 1933, as amended (Securities Act), and Section 21E of the Securities Exchange Act of 1934, as amended (Exchange Act). These forward-looking statements relate to anticipated financial performance, management’s plans and objectives for future operations, business prospects, outcome of regulatory proceedings, market conditions, and other matters. We make these forward-looking statements in reliance on the safe harbor protections provided under the Private Securities Litigation Reform Act of 1995.
- All statements, other than statements of historical facts, included in this report that address activities, events, or developments that we expect, believe, or anticipate will exist or may occur in the future, are forward-looking statements. Forward-looking statements can be identified by various forms of words such as “anticipates,” “believes,” “seeks,” “could,” “may,” “should,” “continues,” “estimates,” “expects,” “forecasts,” “intends,” “might,” “goals,” “objectives,” “targets,” “planned,” “potential,” “projects,” “scheduled,” “will,” “assumes,” “guidance,” “outlook,” “in-service date,” or other similar expressions. These forward-looking statements are based on management’s beliefs and assumptions and on information currently available to management and include, among others, statements regarding:
 - Levels of dividends to Williams stockholders;
 - Future credit ratings of Williams and its affiliates;
 - Amounts and nature of future capital expenditures;
 - Expansion and growth of our business and operations;
 - Expected in-service dates for capital projects;
 - Financial condition and liquidity;
 - Business strategy;
 - Cash flow from operations or results of operations;
 - Seasonality of certain business components;
 - Natural gas, natural gas liquids, and crude oil prices, supply, and demand;
 - Demand for our services;
 - The impact of the coronavirus (COVID-19) pandemic.

Forward-Looking Statements (cont'd)

- **Forward-looking statements are based on numerous assumptions, uncertainties, and risks that could cause future events or results to be materially different from those stated or implied in this report. Many of the factors that will determine these results are beyond our ability to control or predict. Specific factors that could cause actual results to differ from results contemplated by the forward-looking statements include, among others, the following:**
 - Availability of supplies, market demand, and volatility of prices;
 - Development and rate of adoption of alternative energy sources;
 - The impact of existing and future laws and regulations, the regulatory environment, environmental matters, and litigation, as well as our ability to obtain necessary permits and approvals, and achieve favorable rate proceeding outcomes;
 - Our exposure to the credit risk of our customers and counterparties;
 - Our ability to acquire new businesses and assets and successfully integrate those operations and assets into existing businesses as well as successfully expand our facilities, and to consummate asset sales on acceptable terms;
 - Whether we are able to successfully identify, evaluate, and timely execute our capital projects and investment opportunities;
 - The strength and financial resources of our competitors and the effects of competition;
 - The amount of cash distributions from and capital requirements of our investments and joint ventures in which we participate;
 - Whether we will be able to effectively execute our financing plan;
 - Increasing scrutiny and changing expectations from stakeholders with respect to our environmental, social, and governance practices;
 - The physical and financial risks associated with climate change;
 - The impacts of operational and developmental hazards and unforeseen interruptions;
 - The risks resulting from outbreaks or other public health crises, including COVID-19;
 - Risks associated with weather and natural phenomena, including climate conditions and physical damage to our facilities;
 - Acts of terrorism, cybersecurity incidents, and related disruptions;
 - Our costs and funding obligations for defined benefit pension plans and other postretirement benefit plans;
 - Changes in maintenance and construction costs, as well as our ability to obtain sufficient construction-related inputs, including skilled labor;
 - Inflation, interest rates, and general economic conditions (including future disruptions and volatility in the global credit markets and the impact of these events on customers and suppliers);
 - Risks related to financing, including restrictions stemming from debt agreements, future changes in credit ratings as determined by nationally recognized credit rating agencies, and the availability and cost of capital;

Forward-Looking Statements (cont'd)

- The ability of the members of the Organization of Petroleum Exporting Countries and other oil exporting nations to agree to and maintain oil price and production controls and the impact on domestic production;
 - Changes in the current geopolitical situation;
 - Whether we are able to pay current and expected levels of dividends;
 - Changes in U.S. governmental administration and policies;
 - Additional risks described in our filings with the Securities and Exchange Commission (SEC).
- **Given the uncertainties and risk factors that could cause our actual results to differ materially from those contained in any forward-looking statement, we caution investors not to unduly rely on our forward-looking statements. We disclaim any obligations to and do not intend to update the above list or announce publicly the result of any revisions to any of the forward-looking statements to reflect future events or developments.**
 - **In addition to causing our actual results to differ, the factors listed above and referred to below may cause our intentions to change from those statements of intention set forth in this report. Such changes in our intentions may also cause our results to differ. We may change our intentions, at any time and without notice, based upon changes in such factors, our assumptions, or otherwise.**
 - **Because forward-looking statements involve risks and uncertainties, we caution that there are important factors, in addition to those listed above, that may cause actual results to differ materially from those contained in the forward-looking statements. For a detailed discussion of those factors, see Part I, Item 1A. Risk Factors in our Annual Report on Form 10-K for the year ended December 31, 2020, as filed with the SEC on February 24, 2021.**

Agenda

- **Welcome**
 - Safety Moment
- **Williams Update**
 - ESG
- **Commercial Updates**
 - Market
 - Expansion Projects
 - Commercial Technology
- **Pipeline Control Updates**
 - Organization
 - Winter Weather Outlook
 - Operational Update & Upcoming Maintenance Activity
- **Q&A**



WE MAKE CLEAN ENERGY HAPPEN®

Safety Moment – Worker Fatigue

Worker Fatigue

Overview

- Long work hours and irregular work shifts are common in our society.
- Many American workers spend over 40 hours a week at work and almost 15 million work full time on evening, night, rotating or other irregular shifts.
- Work schedules like these may cause worker fatigue.



Hazards

- Long work hours may increase the risk of injuries and accidents and can contribute to poor health and worker fatigue.
- Studies show that long work hours can result in increased levels of stress, poor eating habits, lack of physical activity and illness.
- Several factors including too little, poor quality or interrupted sleep over a period of time can cause fatigue.

Prevention

- Provide training addressing the hazards, symptoms, and health impacts of fatigue.
- Equip employees with fatigue mitigation strategies and resources to minimize the adverse effects of fatigue.
- Diet, exercise, and getting 7-9 hours of uninterrupted sleep daily.
- Avoid caffeine prior to bedtime.
- Make sure sleep environment is comfortable, cool, dark and quiet.

<https://www.osha.gov/worker-fatigue/prevention>

Tips for Treating Fatigue



Get enough sleep



Practice relaxation activities



Stay hydrated



Eat healthy foods



Exercise regularly



Avoid known stressors



Don't overbook yourself professionally and socially

verywell

<https://www.verywellhealth.com/fatigue-symptoms-causes-diagnosis-and-treatment-4768481>



WE MAKE CLEAN ENERGY HAPPEN®

Williams is a Key Long-Term Leader in Providing Clean Energy.

COMMITTED TO A CLEAN ENERGY FUTURE

Williams recognizes the concerns regarding climate change and our strategy provides a practical and immediate path to reduce industry emissions and grow a clean energy economy

Right Here, Right Now Opportunities

Goal: 56% absolute reduction in company-wide greenhouse gas emissions by 2030¹

Leverage our natural gas-focused strategy and technology that is available today to focus on immediate opportunities to reduce emissions, scale renewables and build a clean energy economy.

Future Innovation and Technologies

Our path to net zero by 2050 involves a combination of immediate and long-term solutions, including investments in renewables, technology and the best and brightest talent who are committed to doing what is right.

Visit wmb.link/Climate-Overview to learn more

¹ 56% absolute reduction measured against 2005 emissions

CLIMATE COMMITMENT PROGRESS



56% Reduction

in company-wide greenhouse gas emissions (GHG) by 2030 vs 2005 levels of 22.6 MM mt CO₂e, on a pathway to net-zero GHG emissions by 2050

84% Reduction

averaged in pipeline blowdown GHG emissions when using recompression technology

14% Reduction

in total Loss of Primary Containment (LOPC) events year-over-year at the end of 2021, exceeding our target of 10%

50% Reduction

estimated in methane from fugitive emissions sources at 32 transmission compressor stations through the implementation of voluntary annual Leak Detection and Repair (LDAR) surveys

Creating emissions transparency

- High resolution asset monitoring and emissions detection
- Integration with upstream and downstream emissions data sources
- Real time reporting and mitigation response

Advancing operating capabilities

- Modernizing control systems and implementing artificial intelligence and machine learning to continuously improve
- Digital business transformation will lend greater insight into asset reliability and efficiency

Facilitating zero carbon solutions for us and our customers

- Driving measurable emissions improvements over time
- Enabling system optimization with goal to achieve real-time energy optimization

WILLIAMS' EMISSIONS REDUCTION ROADMAP

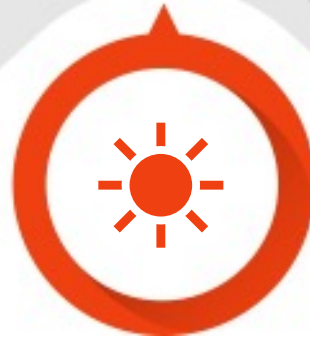
Optimizing Operations

- Voluntary leak detection and repair
- Prevent process upsets & Loss of Primary Containment (LOPC) events
- Minimize blowdowns



Solar & Energy Storage

Renewable power generation to supply existing electric compression/demand



Emerging Opportunities

- Carbon Capture
- Hydrogen
- Technological advances in combustion efficiency



Operational Design

- Emissions Reduction Program
- Pursue opportunity to cost-effectively reduce methane emitting equipment

Renewable Natural Gas

Pursue additional RNG connections and future opportunities

Net Zero Ambition

2030 GOAL



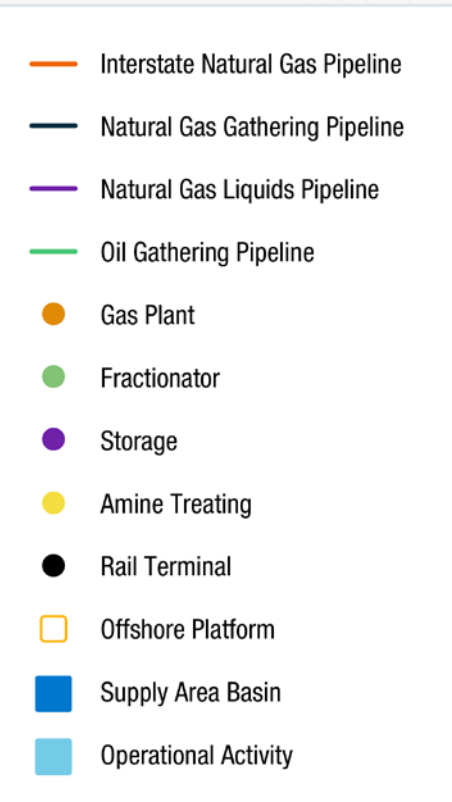
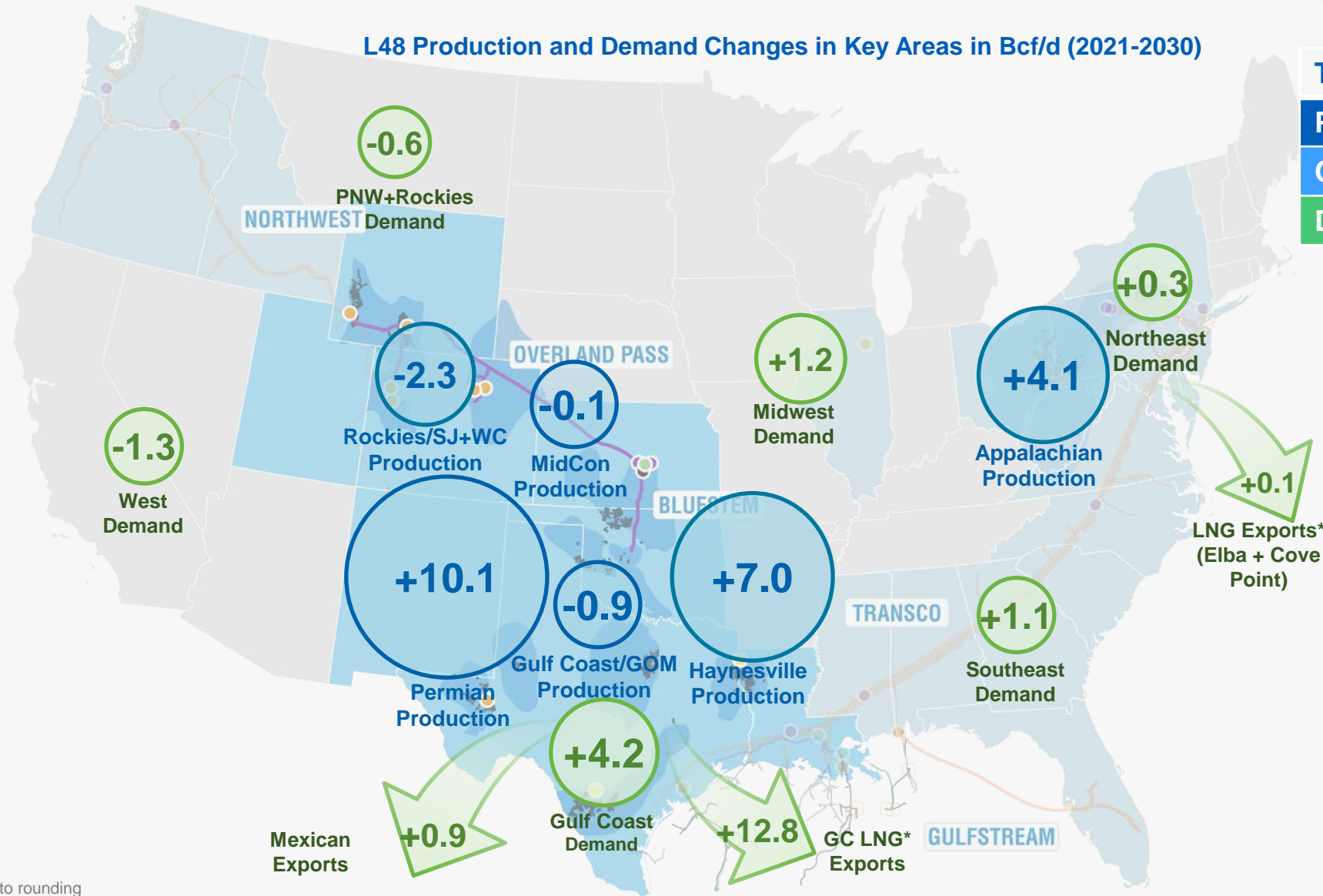
WE MAKE CLEAN ENERGY HAPPEN®

Market & Business Development Updates

CONNECTING REGIONAL NATURAL GAS DEMAND WITH BEST-IN-CLASS PRODUCTION BASINS

L48 Production and Demand Changes in Key Areas in Bcf/d (2021-2030)

Total L48	(2021-2030)
Production	+18.0 Bcf/d
Canadian Imports	+0.7 Bcf/d
Demand	+18.7 Bcf/d



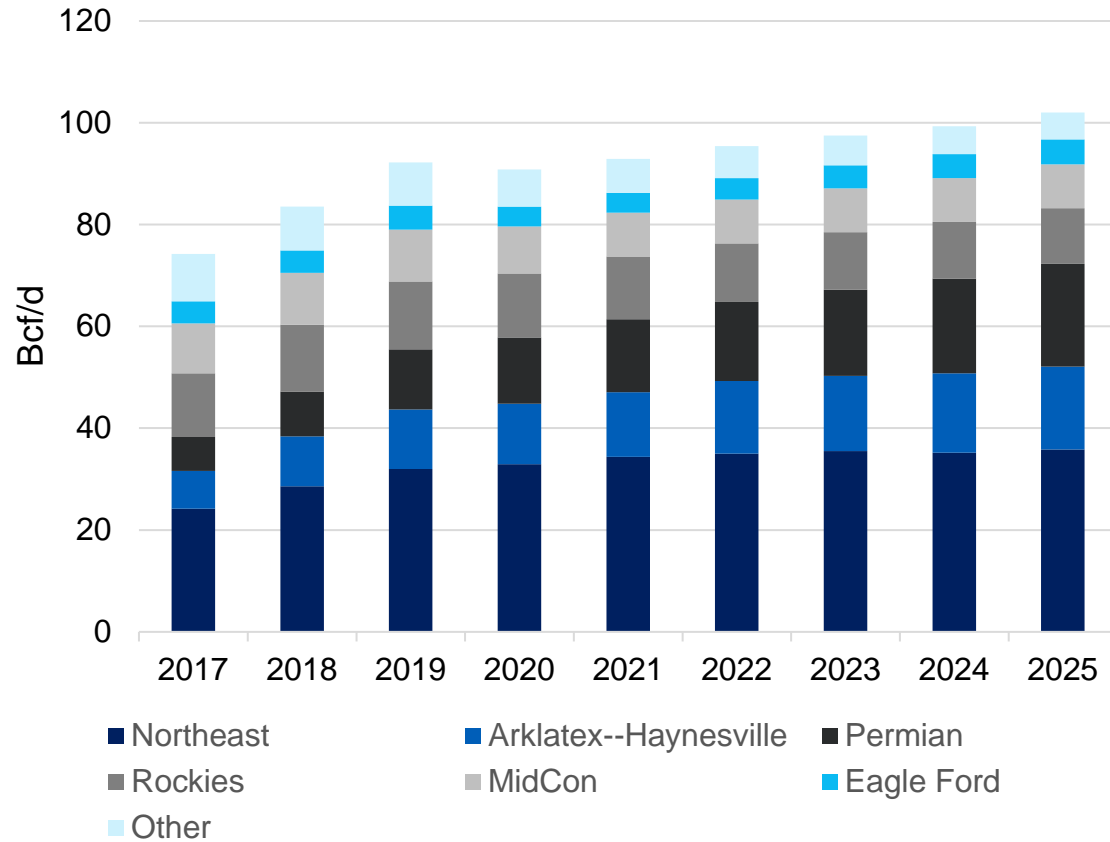
L48 Totals subject to rounding

*Expressed here as exports rather than feedgas

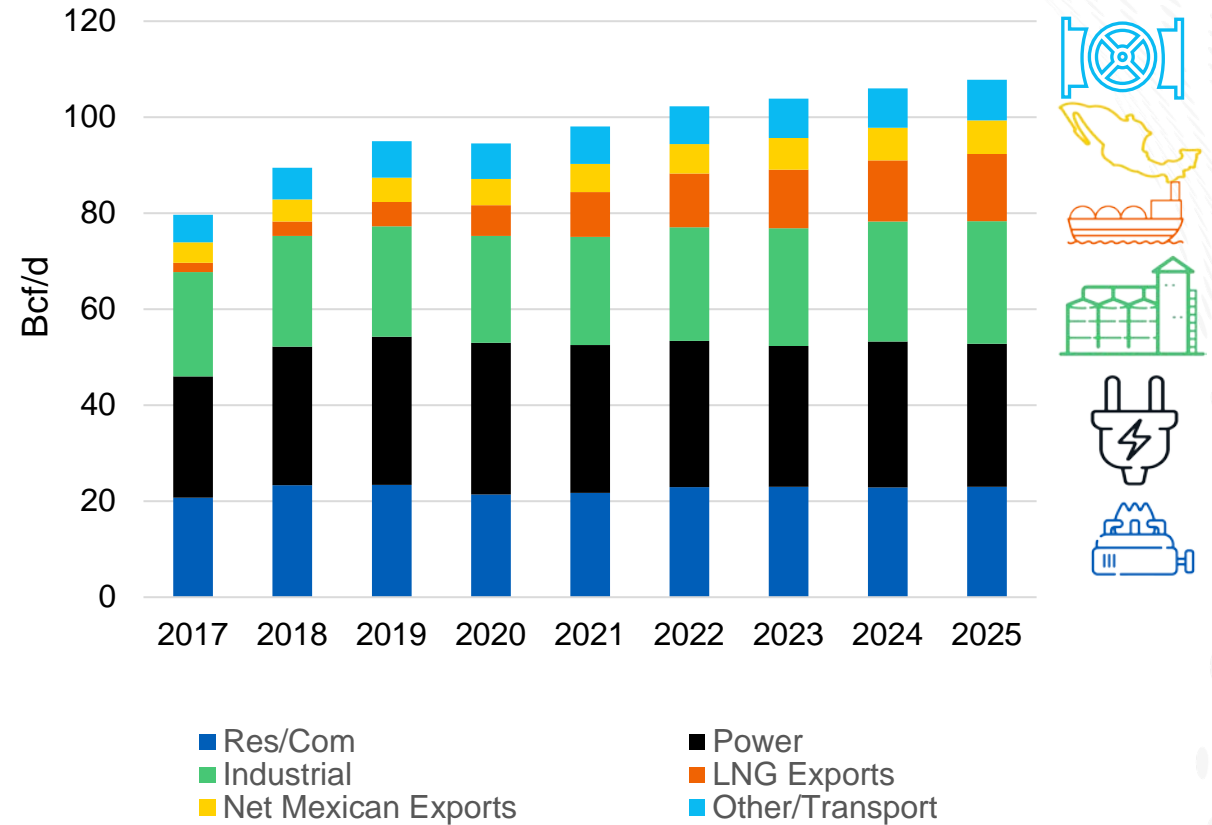
Source: Wood Mackenzie Strategic Planning Outlook 2022 Used with permission from Wood Mackenzie

L-48 SHORT-TERM NATURAL GAS PRODUCTION AND DEMAND BY SECTOR GROWTH

NATURAL GAS **PRODUCTION** BY REGION
(2017-2025)



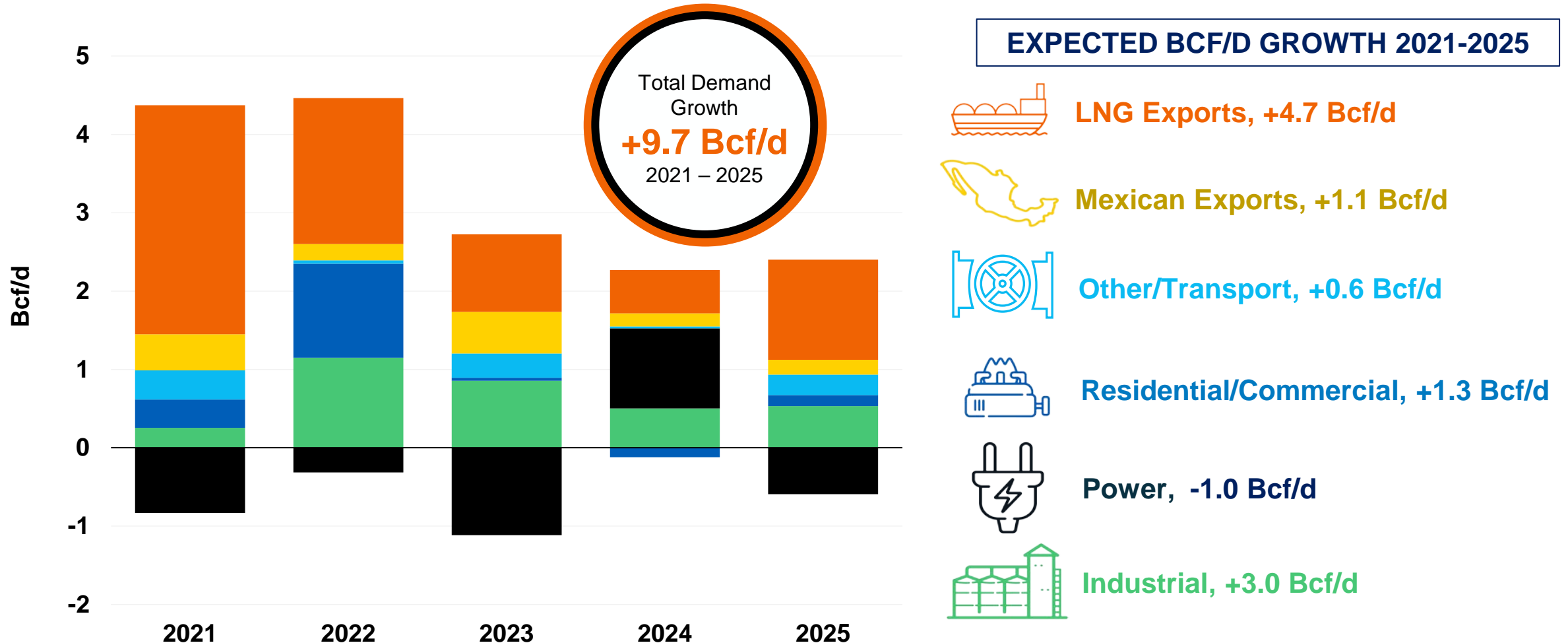
NATURAL GAS **DEMAND** BY SECTOR
(2017-2025)



Source: Wood Mackenzie Strategic Planning Outlook 2022. Used with permission from Wood Mackenzie
Note: "Other" comprised of West Coast, remaining Gulf Coast, Gulf of Mexico and Barnett

NATURAL GAS DEMAND, EXPORTS DRIVING DEMAND GROWTH, 2023 SHOWS GROWTH ACROSS ALL SECTORS EXCEPT POWER

LOWER 48 NATURAL GAS DEMAND **YEAR-OVER-YEAR (Y-O-Y) DEMAND** CHANGE BY SECTOR (2021–2025)

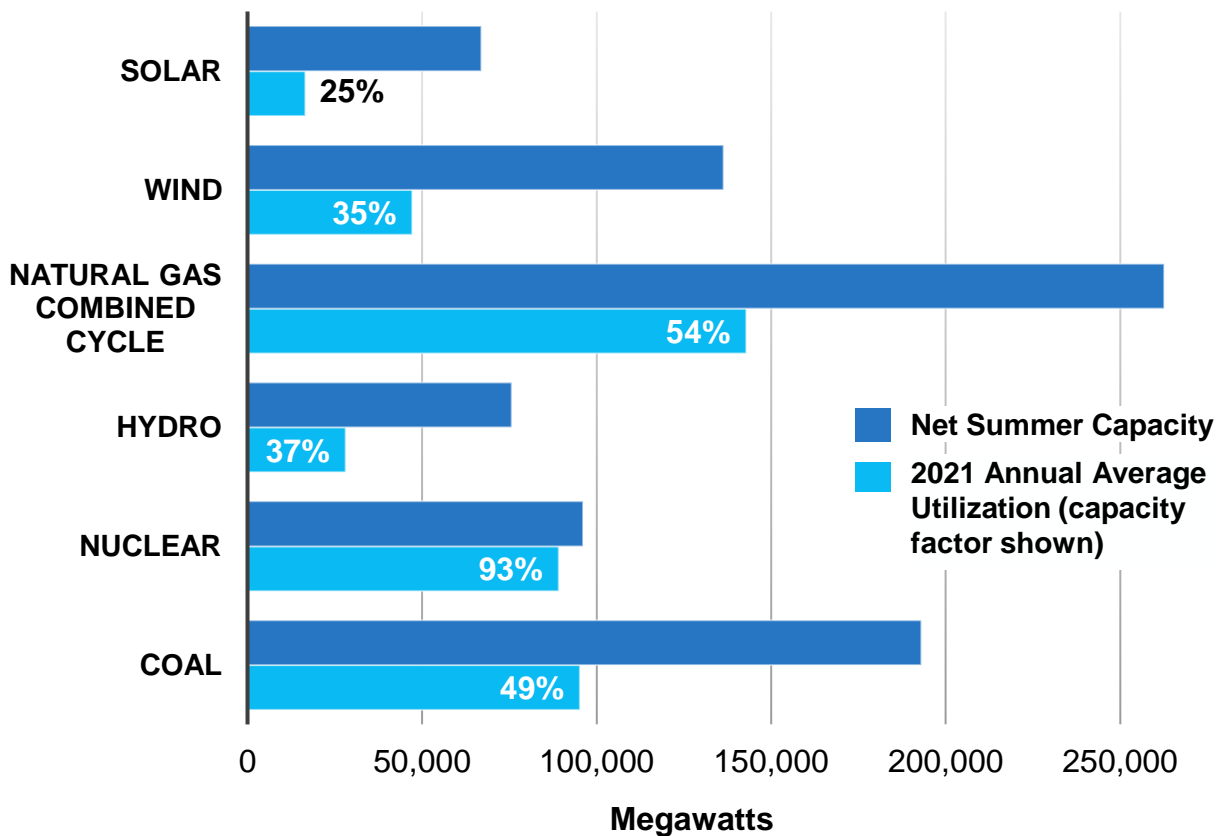


Source: Wood Mackenzie Strategic Planning Outlook 2022. Used with permission from Wood Mackenzie

Natural Gas is a Necessary Complement to Increasing Intermittent Renewables Generation and New Capacity Continues to be Added



Lower-48 Power Sector Total Installed Capacity vs Utilization



Source: U.S. Energy Information Administration, Inventory of Operating Generators as of August 2022

Effective Supply as Needed



- > Installed capacity of solar and wind resources are closing in on the amount of gas-fired combined cycle capacity, but **natural gas contributes 2.2x the annual net generation** of solar plus wind.
- > Importantly, **daily and monthly** power production from **wind and solar** plants will routinely be a **small fraction of the yearly averages** shown.

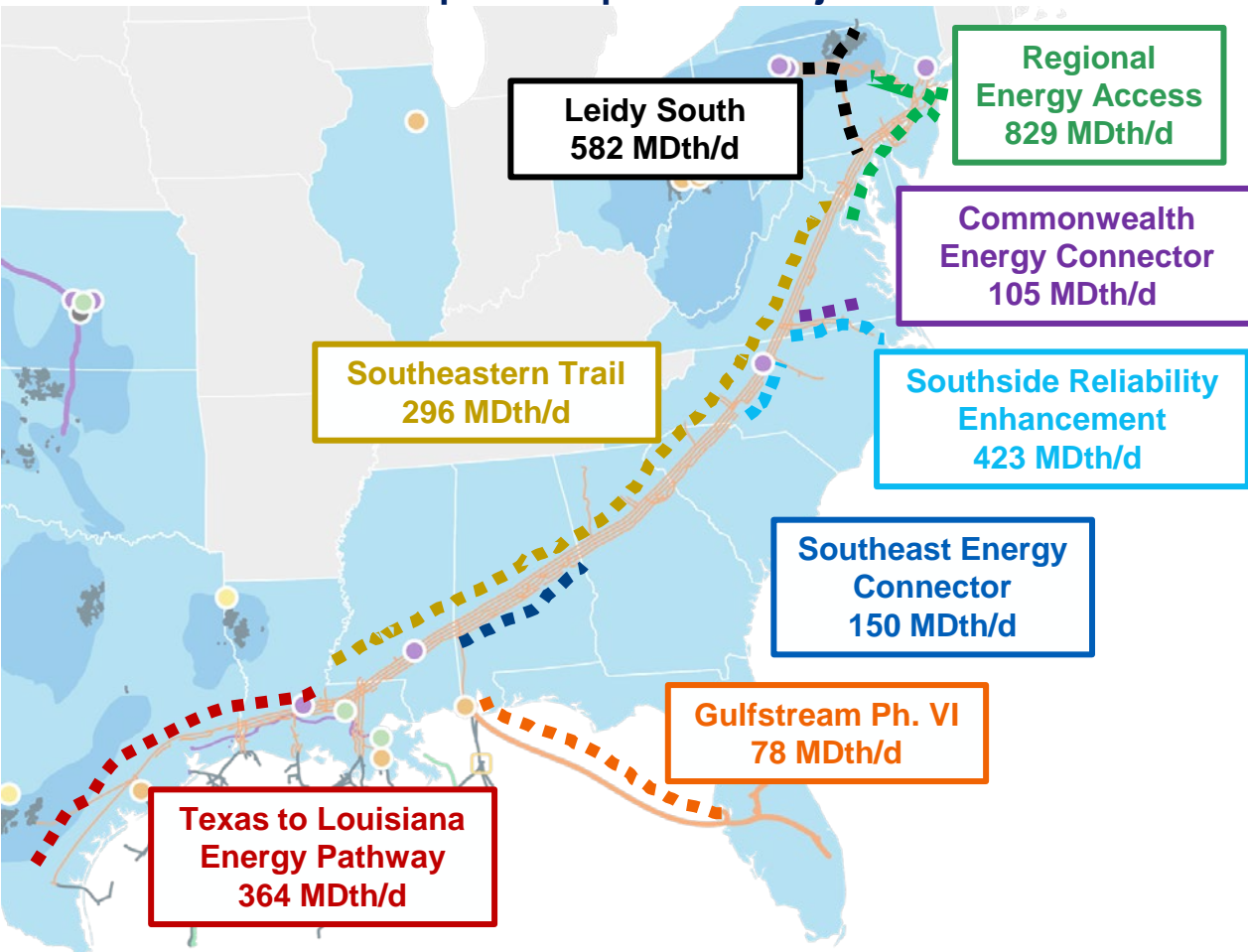
Partnering with Renewables



- > As states make strides toward **renewable power**, it is vital for **natural gas-fired** generation to follow as a backup fuel to ensure **grid reliability**.
- > **Utility scale battery backup** is still in its infancy and **will require natural gas fired generation** at times for reliable charging.
- > Natural gas **pipeline capacity** is increasingly **valuable** as more capacity will be needed to support the **intermittent nature** of renewable power.

Looking to the Future

Williams' U.S. Asset Map, Highlighting Natural Gas Transmission Pipeline Expansion Projects



Project	Target In-Service	Current Status	Project Capacity
✓ Southeastern Trail	COMPLETED	Commenced Full In-Service Jan. '21	296 MDth/d
✓ Leidy South	COMPLETED	Commenced Full In-Service Dec. '21	582 MDth/d
✓ Gulfstream Ph. VI	COMPLETED	Commenced Full In-Service July '22	78 MDth/d
Regional Energy Access	4Q '24	Received Final EIS July '22	829.4 MDth/d
Southside Reliability Enhancement	4Q '24	Filed FERC Application May '22	423.4 MDth/d
Commonwealth Energy Connector	4Q '25	Filed FERC Application Aug. '22	105 MDth/d
Southeast Energy Connector	3Q '25	Filed FERC Application Aug. '22	150 MDth/d
Texas to Louisiana Energy Pathway	4Q '25	Filed FERC Application Aug. '22	364.4 MDth/d

Shipper Commitments

FERC Certificate
Application Filed

FERC
EIS / EA

FERC
Certificate

Major Construction
Activities

In-service

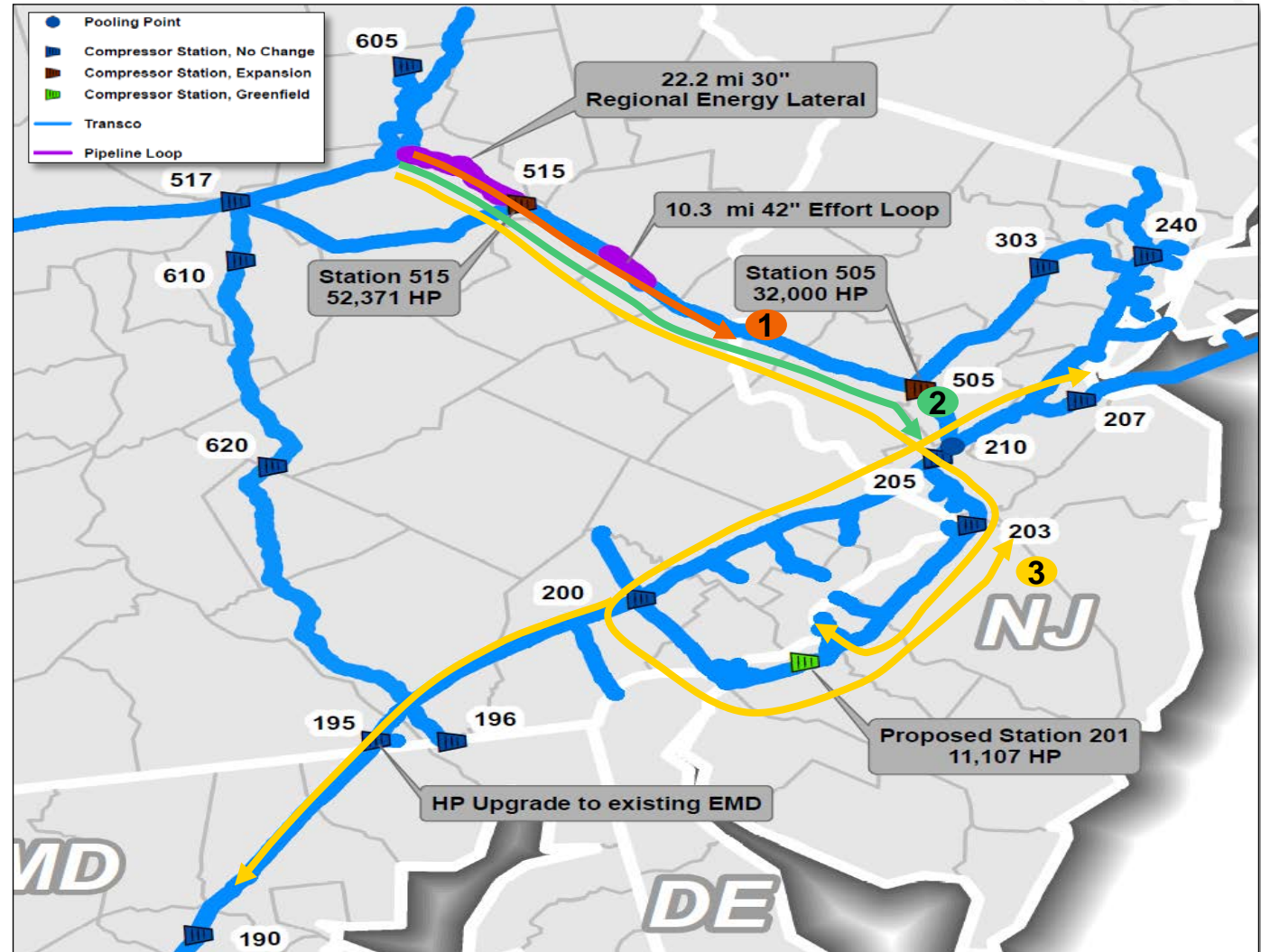
REGULATORY MILESTONES FOR FULLY CONTRACTED REGULATED EXPANSIONS

Regional Energy Access

Leidy Supply for Increased End User Demand in the Northeast

Project Facts:

- Paths:
 - Path 1: Chapin B to multiple delivery points along Leidy.
 - Path 2: Chapin B to the Station 210 Zone 6 pool.
 - Path 3: Chapin B to Zone 6 mainline and the Marcus Hook and Trenton Woodbury Laterals.
- Capacity: 829.4 MDth/d
- Received FEIS July 2022
- Proposed ISD: 4Q 2024

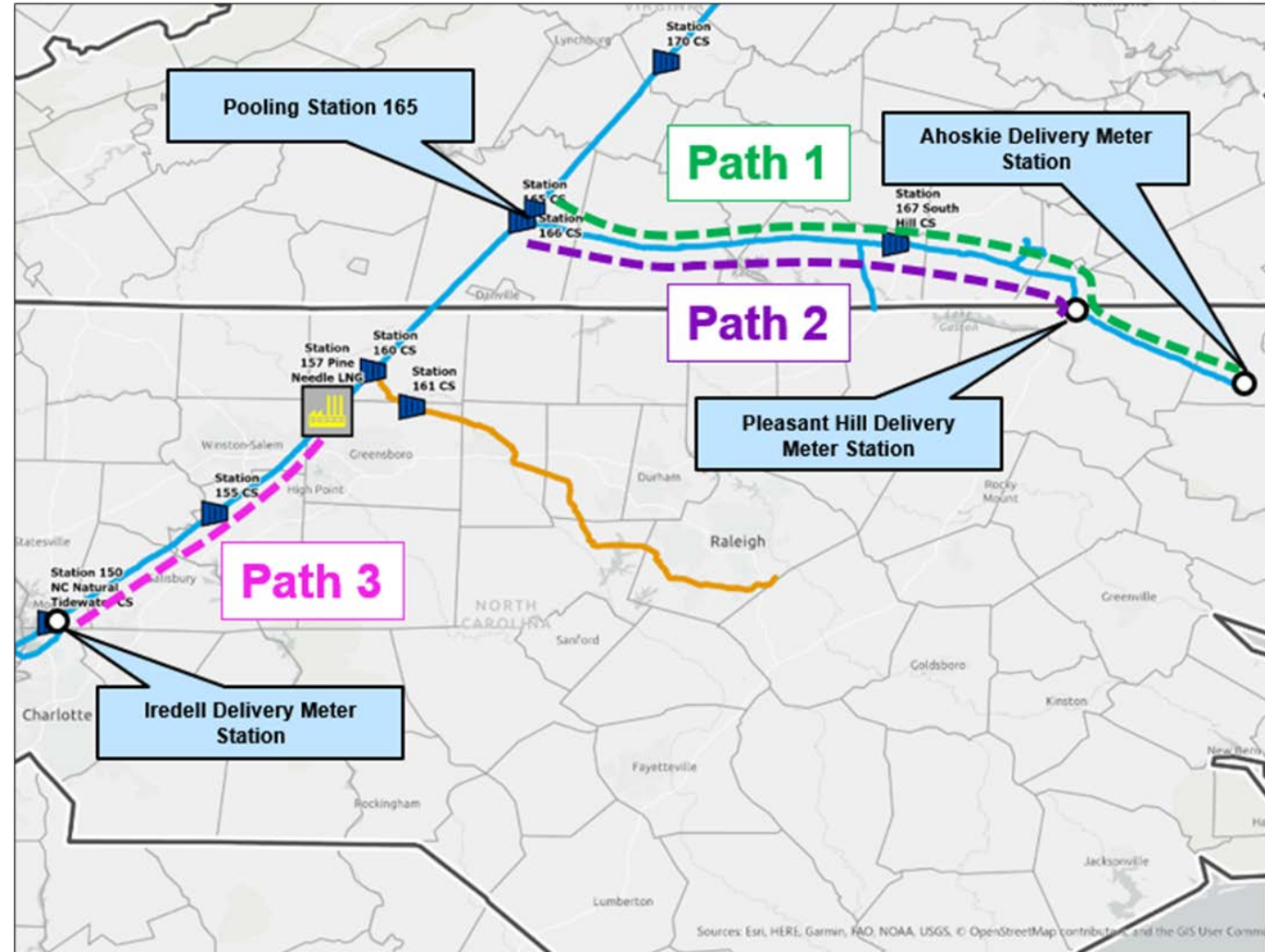


Southside Reliability Enhancement

North Carolina Resiliency and Growth

Project Facts:

- Paths:
 - Path 1 – Transco's Station 165 Pool and proposed interconnect with Mountain Valley Pipeline to the Ahoskie Delivery.
 - Path 2 – Transco's Station 165 Pool and proposed interconnect with Mountain Valley Pipeline to the Pleasant Hill Delivery.
 - Path 3 – Transco's Pine Needle Interconnect to the Iredell Delivery.
- Capacity: 423.4 MDth/d
- Filed May 2022
- Proposed ISD: 4Q 2024

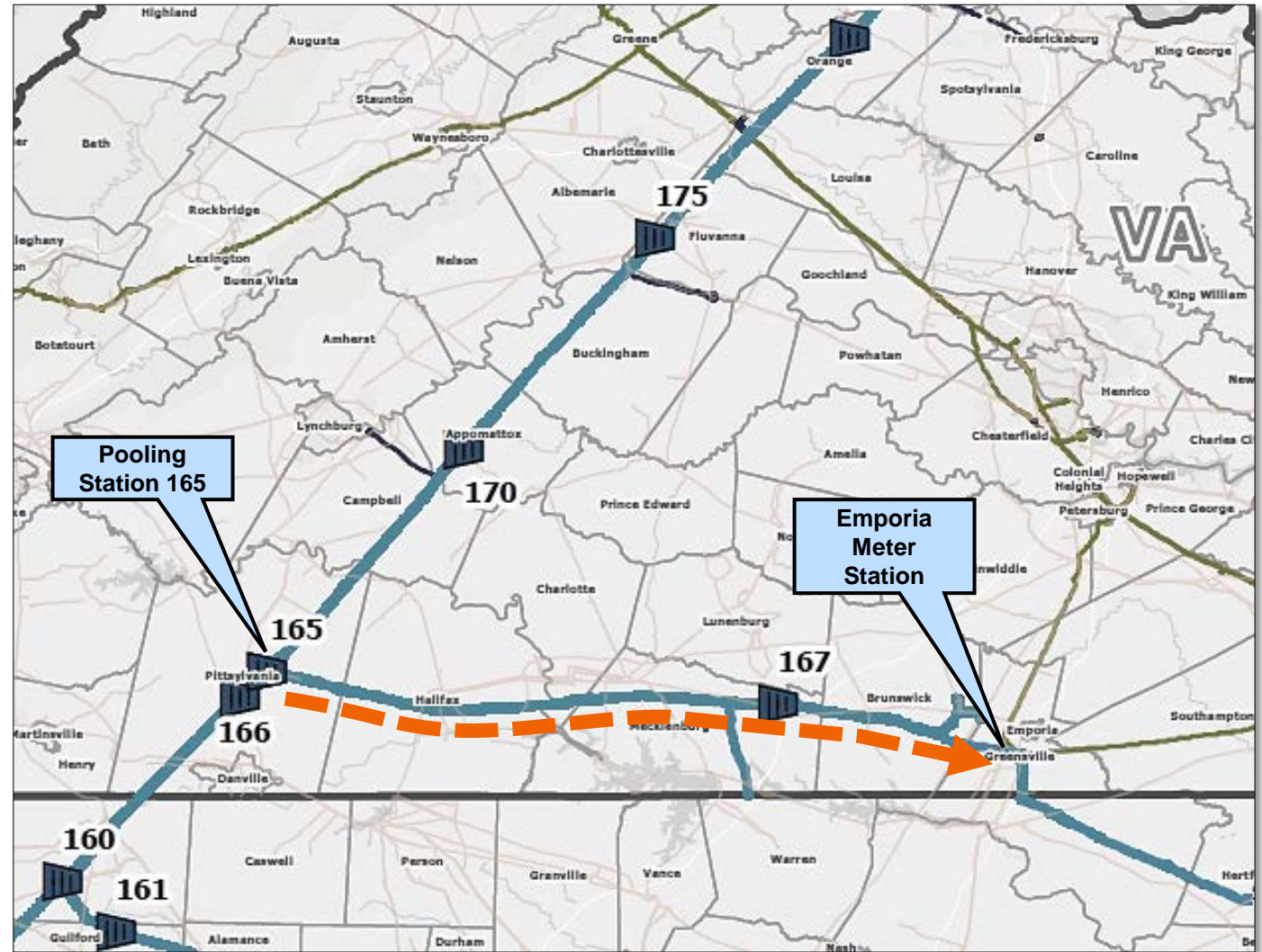


Commonwealth Energy Connector

South Virginia Lateral Expansion to Interstate Connectivity

Project Facts:

- Path:
 - From Transco's Pooling Station 165 to Transco's existing interconnect with Columbia Gas Transmission at the Emporia delivery meter station.
- Capacity: 105 MDth/d
- Filed August 2022
- Proposed ISD: 4Q 2025



Southeast Energy Connector

Meeting Clean Energy Demand in the Southeast

Project Facts:

- Path:
 - Path 1 – Transco's Petal Storage interconnect to the Gaston Meter Station
 - Path 2 – Transco's Station 85 Pool to the Gaston Meter Station
- Capacity: 150 MDth/d
- Filed August 2022
- Proposed ISD: 3Q 2025

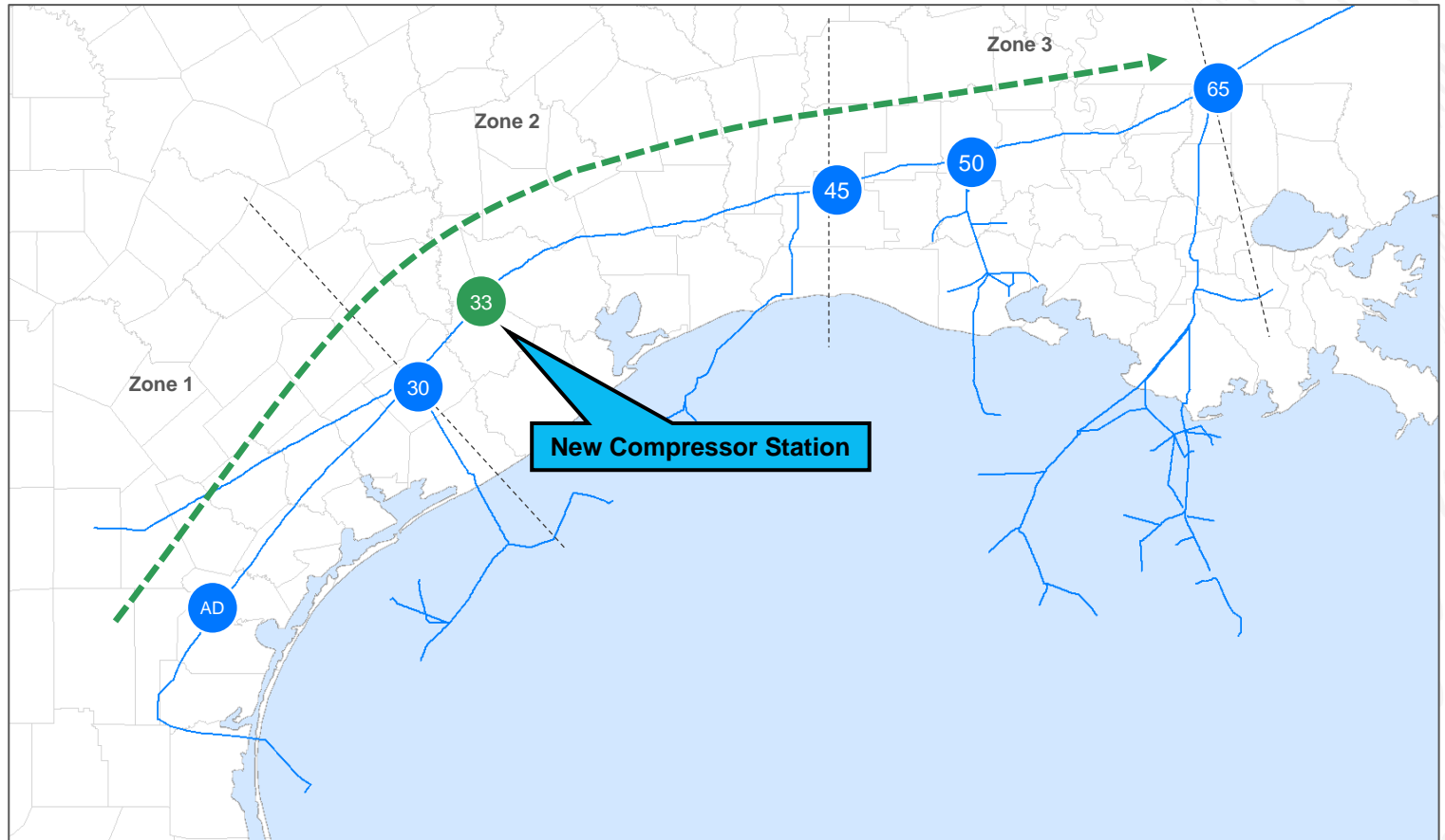


Texas to Louisiana Energy Pathway

Meeting Clean Energy Demand in the Gulf Coast

Project Facts:

- Path:
 - From the Agua Dulce area to Transco's existing Station 65 pool.
- Capacity:
 - 364.4 MDth/d
- Open season:
 - Closed April 25, 2022
- Proposed ISD:
 - Full Project: 4Q 2025

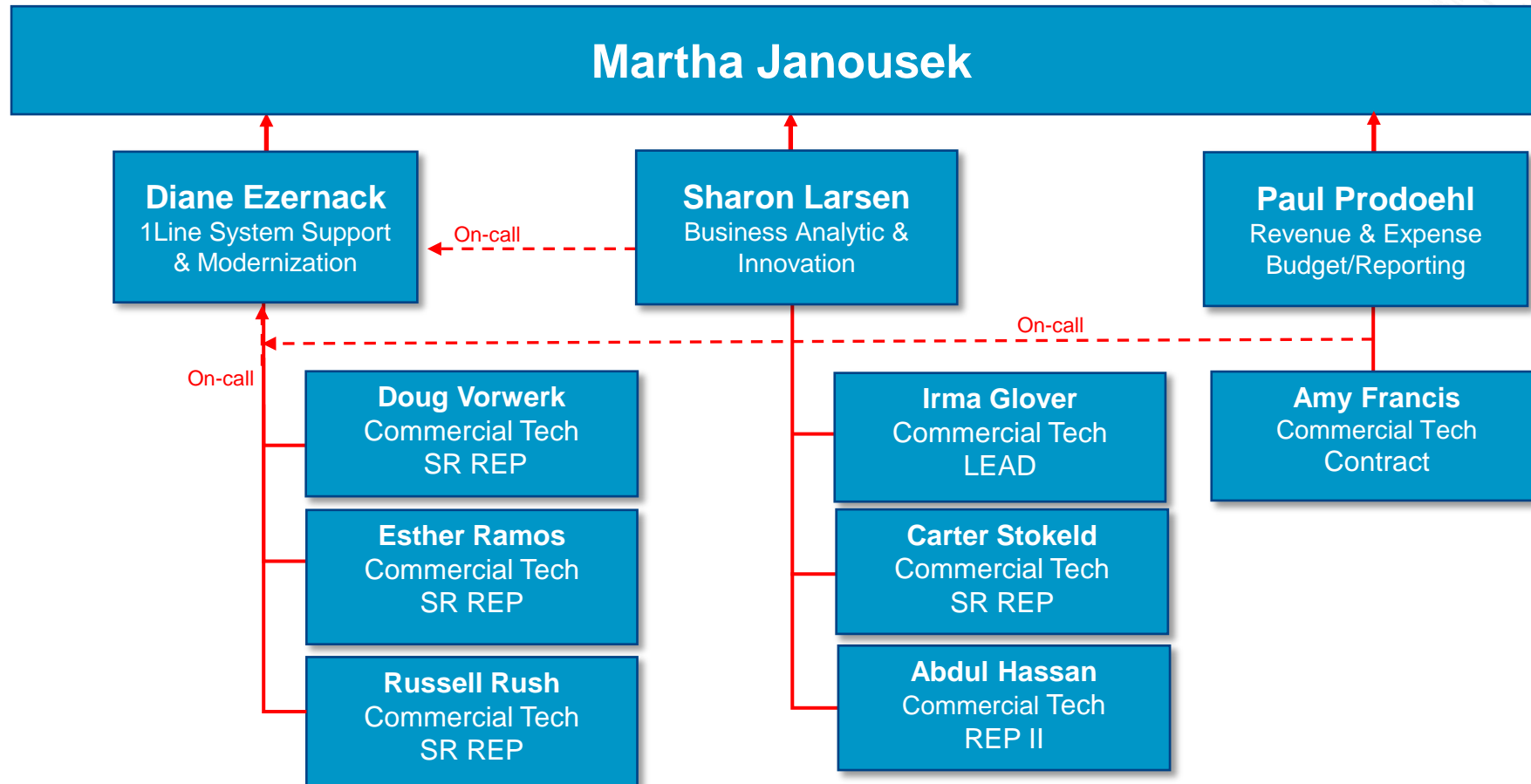




WE MAKE CLEAN ENERGY HAPPEN®

Commercial Technology Updates

Commercial Technology Organization



Commercial Technology Summary

Recent Changes to 1Line:

- Password Reset
- NAESB 3.2
- EPSQ Auto Approval
- Pool Balance Summary Page Display Improvements
- Gas measurement consolidation and integration to 1Line
- Upgraded EDI system

Future Enhancements:

- Hourly and Daily Lab Analysis Reports
- Hourly Measurement Parent Summary
- 1Line Modernization
- New Customer interactive Portal
- 1Line Customer Forum Survey

* Docket Nos. RP20-614 and RP20-618 Stipulation and Agreement, approved in 176 FERC ¶ 61,066 (2021)

Recent Changes to 1Line

- Password Reset
 - Self-serving option to reset password without needing to go through Commercial Representative.
 - Secure method provides temporary passcode to user's valid email or cell phone assigned to user's ID.
- NAESB 3.2
 - Compliance with FERC Order No. 587-Z
 - Microsoft Edge and Google Chrome browsers are the preferred browsers compatible with 1Line.
 - Mozilla Firefox and Apple Safari are no longer supported by 1Line.
- EPSQ Auto Approval
 - Operators can set third party parties that require EPSQ approval to automatically approve.
- Pool Balance Summary Page Display Improvements
 - Improved filters and enhanced download capability.
- Gas measurement consolidation and integration to 1Line
 - Created a long-term modernization stability.
 - New internal alerts were created to proactively monitor measurement data to 1Line.
- Oracle and EDI system
 - Continue to ensure system upgrades and using the latest technologies.

Future Enhancements

Hourly and Daily Lab Analysis Reporting

Lab Analysis report currently only provides a monthly report. Changes are being made to align reporting with availabilities on the Lab Analysis page including hourly and daily options.

Hourly Measurement Parent Summary

For aggregate locations with multiple meters, an hourly measurement summary like the daily parent summary currently available in 1Line.

1Line Customer Forum Survey

Feedback to better understand customer needs and potential enhancements to 1Line

New Customer interactive Portal

Integrated analytic tools in 1line

Commercial Modernization Efforts

- 1Line is undergoing a three-year modernization effort to continue to provide a secured, reliable system for all the Transco pipeline customers. These efforts include:
- Relocating the 1Line application to the Azure cloud providing benefits and uses of more modern technologies.
- Evolving architecture to enable future business needs.
- Improve overall customer experience.

Commercial Services Path to Digital Transformation

Customer Impact



Developed Internal Power BI reports

Reps can analyze and know the customer better

- Scheduled
- Measurement
- Allocated
- Imbalances
- Invoiced

Efficiency



Data Modernization

Better able to respond to Customer Data requests

New development of Commercial Dashboards

Operations

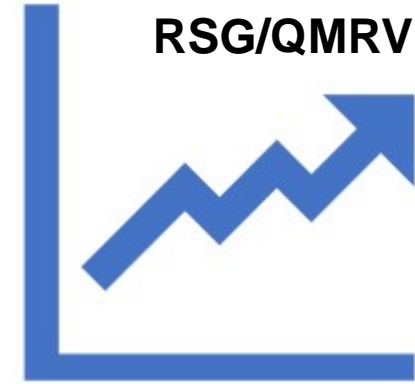


Analytic type reports

To assist Operations run the pipe more efficiently

- Load Forecaster
- Interconnect Report
- Storage Analytics
- Park and Loan Analytics

RSG/QMRV



Evaluating Commercial Impacts

Partnering with Context Labs to provide emissions information

Future Analytic Tools

With the modernization efforts, Transco is looking at providing more interactive tools for our customers. The types of tools include:

- Interactive Help Tools
 - Frequently Asked Questions (FAQ) reference area
- Customer Interactive Portal (Preliminary Design)
 - Provide dashboards for data analysis
 - Evaluating platforms to ensure security, accessibility, and ease of use
- Enhanced Mapping
 - Updating version to include integration layers
 - Contract Rights
 - Contract Utilization

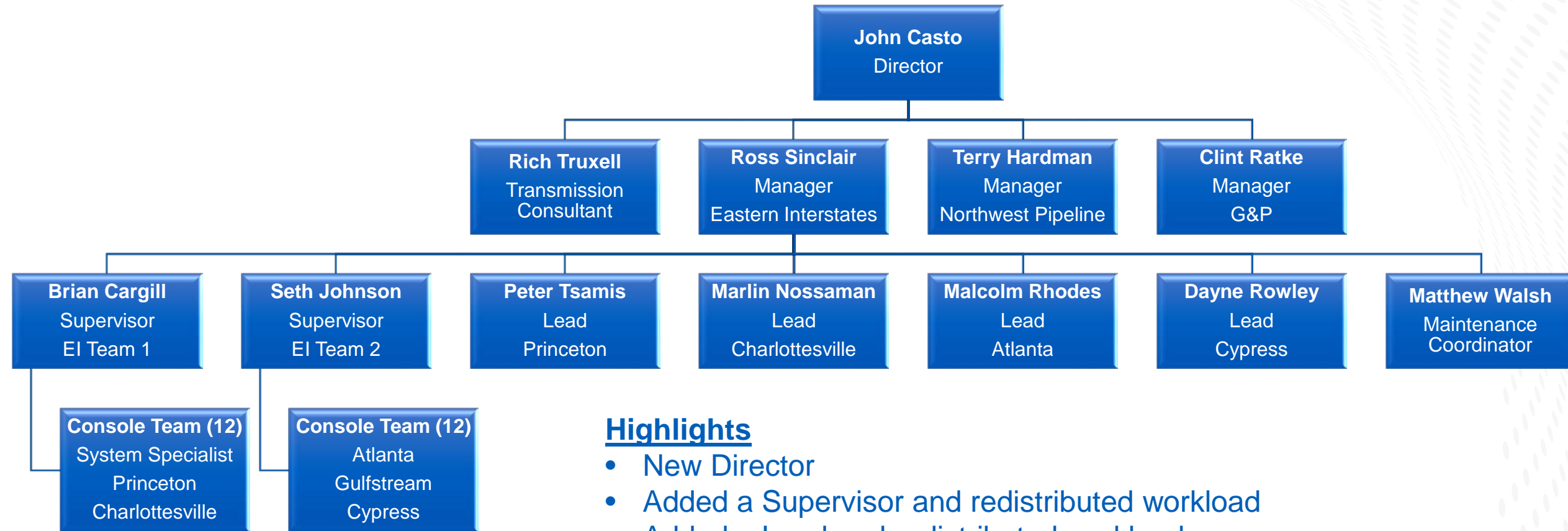




WE MAKE CLEAN ENERGY HAPPEN®

Pipeline Control Updates

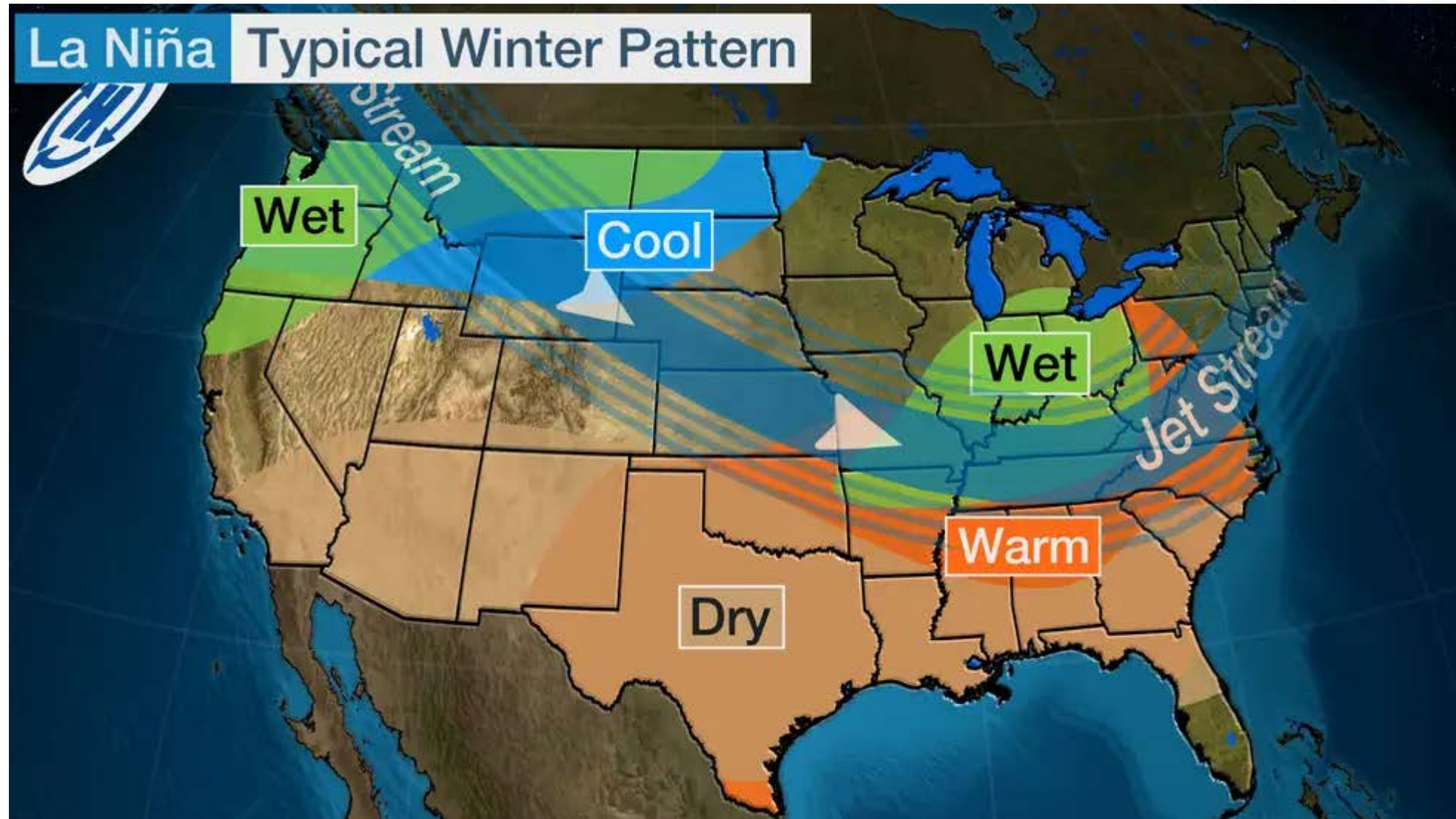
Pipeline Control Organization



Highlights

- New Director
- Added a Supervisor and redistributed workload
- Added a Lead and redistributed workload
- Added additional controllers to staff additional console

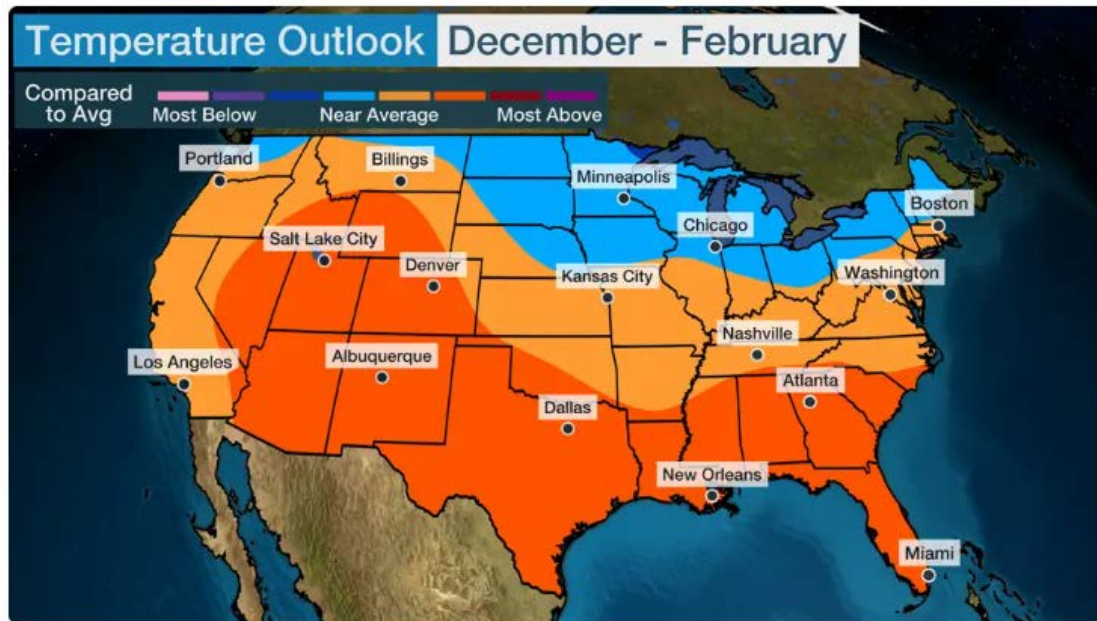
Winter Weather Outlook



Winter Weather Outlook

Summary:

- The National Weather Service forecasts a 40%-50% chance of winter temperatures being above normal in all our Market Areas.
- The Weather Channel forecasts near average temperatures in the Mid- Atlantic and Northeast. The Gulf Coast and Southeast are forecasted slightly above.

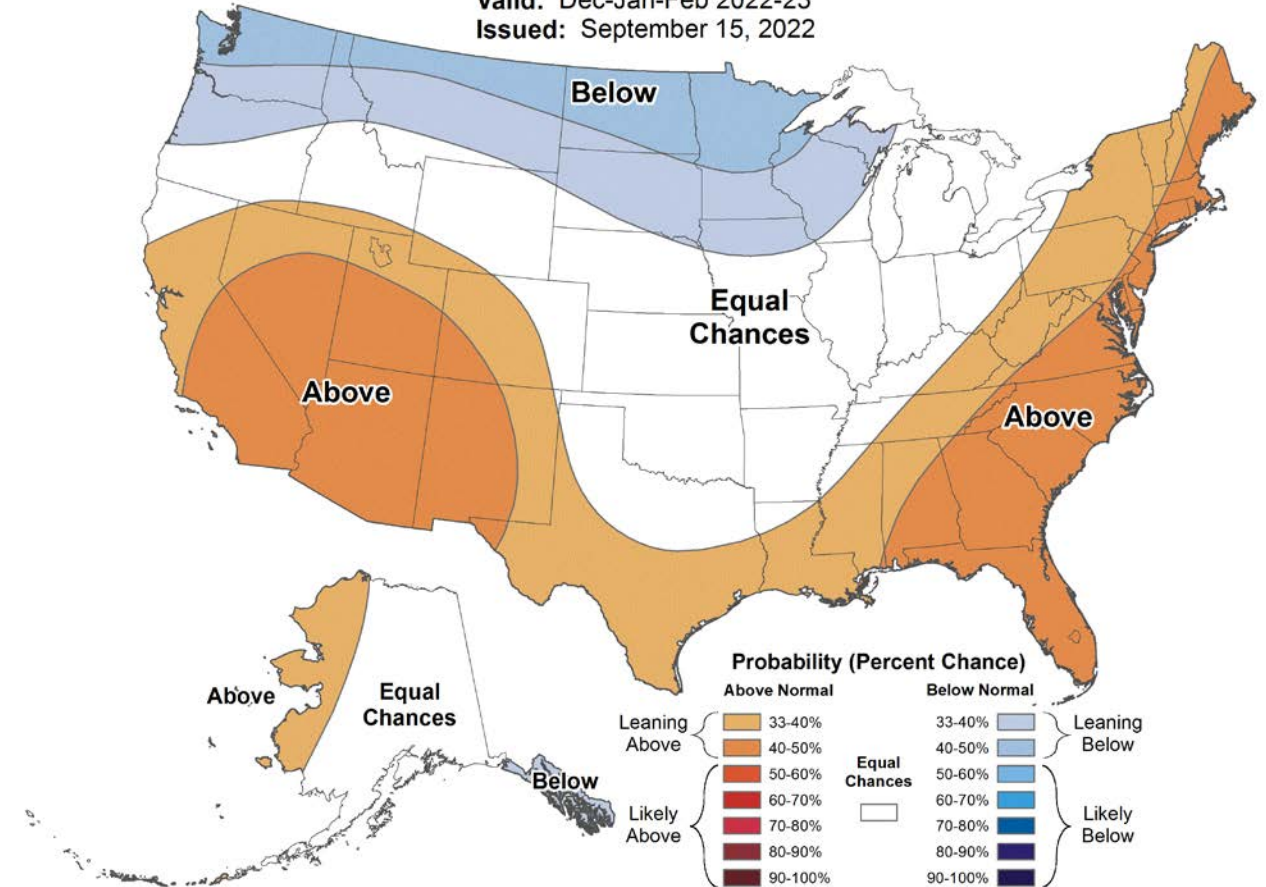


Seasonal Temperature Outlook



Valid: Dec-Jan-Feb 2022-23

Issued: September 15, 2022



Winter Weather Outlook

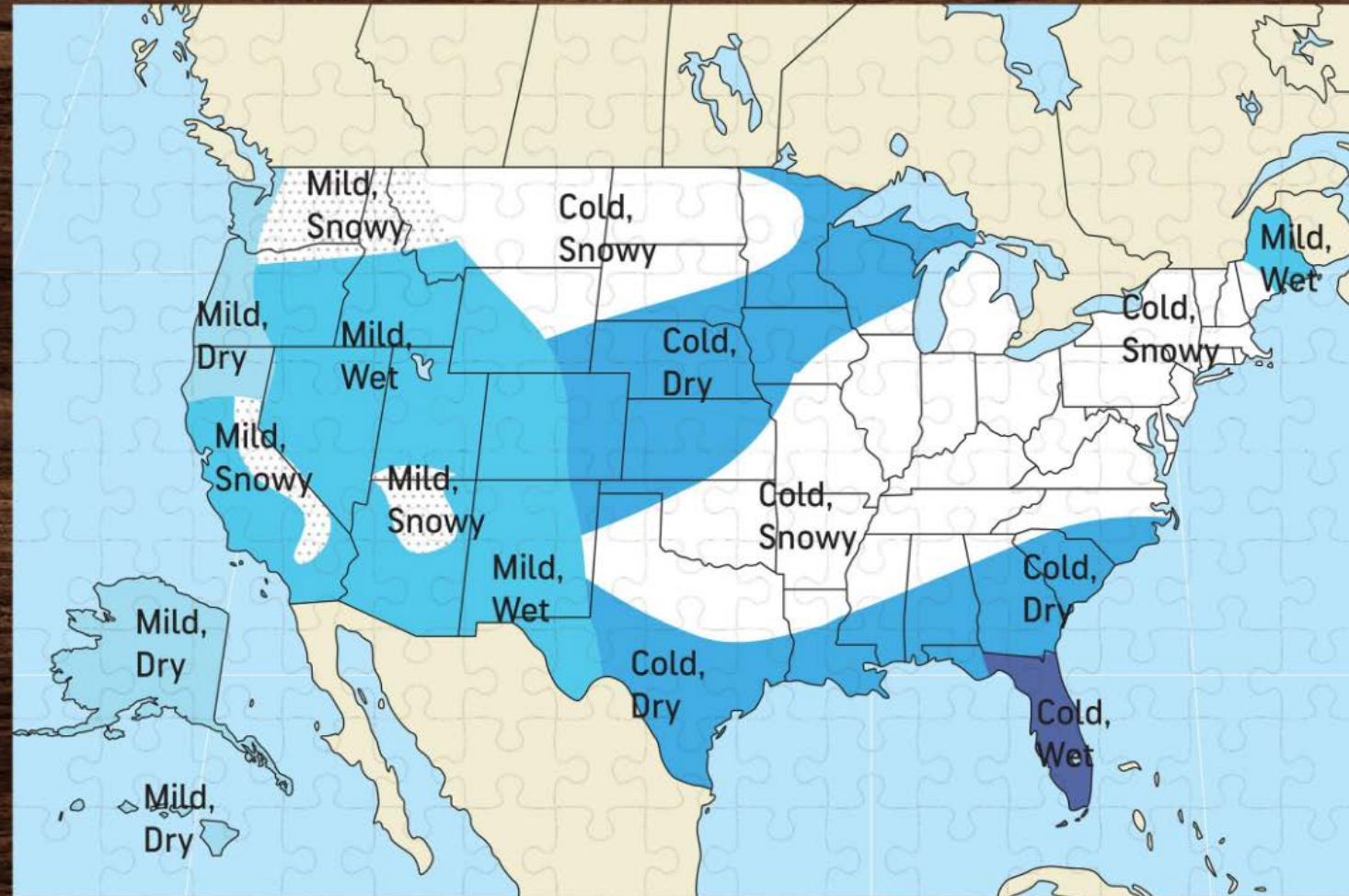


SNOWFALL PREDICTIONS				
WINTER 2022-2023				
Location	Average Snowfall	Snowfall 2021-2022	Prediction 2022-2023	# of days accumulating snow
▶ New York, NY	29.8	17.9	18-23	6-9
▶ Philadelphia, PA	23.1	12.9	14-20	5-7
▶ Boston, MA	49.2	54	40-50	16-20
▶ Washington, DC	13.7	13.2	6-10	3-5
▶ Pittsburgh, PA	44.1	43.4	40-45	34-38
▶ Chicago, IL	38.4	32.8	35-40	25-28

AccuWeather

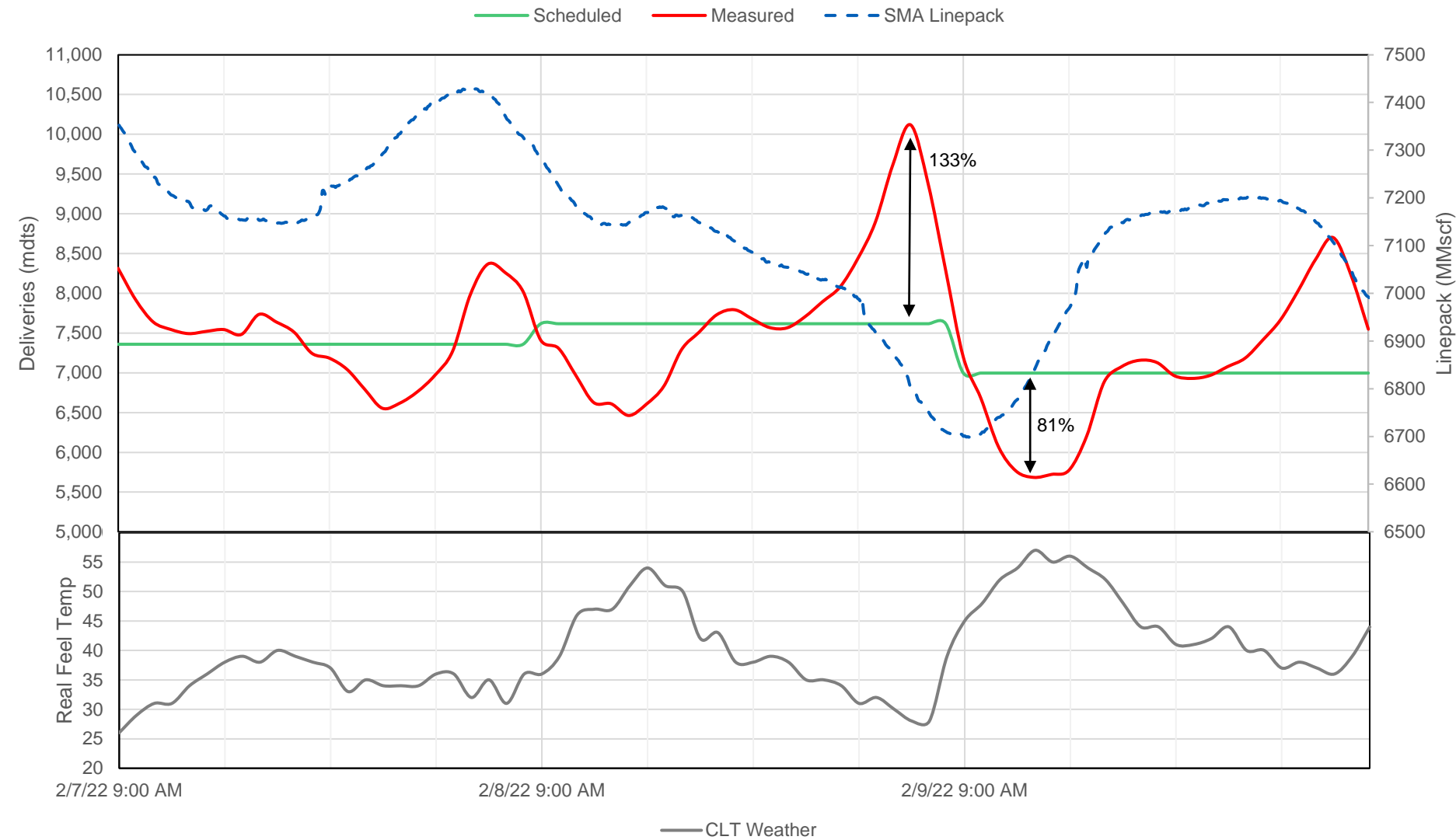
Winter Weather Outlook

2022-2023 WINTER FORECAST REVEAL!

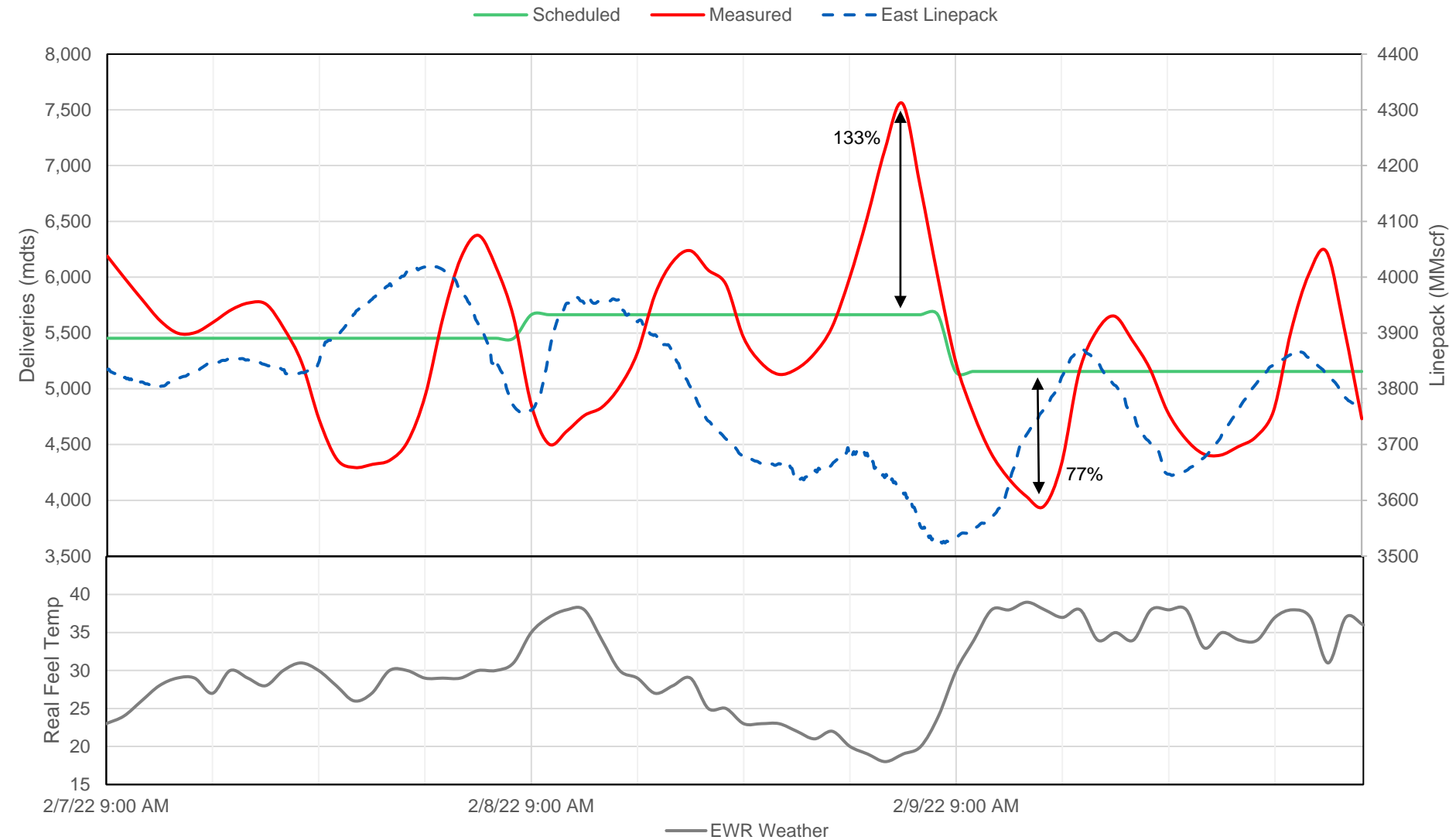


THE OLD
FARMER'S ALMANAC

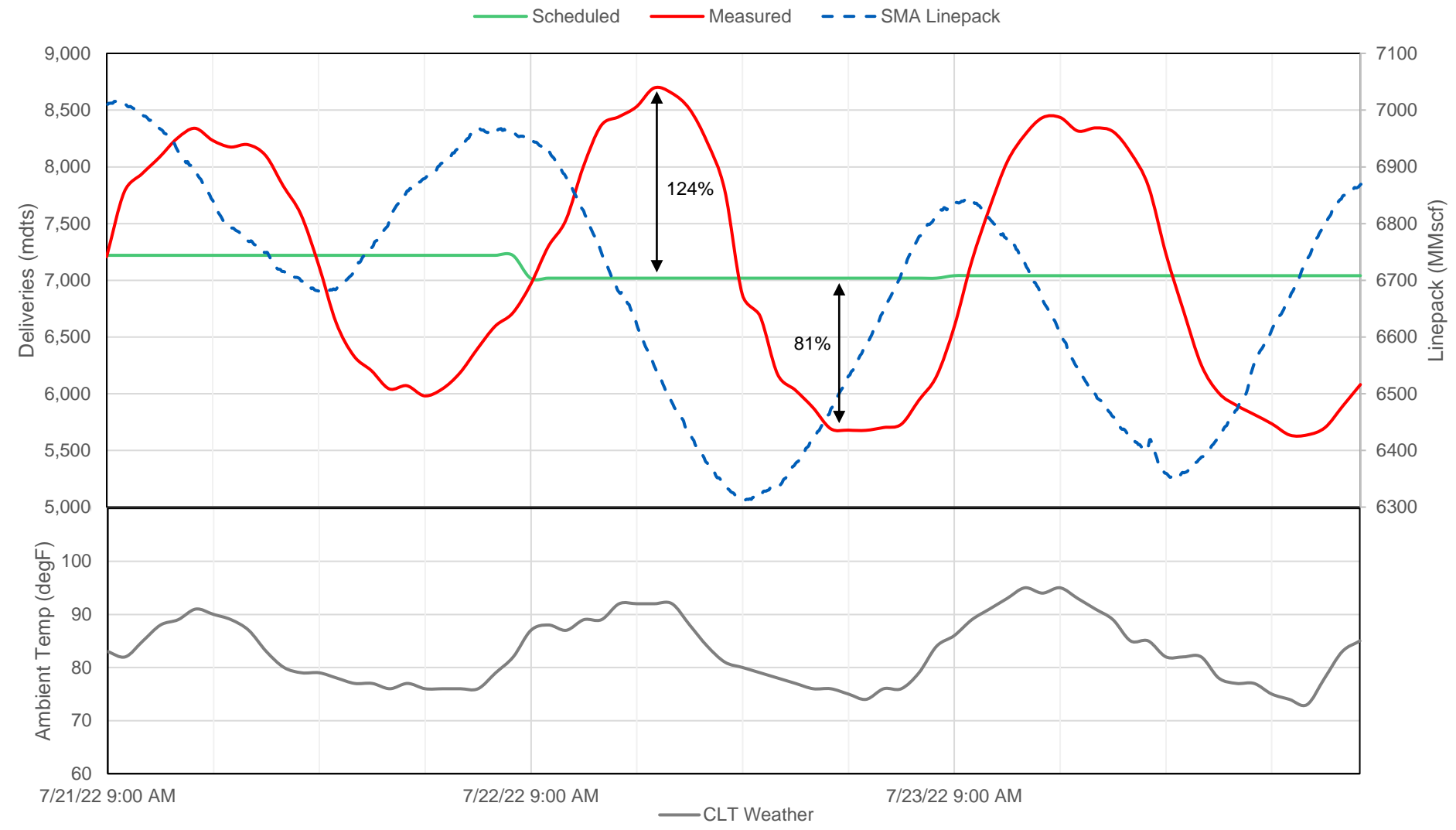
Southern Market Area Deliveries



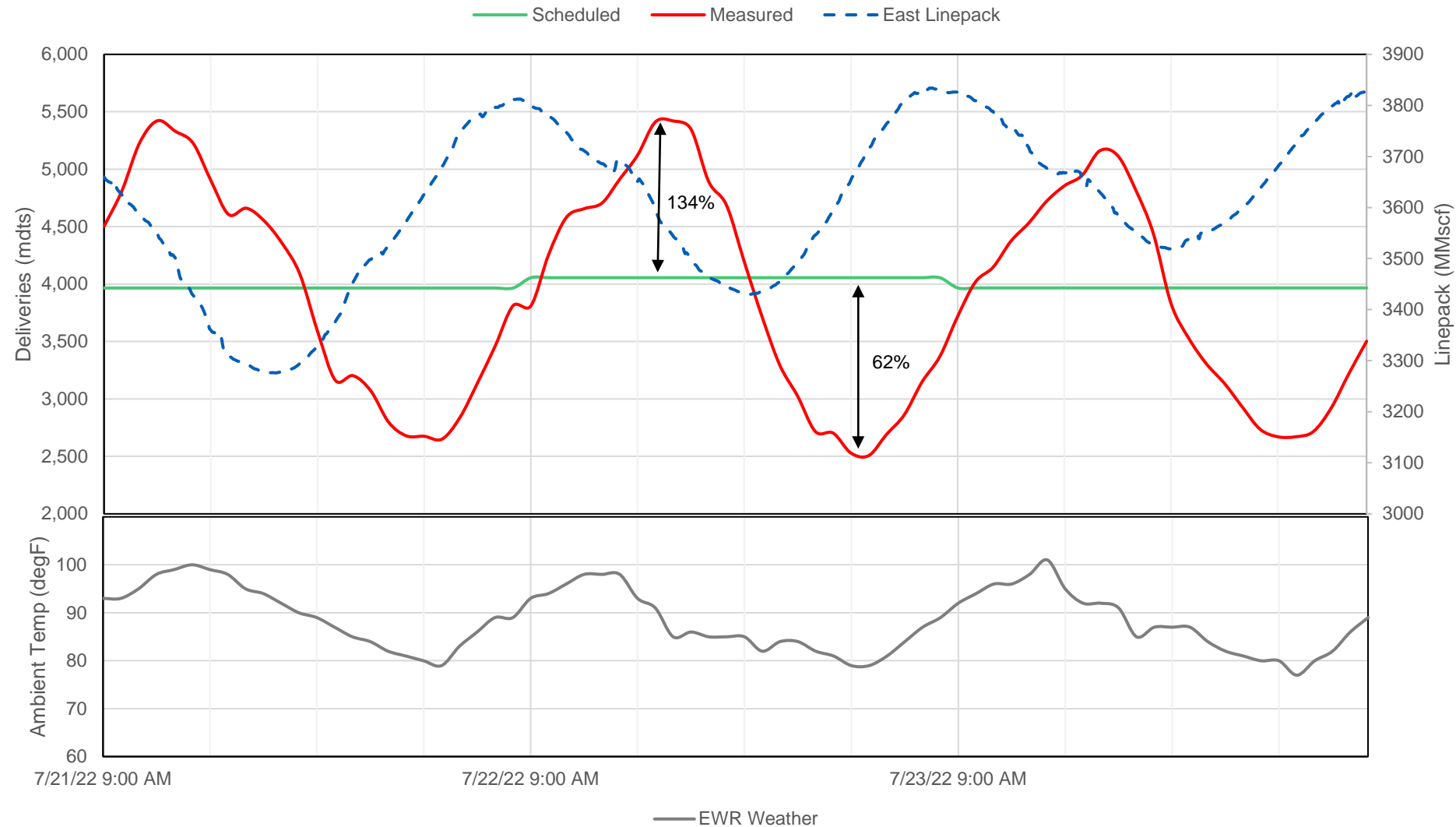
Northern Market Area Deliveries



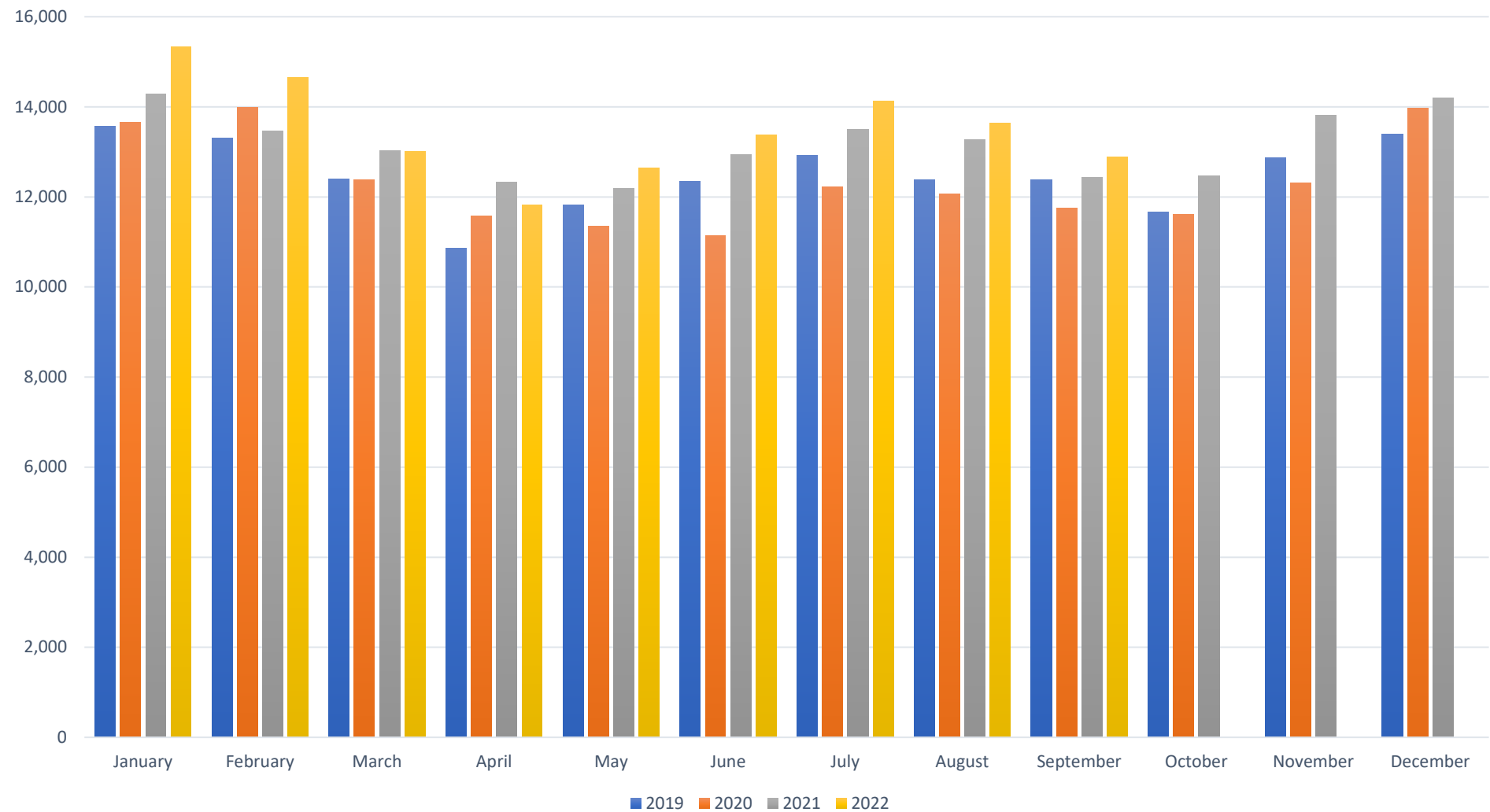
Southern Market Area Deliveries



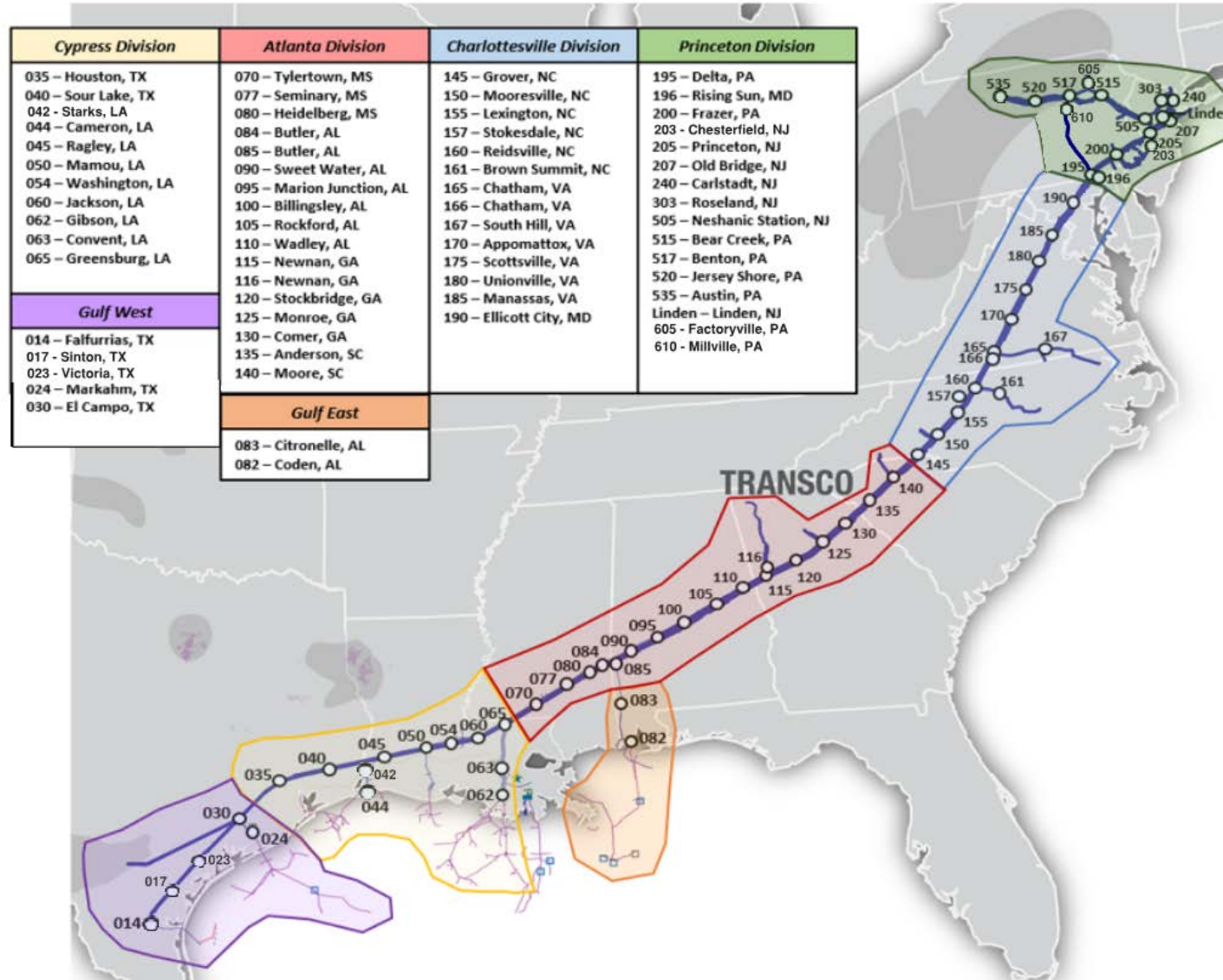
Northern Market Area Deliveries



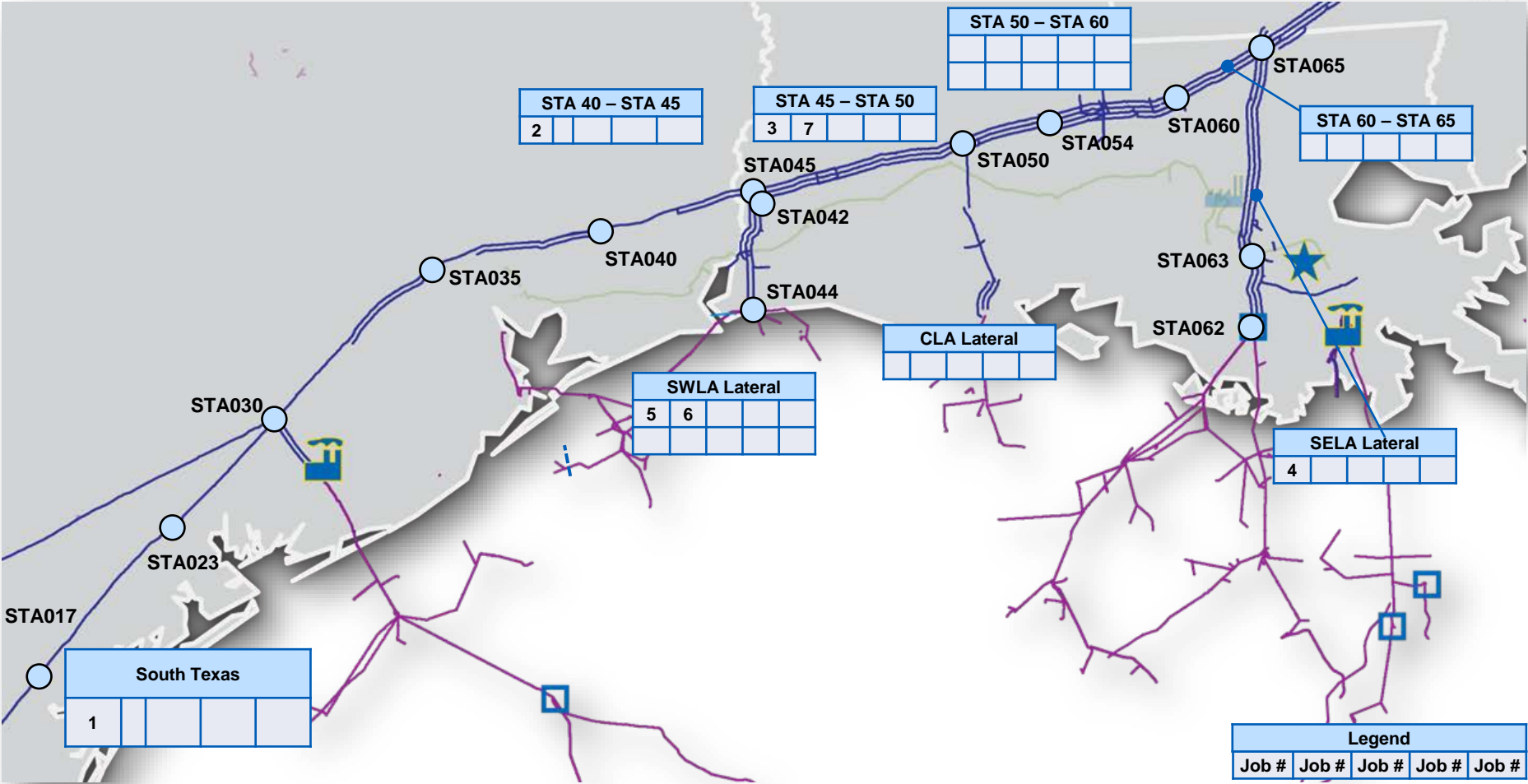
Daily Average Deliveries



Transco System Overview



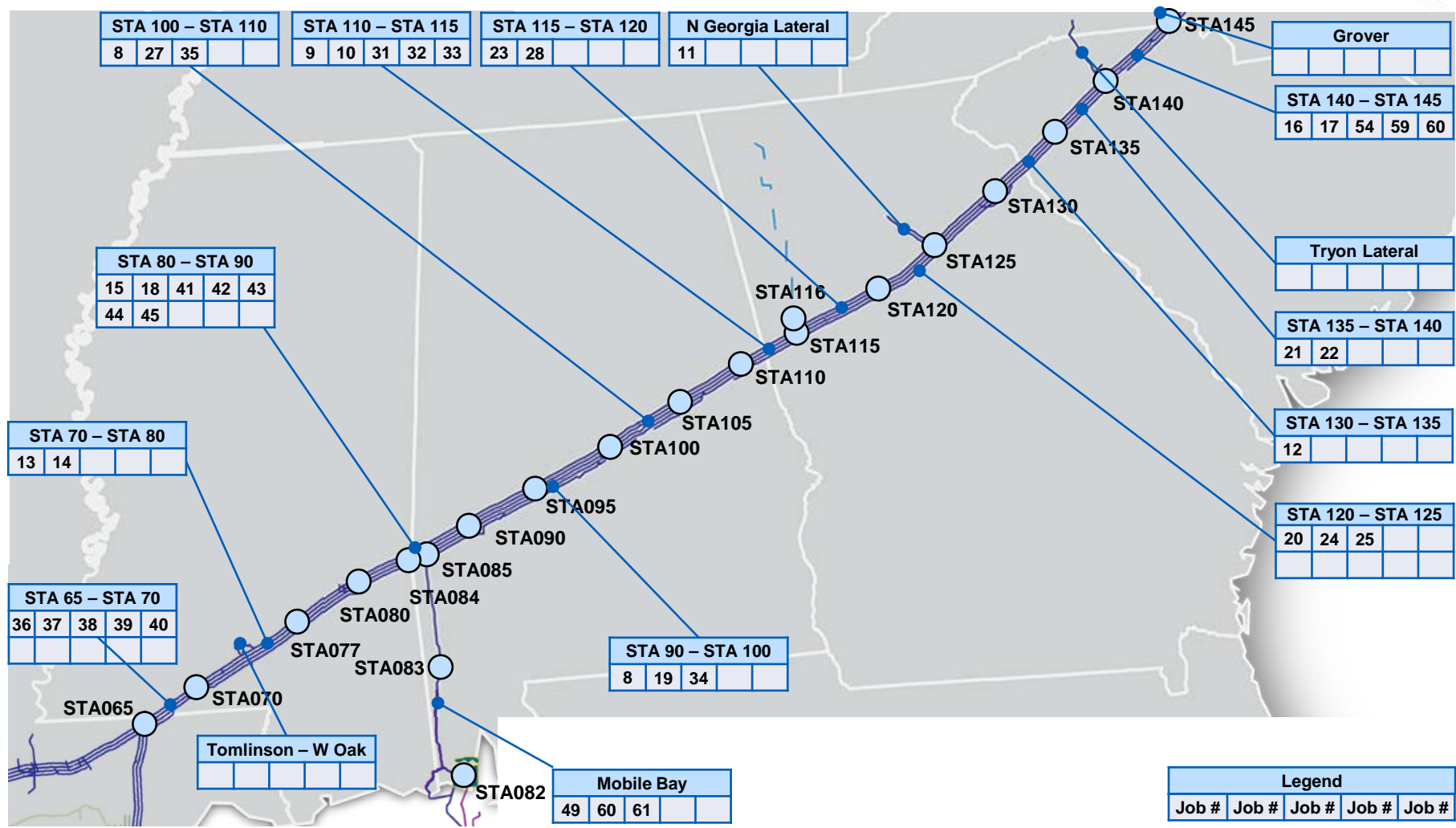
Texas & Louisiana Construction & Maintenance



Texas & Louisiana Construction & Maintenance

Preliminary Job Number	Start	Finish	Location	Zone	Maintenance Activity	Anticipated Impact	Meter No.	Meter Name	1Line Nominatable Location ID	Revision Date	Revision Notes
XX2023_001	8/21/2023	9/15/2023	26" MAINLINE A MAINA (T1218 to Station 17)	1	Pipeline Inspection	Minimal Impact during tool passage	4515	Banquette	9011581	10/12/2022	New Job Added
XX2023_002	4/10/2023	4/21/2023	36"/42" MAINLINE C MAINC (LW811 to Station 45)	3	Pipeline Inspection	Minimal Impact during tool passage	4449	Gillis	1007153	10/12/2022	New Job Added
XX2023_003	5/1/2023	5/12/2023	30" MAINLINE A MAINA (Station 45 to Atchafalya River)	3	Pipeline Inspection	Minimal Impact during tool passage	2652, 2839	Elba, Melville	1001379, 1001894	10/12/2022	New Job Added
XX2023_004	5/22/2023	6/2/2023	30" SOUTHEAST LOUISIANA LATERAL (SELA) C SELAC (Mosquito Bay to Station 62)	3	Pipeline Inspection	No meter Impact Anticipated at this time				10/12/2022	New Job Added
XX2023_005	7/10/2023	7/28/2023	24" NORTH HI ISLAND LATERAL C NHILC (Sabine River to LW1224)	3	Pipeline Inspection	Minimal Impact during tool passage	3594	Sabine Pass	9003822	10/12/2022	New Job Added
XX2023_006	7/10/2023	7/28/2023	24" NORTH HI ISLAND LATERAL D NHILD (Sabine River to V505)	3	Pipeline Inspection	Minimal Impact during tool passage	3594	Sabine Pass	9003822	10/12/2022	New Job Added
XX2023_007	9/25/2023	10/20/2023	30"/36" MAINLINE B MAINB (Station 45 to Station 50)	3	Pipeline Inspection	Minimal Impact during tool passage	2856	Duralde	1005046	10/12/2022	New Job Added

Mississippi, Alabama, Georgia, & South Carolina Construction & Maintenance



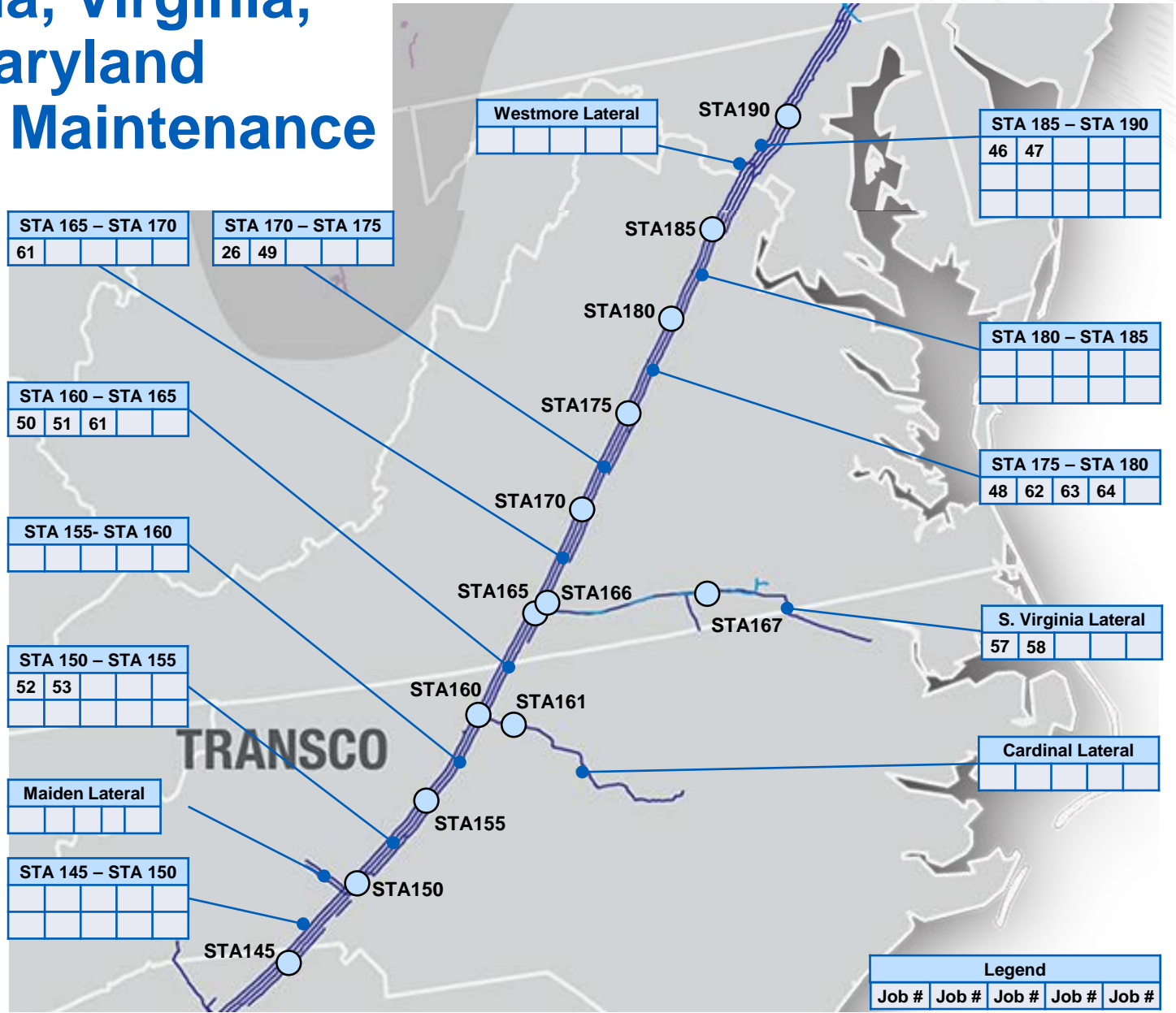
Mississippi, Alabama, Georgia, & South Carolina Construction & Maintenance

Preliminary Job Number	Start	Finish	Location	Zone	Maintenance Activity	Anticipated Impact	Meter No.	Meter Name	1Line Nominatable Location ID	Revision Date	Revision Notes
XX2023_008	1/23/2023	2/3/2023	TRANSCO STATION 100 - BILLINGSLEY, AL (100B10 to 100B20)	4	Facility Modification	Potential Meter Outage	7053	Town of Rockford	1006226	10/12/2022	New Job Added
XX2023_009	3/6/2023	3/24/2023	30" MAINLINE A MAINA (Station 110 to Station 120)	4	Pipeline Inspection	No meter Impact Anticipated at this time				10/12/2022	New Job Added
XX2023_010	3/8/2023	5/23/2023	TRANSCO STATION 110 - WADLEY, AL	4	Facility Maintenance	No meter Impact Anticipated at this time				10/12/2022	New Job Added
XX2023_011	3/27/2023	3/31/2023	16" NORTH GEORGIA EXTENSION LATERAL NGAA (Station 125 to 125GNB25)	4	Pipeline Inspection	No meter Impact Anticipated at this time				10/12/2022	New Job Added
XX2023_012	4/3/2023	4/7/2023	36' MAINLINE B MAINB (Station 130 to Station 140)	4	Pipeline Inspection	No meter Impact Anticipated at this time				10/12/2022	New Job Added
XX2023_013	4/17/2023	4/21/2023	30" EMINENCE STRG LATERAL B EMNB (Sta 77 to M193)	4	Pipeline Inspection	No meter Impact Anticipated at this time				10/12/2022	New Job Added
XX2023_014	5/1/2023	5/21/2023	36" MAINLINE C MAINC (70C40 to 84C0)	4	Line Outage	No meter Impact Anticipated at this time				10/12/2022	New Job Added
XX2023_015	5/1/2023	5/21/2023	36" MAINLINE C MAINC (84C20 to 95C0)	4	Line Outage	No meter Impact Anticipated at this time				10/12/2022	New Job Added
XX2023_016	5/16/2023	5/18/2023	TRANSCO STATION 140 - MOORE, SC	4	Facility Maintenance	No meter Impact Anticipated at this time				10/12/2022	New Job Added
XX2023_017	5/16/2023	5/18/2023	TRANSCO STATION 140 - MOORE, SC	4	Facility Maintenance	No meter Impact Anticipated at this time				10/12/2022	New Job Added
XX2023_018	5/22/2023	6/11/2023	36" MAINLINE C MAINC (84C0 to 90C1)	4	Line Outage	No meter Impact Anticipated at this time				10/12/2022	New Job Added
XX2023_019	5/22/2023	6/11/2023	36" MAINLINE C MAINC (95C0 to 100C1)	4	Line Outage	No meter Impact Anticipated at this time				10/12/2022	New Job Added
XX2023_020	5/31/2023	6/5/2023	TRANSCO STATION 125 - MONROE, GA	4	Facility Maintenance	No meter Impact Anticipated at this time				10/12/2022	New Job Added
XX2023_021	6/7/2023	6/13/2023	TRANSCO STATION 135 - ANDERSON, SC	4	Facility Maintenance	No meter Impact Anticipated at this time				10/12/2022	New Job Added
XX2023_022	6/7/2023	6/13/2023	TRANSCO STATION 135 - ANDERSON, SC	4	Facility Maintenance	No meter Impact Anticipated at this time				10/12/2022	New Job Added
XX2023_023	6/23/2023	8/21/2023	TRANSCO STATION 120 - STOCKBRIDGE, GA	4	Facility Maintenance	No meter Impact Anticipated at this time				10/12/2022	New Job Added
XX2023_024	7/5/2023	7/11/2023	TRANSCO STATION 125 - MONROE, GA	4	Facility Maintenance	No meter Impact Anticipated at this time				10/12/2022	New Job Added
XX2023_025	7/5/2023	7/11/2023	TRANSCO STATION 125 - MONROE, GA	4	Facility Maintenance	No meter Impact Anticipated at this time				10/12/2022	New Job Added
XX2023_033	9/23/2023	10/4/2023	TRANSCO STATION 115 - NEWNAN, GA	4	Facility Maintenance	No meter Impact Anticipated at this time				10/12/2022	New Job Added

Mississippi, Alabama, Georgia, & South Carolina Construction & Maintenance

Preliminary Job Number	Start	Finish	Location	Zone	Maintenance Activity	Anticipated Impact	Meter No.	Meter Name	1Line Nominatable Location ID	Revision Date	Revision Notes
XX2023_034			TRANSCO STATION 100 - BILLINGSLEY, AL (100B10 to 100B20)	4	Facility Modification	Potential Meter Outage	7053	Town of Rockford	1006226	10/12/2022	New Job Added
XX2023_035			MIDCONTINENT EXPRESS PINEVIEW MTR STA MS-3617	4	Facility Modification	Potential Meter Outage	3617	Midcontinent Express/Pineview MS	9004982	10/12/2022	New Job Added
XX2023_036			TRANSCO STATION 70 - TYLERTOWN, MS	4	Main Unit Outage	No meter Impact Anticipated at this time				10/12/2022	New Job Added
XX2023_037			TRANSCO STATION 70 - TYLERTOWN, MS	4	Electrical Outage	No meter Impact Anticipated at this time				10/12/2022	New Job Added
XX2023_038			TRANSCO STATION 70 - TYLERTOWN, MS	4	Main Unit Outage	No meter Impact Anticipated at this time				10/12/2022	New Job Added
XX2023_039			TRANSCO STATION 70 - TYLERTOWN, MS	4	Main Unit Outage	No meter Impact Anticipated at this time				10/12/2022	New Job Added
XX2023_040			TRANSCO STATION 70 - TYLERTOWN, MS	4	Main Unit Outage	No meter Impact Anticipated at this time				10/12/2022	New Job Added
XX2023_041			TRANSCO STATION 90 - MYRTLEWOOD, AL	4	Main Unit Outage	No meter Impact Anticipated at this time				10/12/2022	New Job Added
XX2023_042			TRANSCO STATION 90 - MYRTLEWOOD, AL	4	Main Unit Outage	No meter Impact Anticipated at this time				10/12/2022	New Job Added
XX2023_043			TRANSCO STATION 90 - MYRTLEWOOD, AL	4	Main Unit Outage	No meter Impact Anticipated at this time				10/12/2022	New Job Added
XX2023_044			TRANSCO STATION 90 - MYRTLEWOOD, AL	4	Main Unit Outage	No meter Impact Anticipated at this time				10/12/2022	New Job Added
XX2023_045			TRANSCO STATION 90 - MYRTLEWOOD, AL	4	Main Unit Outage	No meter Impact Anticipated at this time				10/12/2022	New Job Added

North Carolina, Virginia, & Maryland Construction & Maintenance



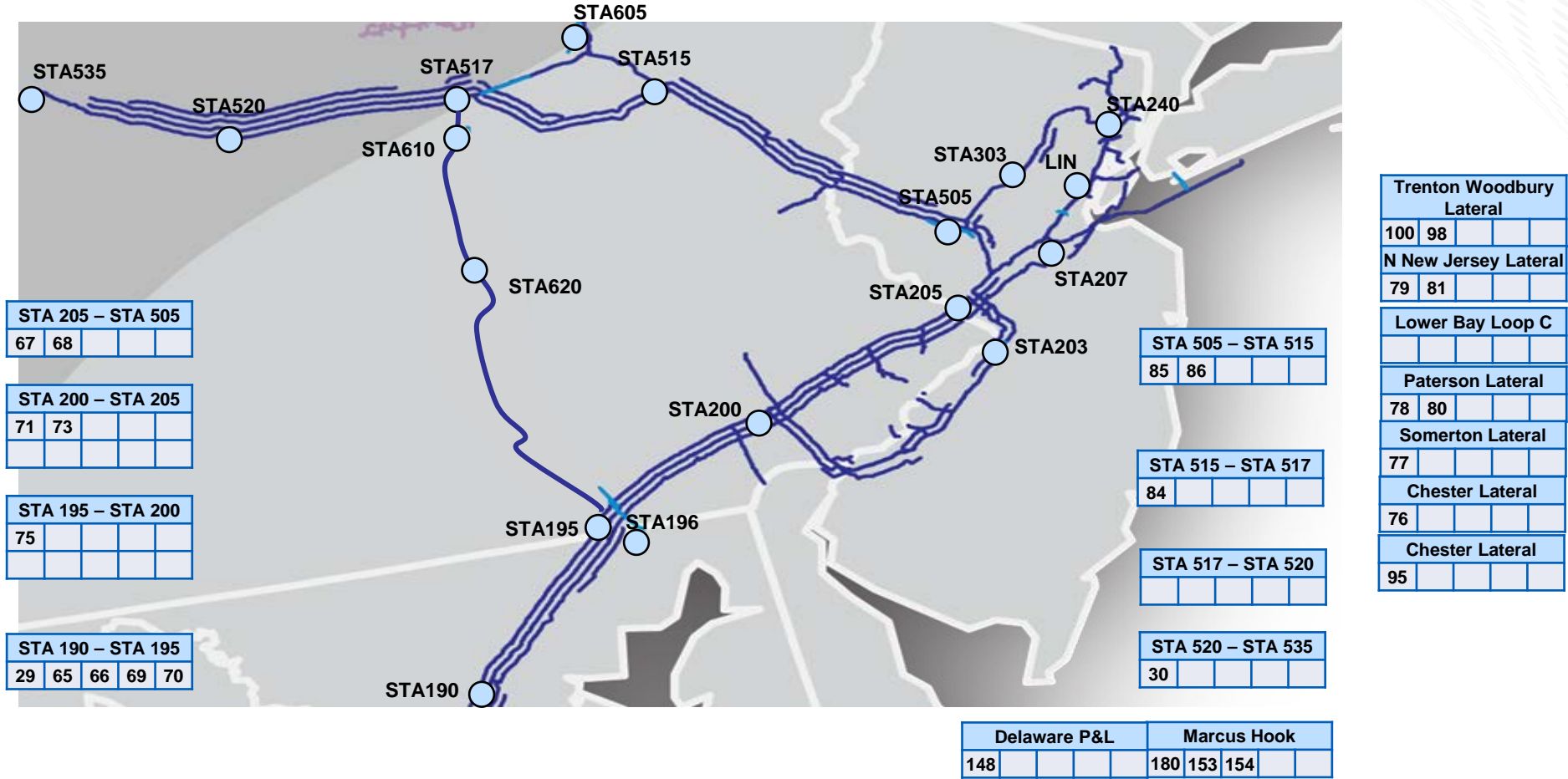
North Carolina, Virginia, & Maryland Construction & Maintenance

Preliminary Job Number	Start	Finish	Location		Zone Maintenance Activity	Anticipated Impact	Meter No.	Meter Name	1Line Nominatable Location ID	Revision Date	Revision Notes
XX2023_046	1/16/2023	1/20/2023	36"/42" MAINLINE C MAINC (R8 to 185C20)	5	Anomaly Investigation Placeholder	No meter Impact Anticipated at this time				10/12/2022	New Job Added
XX2023_047	1/21/2023	1/27/2023	30"/36" MAINLINE B MAINB (V358 to 185B14)	5	Anomaly Investigation Placeholder	No meter Impact Anticipated at this time				10/12/2022	New Job Added
XX2023_048	1/28/2023	1/31/2023	36" MAINLINE C MAINC (175C20 to 180C15)	5	Anomaly Investigation Placeholder	No meter Impact Anticipated at this time				10/12/2022	New Job Added
XX2023_049	2/1/2023	2/16/2023	36" MAINLINE C MAINC (170C0 to 175C20)	5	Anomaly Investigation Placeholder	No meter Impact Anticipated at this time				10/12/2022	New Job Added
XX2023_050	2/17/2023	2/20/2023	36" MAINLINE C MAINC (160C15 to 170C0)	5	Anomaly Investigation Placeholder	No meter Impact Anticipated at this time				10/12/2022	New Job Added
XX2023_051	2/20/2023	2/24/2023	30" MAINLINE B MAINB (160B10 to 170B10)	5	Anomaly Investigation Placeholder	No meter Impact Anticipated at this time				10/12/2022	New Job Added
XX2023_052	2/25/2023	3/13/2023	30" MAINLINE A MAINA (150A0 to 160A0)	5	Anomaly Investigation Placeholder	No meter Impact Anticipated at this time				10/12/2022	New Job Added
XX2023_053	3/13/2023	4/14/2023	42" MAINLINE D MAIND (150D0 to 155D2)	5	Anomaly Investigation Placeholder	No meter Impact Anticipated at this time				10/12/2022	New Job Added
XX2023_054	4/15/2023	4/20/2023	36" MAINLINE C MAINC (145C0 to 150C0)	5	Anomaly Investigation Placeholder	No meter Impact Anticipated at this time				10/12/2022	New Job Added
XX2023_055	4/21/2023	4/26/2023	30" MAINLINE A MAINA	5	Anomaly Investigation Placeholder	No meter Impact Anticipated at this time				10/12/2022	New Job Added
XX2023_056	4/27/2023	5/2/2023	30" MAINLINE A MAINA	5	Anomaly Investigation Placeholder	No meter Impact Anticipated at this time				10/12/2022	New Job Added
XX2023_057	5/3/2023	5/24/2023	20" SOUTH VIRGINIA LAT A SVL	5	Anomaly Investigation Placeholder	No meter Impact Anticipated at this time				10/12/2022	New Job Added
XX2023_058	5/25/2023	6/14/2023	20" SOUTH VIRGINIA LAT A SVL (VS174 to VSA110)	5	Anomaly Investigation Placeholder	No meter Impact Anticipated at this time				10/12/2022	New Job Added
XX2023_059	6/15/2023	7/26/2023	30" MAINLINE A MAINA (140A0 to 145A0)	5	Anomaly Investigation Placeholder	No meter Impact Anticipated at this time				10/12/2022	New Job Added
XX2023_060	7/27/2023	8/17/2023	36" MAINLINE C MAINC (140C0 to 145C0)	5	Anomaly Investigation Placeholder	No meter Impact Anticipated at this time				10/12/2022	New Job Added

North Carolina, Virginia, & Maryland Construction & Maintenance

Preliminary Job Number	Start	Finish	Location	Zone	Maintenance Activity	Anticipated Impact	Meter No.	Meter Name	1Line Nominatable Location ID	Revision Date	Revision Notes
XX2023_046	1/16/2023	1/20/2023	36"/42" MAINLINE C MAINC (R8 to 185C20)	5	Anomaly Investigation Placeholder	No meter Impact Anticipated at this time				10/12/2022	New Job Added
XX2023_047	1/21/2023	1/27/2023	30"/36" MAINLINE B MAINB (V358 to 185B14)	5	Anomaly Investigation Placeholder	No meter Impact Anticipated at this time				10/12/2022	New Job Added
XX2023_061	9/11/2023	10/15/2023	30"/36" MAINLINE B MAINB (160B10 to 170B10)	5	Anomaly Investigation Placeholder	No meter Impact Anticipated at this time				10/12/2022	New Job Added
XX2023_062	10/16/2023	10/27/2023	30" MAINLINE B MAINB (175B0 to 175B20)	5	Anomaly Investigation Placeholder	No meter Impact Anticipated at this time				10/12/2022	New Job Added
XX2023_063	10/28/2023	11/4/2023	30" MAINLINE B MAINB (170B0 to 175B20)	5	Anomaly Investigation Placeholder	No meter Impact Anticipated at this time				10/12/2022	New Job Added
XX2023_064	11/5/2023	12/8/2023	30" MAINLINE A MAINA (James to 180A0)	5	Anomaly Investigation Placeholder	No meter Impact Anticipated at this time				10/12/2022	New Job Added

Pennsylvania & New Jersey Construction & Maintenance



Pennsylvania & New Jersey Construction & Maintenance

Preliminary Job Number	Start	Finish	Location	Zone	Maintenance Activity	Anticipated Impact	Meter No.	Meter Name	1Line Nominatable Location ID	Revision Date	Revision Notes
XX2023_065	4/17/2023	4/21/2023	30" MAINLINE B MAINB (Station 195 to 195B20)	6	Anomaly Investigation Placeholder	No meter Impact Anticipated at this time				10/12/2022	New Job Added
XX2023_066			30" MAINLINE B MAINB (Station 195 to 195B20)	6	Anomaly Investigation Placeholder	No meter Impact Anticipated at this time				10/12/2022	New Job Added
XX2023_067			30" MAINLINE B MAINB (195B20 to 505B0)	6	Anomaly Investigation Placeholder	No meter Impact Anticipated at this time				10/12/2022	New Job Added
XX2023_068			30" MAINLINE B MAINB (195B20 to 505B0)	6	Anomaly Investigation Placeholder	No meter Impact Anticipated at this time				10/12/2022	New Job Added
XX2023_069			30" MAINLINE A MAINA (Station 195 to 195A5)	6	Anomaly Investigation Placeholder	No meter Impact Anticipated at this time				10/12/2022	New Job Added
XX2023_070			30" MAINLINE A MAINA (195A5 to P347)	6	Anomaly Investigation Placeholder	No meter Impact Anticipated at this time				10/12/2022	New Job Added
XX2023_071			30" MAINLINE A MAINA (200A0 to 200A23)	6	Anomaly Investigation Placeholder	No meter Impact Anticipated at this time				10/12/2022	New Job Added
XX2023_072			30" MAINLINE A MAINA	6	Anomaly Investigation Placeholder	No meter Impact Anticipated at this time				10/12/2022	New Job Added
XX2023_073			30" MAINLINE A MAINA (200A42 to 200A105)	6	Anomaly Investigation Placeholder	No meter Impact Anticipated at this time				10/12/2022	New Job Added
XX2023_074			30" MAINLINE A MAINA	6	Anomaly Investigation Placeholder	No meter Impact Anticipated at this time				10/12/2022	New Job Added
XX2023_075			36" MAINLINE C MAINC (Station 195 to 200C10)	6	Anomaly Investigation Placeholder	Potential Meter Outage				10/12/2022	New Job Added
XX2023_076			8" CHESTER LATERAL CHESA (P470 to P475)	6	Anomaly Investigation Placeholder	Potential Meter Outage	6003	Chester	1003374	10/12/2022	New Job Added
XX2023_077			12" PWG SOMERTON LATERAL SOMRA (P384 to P386)	6	Anomaly Investigation Placeholder	Potential Meter Outage	6192	Somerton	1003463	10/12/2022	New Job Added
XX2023_078			10" PATERSON LATERAL PATXA (J645 to J651)	6	Anomaly Investigation Placeholder	Potential Meter Outage	6047, 6091	Paterson, Fairlawn	1003329, 1003324	10/12/2022	New Job Added
XX2023_079			24" NORTH NEW JERSEY EXTENSION NNJLA (J647 to J648)	6	Anomaly Investigation Placeholder	Potential Meter Outage	3091, 6087, 6147, 6047, 6091	Rivervale, Emerson, Paramus, Paterson, Fairlawn	1003329, 1003324	10/12/2022	New Job Added

Pennsylvania & New Jersey Construction & Maintenance

Preliminary Job Number	Start	Finish	Location	Zone	Maintenance Activity	Anticipated Impact	Meter No.	Meter Name	1Line Nominatable Location ID	Revision Date	Revision Notes
XX2023_080			30" PATERSON LATERAL PATLA (J597 to J641)	6	Anomaly Investigation Placeholder	Potential Meter Outage	3091, 6087, 6147, 6047, 6091	Rivervale, Emerson, Paramus, Paterson, Fairlawn	1003329, 1003324	10/12/2022	New Job Added
XX2023_081			NORTH NEW JERSEY EXTENSION TAKEOFF SITE VS-J647	6	Anomaly Investigation Placeholder	No meter Impact Anticipated at this time				10/12/2022	New Job Added
XX2023_082			BURLINGTON CO-GEN MTR STA	6	Anomaly Investigation Placeholder	No meter Impact Anticipated at this time				10/12/2022	New Job Added
XX2023_083			36" MAINLINE C LEIDC (Station 520 to 520LC30)	6	Anomaly Investigation Placeholder	No meter Impact Anticipated at this time				10/12/2022	New Job Added
XX2023_084			24" MAINLINE A LEIDA (515LA1 to 535LA0)	6	Anomaly Investigation Placeholder	No meter Impact Anticipated at this time				10/12/2022	New Job Added
XX2023_085			24" PENN LEIDY LINE A LEIDA (505LA62 to 515LA0)	6	Anomaly Investigation Placeholder	No meter Impact Anticipated at this time				10/12/2022	New Job Added
XX2023_086			24" PENN LEIDY LINE A LEIDA (505LA62 to 515LA0)	6	Anomaly Investigation Placeholder	No meter Impact Anticipated at this time				10/12/2022	New Job Added
XX2023_087			TR14 PIPELINE	6	Anomaly Investigation Placeholder	No meter Impact Anticipated at this time				10/12/2022	New Job Added
XX2023_088			TRANSCO STATION 535 - AUSTIN, PA	6	Anomaly Investigation Placeholder	No meter Impact Anticipated at this time				10/12/2022	New Job Added
XX2023_089			TRENTON-WOODBURY A LATERAL TRWDA (J670 to Mount Laurel M&R)	6	Pipeline Inspection	No meter Impact Anticipated at this time				10/12/2022	New Job Added
XX2023_090			30" LEIDY LINE A LEIDA	6	Pipeline Inspection	No meter Impact Anticipated at this time				10/12/2022	New Job Added
XX2023_091			24" PENN LEIDY LINE A LEIDA	6	Pipeline Inspection	No meter Impact Anticipated at this time				10/12/2022	New Job Added
XX2023_092			24" PENN LEIDY LINE A LEIDA	6	Pipeline Inspection	No meter Impact Anticipated at this time				10/12/2022	New Job Added
XX2023_093			20" MARCUS HK-WOODBURY C LATERAL MHWDC	6	Pipeline Inspection	No meter Impact Anticipated at this time				10/12/2022	New Job Added
XX2023_094			16" PGW PLANT "B" LATERAL PGWBA	6	Pipeline Inspection	No meter Impact Anticipated at this time				10/12/2022	New Job Added

Pennsylvania & New Jersey Construction & Maintenance

Preliminary Job Number	Start	Finish	Location	Zone	Maintenance Activity	Anticipated Impact	Meter No.	Meter Name	1Line Nominatable Location ID	Revision Date	Revision Notes
XX2023_095			12" ORELAND PWG EXTENSION OPGWA	6	Pipeline Inspection	Potential Meter Outage	6021, 6239	Ashmead Road, Oreland, Oreland PGW	1003464, 1003378, 1003460	10/12/2022	New Job Added
XX2023_096			LOWER BAY LOOP C 200-55 VS	6	Pipeline Inspection	No meter Impact Anticipated at this time				10/12/2022	New Job Added
XX2023_097			16" HAMILTON-MERCER M&R LATERAL MERCA	6	Pipeline Inspection	Potential Meter Outage	6121	Hamilton Mercer	1003333	10/12/2022	New Job Added
XX2023_098			TRENTON WOODBURY TAKE-OFF VS	6	Pipeline Inspection	No meter Impact Anticipated at this time				10/12/2022	New Job Added
XX2023_099			ROCKAWAY MTR STA MS-6334 (FLOYD BENNETT)	6	Pipeline Inspection	No meter Impact Anticipated at this time				10/12/2022	New Job Added
XX2023_100			6" & 12" TRENTON LATERAL TRENA	6	Pipeline Inspection	No meter Impact Anticipated at this time				10/12/2022	New Job Added
XX2023_101			TRANSCO STATION 535 - AUSTIN, PA	6	Pipeline Inspection	No meter Impact Anticipated at this time				10/12/2022	New Job Added
XX2023_102			TRANSCO STATION 535 - AUSTIN, PA	6	Pipeline Inspection	No meter Impact Anticipated at this time				10/12/2022	New Job Added

Now What?

- Individual Project Updates
 - Job numbers and outage dates are subject to change
 - Pipeline Control is still evaluating maintenance scheduled for 2023
 - Expect more jobs to be posted in the coming months
 - 2023 Transco 1Line maintenance table will be posted in a single posting with the current 2022 table
 - 1Line table formatting subject to change
 - Job numbering may change to assist with better internal tracking

Gas Control Team

- Ross Sinclair (Manager, Pipeline Control)
 - 713-215-2688
 - Ross.M.Sinclair@Williams.com
- Richard Truxell (Consultant, Pipeline Control)
 - 713-215-4044
 - Richard.W.Truxell@Williams.com
- Matthew Walsh (Maintenance Coordinator, Pipeline Control)
 - 434-987-8755
 - Matthew.walsh@williams.com
- Brian Cargill (Supervisor, Pipeline Control)
 - 713-215-4258
 - Brian.cargill@Williams.com
- Seth Johnson (Supervisor, Pipeline Control)
 - 832-844-8567
 - Seth.johnson@Williams.com

FIND US ONLINE



www.williams.com/newsroom



Facebook.com/WilliamsEnergyCo



[@WilliamsUpdates](https://twitter.com/WilliamsUpdates)



Channel: Williams Energy Company



Linkedin.com/company/Williams-Company



[@williamsenergy](https://instagram.com/williamsenergy)





WE MAKE CLEAN ENERGY HAPPEN®

Thank You & Questions