



# Meter Aggregation and Disaggregation

# Why would I want to aggregate or disaggregate my meter locations?

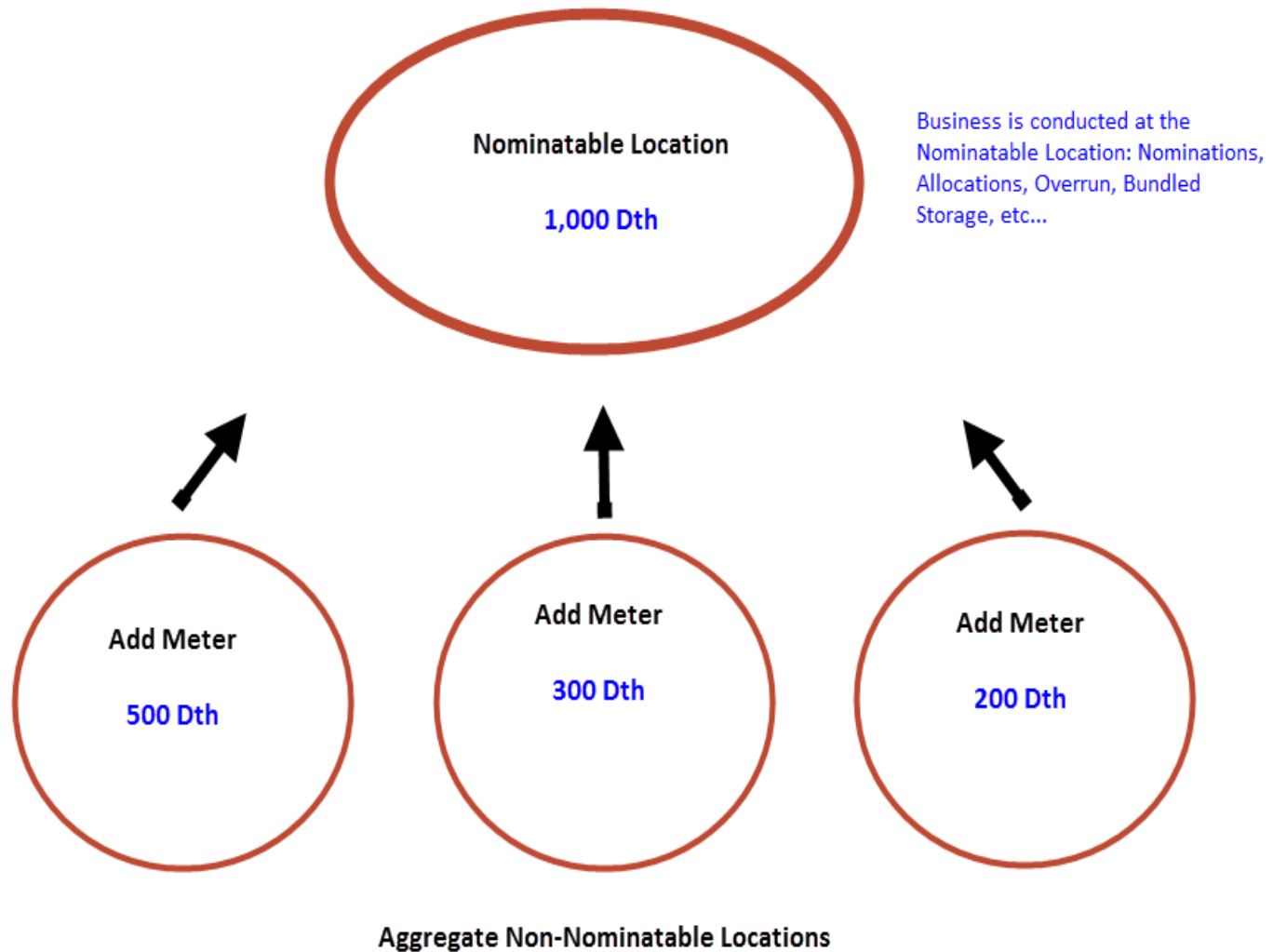
- The aggregation and disaggregation of meters provides for the creation of nominatable locations to be used in daily business functions (nomination, scheduling, confirmation and allocations) which lessens the administrative burden for Transco's customers and location operators
- Aggregate locations provide for the combination of one or more physical meters with other physical meters
- Disaggregate locations provides the point operator the ability to distribute a metered quantity to multiple nominatable locations

Note: Transco and point operators must mutually agree to the creation and modification of aggregate and disaggregate locations

# Aggregation Type 1 – Swing Service Delivery Point

- As defined in Transco's General Terms and Conditions (GT&C) Section 2: Swing Service Delivery Point is “A location at which a local distribution company, a municipality, an industrial customer, or a power generation plant takes deliveries of gas from Transco's system.”
- Requirements:
  - All delivery meters must be within the same rate zone,
  - All delivery meters must have the same point operator, and
  - Each delivery meter can only be associated with one Swing Service Delivery Point
- Allocation of the physical quantity will be determined as set forth in Section 18.1 of the GT&C

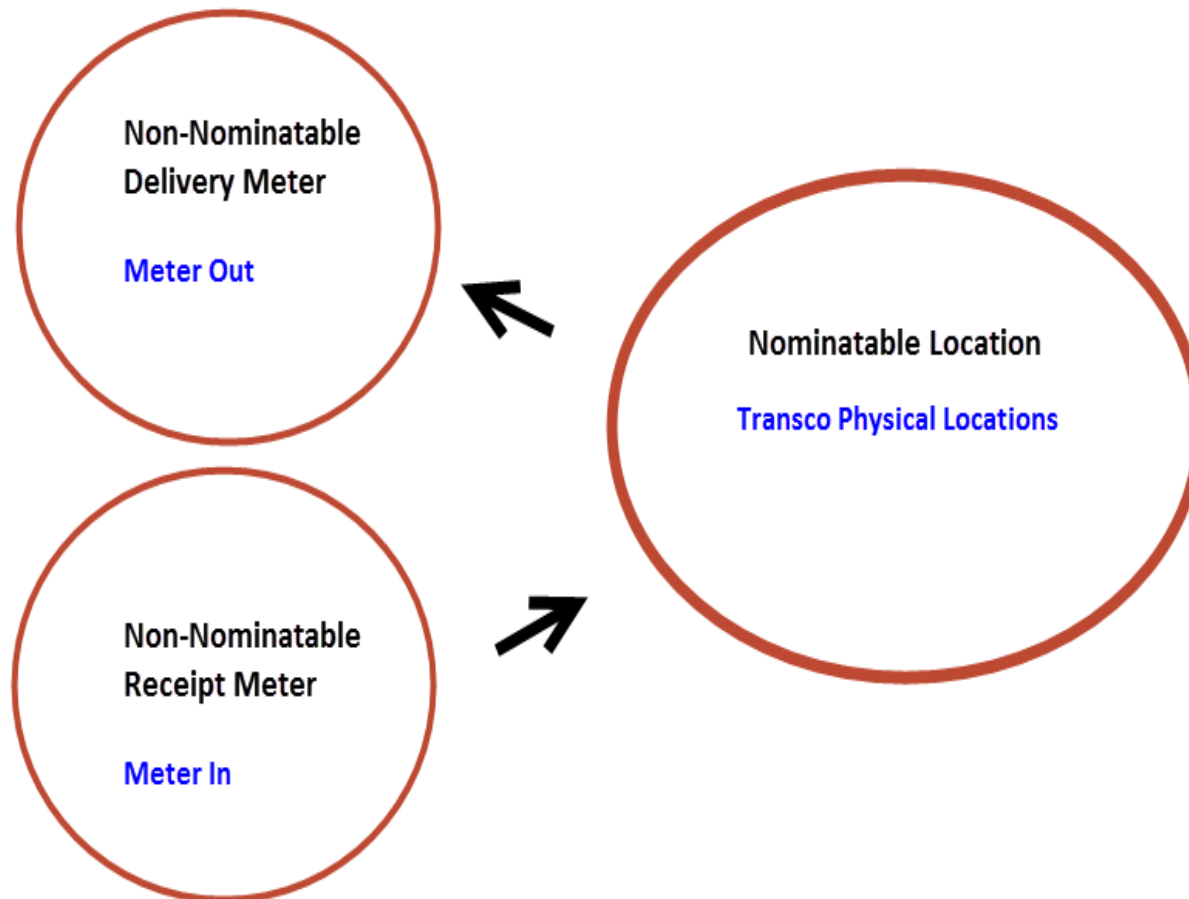
## Aggregation Type 1: Swing Service Delivery Point



# Aggregation Type 2 – Plants, Pipeline Interconnects and Production Facilities

- All meters must have the same point operator
- Applicable to processing plants, pipeline interconnects and production facilities where there may be concurrent receipts and deliveries at the same location

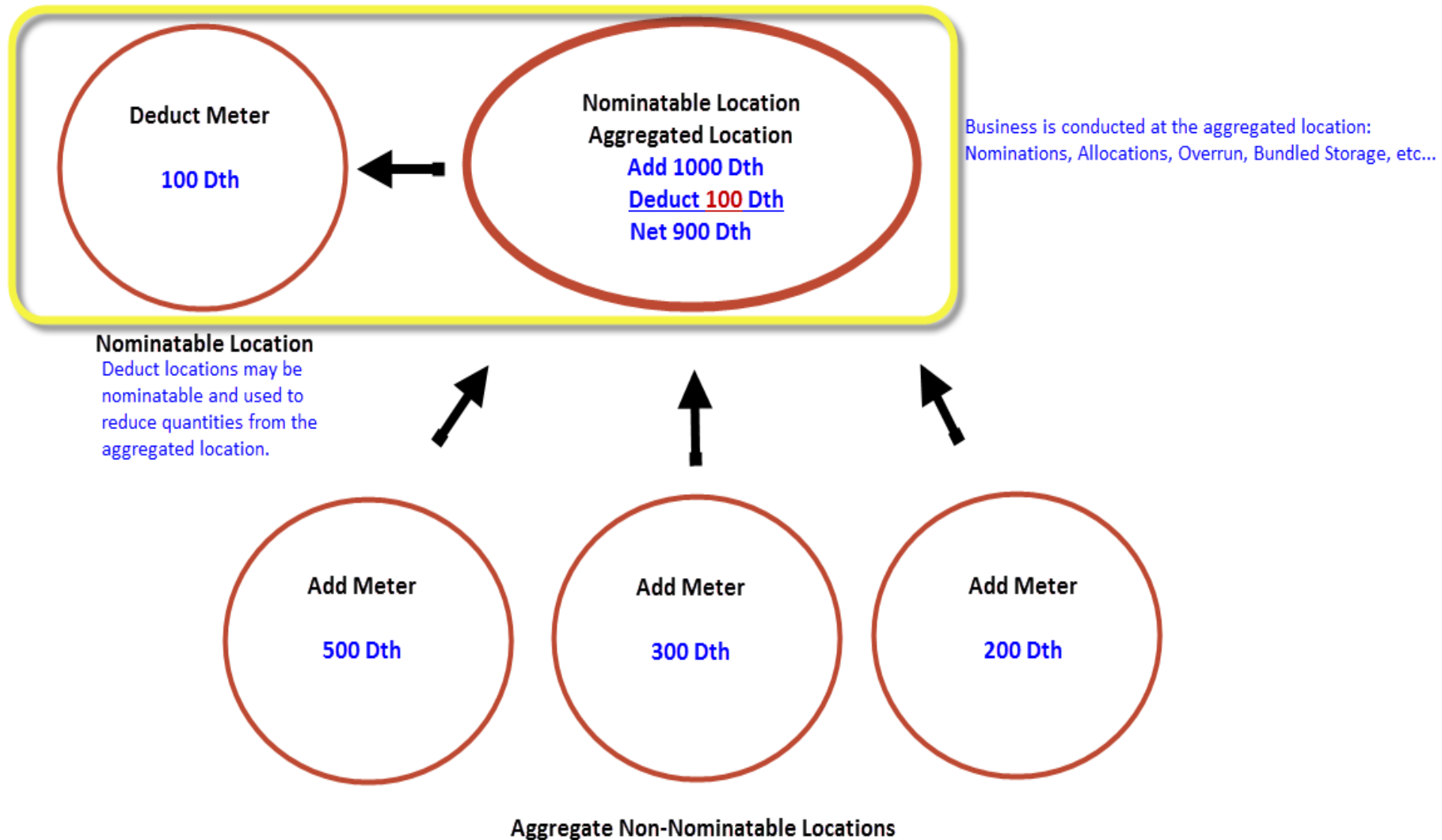
## Aggregation Type 2: Plants, Pipeline Interconnects and Production Facilities



# Disaggregation Type 1 – Swing Service Delivery Point

- As defined in Transco's General Terms and Conditions (GT&C) Section 2: Swing Service Delivery Point is “A location at which a local distribution company, a municipality, an industrial customer, or a power generation plant takes deliveries of gas from Transco's system.”
- Requirements:
  - All delivery meters must be within the same rate zone,
  - All delivery meters must have the same point operator, and
  - Each delivery meter can only be associated with one Swing Service Delivery Point
- Allocation of the physical quantity will be determined as set forth in Section 18.1 of the GT&C

## Dissaggregation Type 1: Swing Service Delivery Point



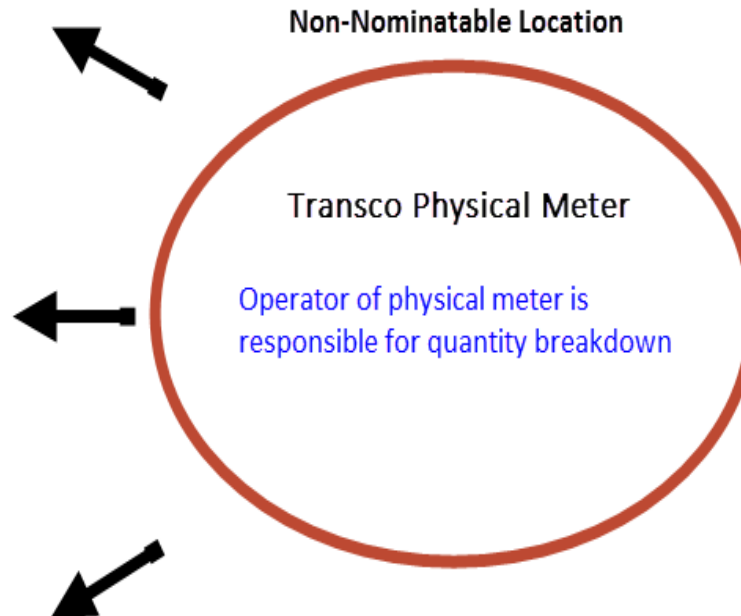


# Disaggregation Type 2 – Receipt (Behind the Meter)

- Requirements:
  - More than one source flows through Transco's meter, and the Pipe owned by Transco is behind the physical meter, OR
  - Discounts and gathering fees may apply to one or more production facilities, but not all production facilities, behind the physical meter
- Location operator is responsible for providing quantity breakdown electronically prior to Transco's processing of the gas day to ensure accurate allocation of measured quantities

## Disaggregation Type 2: Receipt (Behind the Meter)

Behind the meter locations



Nomination and allocation happens at the "Behind the Meter" locations.

Transco measures gas at the physical meter

# Disaggregation Type 3 – Delivery (Beyond the Meter)

- Requirements:
  - Physical measurement must be distributed to multiple point operators
  - Physical meter is non-nominatable
  - Disaggregated quantities are distributed to Swing Service Delivery Points
- Location operator is responsible for providing quantity breakdown electronically prior to Transco's processing of the gas day to ensure accurate allocation of measured quantities

### Disaggregation Type 3: Delivery (Beyond the Meter)

