



WE MAKE ENERGY HAPPEN

NYSE: WMB | [williams.com](http://williams.com)

# 2019 Winter Operations Meetings

*Houston / Atlanta / Charlotte / Newark*



# Forward-looking Statements

- > The reports, filings, and other public announcements of The Williams Companies, Inc. (Williams) may contain or incorporate by reference statements that do not directly or exclusively relate to historical facts. Such statements are “forward-looking statements” within the meaning of Section 27A of the Securities Act of 1933, as amended (Securities Act), and Section 21E of the Securities Exchange Act of 1934, as amended (Exchange Act). These forward-looking statements relate to anticipated financial performance, management’s plans and objectives for future operations, business prospects, outcome of regulatory proceedings, market conditions, and other matters. We make these forward-looking statements in reliance on the safe harbor protections provided under the Private Securities Litigation Reform Act of 1995. All statements, other than statements of historical facts, included herein that address activities, events or developments that we expect, believe or anticipate will exist or may occur in the future, are forward-looking statements. Forward-looking statements can be identified by various forms of words such as “anticipates,” “believes,” “seeks,” “could,” “may,” “should,” “continues,” “estimates,” “expects,” “forecasts,” “intends,” “might,” “goals,” “objectives,” “targets,” “planned,” “potential,” “projects,” “scheduled,” “will,” “assumes,” “guidance,” “outlook,” “in-service date” or other similar expressions. These forward-looking statements are based on management’s beliefs and assumptions and on information currently available to management and include, among others, statements regarding:
- Levels of dividends to Williams stockholders;
  - Future credit ratings of Williams and its affiliates;
  - Amounts and nature of future capital expenditures;
  - Expansion and growth of our business and operations;
  - Expected in-service dates for capital projects;
  - Financial condition and liquidity;
  - Business strategy;
  - Cash flow from operations or results of operations;
  - Seasonality of certain business components;
  - Natural gas and natural gas liquids prices, supply, and demand;
  - Demand for our services.

## Forward-looking Statements (cont'd)

**Forward-looking statements are based on numerous assumptions, uncertainties and risks that could cause future events or results to be materially different from those stated or implied herein. Many of the factors that will determine these results are beyond our ability to control or predict. Specific factors that could cause actual results to differ from results contemplated by the forward-looking statements include, among others, the following:**

- Whether we are able to pay current and expected levels of dividends;
- Whether we will be able to effectively execute our financing plan;
- Availability of supplies, market demand, and volatility of prices;
- Inflation, interest rates, and general economic conditions (including future disruptions and volatility in the global credit markets and the impact of these events on customers and suppliers);
- The strength and financial resources of our competitors and the effects of competition;
- Whether we are able to successfully identify, evaluate and timely execute our capital projects and investment opportunities;
- Our ability to acquire new businesses and assets and successfully integrate those operations and assets into existing businesses as well as successfully expand our facilities, and to consummate asset sales on acceptable terms;
- Development and rate of adoption of alternative energy sources;
- The impact of operational and developmental hazards and unforeseen interruptions;
- The impact of existing and future laws and regulations, the regulatory environment, environmental liabilities, and litigation, as well as our ability to obtain necessary permits and approvals, and achieve favorable rate proceeding outcomes;
- Our costs and funding obligations for defined benefit pension plans and other postretirement benefit plans;
- Changes in maintenance and construction costs as well as our ability to obtain sufficient construction related inputs including skilled labor;
- Changes in the current geopolitical situation;
- Our exposure to the credit risk of our customers and counterparties;
- Risks related to financing, including restrictions stemming from debt agreements, future changes in credit ratings as determined by nationally recognized credit rating agencies and the availability and cost of capital;
- The amount of cash distributions from and capital requirements of our investments and joint ventures in which we participate;

## Forward-looking Statements (cont'd)

- Risks associated with weather and natural phenomena, including climate conditions and physical damage to our facilities;
- Acts of terrorism, cybersecurity incidents, and related disruptions;
- Additional risks described in our filings with the Securities and Exchange Commission (SEC).

**> Given the uncertainties and risk factors that could cause our actual results to differ materially from those contained in any forward-looking statement, we caution investors not to unduly rely on our forward-looking statements. We disclaim any obligations to and do not intend to update the above list or announce publicly the result of any revisions to any of the forward-looking statements to reflect future events or developments.**

**> In addition to causing our actual results to differ, the factors listed above and referred to below may cause our intentions to change from those statements of intention set forth herein. Such changes in our intentions may also cause our results to differ. We may change our intentions, at any time and without notice, based upon changes in such factors, our assumptions, or otherwise.**

**> Because forward-looking statements involve risks and uncertainties, we caution that there are important factors, in addition to those listed above, that may cause actual results to differ materially from those contained in the forward-looking statements. For a detailed discussion of those factors, see Part I, Item 1A. Risk Factors in our Annual Report on Form 10-K filed with the SEC on February 21, 2019.**

# Introduction

## Agenda

### ❖ Introduction - Safety Moment

- Cyber Security

### ❖ Pipeline Control

- Organizational Update
- Winter Outlook
- 2020 Planned Construction and Maintenance

### ❖ Commercial I

- Organizational Update
- Customer Focus Group
- Rate Case Update

### ❖ Break

### ❖ Commercial II

- State of the Market
- Project Updates
- Business Opportunities

# Safety Moment - Cyber Security

# Bad Ads and Popups

## The Problem?

### Malicious advertisements (Malvertising):

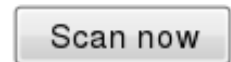
- Malicious code can be injected into online advertisements which can redirect you to malicious sites or download malware.
- The potential to be infected exists even if a user does not click on the infected ads.
- Due to the complexity of some websites ad networks, even big sites can unknowingly host infected ads, and the people responsible can often be hard to track down.

### Malicious popups

- Popups can not only be annoying, they can contain false information, links to malicious websites, or try to trick you into entering personal information.
- Some tech support scams will use fake error messages in the form of internet popups to get users to contact them thinking there is something wrong with their computer.
- The scammers will try to gain the trust of any users who contact them and sell them fake computer security services, or get personal information from the user's computer (like banking or credit card info).



**Your PC is infected!**



[Update your antivirus \(free\)](#)

# Bad Ads and Popups

## How To Protect Yourself

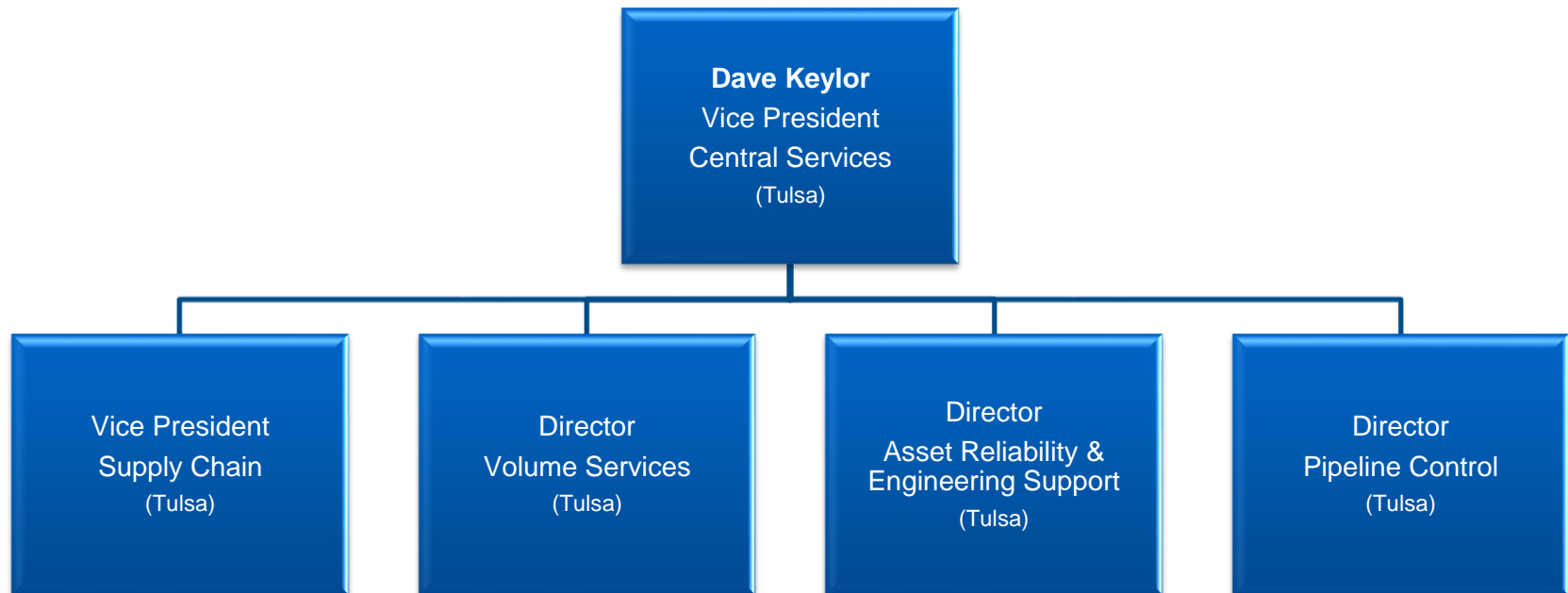
- Use an internet browser with built in adblocking and other security features, and learn how to customize them.
- Install browser addons for blocking ads and other potentially malicious elements.
- Use antivirus/antimalware software and keep it updated.
- Keep common software like Adobe products updated since these can have vulnerabilities that can be exploited to spread malware.
- Be careful where you go and what you click!



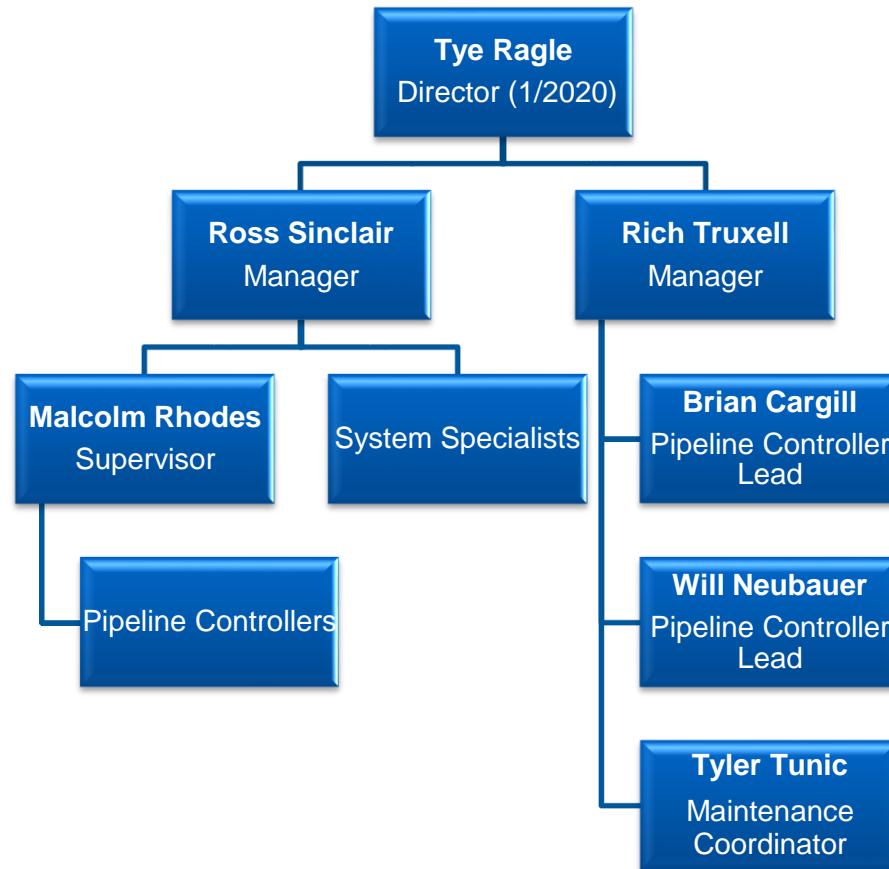


# Pipeline Control

# Central Services



# Pipeline Control Houston



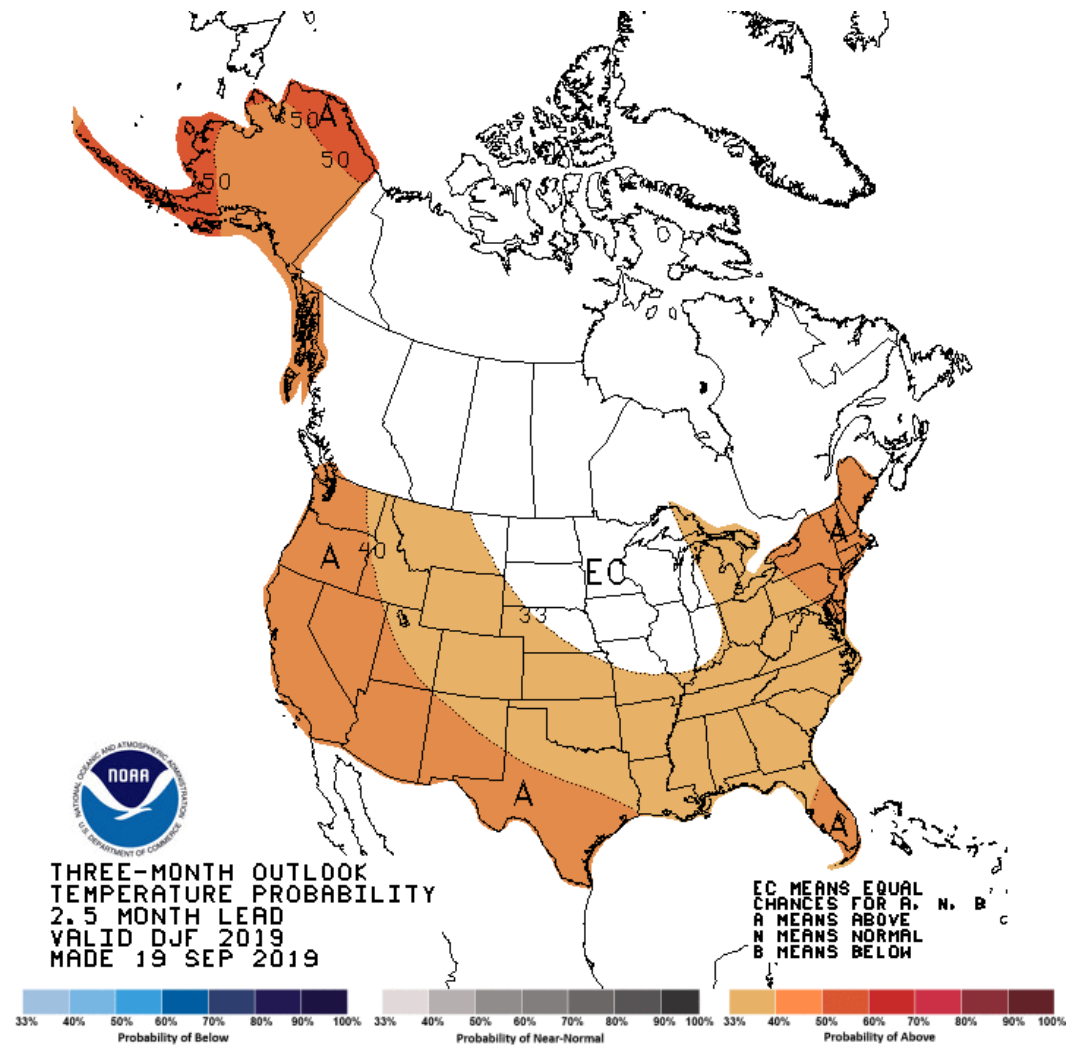
# Weather Predictions



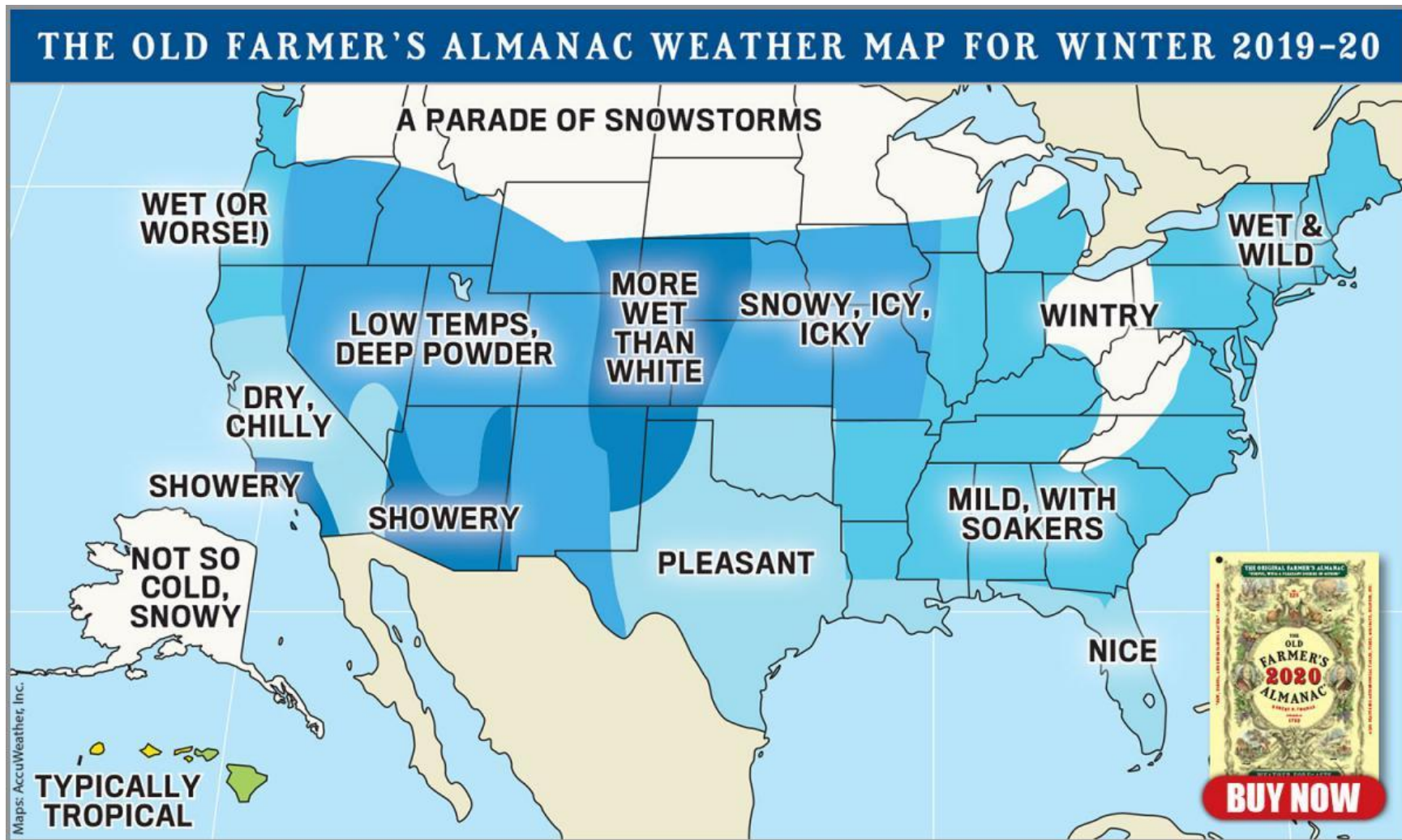
Or



# Weather Predictions



# Weather Predictions





# Weather Predictions



## Weather Predictions





# Operational Opportunities

## > Imbalance Management

- Operational Flow Order (OFO)
  - Imbalance creation continues to be challenging
  - Bracketed OFO - Resulting in flatter imbalances
  - Other solutions – Customer Focus Group
  - Cash-out pricing
- Priority of Service
  - Limiting use of High Burn Limit Values (HBLV) during periods of higher utilization

## > Non-ratable deliveries

- Hourly flow volatility creates operating challenges

## > Outages - Maintenance and Construction Activities

- Significant volume of activity in 2019
- 2020 is looking like another busy year

# Construction and Maintenance

# Types of Construction and Maintenance Jobs

- > **Pipeline Inspection**
- > **Anomaly Investigation**
- > **Pipe Replacement**
- > **Hydrotest**
- > **Facility Modification**
- > **Facility Maintenance**
  
- > **Check 1Line EBB for latest updates**
  - If a nominatable location will be impacted:
    - The 1Line Location ID is listed on posted Maintenance Schedule (“N/A” if not)
    - A separate 1Line individual posting is sent out prior to start of work
      - The posting number will be referenced in the Anticipated Impact column of the Maintenance Schedule

# Pipeline Inspection

- > **Pipeline pigging for cleaning purposes and to check for anomalies**
  - Corrosion
  - Coating Damage
  - Dents
  - Cracks (EMAT)
- > **Anticipated impacts**
  - Controlled flow during tool runs
  - Minimal impact during tool passage



# Pipeline Inspection

## > 2019 Job Examples with Meters Listed

Job Number	Location	Zone	Maintenance Activity	Anticipated Impact	Meter No.	Meter Name	1Line Nominatable Location ID
11	N Markham Lateral B (Station 24 to Station 30)	1	Pipeline Inspection	Refer to 1Line Notice ID 10007544; Meter outage	4466, 4473, 3606, 4606	Wharton El Campo - Tennessee, Wharton-DOW, Tres Mat WD Tres Mat Inj	1007177, 1009506, 9004062
89	Mainline D (Station 100 to Station 110)	4	Pipeline Inspection	Minimal impact during tool passage	7373	Sylacauga	N/A
208	Oreland A Lateral (P445 to Oreland Ashmead Extension P449)	6	Pipeline Inspection	Controlled flow needed during pipeline inspection	6045	Ashmead Road	N/A
241	Long Island Extension Lateral (J171 to Y36)	6	Pipeline Inspection	Controlled flow needed during pipeline inspection and minimal impact during tool passage	6263, 6095, 6028, 6062	Piles Creek, Grasmere, Richmond Narrows, Narrows	N/A

# Anomaly Investigation

## > What is an anomaly dig?

- A pipeline excavation for means of direct assessment and repairs or replacement if necessary.

## > What prompts anomaly digs?

- Data received from smart pigs shows an irregularity in wall thickness that warrants examination.

## > Types of digs

- Immediate dig – If smart pig data shows severe wall loss, we will immediately reduce line pressure in that segment and perform anomaly dig. There will be limited advanced notice.
- Scheduled dig – the smart pig data shows potential wall loss, but not to an extent that pipeline integrity is compromised. The anomaly dig may be scheduled during a low-load season where impacts to flow are minimized.

# Anomaly Investigation

## > Anomaly dig progression on maintenance schedule

- Anomaly investigation placeholder
- Anomaly investigation
- Anomaly cutout

## > Anticipated impacts

- Possible line outage
  - Single tap meter
  - Meter on a single line
- Meter outage
  - Reduced pressure dig
  - Anomaly cutout

# Anomaly Investigation

## > 2019 Job Examples with Meters Listed

Job Number	Location	Zone	Maintenance Activity	Anticipated Impact	Meter No.	Meter Name	1Line Nominatable Location ID
8	McMullen Lat "A" (T818 to TM520)	1	Anomaly Investigation Placeholder	Possible line outage	3607, 4607, 3641, 1724, 3559, 3545	Tres Palacios Wharton Withdrawal, Tres Palacios Wharton Injection, Glen Flora, Koonce #1, Katy-Atmos, White Oak Bayou	N/A
49	Mainline C (70C30 to 70C40)	4	Anomaly Investigation	Refer to 1Line Notice ID 10010772; Meter outage	3544	Centerville Dome	1001532
59	Mainline D (70D40 to Station 80)	4	Anomaly Investigation	Possible line outage	3595	Hoy Road	N/A
406	Delaware Power & Light Lateral (P163 to P171)	6	Anomaly Cutout	Meter Outage	6182, 6180, 6195	Kennett Square, Hockessin, E Hockessin	N/A



# Pipe Replacement

## > What situation might lead to a pipe replacement?

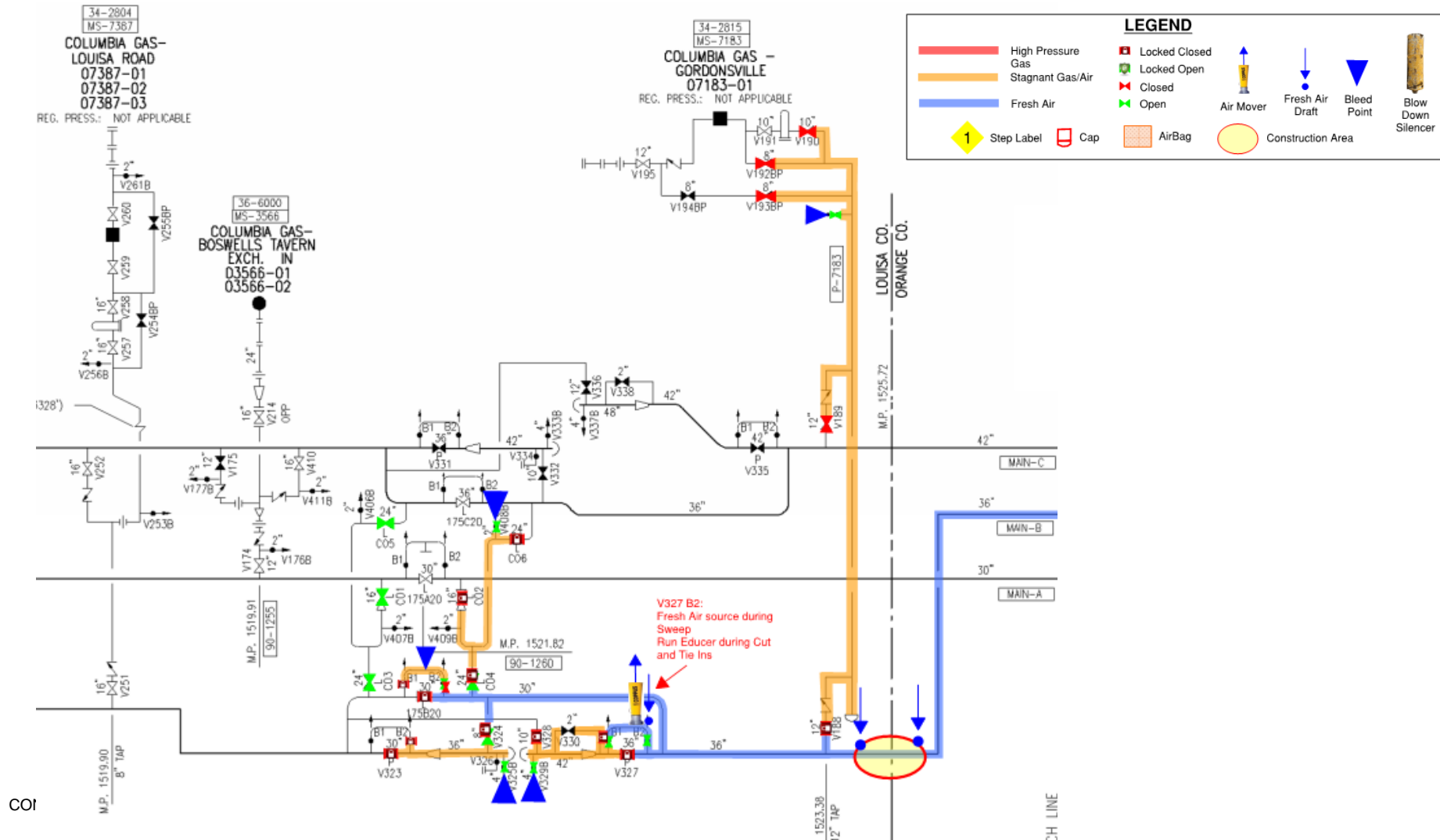
- Anomaly or physical damage.
- DOT class location change.
- Increased line pressure through a section.

## > Anticipated impacts

- Meter outage
  - Single tap meter
  - Multi-tap meter in close proximity to pipe being replaced



# Pipe Replacement



# Pipe Replacement

## > 2019 Job Example with Meters Listed

Job Number	Location	Zone	Maintenance Activity	Anticipated Impact	Meter No.	Meter Name	1Line Nominatable Location ID
362	N Markham Lateral B (Station 30 to TCB10)	1	Pipe replacement	Refer to 1Line Notice ID 9879044; Meter outage	4473	Wharton-DOW	1009506

# Hydrotest

## > Hydrotesting is required for:

- New pipeline segments
- DOT class location change
- Integrity Management Plan (as opposed to pipeline inspection)

## > Anticipated impacts

- Meter outage
  - Duration of hydrotest
  - 1-2 days at beginning and end
    - Multi-tap within section being tested



# Hydrotest

## > 2019 Job Examples with Meters Listed

Job Number	Location	Zone	Maintenance Activity	Anticipated Impact	Meter No.	Meter Name	1Line Nominatable Location ID
55	Mainline D (70D30 to Station 80)	4	Hydrotest	Meter outage	3466, 3467, 3595	Collins East, Sun Speed #1, Hoy Road	1000387, 1000085, 9003702
80	Mobile Bay Lat (AS84/AS81 to AS21)	4	Hydrotest	Refer to 1Line Notice ID 9971618; All deliveries on the Mobile Bay Lateral must be sourced from receipt locations on the lateral			
155	Mainline C (160C10 to Station 165)	5	Hydrotest	Possible impact to the availability of non-primary firm services scheduled north to south on the mainline			

# Facility Modification

## > Reverse flow modifications

- Trap and valve replacements
- Station reversals

## > Interconnects

- Tie-ins
- Removals
- Bi-directional flow

## > Anticipated Impacts

- Meter outage
- Station outage
- Possible pressure reduction



# Facility Modification

## > 2019 Job Examples with Meters Listed

Job Number	Location	Zone	Maintenance Activity	Anticipated Impact	Meter No.	Meter Name	1Line Nominatable Location ID
389	Station 62	3	Facility Modification	Refer to 1Line Notice ID 10009857; Transco will not be able to accept injected condensate from the listed locations	2504, 2823, 2789, 2914, 2539, 2830	SMI 66, SMI 76, EI 57, SMI 50, SS 269, SS 354	N/A
327	SE Louisiana Lat "E" (Lake Decade to Station 62)	3	Facility Modification	Refer to 1Line Notice ID 9615215; Meter outage	2813, 3291, 4565	Lake Hatch, Lake Hatch BB	1006708, 1000569, 1004721
50	Mainline B (65B20 to 70B30)	4	Facility Modification	Possible impact to the availability of non-primary firm services scheduled south to north on the mainline			
74	Mainline E (Station 84 to 84E20)	4	Facility Modification	Refer to 1Line Notice ID 9615091; Limited meter capacity 4/1-4/19	3601	Scott Mountain	9003962
182	Mainline D (185D0 to Potomac River)	5	Facility Modification	Refer to 1Line Notice ID 9392258; Possible impact to the availability of non-primary firm services scheduled north to south on the mainline	3654	Chantilly	9010338



# Facility Maintenance

- > Annual operations planned maintenance
- > Non-project related station modifications
- > Anticipated impact
  - Station outages over 24hrs





# Facility Maintenance

## > 2019 Job Examples with Meters Listed

Job Number	Location	Zone	Maintenance Activity	Anticipated Impact	Meter No.	Meter Name	1Line Nominatable Location ID
301	Station 95	4	Facility Maintenance	Station 95 outage			
402	Station 116	4	Facility Maintenance	Station 116 outage; Coordinated flow with affected locations during maintenance	7415, 7414, 7416	Lucas Road, Murray, Smith Looper	N/A
405	Station 160	5	Facility Maintenance	Station 160 outage; Possible impact to the availability of non-primary firm services scheduled north to south on the mainline			

# Highlighted 2020 Outages

## > Southeastern Trail (SET)

Job Number	Location	Zone	Start	Days	Finish	Maintenance Activity	Anticipated Impact	Meter No Impacted	Meter Name	1Line Location ID
69	Station 115	4	4/29/2020	71	7/8/2020	Facility Modification	Station 115 outage; Possible impact to the availability of non-primary firm services scheduled south to north on the mainline			
70	Station 116	4	10/5/2020	15	10/19/2020	Facility Modification	Station 116 outage; Coordinated flow with affected locations during maintenance	7415, 7414, 7416	Lucas Road, Murray, Smith Looper	N/A
84	Station 130	4	8/4/2020	71	10/13/2020	Facility Modification	Station 130 outage; Possible impact to the availability of non-primary firm services scheduled south to north on the mainline			
93	Mainline A (135A20 to 140A10)	5	7/5/2020	14	7/18/2020	Facility Modification	Meter Outage	7142, 7251	Startex, Moore	N/A

# Highlighted 2020 Outages

## > Southeastern Trail (SET)

Job Number	Location	Zone	Start	Days	Finish	Maintenance Activity	Anticipated Impact	Meter No Impacted	Meter Name	1Line Location ID
112	Station 165	5	3/30/2020	253	12/7/2020	Facility Modification	Station 165 horsepower reduction; Possible impact to the availability of transportation services scheduled north to south on the mainline			
113	Station 165	5	4/11/2020	15	4/25/2020	Facility Modification	Station 165 Outage; Possible impact to the availability of transportation services scheduled north to south on the mainline			
114	Station 165	5	10/26/2020	43	12/7/2020	Facility Modification	Station 165 Outage; Possible impact to the availability of transportation services scheduled north to south on the mainline			

# Highlighted 2020 Outages

## > Southeastern Trail (SET)

Job Number	Location	Zone	Start	Days	Finish	Maintenance Activity	Anticipated Impact	Meter No Impacted	Meter Name	1Line Location ID
128	Mainline "C" (180C10 to 180C15)	5	3/16/2020	13	3/28/2020	Facility Modification	Meter Outage; Possible impact to the availability of non-primary firm services scheduled north to south on the mainline	7348	Remington	N/A
129	Mainline "C" (180C10 to 180C20)	5	8/3/2020	6	8/8/2020	Facility Modification	Possible impact to the availability of non-primary firm services scheduled north to south on the mainline			
130	Mainline "C" (180C15 to 185C00)	5	3/16/2020	24	4/8/2020	Facility Modification	Possible impact to the availability of non-primary firm services scheduled north to south on the mainline			

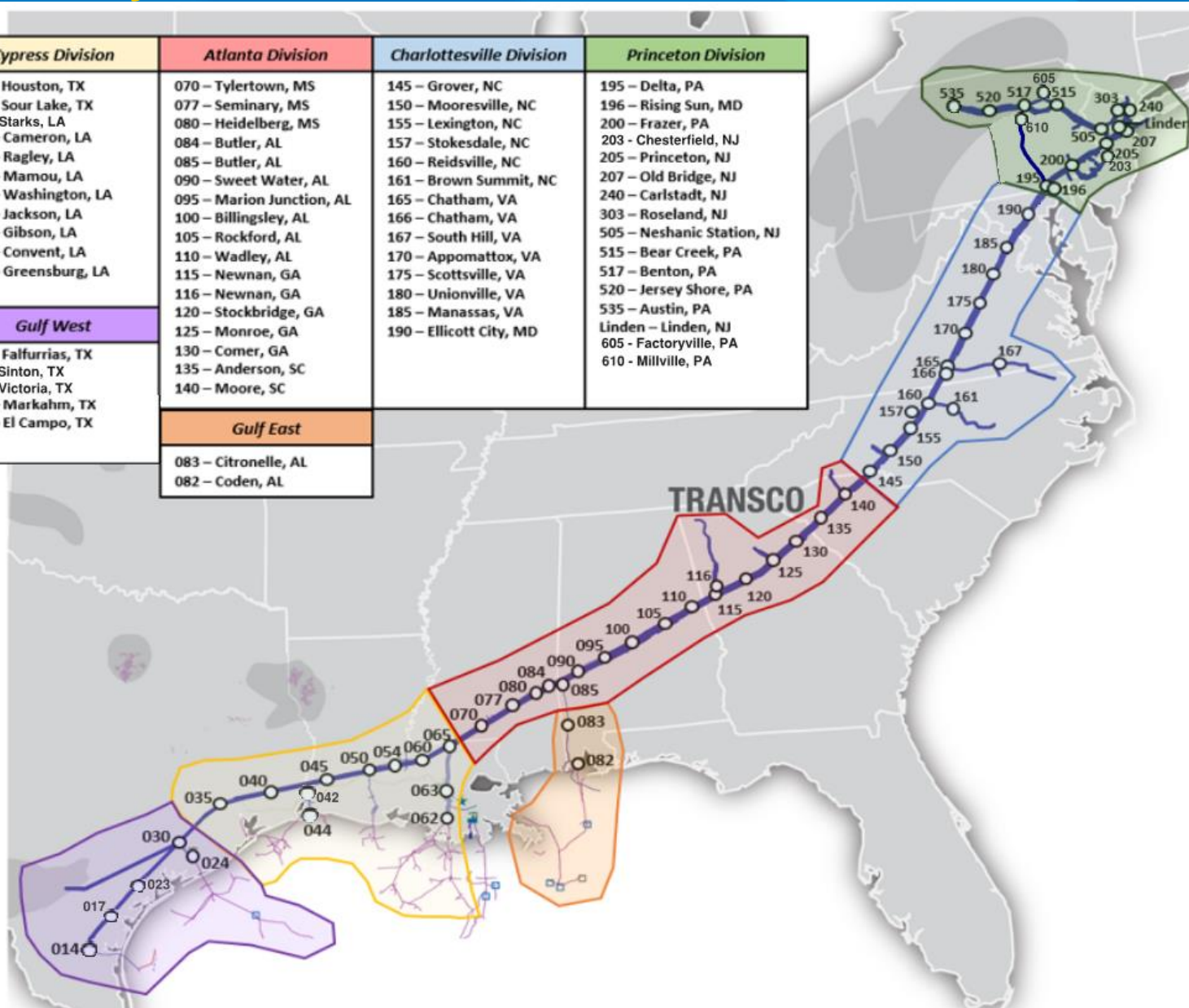
## Highlighted 2020 Outages

### > Northeast Supply Enhancement (NESE)

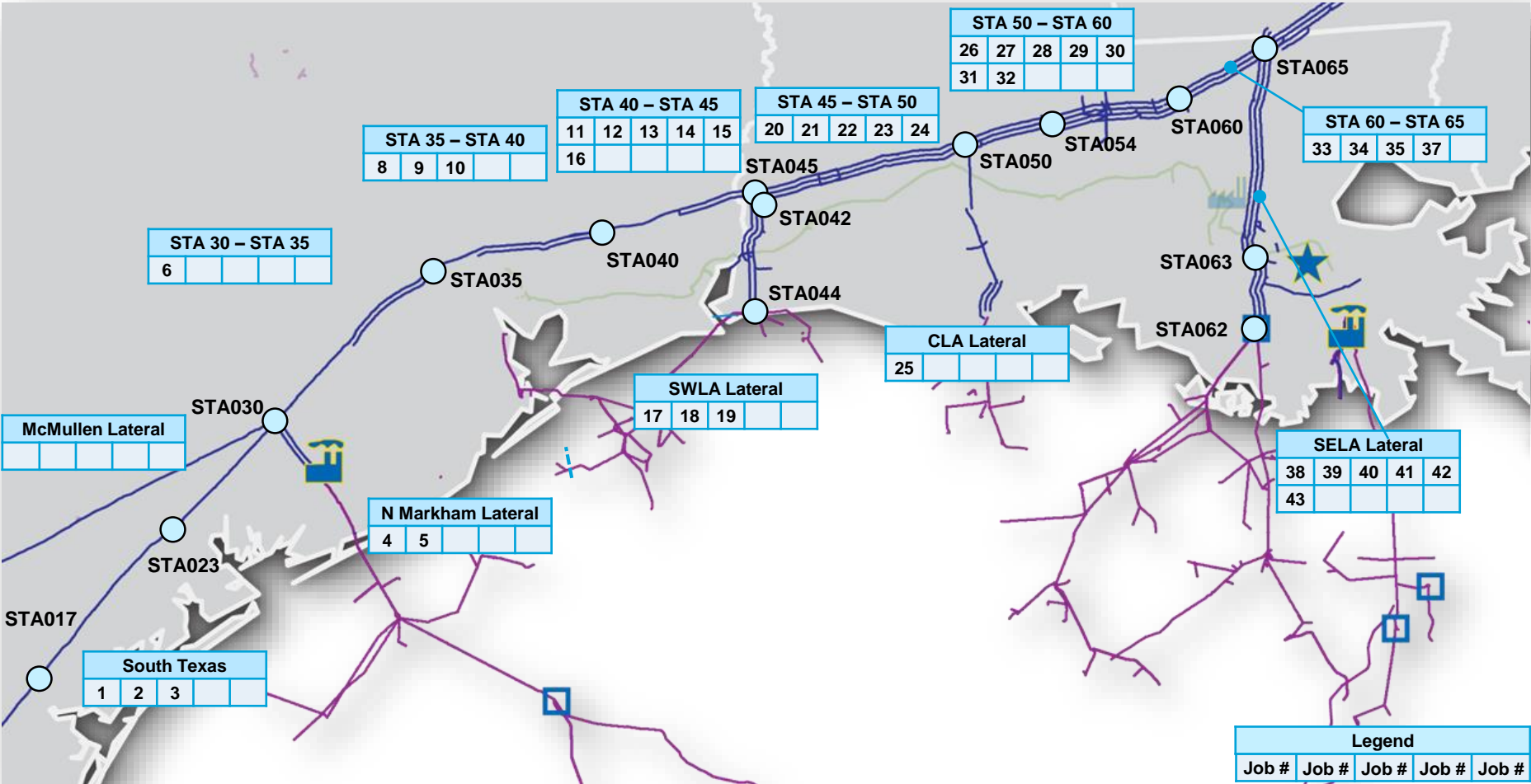
Job Number	Location	Zone	Start	Days	Finish	Maintenance Activity	Anticipated Impact	Meter No Impacted	Meter Name	1Line Location ID
188	Rockaway Lateral (Y114 to Y73)	6	8/3/2020	4	8/6/2020	Facility Modification	Meter outage	6334	Floyd Bennett	N/A
189	Lower Bay Loop C (200C56 to 200C60)	6	8/3/2020	15	8/17/2020	Facility Modification	Meter outage	6278, 6334, 6210	Morgan, Floyd Bennett, Long Beach	N/A

# Transco System Overview

Cypress Division	Atlanta Division	Charlottesville Division	Princeton Division
035 – Houston, TX 040 – Sour Lake, TX 042 – Starks, LA 044 – Cameron, LA 045 – Ragley, LA 050 – Mamou, LA 054 – Washington, LA 060 – Jackson, LA 062 – Gibson, LA 063 – Convent, LA 065 – Greensburg, LA	070 – Tylertown, MS 077 – Seminary, MS 080 – Heidelberg, MS 084 – Butler, AL 085 – Butler, AL 090 – Sweet Water, AL 095 – Marion Junction, AL 100 – Billingsley, AL 105 – Rockford, AL 110 – Wadley, AL 115 – Newnan, GA 116 – Newnan, GA 120 – Stockbridge, GA 125 – Monroe, GA 130 – Comer, GA 135 – Anderson, SC 140 – Moore, SC	145 – Grover, NC 150 – Mooresville, NC 155 – Lexington, NC 157 – Stokesdale, NC 160 – Reidsville, NC 161 – Brown Summit, NC 165 – Chatham, VA 166 – Chatham, VA 167 – South Hill, VA 170 – Appomattox, VA 175 – Scottsville, VA 180 – Unionville, VA 185 – Manassas, VA 190 – Ellicott City, MD	195 – Delta, PA 196 – Rising Sun, MD 200 – Frazer, PA 203 – Chesterfield, NJ 205 – Princeton, NJ 207 – Old Bridge, NJ 240 – Carlstadt, NJ 303 – Roseland, NJ 505 – Neshanic Station, NJ 515 – Bear Creek, PA 517 – Benton, PA 520 – Jersey Shore, PA 535 – Austin, PA Linden – Linden, NJ 605 – Factoryville, PA 610 – Millville, PA
Gulf West	Gulf East		
014 – Falfurrias, TX 017 – Sinton, TX 023 – Victoria, TX 024 – Markahm, TX 030 – El Campo, TX	083 – Citronelle, AL 082 – Coden, AL		



# Texas & Louisiana Construction & Maintenance



# Texas & Louisiana Construction & Maintenance



Job Number	Status	Start	Days	Finish	Location	Zone	Maintenance Activity	Anticipated Impact	Meter No.	Meter Name	1Line Nominatable Location ID
1		1/1/2020	365d	12/31/2020	Mainline A (10A60 to Agua Dulce M&R)	1	Facility Modification	Refer to 1Line Notice ID 9377690; Meter Outage	1695, 1659, 1760, 1707, 1637	Risken #5, Kennedy Ranch #3, John Kennedy #1, Wright #3, King Ranch	9000083, 1003019, 9004622, 9000900, 1008773
2		3/20/2020	27d	4/15/2020	Mainline A (17A0 to 20A5)	1	Anomaly Investigation Placeholder	Possible line outage	4669	Sinton	N/A
3		4/15/2020	21d	5/5/2020	Mainline A (20A5 to 20A48)	1	Anomaly Investigation Placeholder	Possible line outage	4669, 4400, 3648, 1767	Sinton, Victoria Invista, Sherrill Road, Pratkan #1	N/A
4		3/17/2020	9d	3/25/2020	N. Markham Lateral A (Station 24 to Station 30)	1	Pipeline Inspection	Controlled flow needed during tool run and minimal impact during tool passage	1709, 4585, 4582, 4407, 4452	Glaze #1, Poole Road, Markham SW #1, Markham Channel, Markham Valero	N/A
5		5/5/2020	16d	5/20/2020	N. Markham Lat B (TCA20 to TC1001)	1	Anomaly Investigation Placeholder	Possible line outage	3606, 4606, 4473, 4582, 4407, 4452	Tres Palacios Matagorda Withdrawal, Tres Palacios Matagorda Injection, Wharton-DOW, Markham SW #1, Markham Channel, Markham Valero	N/A
6		4/14/2020	18d	5/1/2020	Mainline A (Station 30 to Station 35)	2	Pipeline Inspection	Controlled flow needed during tool run and minimal impact during tool passage	4669, 3607, 4607, 3641, 3667, 4667, 1724, 4653, 3559, 3545	Sinton, Tres Palacios Wharton Withdrawal, Tres Palacios Wharton Injection, Glen Flora, Spanish Camp Exchange In, Spanish Camp Exchange Out, Koonce #1, Cross Creek Ranch, Katy Atmos, White Oak Bayou	N/A
7		6/2/2020	18d	6/19/2020	Mainline A (Station 35 to Station 40)	2	Pipeline Inspection	Controlled flow needed during tool run and minimal impact during tool passage	4669, 1628, 3249, 4359, 1626, 1715	Sinton, North Milton, Bammel Exchange In, Bammel Exchange Out, Cross Creek, Humphrey's #1	N/A
8		5/20/2020	13d	6/1/2020	Mainline A (35-15 Site)	2	Anomaly Investigation Placeholder	No meter impact anticipated at this time			
9		5/14/2020	9d	5/22/2020	Mainline A (35A40 to 40A1)	2	Facility Modification	Meter outage	1715	Humphreys #1	9001660
10		7/7/2020	18d	7/24/2020	Mainline A (Station 40 to Station 45)	2	Pipeline Inspection	Controlled flow needed during tool run and minimal impact during tool passage	4669, 1638, 1765, 1738	Sinton, Fee Sour Lake #1, Village Creek, Texoma	N/A
11	Dates to be Determined	March 2020	2d	March 2020	Mainline A (Station 40 to Station 45)	2	Pipeline Inspection	Coordinated flow with affected locations during maintenance and minimal impact during tool passage	1765, 1738	Village Creek, Texoma	N/A
12	Dates to be Determined	March 2020	3d	March 2020	Mainline B (Station 40 to Station 45)	2	Pipeline Inspection	Coordinated flow with affected locations during maintenance			
13	Dates to be Determined				Mainline C (Station 40 to Station 45)	2	Pipeline Inspection	Coordinated flow with affected locations during maintenance			



# Texas & Louisiana Construction & Maintenance



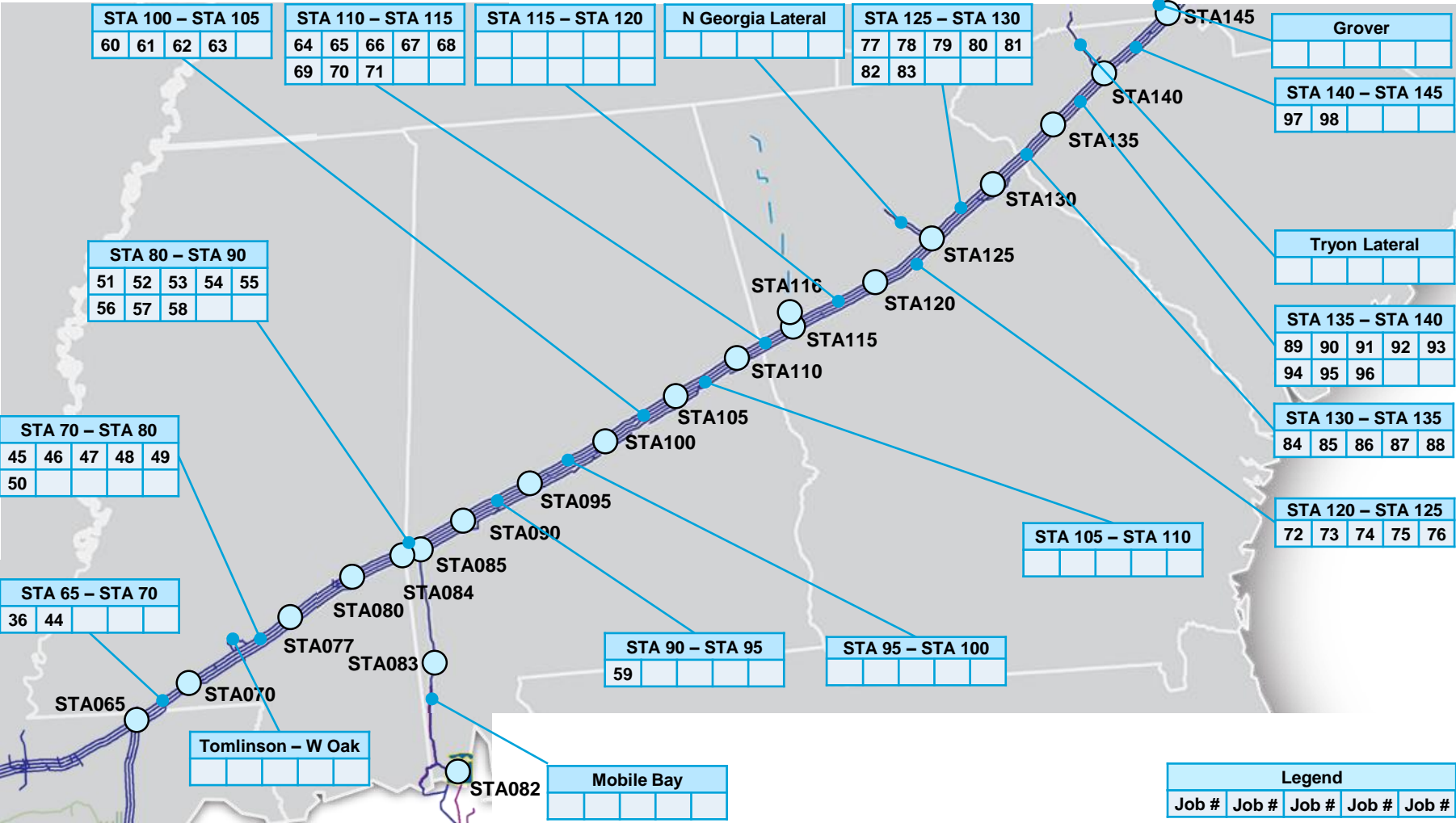
Job Number	Status	Start	Days	Finish	Location	Zone	Maintenance Activity	Anticipated Impact	Meter No.	Meter Name	1Line Nominatable Location ID
14		5/29/2020	14d	6/11/2020	Mainline A (40A30 to 45A0)	2	Facility Modification	No meter impact anticipated at this time			
15		6/26/2020	14d	7/9/2020	Mainline A (LW546 to 45A0)	2	Facility Modification	No meter impact anticipated at this time			
16		11/10/2020	9d	11/18/2020	Mainline C (LW811 to Station 45)	2	Pipeline Inspection	Controlled flow needed during tool run and minimal impact during tool passage	4662, 4449	Lighthouse Road, Sabine Gillis	N/A
17		3/18/2020	10d	3/27/2020	Stations 42/44	2	Facility Maintenance	Coordinated flow with affected location during maintenance	4662	Lighthouse Road	N/A
18	Dates to be Determined	October 2020	12hr	October 2020	Stations 42/44	2	Facility Maintenance	Coordinated flow with affected location during maintenance	4662	Lighthouse Road	N/A
19	Dates to be Determined				36" SWLA Lateral (Station 42 to Station 44)	2	Pipeline Inspection	Coordinated flow with affected location during maintenance	4662	Lighthouse Road	N/A
20	Dates to be Determined	August 2020	12hr	August 2020	Station 45	3	Facility Maintenance	Coordinated flow with affected location during maintenance	4662	Lighthouse Road	N/A
21		6/1/2020	6d	6/6/2020	Mainline C (45C10 to 45C20)	3	Facility Modification	No meter impact anticipated at this time			
22		8/4/2020	17d	8/20/2020	Mainline A (Station 45 to Atchafalaya River)	3	Pipeline Inspection	Minimal impact during tool passage	4314, 3227, 2652, 2839	Eunice Exchange Out, Eunice Exchange In, Elba #1, Chesapeake	N/A
23	Dates to be Determined	February 2020	3d	February 2020	Mainline B (Station 45 to Station 50)	3	Pipeline Inspection	Coordinated flow with affected locations during maintenance and minimal impact during tool passage	2856	Duralde	N/A
24	Dates to be Determined	January 2020	3d	January 2020	Mainline C (Station 45 to Station 50)	3	Pipeline Inspection	Coordinated flow with affected locations during maintenance			
25		2/11/2020	9d	2/19/2020	Central Louisiana Lateral A (Egan Junction to Station 50)	3	Pipeline Inspection	Controlled flow needed during tool run and minimal impact during tool passage	2909, 4599, 3599	Pamela Berzas, Kaplan Plant In, Kaplan Plant Out	N/A
26	Dates to be Determined				Station 54	3	Facility Modification	Station 54 outage			
27		6/20/2020	14d	7/3/2020	Mainline A (50A20 to 50A40)	3	Facility Modification	Meter outage	2652, 2839	Elba #1, Chesapeake Elba	1001379, 1001894
28		3/17/2020	16d	4/1/2020	Mainline A (Atchafalaya River to Mississippi River)	3	Pipeline Inspection	Minimal impact during tool passage	3506	Morganza	N/A
29		1/14/2020	9d	1/22/2020	Mainline B (Atchafalaya River to Mississippi River)	3	Pipeline Inspection	No meter impact anticipated at this time			
30		1/28/2020	9d	2/5/2020	Mainline C (Atchafalaya River to Mississippi River)	3	Pipeline Inspection	No meter impact anticipated at this time			
31		7/26/2020	15d	8/9/2020	Mainline A (50A30 to 50A60)	3	Facility Modification	No meter impact anticipated at this time			
32		8/25/2020	15d	9/9/2020	Mainline A (50A50 to LE282)	3	Facility Modification	No meter impact anticipated at this time			
33		7/28/2020	9d	8/5/2020	Port Hudson MCVEA Lateral (Station 60 to LE5006)	3	Pipeline Inspection	Controlled flow needed during tool run	4534	Zachary	N/A
34		5/5/2020	16d	5/20/2020	Mainline A (Mississippi River to Amite River)	3	Pipeline Inspection	No meter impact anticipated at this time			
35		1/28/2020	18d	2/14/2020	Mainline A (Amite River to Station 70)	3	Pipeline Inspection	Minimal impact during tool passage	4483, 4150	McComb, Gulf South Magnolia	N/A
37		9/15/2020	7d	9/21/2020	Mainline B (60B20 to 65B10)	3	Facility Modification	No meter impact anticipated at this time			

# Texas & Louisiana Construction & Maintenance



Job Number	Status	Start	Days	Finish	Location	Zone	Maintenance Activity	Anticipated Impact	Meter No.	Meter Name	1Line Nominatable Location ID
38		7/1/2020	18d	7/18/2020	SE Louisiana Lat A (62A12 to 62A31)	3	Anomaly Investigation Placeholder	Possible line outage	3328, 4362, 3590	St. James Exchange In, St. James Exchange Out, Larose	N/A
39		6/2/2020	14d	6/15/2020	SE Louisiana Lat B (62B0 to 63B0)	3	Anomaly Investigation Placeholder	Possible line outage	4509, 3592, 3533	Terrebonne Out, Terrebonne In, Thibodeaux	N/A
40		7/20/2020	22d	8/10/2020	SE Louisiana Lat A (62A0-2 to 62A11)	3	Anomaly Investigation Placeholder	No meter impact anticipated at this time			
41		6/15/2020	17d	7/1/2020	SE Louisiana Lat C (62C0 to 63C0)	3	Anomaly Investigation Placeholder	No meter impact anticipated at this time			
42		2/25/2020	9d	3/4/2020	SE Louisiana Lateral C (Mosquito Bay to Station 62)	3	Pipeline Inspection	No meter impact anticipated at this time			
43		9/23/2020	16d	10/8/2020	SE Louisiana Lat E 30" (LE1270 to LE1260)	3	Facility Modification	Meter outage	3291, 4565, 2813	Lake Hatch, Lake Hatch BB	1000569, 1004721

# Mississippi, Alabama, Georgia, & South Carolina Construction & Maintenance



# Mississippi, Alabama, Georgia, & South Carolina Construction & Maintenance



Job Number	Status	Start	Days	Finish	Location	Zone	Maintenance Activity	Anticipated Impact	Meter No.	Meter Name	1Line Nominatable Location ID
36		7/13/2020	43d	8/24/2020	Mainline A (LE344 to 70A0)	3	Facility Modification	Meter outage	4483, 4150	McComb, Gulf South Magnolia	1002726, 1006175
44		4/28/2020	76d	7/12/2020	Station 65	4	Facility Modification	Station 65 outage			
45		10/1/2020	34d	11/3/2020	Mainline D (70D2 to 70D30)	4	Facility Modification	Meter outage	3238, 3650, 3466, 3467, 3595	Seminary, Ridge Road, Collins East, Sun Speed #1, Hoy Road	9002520, 9007562, 1000387, 1000085, 9003702
46		2/4/2020	11d	2/14/2020	Mainline A (Station 70 to Station 80)	4	Pipeline Inspection	Minimal impact during tool passage	3000	Sharon	N/A
47		9/15/2020	18d	10/2/2020	Mainline D (Station 70 to Station 80)	4	Pipeline Inspection	No meter impact anticipated at this time			
48		5/14/2020	21d	6/3/2020	Mainline B (70B0 to 80B0)	4	Anomaly Investigation Placeholder	No meter impact anticipated at this time			
49		9/1/2020	30d	9/30/2020	Mainline D (70D20 to 80D10)	4	Facility Modification	Meter outage	3238, 3650, 3466, 3467, 3595	Seminary, Ridge Road, Collins East, Sun Speed #1, Hoy Road	9002520, 9007562, 1000387, 1000085, 9003702
50		8/20/2020	22d	9/10/2020	Station 77	4	Facility Modification	Station 77 outage			
51		2/18/2020	11d	2/28/2020	Mainline B (Station 80 to 84B21)	4	Pipeline Inspection	No meter impact anticipated at this time			
52		6/4/2020	19d	6/22/2020	Mainline A (80A0 to 90A0)	4	Anomaly Investigation Placeholder	No meter impact anticipated at this time			
53		6/23/2020	24d	7/16/2020	Mainline A (80A0 to 90A0)	4	Anomaly Investigation Placeholder	No meter impact anticipated at this time			
54		7/17/2020	9d	7/25/2020	Mainline D (80D0 to 100D0)	4	Anomaly Investigation Placeholder	Possible line outage	7406, 7332	Chickasawhay, International Paper	N/A
55		2/25/2020	18d	3/13/2020	Station 83	4	Facility Modification	Possible Station 83 outage			
56		7/27/2020	11d	8/6/2020	Mainline B (84C10 to 90C0)	4	Anomaly Investigation Placeholder	No meter impact anticipated at this time			
57		8/7/2020	8d	8/14/2020	Mainline D (84D10 to 90D0)	4	Anomaly Investigation Placeholder	No meter impact anticipated at this time			
58		3/24/2020	11d	4/3/2020	Mainline B (84B21 to Station 90)	4	Pipeline Inspection	No meter impact anticipated at this time			
59		8/15/2020	11d	8/25/2020	Mainline A (90A0 to 100A0)	4	Anomaly Investigation Placeholder	No meter impact anticipated at this time			
60		5/4/2020	40d	6/12/2020	Station 100	4	Facility Modification	Station 100 outage			
61		4/8/2020	17d	4/24/2020	Mainline A (100A0 to Coosa River)	4	Anomaly Investigation Placeholder	No meter impact anticipated at this time			

# Mississippi, Alabama, Georgia, & South Carolina Construction & Maintenance



Job Number	Status	Start	Days	Finish	Location	Zone	Maintenance Activity	Anticipated Impact	Meter No.	Meter Name	1Line Nominatable Location ID
62		3/11/2020	28d	4/7/2020	Mainline D (100D0 to 110D0)	4	Anomaly Investigation Placeholder	Possible line outage	7373	Sylacauga	N/A
63		4/25/2020	19d	5/13/2020	Mainline A (Coosa River to 110A0)	4	Anomaly Investigation Placeholder	No meter impact anticipated at this time			
64		8/26/2020	29d	9/23/2020	Mainline A (110A0 to 120A0)	4	Anomaly Investigation Placeholder	No meter impact anticipated at this time			
65		4/30/2020	14d	5/13/2020	Mainline D (110D20 to 115D10)	4	Facility Modification	No meter impact anticipated at this time			
66		5/14/2020	14d	5/27/2020	Mainline C (110C20 to 115C10)	4	Facility Modification	No meter impact anticipated at this time			
67		5/28/2020	13d	6/9/2020	Mainline B (110B20 to 115B10)	4	Facility Modification	No meter impact anticipated at this time			
68		6/10/2020	13d	6/22/2020	Mainline A (110A20 to 115A10)	4	Facility Modification	No meter impact anticipated at this time			
69		4/29/2020	71d	7/8/2020	Station 115	4	Facility Modification	Station 115 outage; Possible impact to the availability of non-primary firm services scheduled south to north on the mainline			
70		10/5/2020	15d	10/19/2020	Station 116	4	Facility Modification	Station 116 outage; Coordinated flow with affected locations during maintenance	7415, 7414, 7416	Lucas Road, Murray, Smith Looper	N/A
71		4/1/2020	24d	4/24/2020	Mainline D (115D20 to 120D10)	4	Facility Modification	No meter impact anticipated at this time			
72		9/28/2020	28d	10/25/2020	Station 120	4	Facility Modification	Station 120 outage			
73		9/24/2020	28d	10/21/2020	Mainline A (120A0 to 130A0)	4	Anomaly Investigation Placeholder	No meter impact anticipated at this time			
74		7/21/2020	18d	8/7/2020	Mainline D (Station 120 to Station 130)	4	Pipeline Inspection	Minimal impact during tool passage	7347	Monroe Power	N/A
75		7/18/2020	8d	7/25/2020	Mainline B (120B0 to 120B10)	5	Facility Modification	No meter impact anticipated at this time			
76		4/27/2020	53d	6/18/2020	Mainline D (120D5 to 125D20)	4	Facility Modification	Meter outage	7347	Monroe Power	1002592
77		9/1/2020	29d	9/29/2020	Station 125	4	Facility Modification	Station 125 outage			
78		6/20/2020	24d	7/13/2020	Mainline D (125D10 to 130D0)	4	Facility Modification	No meter impact anticipated at this time			
79		7/27/2020	8d	8/3/2020	Mainline B (125B20 to 130B0)	4	Facility Modification	No meter impact anticipated at this time			
80		9/14/2020	14d	9/27/2020	Mainline D (125D20 to 130D10)	4	Facility Modification	No meter impact anticipated at this time			

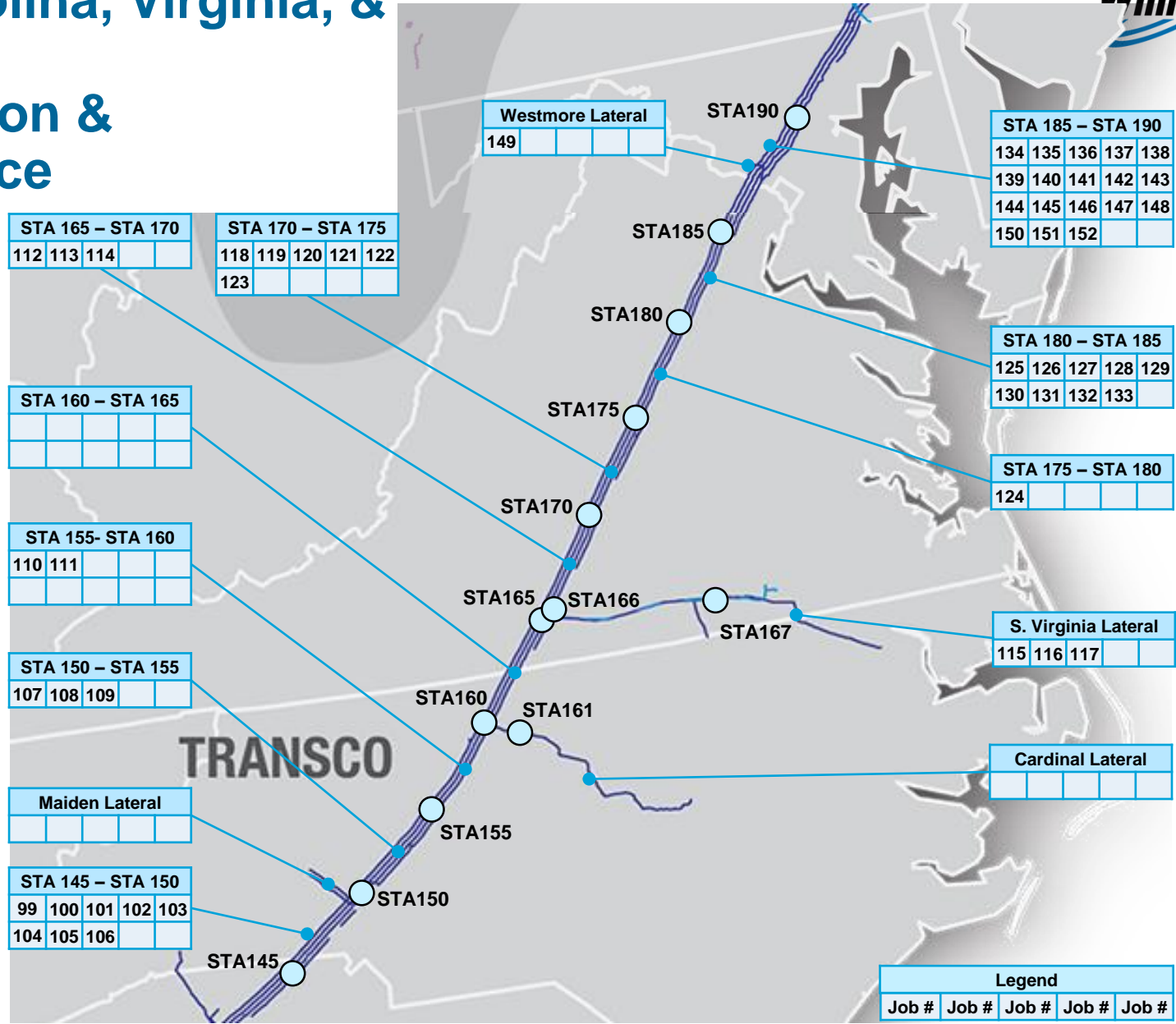
# Mississippi, Alabama, Georgia, & South Carolina Construction & Maintenance



Job Number	Status	Start	Days	Finish	Location	Zone	Maintenance Activity	Anticipated Impact	Meter No.	Meter Name	1Line Nominatable Location ID
81		8/31/2020	14d	9/13/2020	Mainline C (125C20 to 130C1)	4	Facility Modification	No meter impact anticipated at this time			
82		8/18/2020	13d	8/30/2020	Mainline B (125B20 to 130B1)	4	Facility Modification	No meter impact anticipated at this time			
83		8/5/2020	13d	8/17/2020	Mainline A (125A20 to 130A10)	4	Facility Modification	No meter impact anticipated at this time			
84		8/4/2020	71d	10/13/2020	Station 130	4	Facility Modification	Station 130 Outage; Possible impact to the availability of non-primary firm services scheduled south to north on the mainline			
85		10/31/2020	21d	11/20/2020	Mainline C (130C0 to 140C0)	4	Anomaly Investigation Placeholder	No meter impact anticipated at this time			
86		11/10/2020	11d	11/20/2020	Mainline A (Station 130 to Savannah River)	4	Pipeline Inspection	No meter impact anticipated at this time			
87		9/24/2020	28d	10/21/2020	Mainline A (130A0 to Savannah River)	4	Anomaly Investigation Placeholder	No meter impact anticipated at this time			
88		8/18/2020	18d	9/4/2020	Mainline A (Savannah River to Station 140)	5	Pipeline Inspection	No meter impact anticipated at this time			
89		10/12/2020	14d	10/25/2020	Station 135	5	Facility Modification	Station 135 outage			
90		11/30/2020	4d	12/3/2020	Mainline A (135A0 to 140A0)	5	Anomaly Investigation Placeholder	No meter impact anticipated at this time			
91		12/4/2020	6d	12/9/2020	Mainline C (135C0 to 140C0)	5	Anomaly Investigation Placeholder	No meter impact anticipated at this time			
92		12/10/2020	5d	12/14/2020	Mainline D (135D0 to 140D0)	5	Anomaly Investigation Placeholder	No meter impact anticipated at this time			
93		7/5/2020	14d	7/18/2020	Mainline A (135A20 to 140A10)	5	Facility Modification	Meter outage	7142, 7251	Startex, Moore	N/A
94		6/21/2020	14d	7/4/2020	Mainline B (135B20 to 140B1)	5	Facility Modification	No meter impact anticipated at this time			
95		6/8/2020	13d	6/20/2020	Mainline C (135C20 to 140C10)	5	Facility Modification	No meter impact anticipated at this time			
96		5/26/2020	13d	6/7/2020	Mainline D (135D20 to S116)	5	Facility Modification	No meter impact anticipated at this time			
97		5/25/2020	71d	8/3/2020	Station 140	5	Facility Modification	Station 140 outage			
98		10/20/2020	6d	10/25/2020	Mainline B (140B10 to 140B20)	5	Anomaly Investigation Placeholder	No meter impact anticipated at this time			

# North Carolina, Virginia, & Maryland

## Construction & Maintenance





# North Carolina, Virginia, & Maryland Construction & Maintenance



Job Number	Status	Start	Days	Finish	Location	Zone	Maintenance Activity	Anticipated Impact	Meter No.	Meter Name	1Line Nominatable Location ID
99		12/14/2020	6d	12/19/2020	Mainline A (145A0 to 150A0)	5	Anomaly Investigation Placeholder	No meter impact anticipated at this time			
100		9/9/2020	33d	10/11/2020	Mainline A (145A1 to 145A20)	5	Facility Modification	No meter impact anticipated at this time			
101		10/13/2020	18d	10/30/2020	Mainline A (Station 145 to Station 150)	5	Pipeline Inspection	No meter impact anticipated at this time			
102	Dates to be Determined				Mainline C (145C0 to 145C1)	5	Facility Modification	No meter impact anticipated at this time			
103	Dates to be Determined				Mainline B (145B2 to 145B10)	5	Facility Modification	No meter impact anticipated at this time			
104	Dates to be Determined				Mainline B (145B2 to 150B5)	5	Facility Modification	No meter impact anticipated at this time			
105		10/12/2020	79d	12/29/2020	Mainline A (145A20 to 150A0)	5	Facility Modification	No meter impact anticipated at this time			
106	Dates to be Determined				Mainline C (145C25 to 150C5)	5	Facility Modification	No meter impact anticipated at this time			
107		7/28/2020	11d	8/7/2020	Mainline B (Station 150 to MLV 155B2)	5	Pipeline Inspection	No meter impact anticipated at this time			
108		5/11/2020	9d	5/19/2020	Mainline B (150B0 to 155B2)	5	Anomaly Investigation Placeholder	No meter impact anticipated at this time			
109		4/8/2020	9d	4/16/2020	Mainline D (150D0 to 155D2)	5	Anomaly Investigation Placeholder	No meter impact anticipated at this time			
110		8/11/2020	9d	8/19/2020	Mainline B (155B2 to 160B10)	5	Pipeline Inspection	No meter impact anticipated at this time			
111		4/17/2020	9d	4/25/2020	Mainline B (155B2 to 160B10)	5	Anomaly Investigation Placeholder	No meter impact anticipated at this time			
112		3/30/2020	253d	12/7/2020	Station 165	5	Facility Modification	Station 165 horsepower reduction; Possible impact to the availability of transportation services scheduled north to south on the mainline			
113		4/11/2020	15d	4/25/2020	Station 165	5	Facility Modification	Station 165 Outage; Possible impact to the availability of transportation services scheduled north to south on the mainline			
114		10/26/2020	43d	12/7/2020	Station 165	5	Facility Modification	Station 165 Outage; Possible impact to the availability of transportation services scheduled north to south on the mainline			
115		3/30/2020	12d	4/10/2020	South Virginia Lat (VS151 to VS10)	5	Facility Modification	No meter impact anticipated at this time			
116		3/17/2020	11d	3/27/2020	S Virginia Lateral A (Station 165 to Station 167)	5	Pipeline Inspection	Controlled flow needed during tool run and minimal impact during tool passage	7249, 7253, 7365, 7266, 7264 7274	South Boston, Chase City, Wise Frontier, South Hill, Pleasant Hill, Ahoskie	N/A

# North Carolina, Virginia, & Maryland Construction & Maintenance



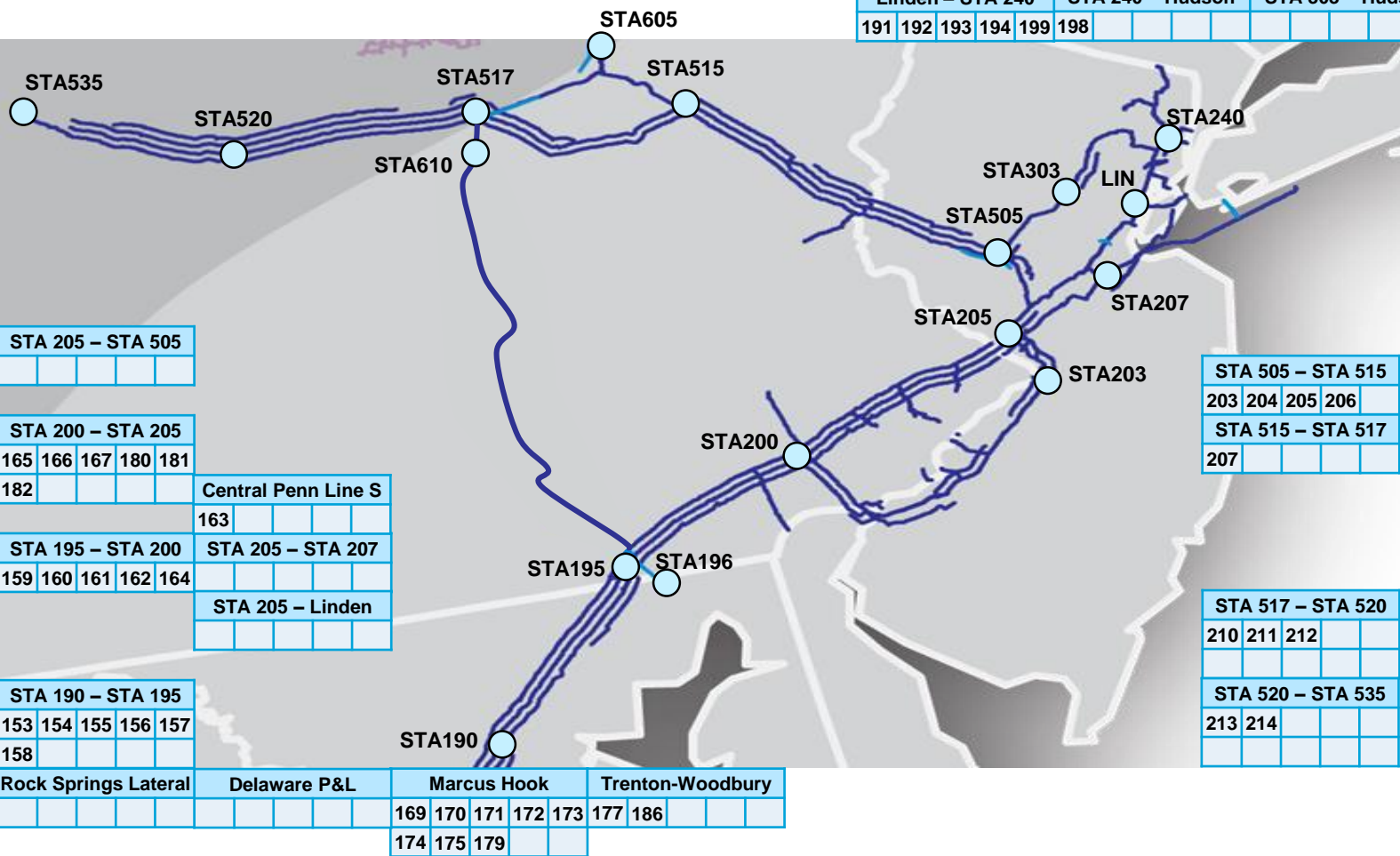
Job Number	Status	Start	Days	Finish	Location	Zone	Maintenance Activity	Anticipated Impact	Meter No.	Meter Name	1Line Nominatable Location ID
117		4/7/2020	11d	4/17/2020	S Virginia Lateral A (Station 167 to Ahoskie M&R)	5	Pipeline Inspection	Controlled flow needed during tool run and minimal impact during tool passage	7268, 3546, 7261, 7264, 7319, 7341, 7274	Commonwealth, Emporia In, Emporia Out, Pleasant Hill, Panda Energy, NC Nat Conway, Ahoskie	N/A
118		3/2/2020	13d	3/14/2020	Mainline D (170D10 to V485)	5	Facility Modification	No meter impact anticipated at this time			
119		3/16/2020	13d	3/28/2020	Mainline C (170C1 to JamesR7)	5	Facility Modification	No meter impact anticipated at this time			
120		3/30/2020	13d	4/11/2020	Mainline B (170B0 to JamesR5)	5	Facility Modification	No meter impact anticipated at this time			
121		4/13/2020	13d	4/25/2020	Mainline A (170A1 to 170A20)	5	Facility Modification	No meter impact anticipated at this time			
122		4/27/2020	9d	5/5/2020	Mainline B (170B0 to 175B20)	5	Anomaly Investigation Placeholder	No meter impact anticipated at this time			
123		8/25/2020	9d	9/2/2020	Mainline A (James River to Station 180)	5	Pipeline Inspection	No meter impact anticipated at this time			
124		9/14/2020	21d	10/4/2020	Station 175	5	Facility Modification	Station 175 outage			
125		10/20/2020	18d	11/6/2020	Mainline A (Station 180 to Station 185)	5	Pipeline Inspection	No meter impact anticipated at this time			
126		5/4/2020	24d	5/27/2020	Mainline A (180A1 to 180A5)	5	Facility Modification	No meter impact anticipated at this time			
127		12/28/2020	6d	1/2/2021	Mainline A (180A0 to 185A0)	5	Anomaly Investigation Placeholder	No meter impact anticipated at this time			
128		3/16/2020	13d	3/28/2020	Mainline C (180C10 to 180C15)	5	Facility Modification	Meter Outage; Possible impact to the availability of non-primary firm services scheduled north to south on the mainline	7348	Remington	N/A
129		8/3/2020	6d	8/8/2020	Mainline C (180C10 to 180C20)	5	Facility Modification	Possible impact to the availability of non-primary firm services scheduled north to south on the mainline			
130		3/16/2020	24d	4/8/2020	Mainline C (180C15 to 185C00)	5	Facility Modification	Possible impact to the availability of non-primary firm services scheduled north to south on the mainline			
131		4/9/2020	12d	4/20/2020	Mainline A (180A20 to 185A00)	5	Facility Modification	No meter impact anticipated at this time			
132		4/21/2020	11d	5/1/2020	Mainline B (180B20 to 185B00)	5	Facility Modification	No meter impact anticipated at this time			
133		4/15/2020	17d	5/1/2020	Mainline A (180A25 to 185A0)	5	Facility Modification	No meter impact anticipated at this time			
134		1/20/2020	29d	2/17/2020	Station 185	5	Facility Modification	Station 185 horsepower reduction			
135		9/1/2020	18d	9/18/2020	Mainline A (Station 185 to Potomac River)	5	Pipeline Inspection	No meter impact anticipated at this time			

# North Carolina, Virginia, & Maryland Construction & Maintenance



Job Number	Status	Start	Days	Finish	Location	Zone	Maintenance Activity	Anticipated Impact	Meter No.	Meter Name	1Line Nominatable Location ID
136		6/22/2020	47d	8/7/2020	Mainline A (185A1 to 185A14)	5	Facility Modification	No meter impact anticipated at this time			
137		6/22/2020	47d	8/7/2020	Mainline B (185B0 to 185B5)	5	Facility Modification	No meter impact anticipated at this time			
138		5/11/2020	9d	5/19/2020	Mainline A (185A0 to Potomac River)	5	Anomaly Investigation Placeholder	No meter impact anticipated at this time			
139		11/2/2020	6d	11/7/2020	Mainline A (185A0 to R1 / R3 Potomac)	5	Anomaly Investigation Placeholder	No meter impact anticipated at this time			
140		6/22/2020	47d	8/7/2020	Mainline B (V358 to 185B14)	6	Facility Modification	No meter impact anticipated at this time			
141		7/20/2020	6d	7/26/2020	Mainline B (V358 to 190A0)	6	Anomaly Investigation Placeholder	No meter impact anticipated at this time			
142		5/19/2020	18d	6/5/2020	Mainline B (V358 to Station 190)	6	Pipeline Inspection	No meter impact anticipated at this time			
143		6/1/2020	17d	6/17/2020	Mainline A (185A14 to R1/R3 Potomac)	6	Facility Modification	No meter impact anticipated at this time			
144		6/1/2020	9d	6/9/2020	Mainline A (Potomac River to 190A0)	6	Anomaly Investigation Placeholder	No meter impact anticipated at this time			
145		11/30/2020	6d	12/5/2020	Mainline A (R2 / R4 Potomac to 190A0)	6	Anomaly Investigation Placeholder	No meter impact anticipated at this time			
146		9/29/2020	18d	10/16/2020	Mainline A (Potomac River to Station 190)	6	Pipeline Inspection	No meter impact anticipated at this time			
147		3/5/2020	18d	3/22/2020	Mainline A (R2 & R4 @ Potomac to 185A20)	6	Facility Modification	No meter impact anticipated at this time			
148		8/31/2020	8d	9/7/2020	Mainline A (185B20 to 190B1)	6	Facility Modification	No meter impact anticipated at this time			
149		6/10/2020	6d	6/16/2020	Westmore Lateral (MD-124 to MD-129)	6	Anomaly Investigation Placeholder	Possible line outage	7382, 7383, 7384	Westmore Rd #14, Westmore Rd #13, Westmore Rd #12	N/A
150		1/29/2020	18d	2/15/2020	Mainline A (185A20 to 190A1)	6	Facility Modification	No meter impact anticipated at this time			
151		2/20/2020	11d	3/1/2020	Mainline B (185B20 to 190B1)	6	Facility Modification	No meter impact anticipated at this time			
152		1/25/2021	21d	2/14/2021	Mainline A (MD157 to 190A5)	6	Facility Modification	No meter impact anticipated at this time			

# Pennsylvania & New Jersey Construction & Maintenance



Bayonne Lateral				
195				
N New Jersey Lateral				
Essex Lateral				
West End Lateral				
196				
Sewaren Lateral				
Long Island Ext				
Lower Bay Loop C				
187	188	189	190	
Oreland Lateral				
183	184			
Trenton Lateral				
Harrison Lateral				
197				
Paterson Lateral				
Manhattan				
200				
Pottstown Lateral				
168				
Camden Lateral				
176				
Fairless Lateral				
185				
PGW Plant Lat				
178				

# Pennsylvania & New Jersey Construction & Maintenance



Job Number	Status	Start	Days	Finish	Location	Zone	Maintenance Activity	Anticipated Impact	Meter No.	Meter Name	1Line Nominatable Location ID
153		1/29/2020	9d	2/6/2020	Station 190	6	Facility Modification	Station 190 outage			
154		1/25/2021	11d	2/4/2021	Station 190	6	Facility Modification	Station 190 outage			
155		6/23/2020	23d	7/15/2020	Mainline A (Station 190 to Station 195)	6	Pipeline Inspection	No meter impact anticipated at this time			
156		4/28/2020	9d	5/6/2020	Mainline C (Station 190 to Station 195)	6	Pipeline Inspection	No meter impact anticipated at this time			
157		8/24/2020	6d	8/29/2020	Mainline A (190A0 to 195A0)	6	Anomaly Investigation Placeholder	No meter impact anticipated at this time			
158		6/10/2020	31d	7/10/2020	Mainline A (190A5 to 190A10)	6	Pipe Replacement	No meter impact anticipated at this time			
159		4/21/2020	40d	5/30/2020	Mainline A (195A0 to Susquehanna River)	6	Facility Modification	No meter impact anticipated at this time			
160		2/4/2020	18d	2/21/2020	Mainline A (Station 195 to 195A5)	6	Pipeline Inspection	No meter impact anticipated at this time			
161		8/3/2020	15d	8/17/2020	Mainline C (195C0 to 195C20)	6	Facility Modification	No meter impact anticipated at this time			
162		10/5/2020	8d	10/12/2020	Mainline C (P333 to P329)	6	Anomaly Investigation Placeholder	No meter impact anticipated at this time			
163		10/6/2020	16d	10/21/2020	Central Penn Line South (610CPA110 to 610CPA00)	6	Anomaly Investigation Placeholder	No meter impact anticipated at this time			
164		9/9/2020	22d	9/30/2020	Mainline C (195C10 to P182)	6	Pipe Replacement	No meter impact anticipated at this time			
165		10/12/2020	8d	10/19/2020	Station 200	6	Facility Modification	Station 200 outage			
166	Dates to be Determined				Station 200	6	Anomaly Investigation Placeholder	No meter impact anticipated at this time			
167		3/17/2020	9d	3/25/2020	Mainline A (Station 200 to Delaware River)	6	Pipeline Inspection	No meter impact anticipated at this time			
168		10/13/2020	9d	10/21/2020	Pottstown Lat 6" (P462 to P148)	6	Anomaly Investigation Placeholder	Possible line outage	6001, 6269	Pottstown, UGI Coventry	N/A
169		8/24/2020	9d	9/1/2020	Marcus Hook Lat A 20" (P328 to P331)	6	Anomaly Investigation Placeholder	Possible line outage	6003, 6041	Chester, Wilmington	N/A
170		3/30/2020	5d	4/3/2020	Marcus Hook Lateral A (P33 to P332)	6	Facility Modification	Meter Outage	6041	Wilmington	N/A
171		7/30/2020	12d	8/10/2020	Marcus Hk-Woodbury A (P372 to J675)	6	Anomaly Investigation Placeholder	Possible line outage	6133, 6029, 6188	Sunolin, Prospect, Eagle Point	

# Pennsylvania & New Jersey Construction & Maintenance



Job Number	Status	Start	Days	Finish	Location	Zone	Maintenance Activity	Anticipated Impact	Meter No.	Meter Name	1Line Nominatable Location ID
172		9/14/2020	18d	10/1/2020	Sunolin-Marcus Hook Lateral Delaware River X-ing (P279 to J571)	6	Pipeline Inspection	No meter impact anticipated at this time			
173		4/13/2020	6d	4/18/2020	Sunolin-Marcus Hook Lat (J913 to J470)	6	Anomaly Investigation Placeholder	No meter impact anticipated at this time			
174		4/13/2020	13d	4/25/2020	Sunolin-Marcus Hook Lat (J473 to J493)	6	Anomaly Investigation Placeholder	No meter impact anticipated at this time			
175		4/27/2020	13d	5/9/2020	Sunolin-Marcus Hook Lat (J493 to J808)	6	Anomaly Investigation	No meter impact anticipated at this time			
176		8/11/2020	12d	8/22/2020	Camden Lat 8" (J806 to J810)	6	Anomaly Investigation Placeholder	Possible line outage	6011	Camden	
177	Dates to be Determined				Chelton Rd M&R	6	Anomaly Investigation Placeholder	Possible meter outage	6299	Chelton Rd	N/A
178		5/22/2020	12d	6/2/2020	PGW Plant B Lat 16" (J743 to J539)	6	Anomaly Investigation	Possible line outage	6275, 6143	Pennsauken, Richmond	N/A
179		6/16/2020	11d	6/26/2020	MHWD_B (P468) to TRWD_B (Mount Laurel M&R)	6	Pipeline Inspection	Controlled flow needed during tool run and minimal impact during tool passage	6304, 6069	Tosco Refinery, Mount Laurel	N/A
180		9/14/2020	22d	10/5/2020	Mainline B (200B10 to R6 @ Delaware River)	6	Pipe Replacement	Meter outage	3093	Skippack Oakford Rec	N/A
181	Dates to be Determined				Mainline B (Delaware to 200B26)	6	Facility Modification	No meter impact anticipated at this time			
182	Dates to be Determined				Mainline C (Delaware to 200C26)	6	Facility Modification	No meter impact anticipated at this time			
183		10/22/2020	24d	11/14/2020	Oreland A Lat 8" (P445 to P449)	6	Anomaly Investigation Placeholder	Possible line outage	6045	Ashmead Road	
184		10/22/2020	24d	11/14/2020	Oreland Ext Lat 12" (P521 to P522)	6	Anomaly Investigation Placeholder	No meter impact anticipated at this time			
185		9/16/2020	8d	9/23/2020	Fairless Lat 24" (J703 to P307)	6	Anomaly Investigation Placeholder	Possible line outage	6309	Fairless	N/A
186		7/20/2020	3d	7/22/2020	Trenton-Woodbury A (J49 to J60)	6	Pipeline Inspection	No meter impact anticipated at this time			
187		9/7/2020	8d	9/14/2020	Mainline C (200C27 to 200C30)	6	Facility Modification	No meter impact anticipated at this time			
188		8/3/2020	4d	8/6/2020	Rockaway Lateral (Y114 to Y73)	6	Facility Modification	Meter outage	6334	Floyd Bennett	N/A
189		8/3/2020	15d	8/17/2020	Lower Bay Loop C (200C56 to 200C60)	6	Facility Modification	Meter outage	6278, 6334, 6210	Morgan, Floyd Bennett, Long Beach	N/A
190		4/13/2020	10d	4/22/2020	Lower Bay Loop C (R1 to Y27)	6	Pipeline Inspection	Controlled flow needed during tool run and minimal impact during tool passage	6334, 6210	Floyd Bennett, Long Beach	N/A

# Pennsylvania & New Jersey Construction & Maintenance



Job Number	Status	Start	Days	Finish	Location	Zone	Maintenance Activity	Anticipated Impact	Meter No.	Meter Name	1Line Nominatable Location ID
191		7/22/2020	8d	7/29/2020	Mainline E (J711 to J840)	6	Anomaly Investigation Placeholder	No meter impact anticipated at this time			
192		7/11/2020	11d	7/21/2020	Mainline A (J640 to J637)	6	Anomaly Investigation Placeholder	Possible line outage	6031, 6197, 6033, 6347, 6345, 6346, 6023, 6323, 6327	Central, Edison Gen Sta, Sewaren, Sewaren Utility, Railroad Units 1-5, Railroad Unit 6, Erie Street, BEC, Delancy, Raymond	N/A
193		11/3/2020	18d	11/20/2020	Mainline A (TREN-A Tap to Raritan River)	6	Pipeline Inspection	No meter impact anticipated at this time			
194		6/2/2020	9d	6/10/2020	Mainline E (Raritan River to 200E75)	6	Pipeline Inspection	No meter impact anticipated at this time			
195		9/24/2020	10d	10/3/2020	Bayonne Lateral 14" (J883 to J779)	6	Anomaly Investigation Placeholder	Possible line outage	6323	BEC	N/A
196		6/29/2020	12d	7/10/2020	Hudson-West End Lat A 24" (J819 to J803)	6	Anomaly Investigation Placeholder	Possible line outage	6043, 6230, 6236	West End, Hudson Marion, Kearny	
197		7/14/2020	2d	7/15/2020	Harrison Lateral	6	Pipeline Inspection	Controlled flow needed during tool run	6039	Harrison	N/A
198		6/3/2020	25d	6/27/2020	Mainline A (J629 to 200A110)	6	Anomaly Investigation Placeholder	Possible line outage	6039	Harrison	
199	Dates to be Determined				Narrows M&R	6	Anomaly Investigation Placeholder	Possible line outage	6062	Narrows	
200	Dates to be Determined				Manhattan 134th St. Meter Station	6	Facility Modification	Meter outage	6051	Manhattan	N/A
201		5/11/2020	11d	5/21/2020	Mainline Caldwell B Loop (505B10 to 505B30)	6	Anomaly Investigation Placeholder	Possible line outage	6287, 6302, 6255	Bridgewater, Hoechst Celanese Cogen, Gillette	N/A
202		9/2/2020	14d	9/15/2020	Mainline Caldwell D Loop (200D27 to JL88)	6	Anomaly Investigation Placeholder	No meter impact anticipated at this time			
203		4/27/2020	10d	5/6/2020	Leidy Line B (Station 505) to Leidy Line C (Station 515)	6	Pipeline Inspection	No meter impact anticipated at this time			
204		5/11/2020	10d	5/20/2020	Leidy Line C (Station 505 to Delaware River)	6	Pipeline Inspection	No meter impact anticipated at this time			
205		9/1/2020	11d	9/11/2020	Leidy Line D (505LD65 to 505LD81)	6	Anomaly Investigation Placeholder	No meter impact anticipated at this time			
206		3/9/2020	18d	3/26/2020	Leidy Line B (Delaware River to Station 515)	6	Pipeline Inspection	No meter impact anticipated at this time			



# Pennsylvania & New Jersey Construction & Maintenance



Job Number	Status	Start	Days	Finish	Location	Zone	Maintenance Activity	Anticipated Impact	Meter No.	Meter Name	1Line Nominatable Location ID
207	Dates to be Determined				Leidy Line A (515LA22 to 515LA28)	6	Facility Modification	Possible impact on the availability of non-primary firm services scheduled through constraint location Leidy Line Station 520 W, Leidy Line M.P. 205 W			
208		9/12/2020	24d	10/5/2020	Central Penn Line North (GOV720 to GOV720)	6	Anomaly Investigation Placeholder	No meter impact anticipated at this time			
209	Dates to be Determined				Central Penn Line North (605CPA10 to 605CPA00)	6	Facility Modification	Possible pressure reduction			
210		8/20/2020	8d	8/27/2020	Leidy Line B (517LB0 to 520LB30)	6	Anomaly Investigation Placeholder	No meter impact anticipated at this time			
211		2/17/2020	12d	2/28/2020	Leidy Line B (Station 517 to MLV 520LB30)	6	Pipeline Inspection	No meter impact anticipated at this time			
212		8/28/2020	4d	8/31/2020	Leidy Line D (517LD15 to 517LD19)	6	Anomaly Investigation Placeholder	No meter impact anticipated at this time			
213		8/6/2020	14d	8/19/2020	Wharton Ext Lat 12" (PL781 to PL73)	6	Anomaly Investigation Placeholder	No meter impact anticipated at this time			
214		6/1/2020	92d	8/31/2020	Station 535	6	Facility Modification	Station 535 outage			

# Now What?

## > Individual Project Updates

- Job numbers and outage dates are subject to change
- 2020 Transco 1Line maintenance table posted to EBB by year's end
  - Jobs drop off list when either completed, cancelled, combined with another job, or deferred

## > Further Questions?

- Ross Sinclair (Manager, Pipeline Control)
  - 713-215-2688
  - [Ross.M.Sinclair@Williams.com](mailto:Ross.M.Sinclair@Williams.com)
- Rich Truxell (Manager, Pipeline Control)
  - 713-215-4044
  - [Richard.W.Truxell@Williams.com](mailto:Richard.W.Truxell@Williams.com)
- Tyler Tunic (Maintenance Coordinator, Pipeline Control)
  - 713-215-2354
  - [Tyler.Tunic@Williams.com](mailto:Tyler.Tunic@Williams.com)
- Your Transco Representative

# Winter Operations 2019 – Eastern Interstates (EI) Commercial

*October 2019*

NYSE: WMB  
williams.com



# Commercial Update

- > Organizational Realignment
- > Customer Forum
- > Rate Case Status
- > State of the Market
- > Project Updates
- > Business Opportunities

# Williams Organizational Realignment



- > Scott Hallam, SVP Transmission, Houston
  - **Daniel Drew**, VP Commercial Eastern Interstates, Houston
  - **Glenn Jasek**, VP/GM Eastern Interstates, Houston
    - **John Suchar**, Dir Operations – Cypress, Houston
    - **Eric Raymond**, Dir Operations – Princeton, NJ
    - **Eric Schmidt**, Dir Operations – Atlanta, GA
    - **Ty Henderson**, Dir Operations – Charlottesville, VA
    - **Charlotte Hutson**, Director Rates & Regulatory, Houston
  - **Pat Carroll**, VP Commercial Gulf of Mexico, Houston
  - **Mark Cizek**, VP/GM Gulf of Mexico, Houston
  - **Open**, VP/GM Northwest Pipeline, Houston

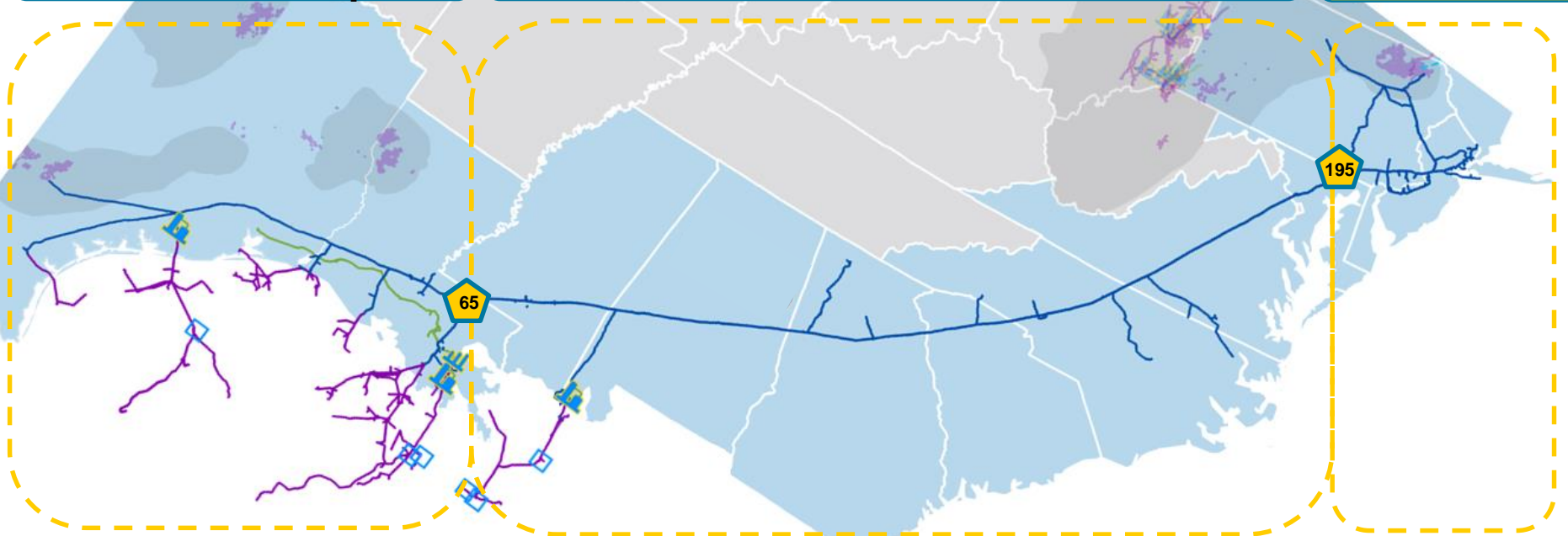
# El Geography

## Encourage Commercial Sophistication

**M1**  
**Production & Exports**

**M2**  
**Power Generation & LDC's**

**M3**  
**Prod & LDC**



**Market Area 1**

Texas & Louisiana to  
Station 65

**Market Area 2**

East Coast markets from  
Station 65 to Station 195

**Market Area 3**

Northeast  
markets from  
Station 195 north

# El Commercial

**Daniel Drew - VP Commercial**

**OPEN**  
Commercial  
Services  
Director M1

**OPEN**  
Commercial  
Services  
Director M2

**Hector Alatorre**  
Commercial  
Services  
Director M3

**Paul Egner**  
Joint Venture  
Consultant

**Ross Conatser**  
Market Intelligence  
Consultant

**Martha Janousek**  
Commercial  
Technology  
Manager

**Christine Cromer**  
Admin Assistant  
(M1 / Technology)

**Julian Arias**  
Commercial  
Optimization (M2)

**John Cassapo**  
Commercial  
Optimization (M3)

**Ross Haggard**  
Commercial  
Services Rep\* (M1)

**Suzie Heiser**  
Commercial  
Services Rep\* (M2)

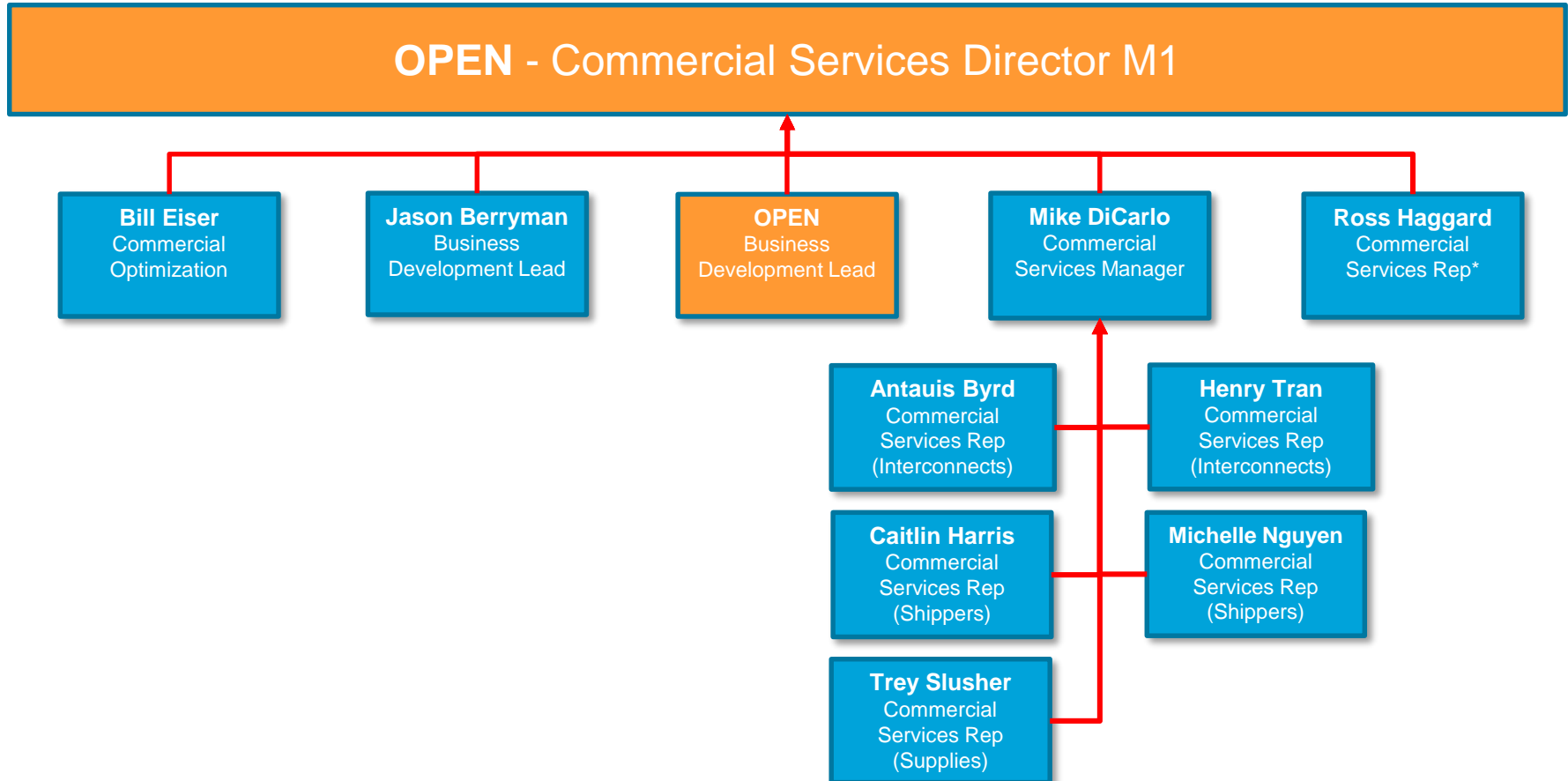
**Laurie Catlett**  
Commercial  
Services Rep\* (M3)

\* Short Term Opportunity  
& Market Analysis



# El – Market Area 1

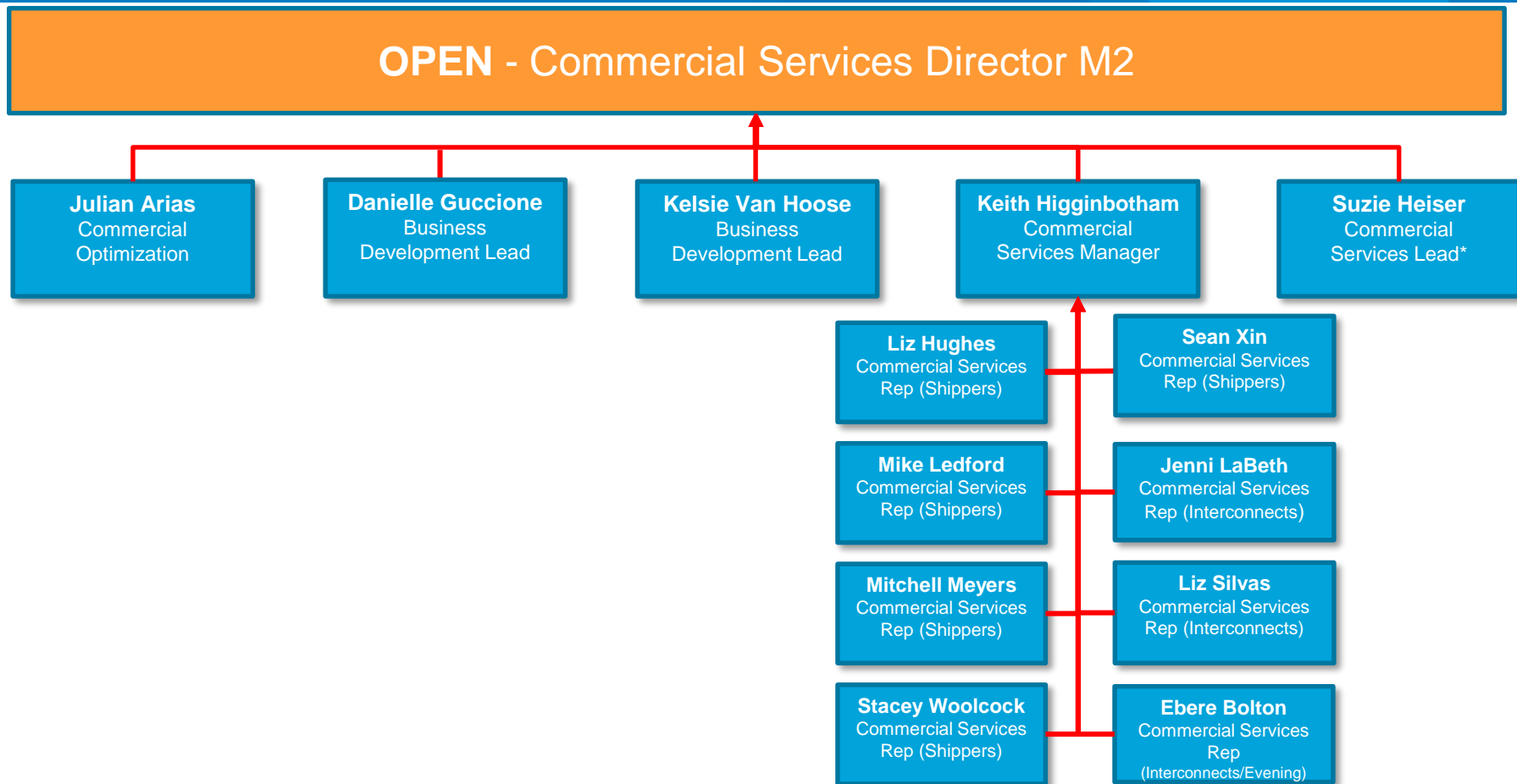
< Station 65



\* Short Term Opportunity  
& Market Analysis

# El – Market Area 2

## Station 65 to Station 195



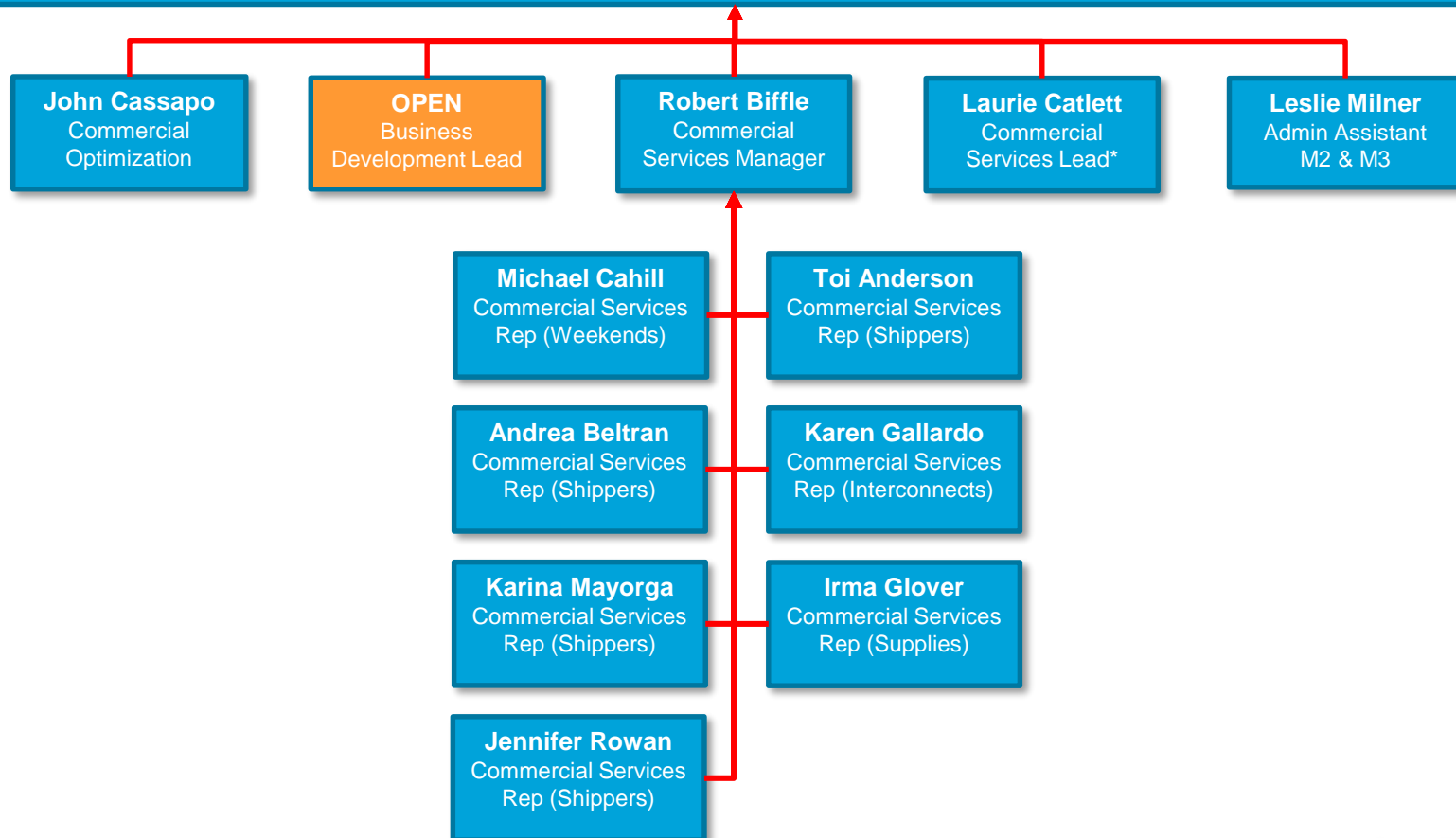
\* Short Term Opportunity  
& Market Analysis

# El – Market Area 3

## Station 195 & East



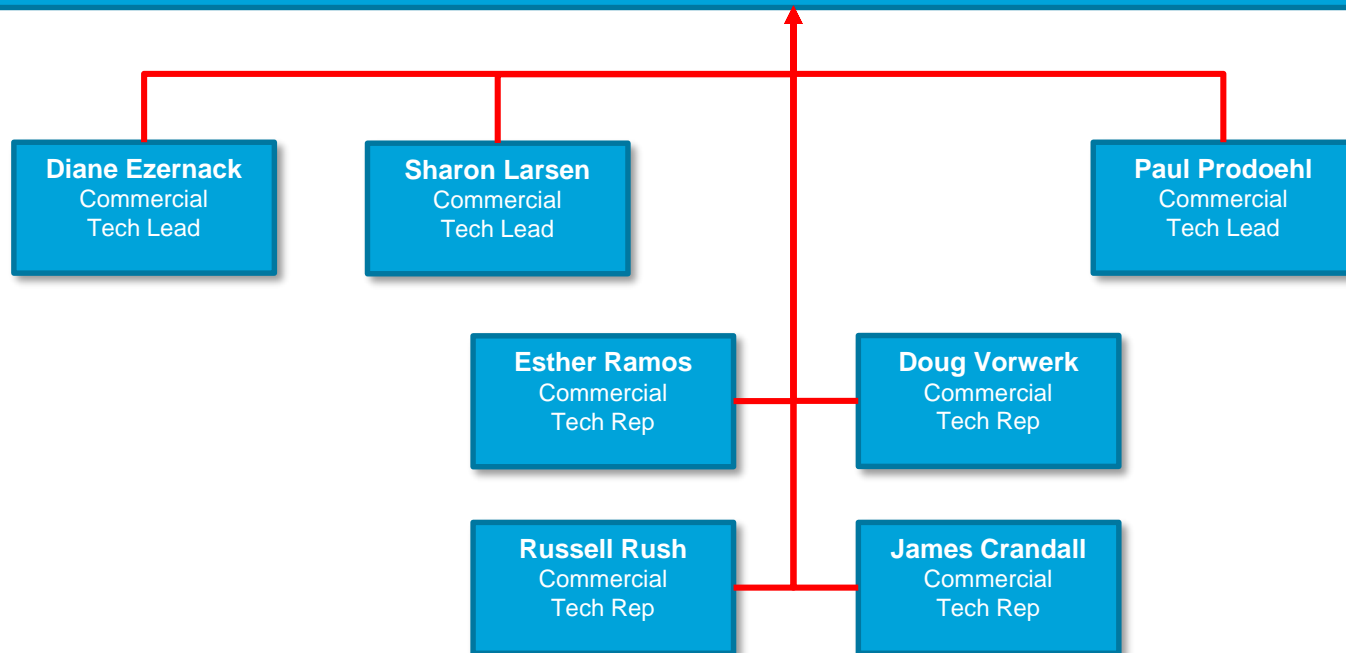
### Hector Alatorre - Commercial Services Director M3



\* Short Term Opportunity  
& Market Analysis

# EI – Commercial Technology

Martha Janousek - Commercial Technology Manager



# Customer Focus Group

- > Meeting in Houston on August 21, 2019
- > Total of 69 customers representing 44 companies participated
- > Objective: obtain candid feedback around how we can all commercially behave in a more predictable and consistent manner in what is an increasingly challenging market to forecast
- > Meeting the needs of our firm customers will remain a top priority, while Transco is evolving from a system that could historically afford to be overly accommodating, but must now conform to being more consequentially flexible
- > Discuss the following top issues:
  - OFO Issuance and Penalty Escalation
  - Storage Supported System Flexibility
  - Recovery of the ~\$57M Cashout Account Loss
  - Changes to Cashout Pricing Methodology

# Customer Focus Group

## Imbalances

- > Introduction of a tiered-penalty system that enforces the existing tariff flexibility brackets (5% Monthly, 10% Daily).
- > Provide a guarantee make up period in 17 business days and tighter percentage with realistic pricing
- > Prior to operational concerns, increase pipeline communication with shippers and operators regarding imbalances and plans to resolve
- > Push towards daily imbalance management
- > Consider offering OBAs subject to negotiations at all locations so that imbalances will be at the location and not on the contract
- > Flow control pressuring off-threshold allowance at the production facilities to allow for makeup
- > Create PAL-type service for daily swings. Auto PAL location balancing with tiering

# Customer Focus Group

## OFO's



- > Offer a tiered penalty pricing OFO, include provisions for requiring makeup of imbalances within a specified timeframe and provisions to not allow cumulative imbalance to change by more than a specified percentage or amount
- > OFO's by netting imbalances across locations/shippers within a geographic area
- > Increase tolerance quantity for smaller customers for OFOs. Lessen the impact to less offending shippers
- > Suggestion was to call an OFO one direction for Sat/Sun and the opposite direction on Monday
- > Customers want the offenders to be called out specifically, although forecasting the offender in advance was recognized as challenging
- > Customers mentioned that other pipes have a monthly OFO on cumulative balances that seems to work



# Customer Focus Group

## Cashout Balance & Pricing

- > Cashout price is too predictable, shippers know by the 20th of the month what position they need to take
- > Add a volume cap component for imbalances
- > Do not penalize the shippers that are helping the pipeline, do not incentivize behavior the pipeline doesn't want
- > Hold imbalances at the point of delivery versus the point of receipt
- > Eliminate cashout and makeup all imbalances in-kind
- > Lower tolerance of cashout tiering to smaller percentages to make more punitive
- > Consider daily or weekly cashout verses monthly
- > Cashout proposal for production facility OBAs at geographical zone/OIA pricing with increasingly punitive tiering of index prices
- > Change to non-average price

# Customer Focus Group

## Cashout Balance & Pricing

- > The ~\$57M cashout account loss will be addressed separately from the amendment to the cashout pricing methodology
- > Customers are amenable to compensating the loss over an appropriate timeframe (if it is fairly targeted towards those that contributed to it)
- > Customers are not opposed to a monthly true up of the cashout account whether surplus or surcharge as long as appropriately not punitive to those that did not contribute

# Customer Focus Group

## Non-Ratable Takes

- > Replace shipper imbalances with an OBA at all locations with negotiated non-ratable take provisions and/or build facilities in place at the locations to accommodate it
- > Establish a predefined acceptable level of non-ratable takes and anything above that would be subject to additional fees
- > Incorporate an hourly overtake service
- > Transco partnership with producers to assist in managing non-ratable takes

# Customer Focus Group

## Storage Backed Services

- > Explore if Transco would offer a standalone storage offering that is not related to a new expansion project.
- > No notice storage service for non-ratable takes
- > More system flex storage or third-party storages (with exchange agreements)
- > Daily imbalance fee like PAL to acquire more storage.

# Customer Focus Group

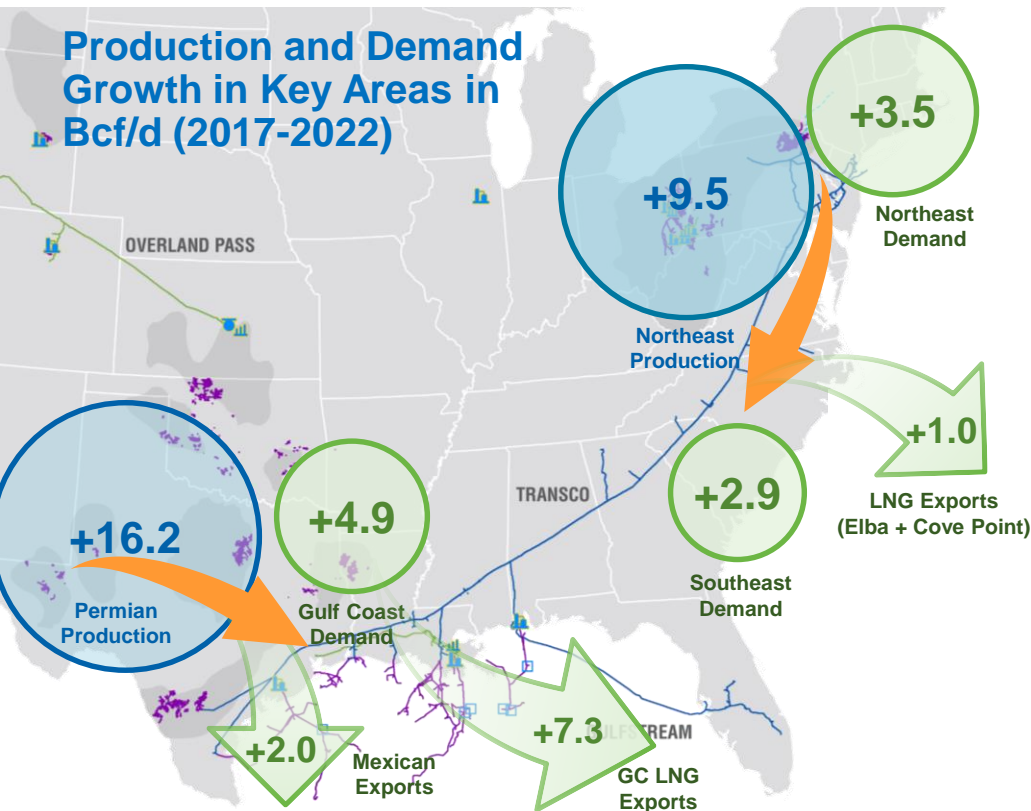
## Status

- > Following forum:
  - Transco became focused on getting a final settlement of the rate case and developing draft tariff changes
  - Determined that our Rates and Regulatory, Commercial and Legal teams needed additional time to prepare the tariff changes
  - Internal efforts continue

# Rate Case Status (RP18-1126-000)

- > Filed: 8/31/2018
- > Term Sheets and Rates provided to all customers: 10/18/19
- > Customers specify if they agree or do not agree with the settlement: 10/25/19
- > If all customers agree then first draft of the settlement: 12/4/19
- > Goal: file by 12/31/19
- > Refunds will be consistent with settlement and after FERC approval

# Williams best positioned to capitalize on significant opportunities to connect low-cost supplies to premier demand markets



Majority of production growth in Northeast with significant growth also occurring in the Permian

Williams' assets uniquely aligned with demand growth along the East Coast from Texas all the way to the Northeast

Leveraging significant investments in Northeast and Transco to connect best supplies to the best markets

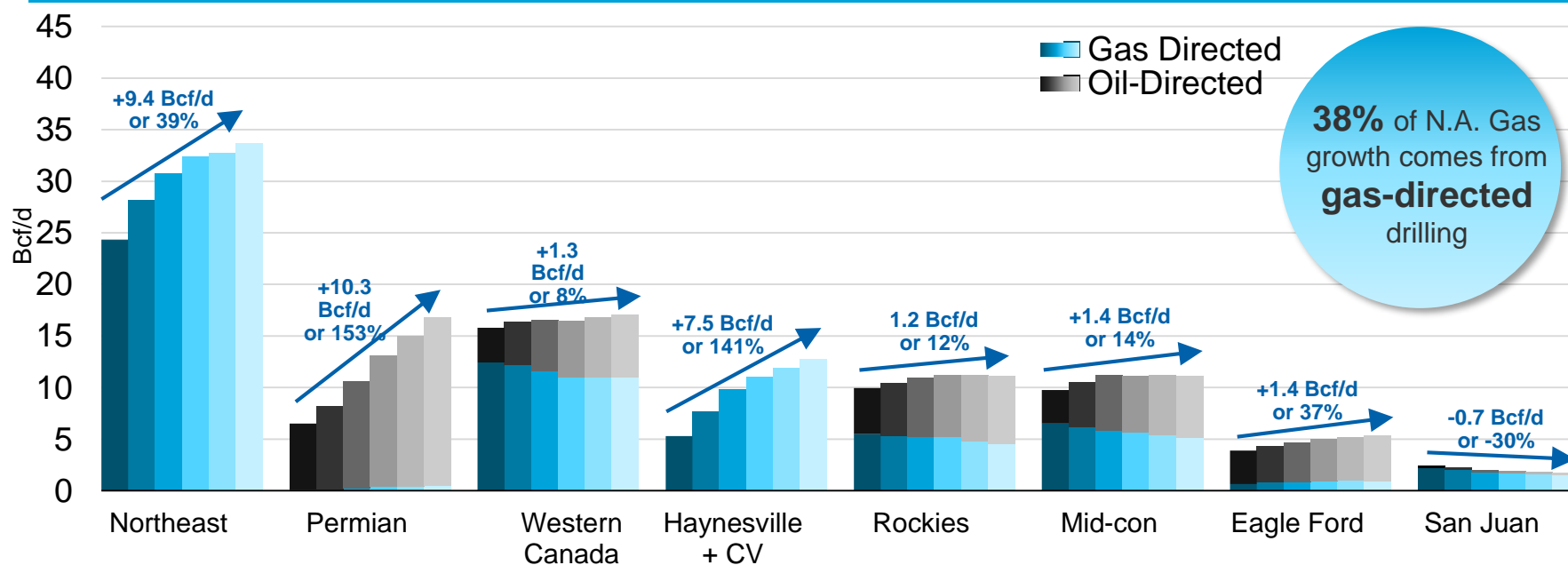
Source: Wood Mackenzie 1H '19

Note: All other NA production amounts to +2.53 Bcf/d of growth '17 - '22 and all other NA demand amounts to +6.4 Bcf/d of growth '17 - '22



# Supply from advantaged basins must grow to meet forecasted demand

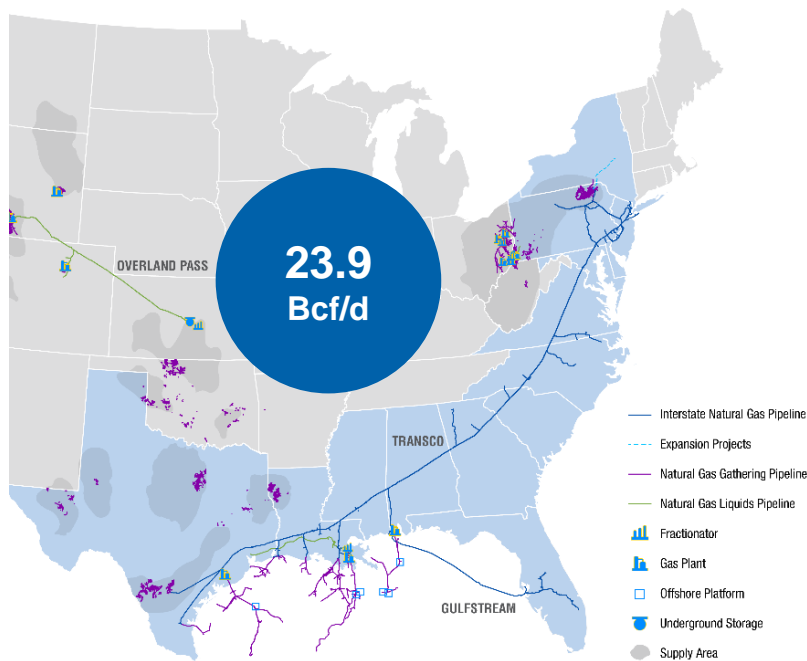
NATURAL GAS FORECASTED PRODUCTION BY REGION & WELL TYPE (2017–2022)



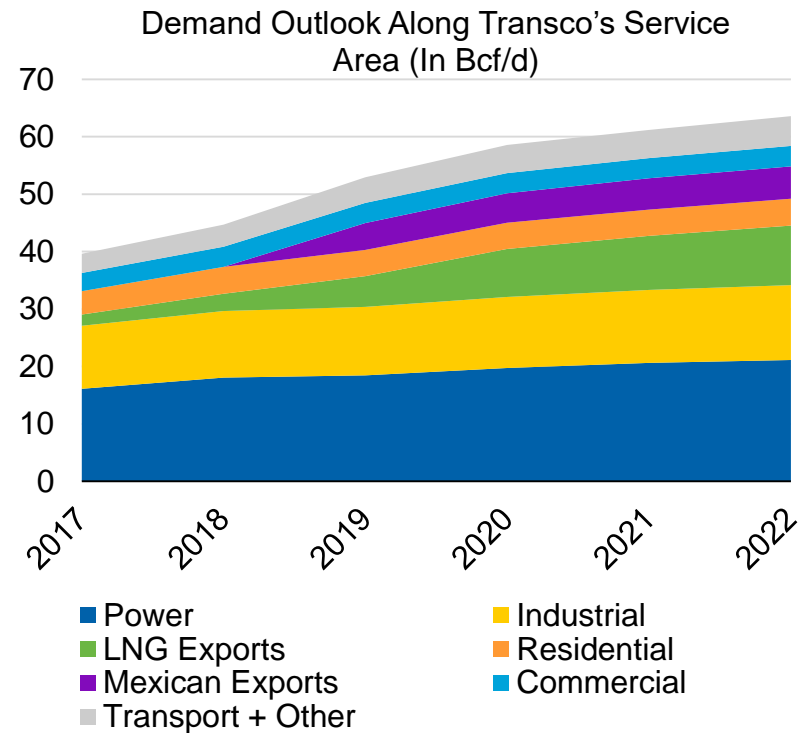
Note: Chart excludes Eastern Canada, Alaska, West Coast, Barnett, Gulf Coast conventional & GOM production that amounts to a decline of 3.5 Bcf/d through 2022; CV=Cotton Valley

Source: Wood Mackenzie 1H '19

# Robust domestic and international demand drives Transco growth through 2022



Source: Wood Mackenzie 1H 2019

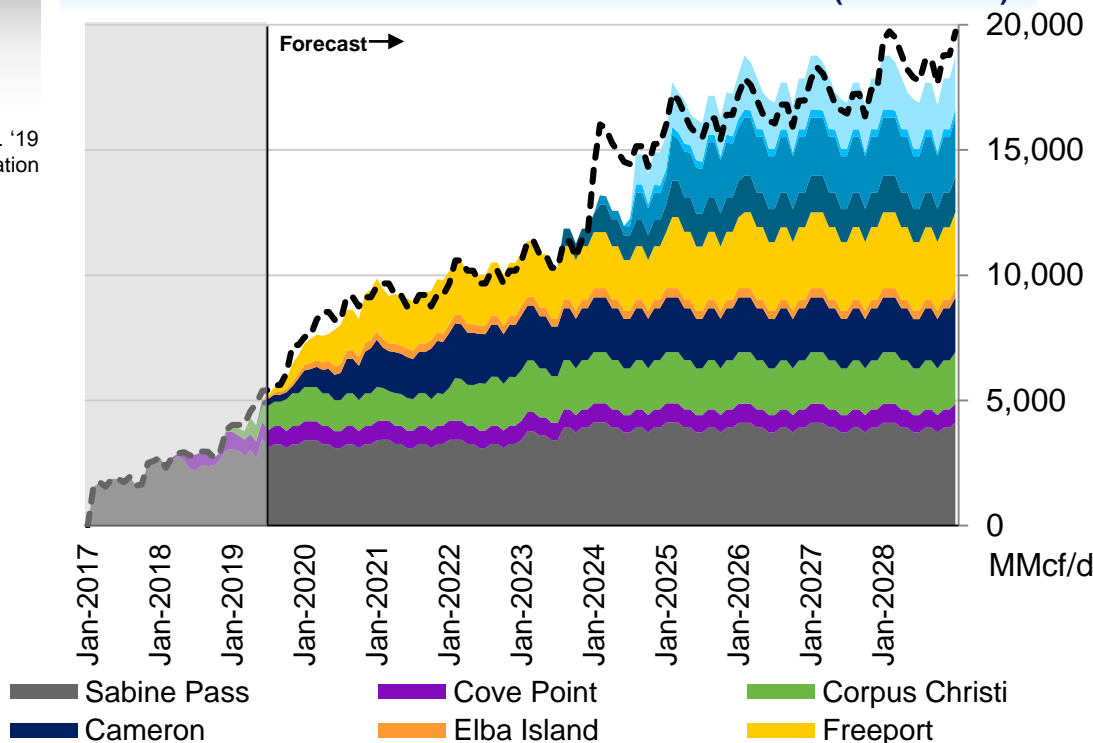


# North American LNG export growth has just begun



	Project Name	Bcf/d	Status
<b>+5.7</b>	Sabine Pass Trains 1-5	3.3	Operational
	Cove Point	0.7	Operational
	Corpus Christi Train 1	0.7	Operational
	Cameron Train 1	0.7	Operational
	Elba Island	0.3	Operational
<b>+15.1</b> <b>FORECASTED N.A. LNG EXPORT CAPACITY</b>	Corpus Christi Train 2	0.7	FERC Authorization Aug. '19
	Freeport Train 1	0.7	Awaiting FERC Authorization
	Corpus Christi Train 3	0.7	Under construction
	Cameron Train 2-3	1.4	Under construction
	Freeport Train 2-3	1.4	Under construction
	Sabine Pass Train 6	0.7	Under construction
	Golden Pass	2.2	Under construction
	LNG Canada	1.9	Under construction
	Calcasieu Pass	1.4	FID Aug. 2019
	Freeport Train 4	0.8	Awaiting FID
	Port Arthur	1.6	Awaiting FID
	Woodfibre LNG	0.3	Awaiting FID
	Corpus Christi Stage 3	1.3	Announced
<b>+19.4</b> <b>INCREMENTAL CAPACITY</b>	Cameron Expansion	1.4	Awaiting FID
	Delfin	1.8	Awaiting FID
	Driftwood	4.0	Awaiting FID
	Gulf LNG	1.5	Awaiting FID
	Lake Charles	2.2	Awaiting FID
	Magnolia LNG	1.1	Awaiting FID
	Jordan Cove	1.1	Announced
	Plaquemines	2.7	Announced
	Rio Grande	3.6	Announced

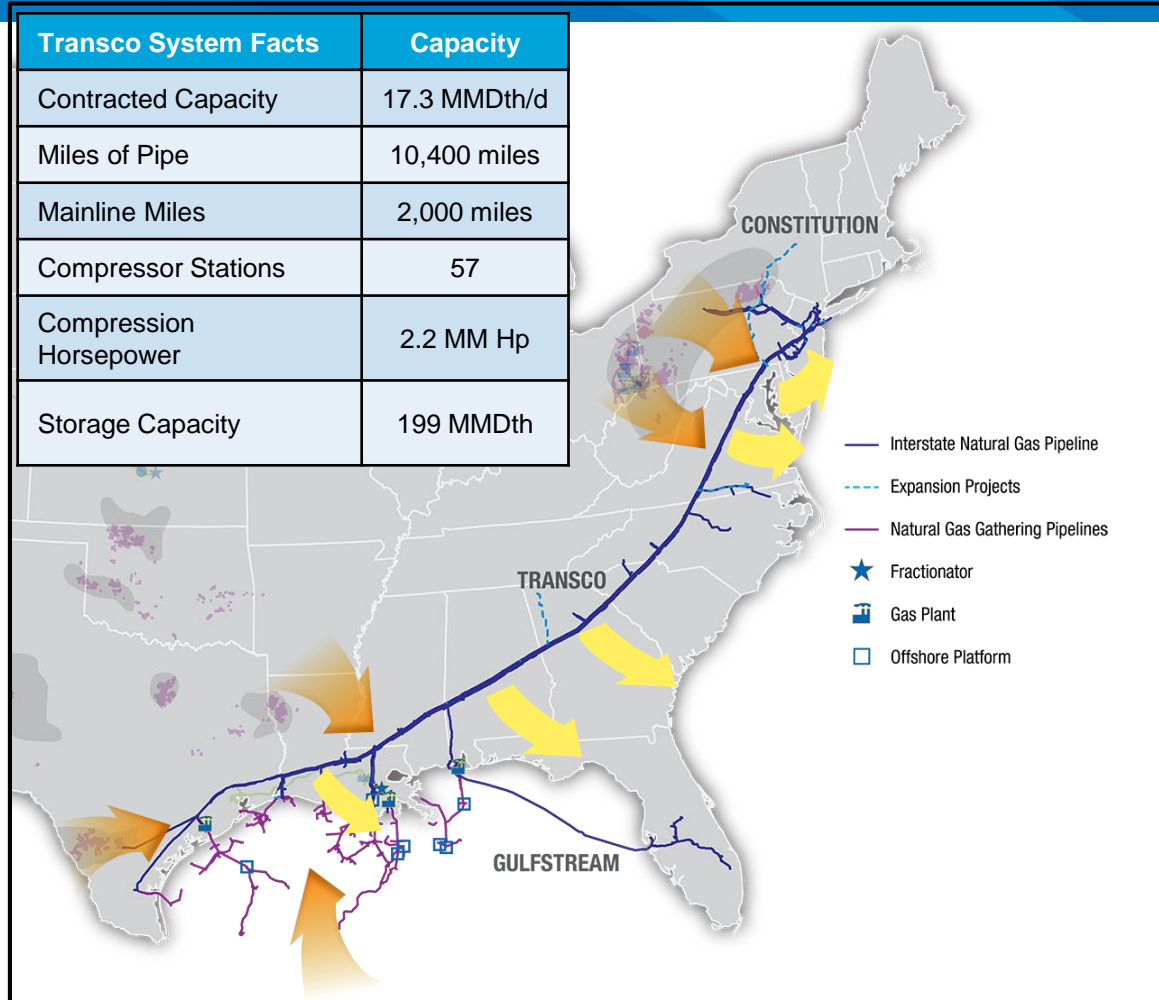
**FORECASTED N.A. LNG EXPORT MONTHLY VOLUMES (2017 – 2028)**



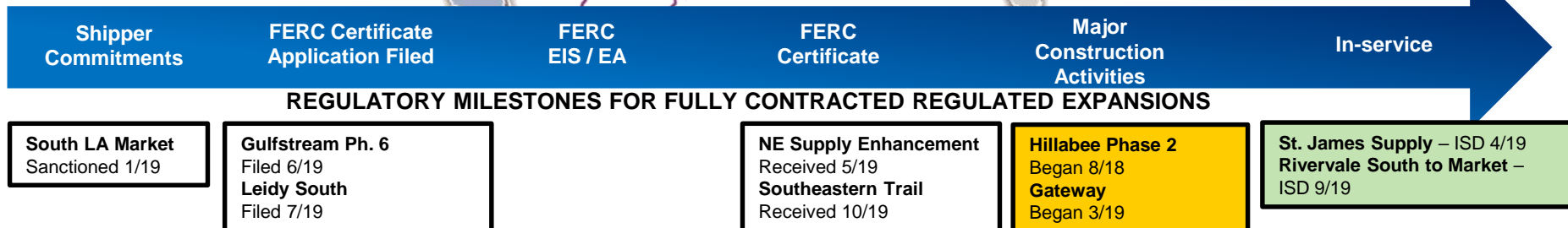
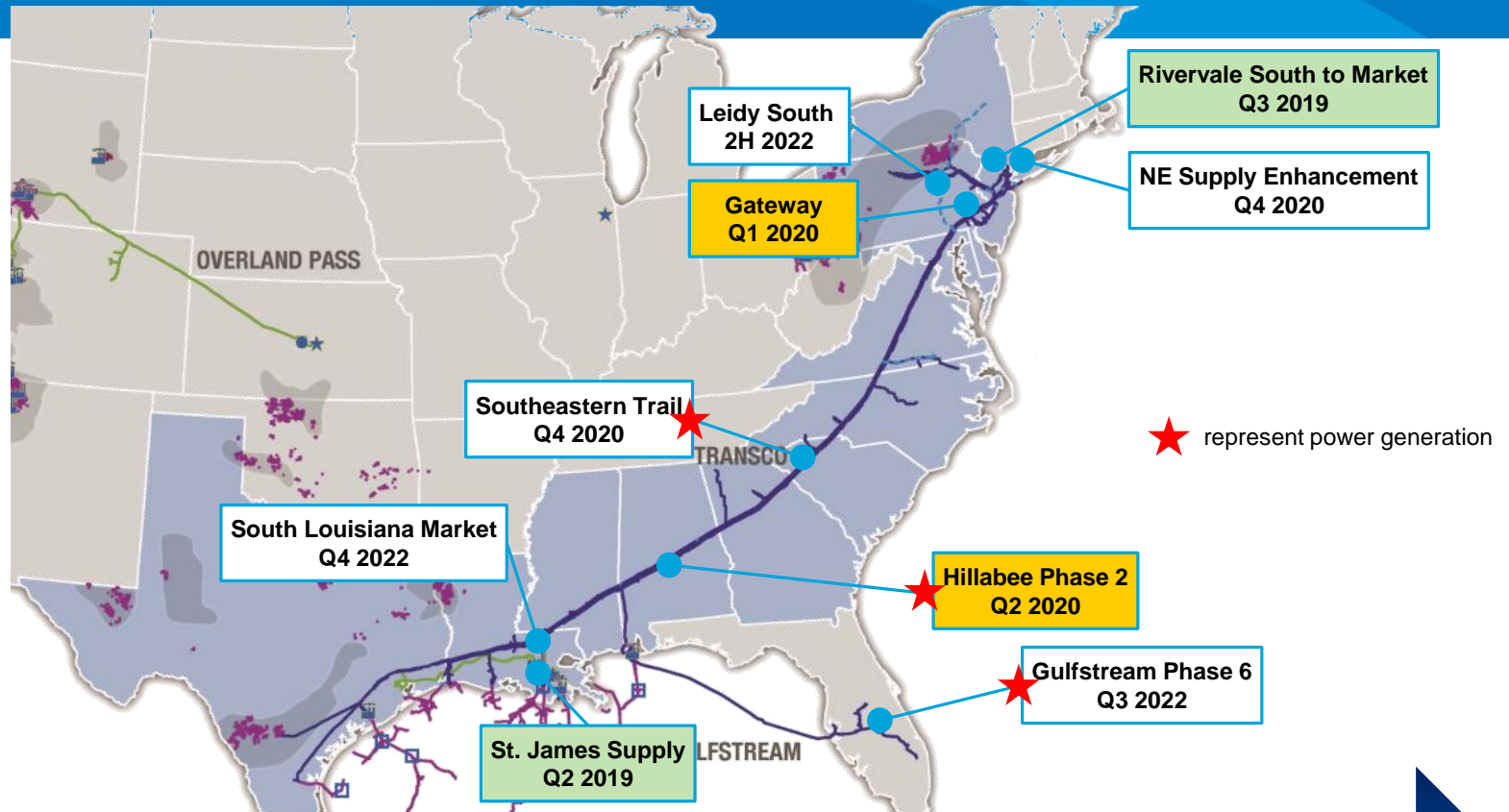
Source: Wood Mackenzie 1H '19; Company press releases. Note: FERC Authorization = To commence full commercial service beyond early-stage commissioning cargoes

# Transco: Access to Cost-Effective Supplies & Premium Markets

- > Nation's largest-volume natural gas transmission pipeline
- > Extends 1,800 miles from South Texas to New York City
- > Delivers approximately 10% of U.S. gas to major markets like New York City, Philadelphia & Washington D.C.



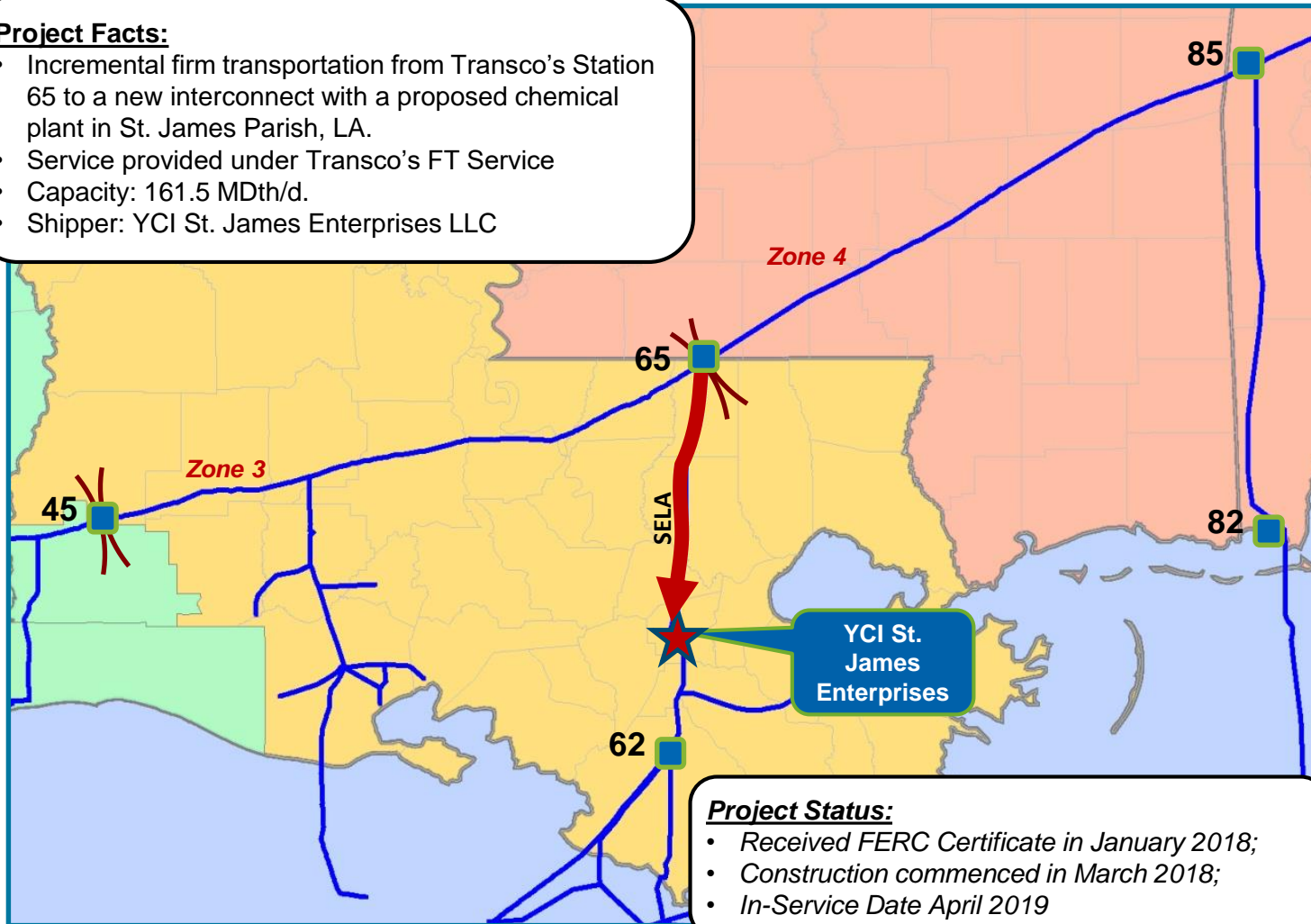
# Eastern Interstates – Projects in Execution



# St. James Supply

**Project Facts:**

- Incremental firm transportation from Transco's Station 65 to a new interconnect with a proposed chemical plant in St. James Parish, LA.
- Service provided under Transco's FT Service
- Capacity: 161.5 MDth/d.
- Shipper: YCI St. James Enterprises LLC

**Project Status:**

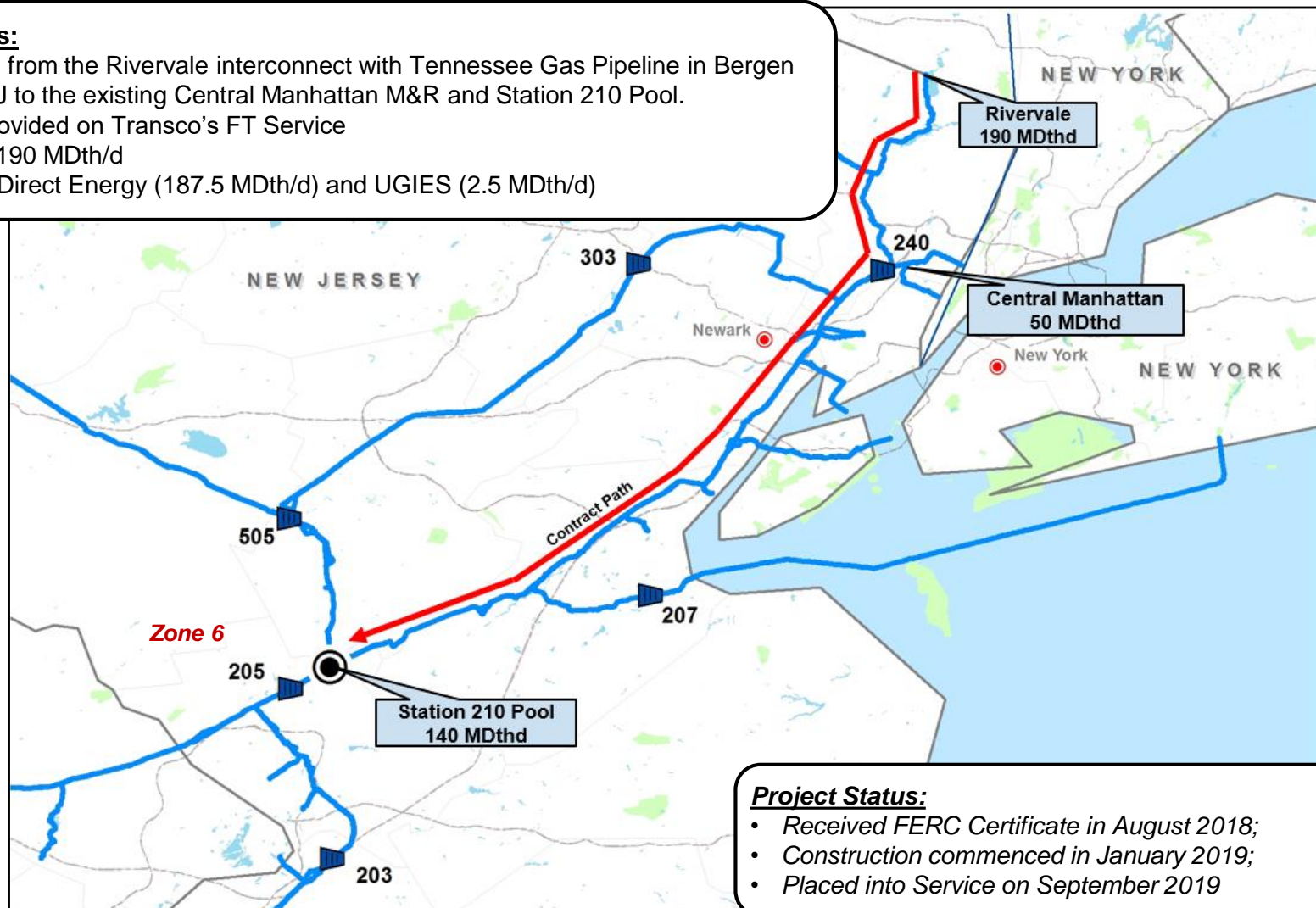
- Received FERC Certificate in January 2018;
- Construction commenced in March 2018;
- In-Service Date April 2019



# Rivervale South to Market

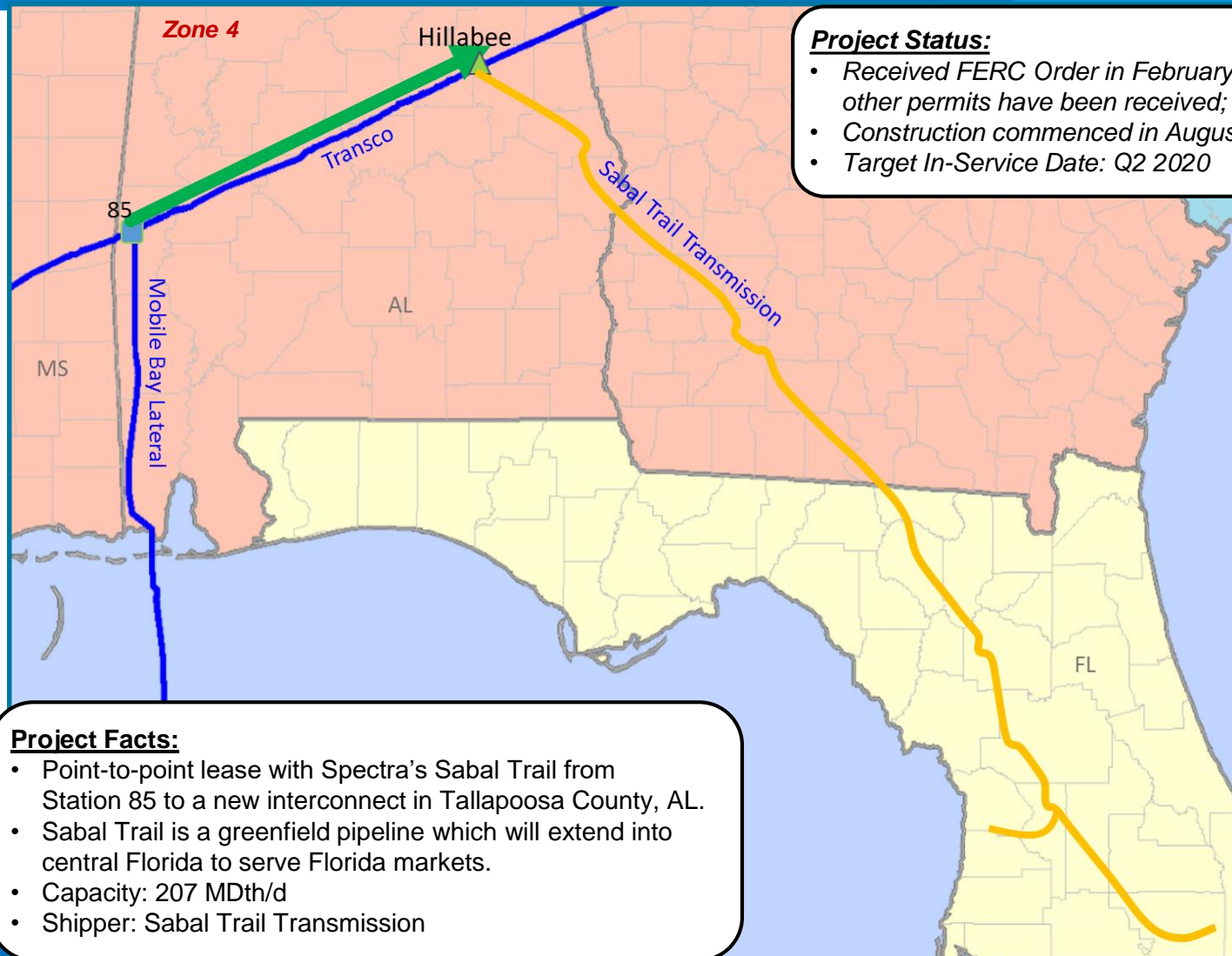
**Project Facts:**

- Expansion from the Rivervale interconnect with Tennessee Gas Pipeline in Bergen County, NJ to the existing Central Manhattan M&R and Station 210 Pool.
- Service provided on Transco's FT Service
- Capacity: 190 MDth/d
- Shippers: Direct Energy (187.5 MDth/d) and UGIES (2.5 MDth/d)

**Project Status:**

- Received FERC Certificate in August 2018;
- Construction commenced in January 2019;
- Placed into Service on September 2019

# Hillabee Phase 2

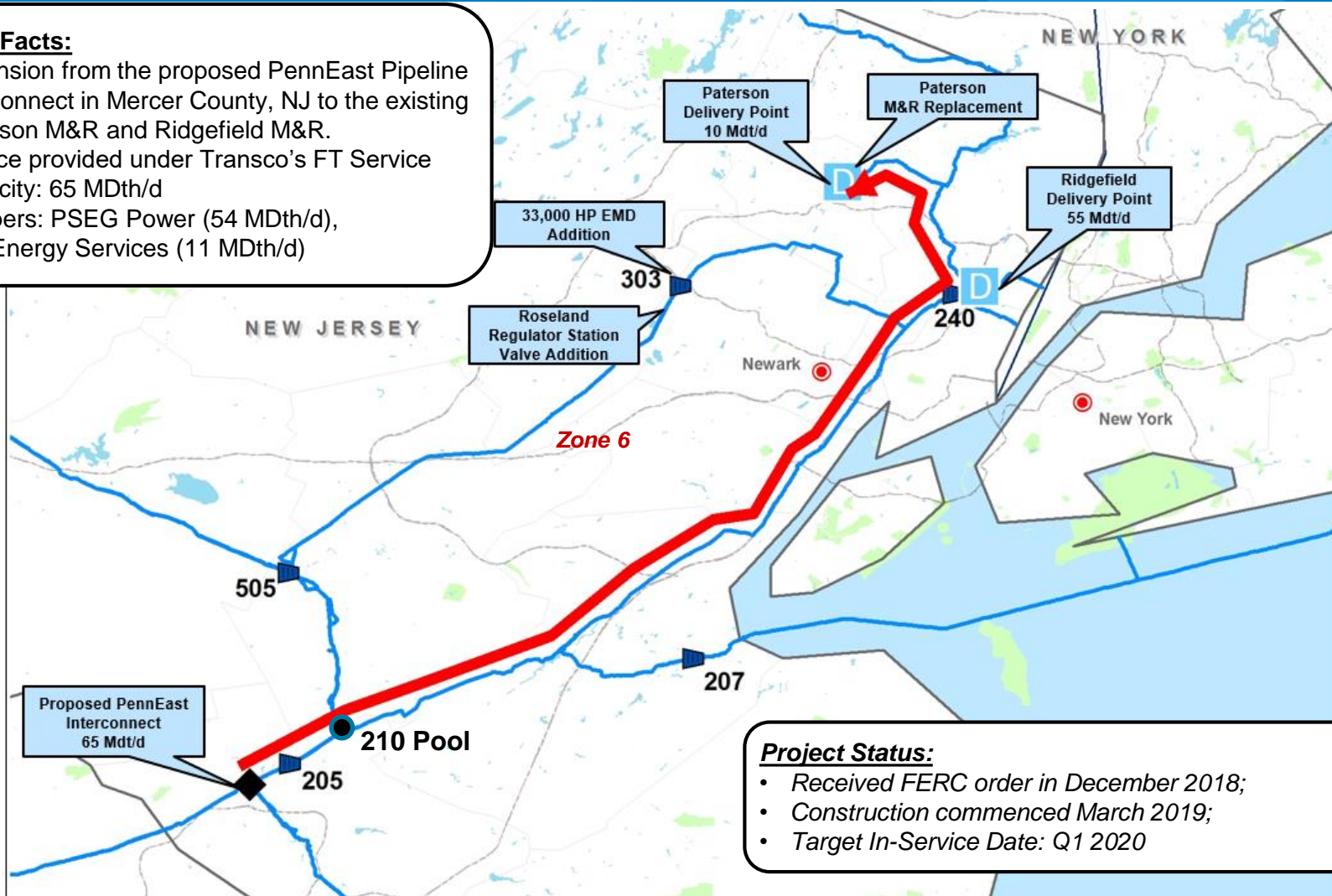




# Gateway

**Project Facts:**

- Expansion from the proposed PennEast Pipeline interconnect in Mercer County, NJ to the existing Paterson M&R and Ridgefield M&R.
- Service provided under Transco's FT Service
- Capacity: 65 MDth/d
- Shippers: PSEG Power (54 MDth/d), UGI Energy Services (11 MDth/d)

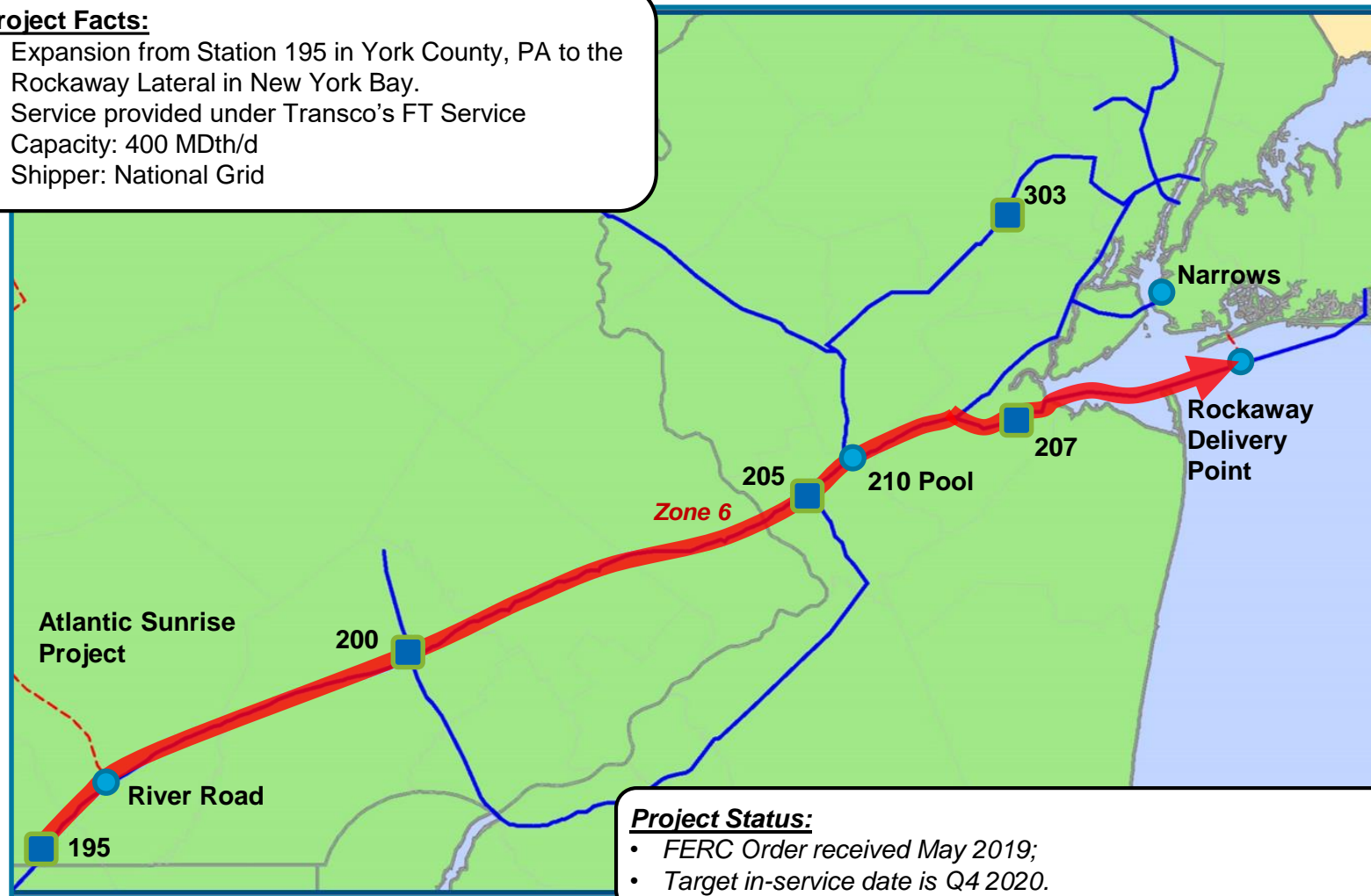
**Project Status:**

- Received FERC order in December 2018;
- Construction commenced March 2019;
- Target In-Service Date: Q1 2020

# NE Supply Enhancement

**Project Facts:**

- Expansion from Station 195 in York County, PA to the Rockaway Lateral in New York Bay.
- Service provided under Transco's FT Service
- Capacity: 400 MDth/d
- Shipper: National Grid

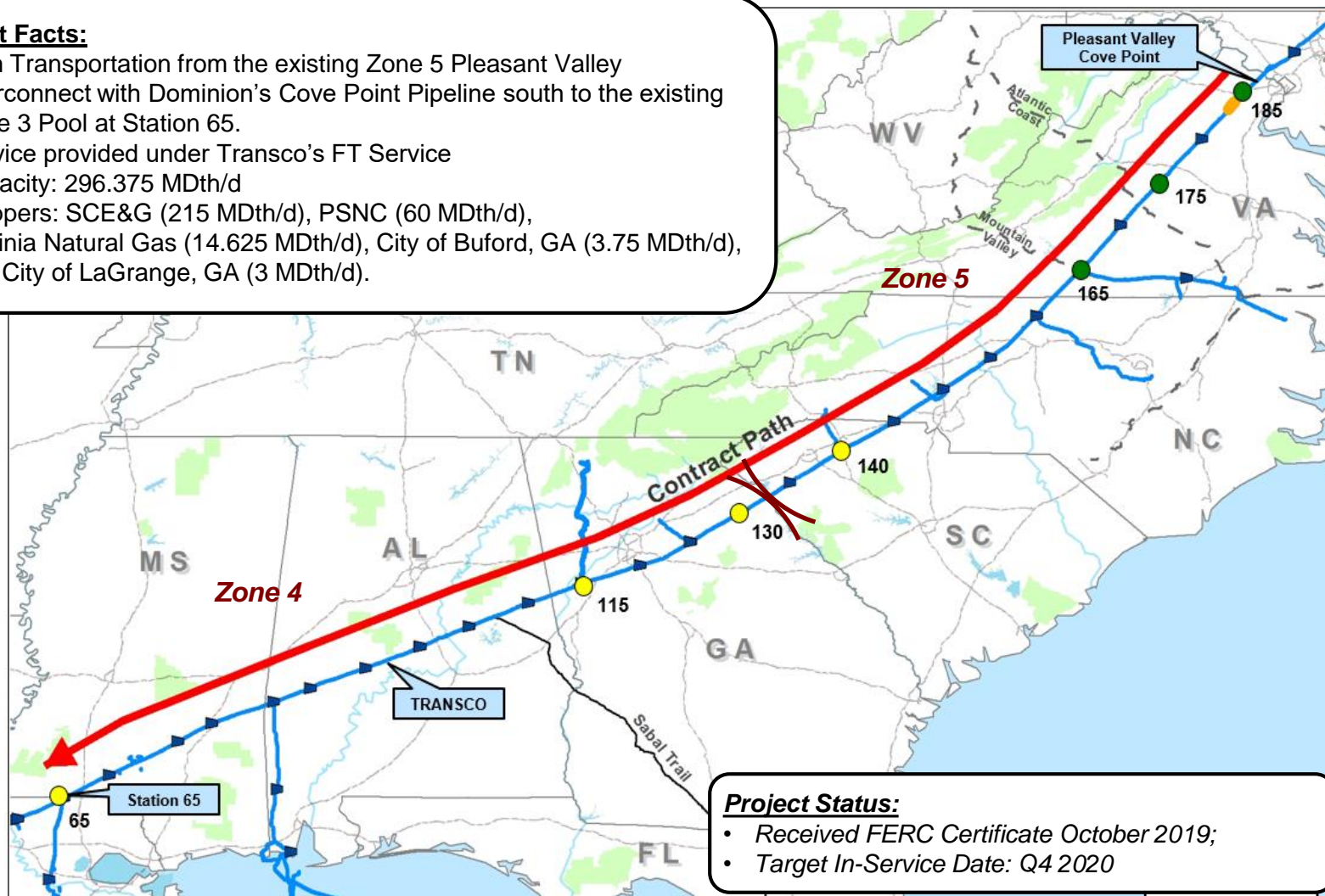
**Project Status:**

- FERC Order received May 2019;
- Target in-service date is Q4 2020.

# Southeastern Trail

## Project Facts:

- Firm Transportation from the existing Zone 5 Pleasant Valley Interconnect with Dominion's Cove Point Pipeline south to the existing Zone 3 Pool at Station 65.
- Service provided under Transco's FT Service
- Capacity: 296.375 MDth/d
- Shippers: SCE&G (215 MDth/d), PSNC (60 MDth/d), Virginia Natural Gas (14.625 MDth/d), City of Buford, GA (3.75 MDth/d), and City of LaGrange, GA (3 MDth/d).

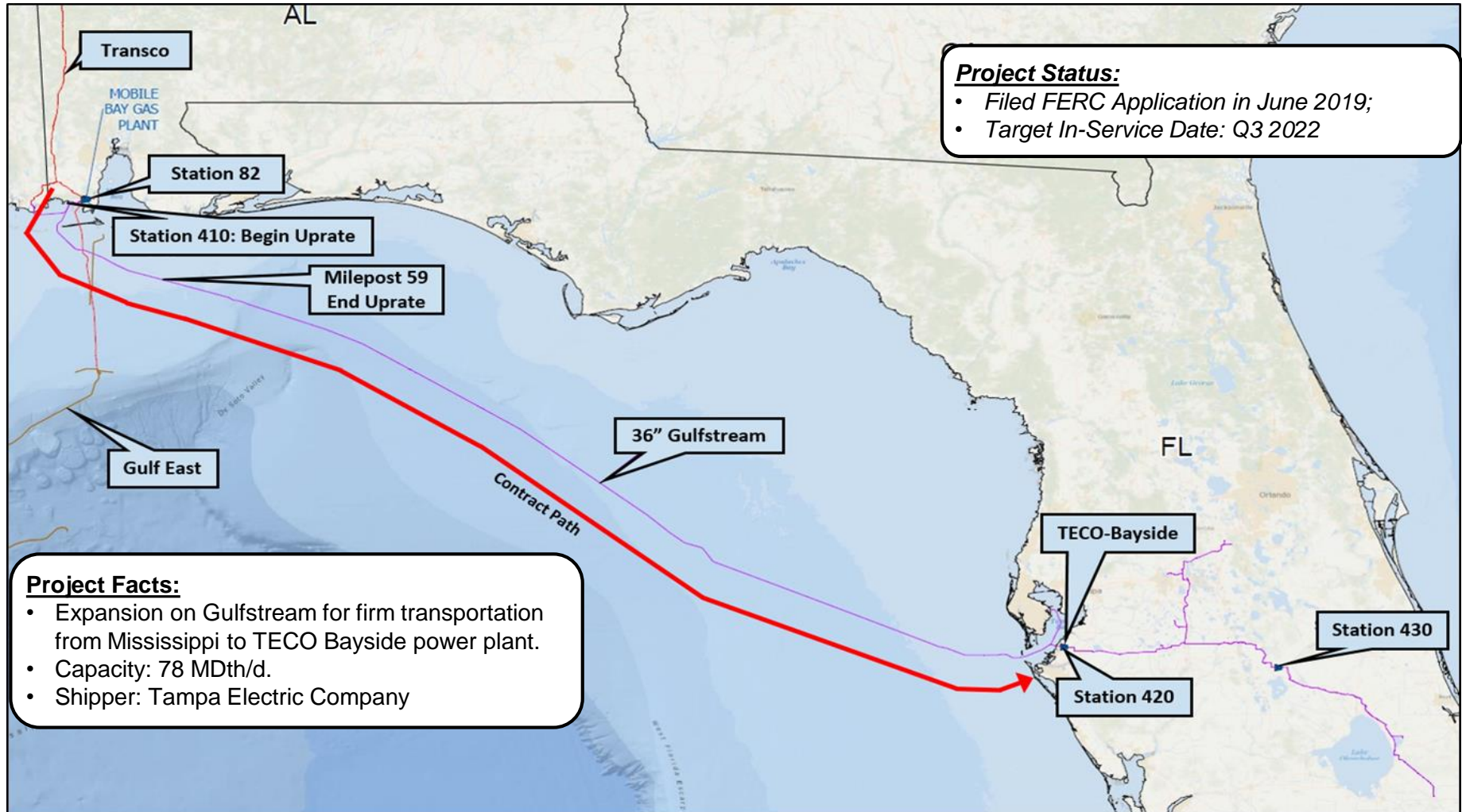


## Project Status:

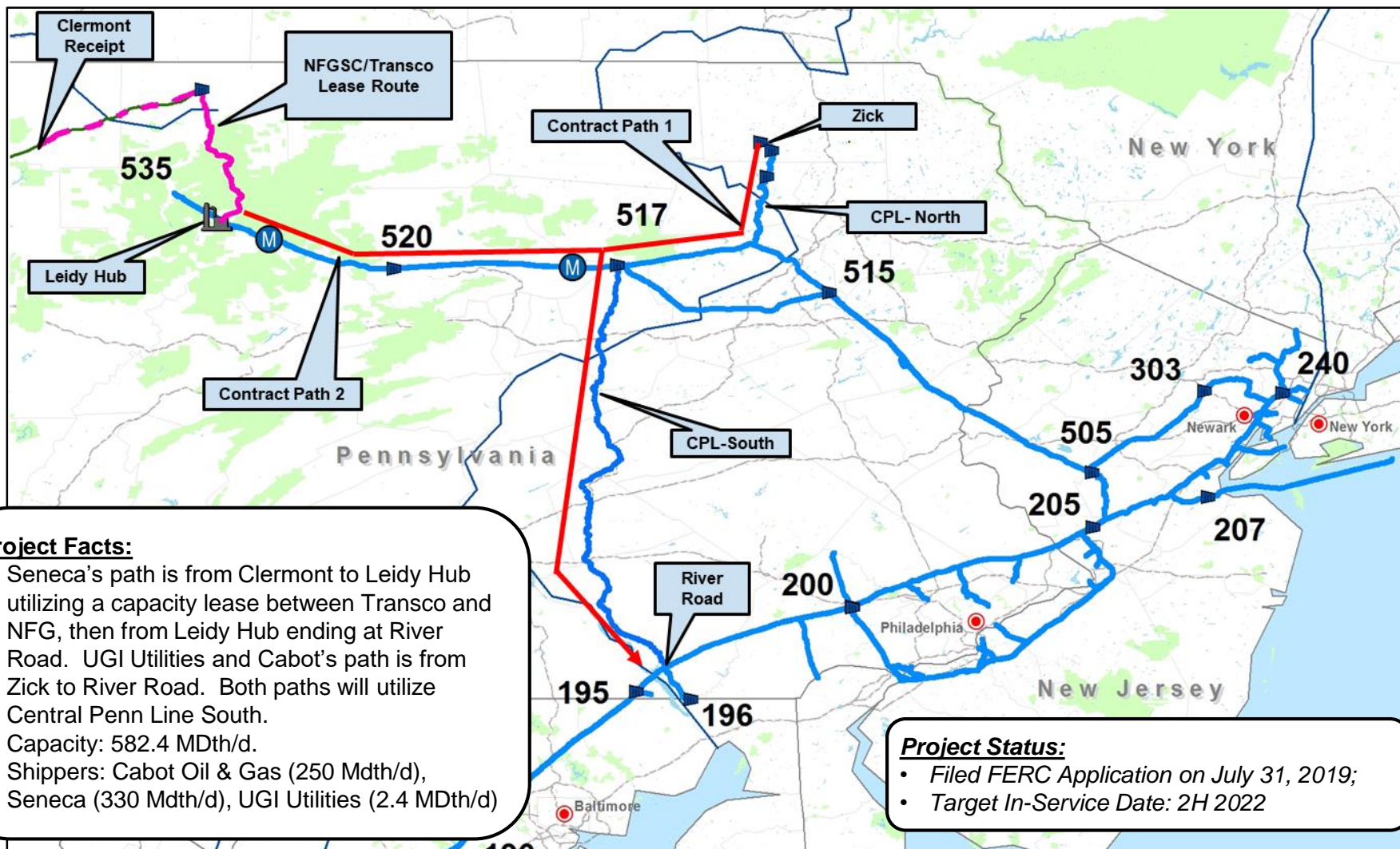
- Received FERC Certificate October 2019;
- Target In-Service Date: Q4 2020



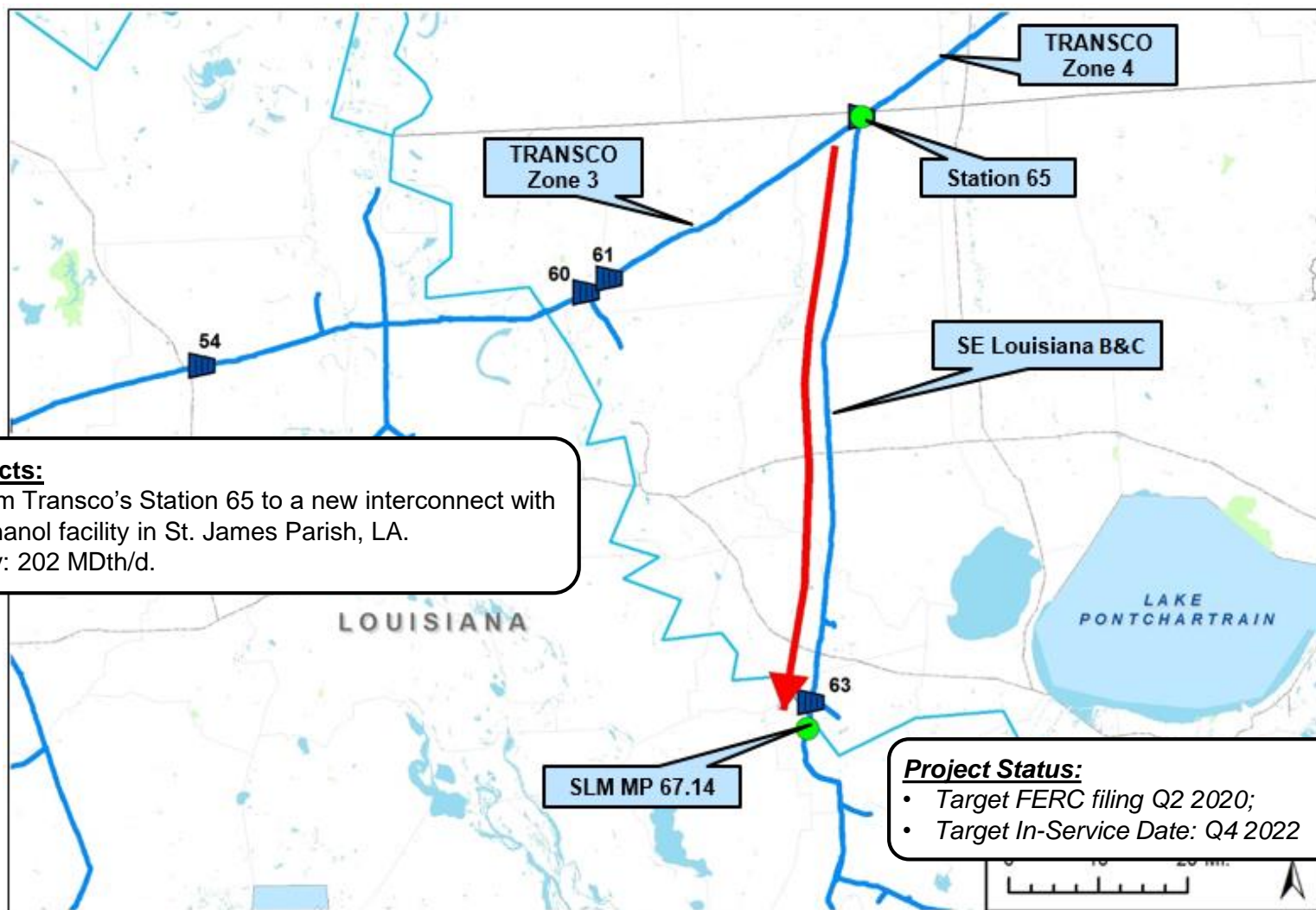
# Gulfstream Phase VI



# Leidy South

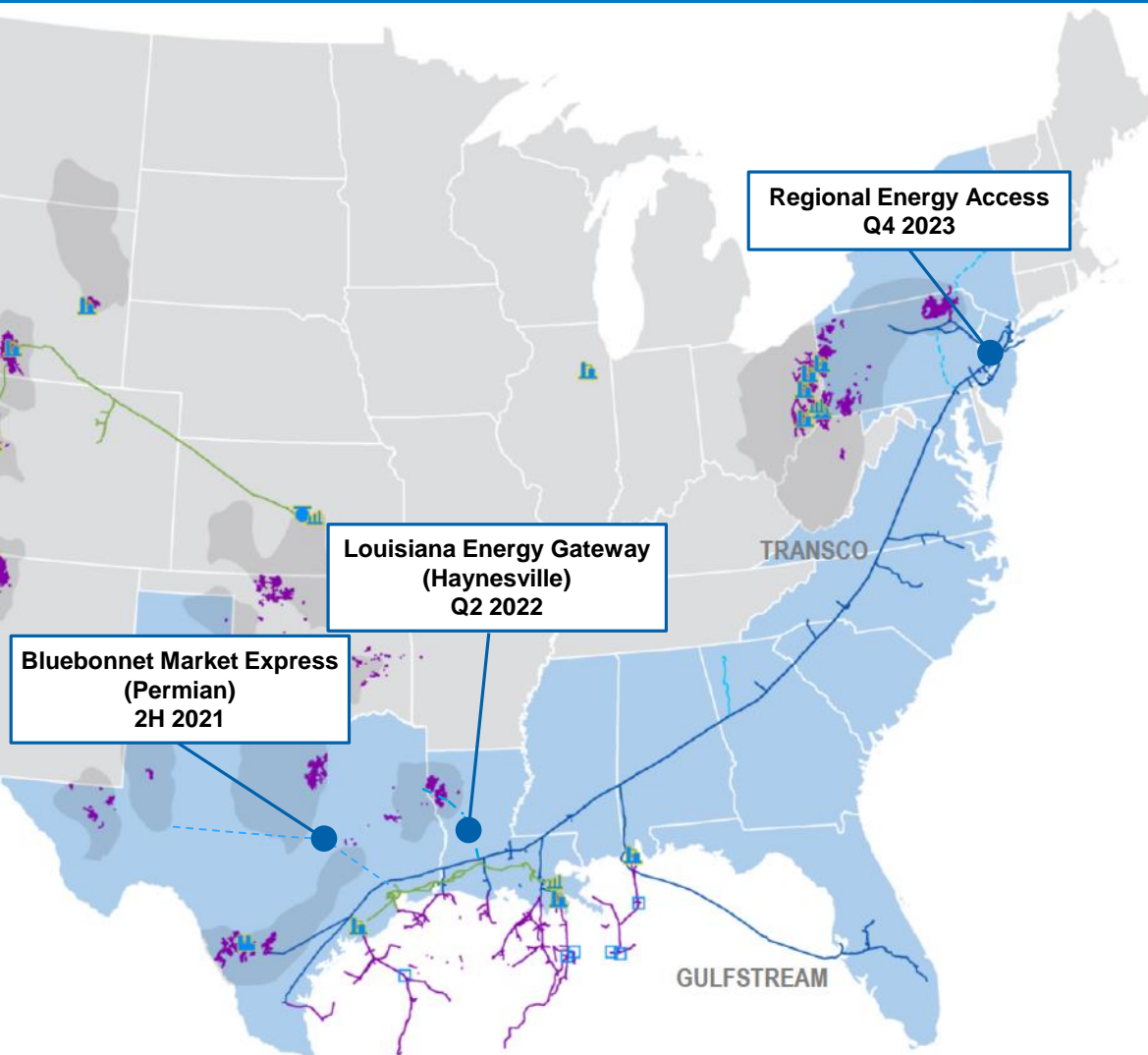


# South Louisiana Market



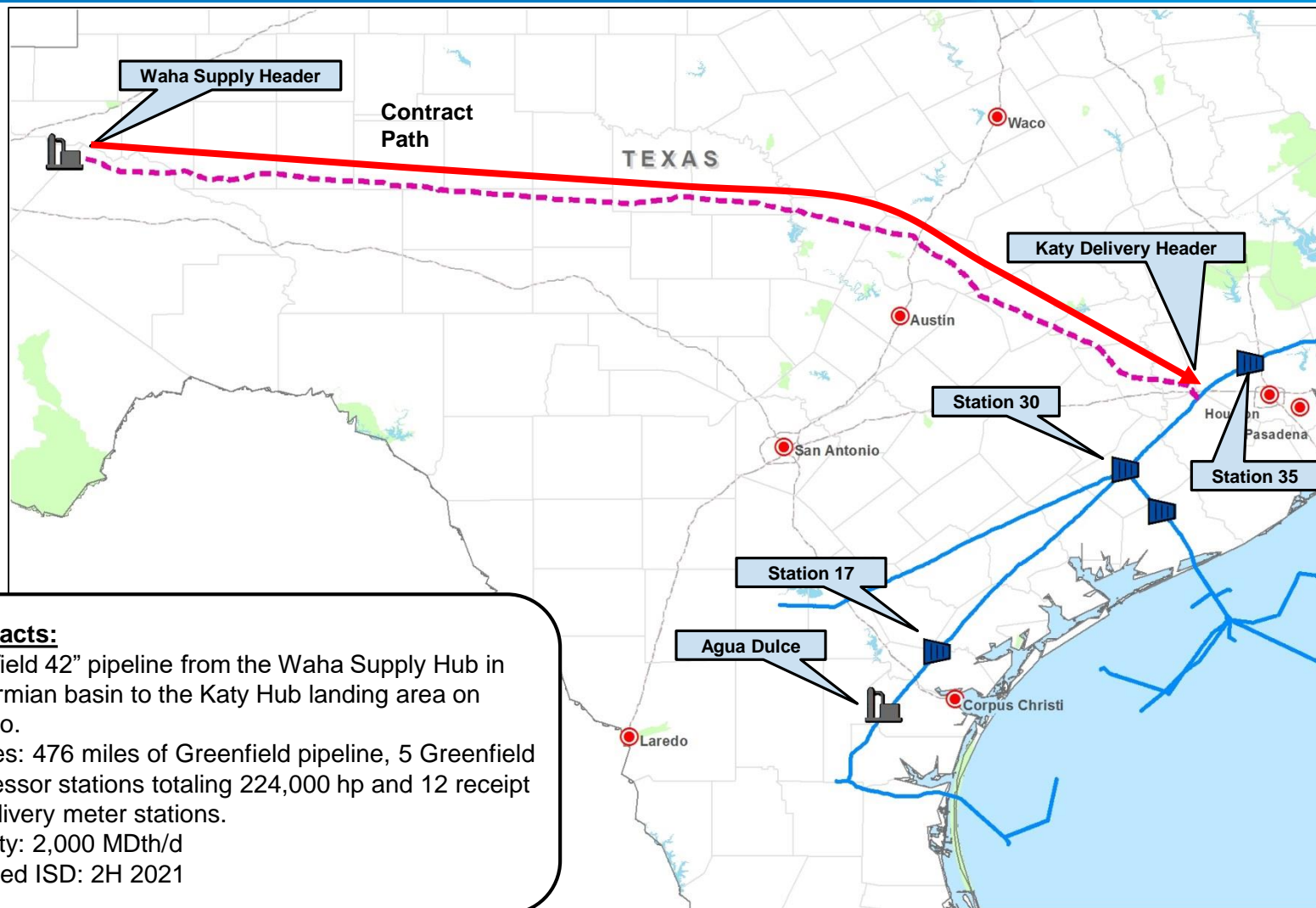


# Expansion Opportunities Across Eastern Interstates



- > **Potential projects area mix of supply push and demand pull**
  - LDC, Power Gen, Industrial, LNG/Mex Exports
- > **Project Development Updates:**
  - Bluebonnet Market Express
    - In negotiations with prospective shipper(s)
  - Louisiana Energy Gateway
    - In negotiations with prospective shipper(s)
  - Regional Energy Access
    - Executing Precedent Agreements with shipper(s)

# Bluebonnet Market Express

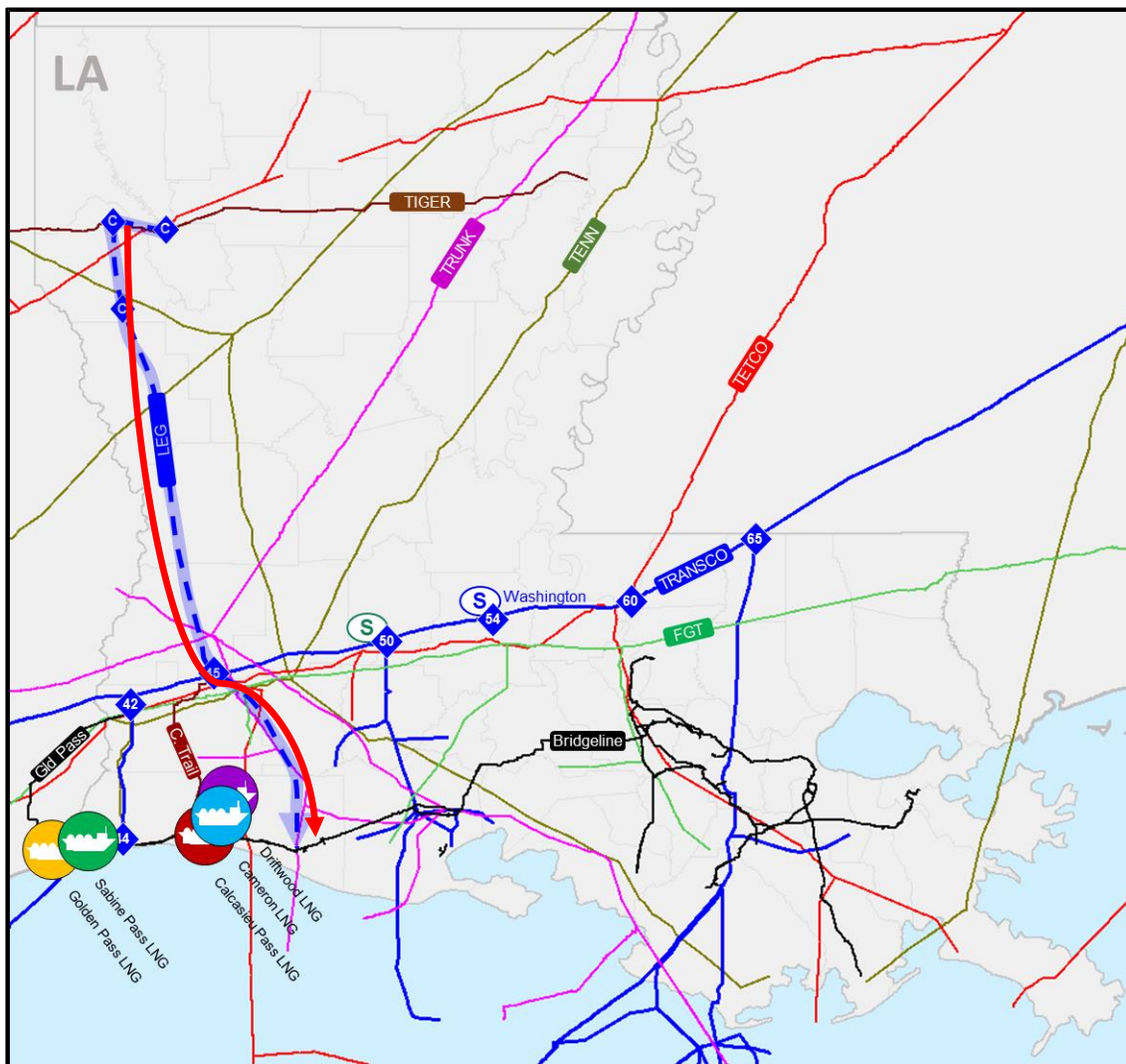




# Louisiana Energy Gateway

**Project Facts:**

- 42" Greenfield pipeline from Haynesville LA Gulf Coast
- Facilities: 170 miles of Greenfield pipeline, 2 Greenfield compressor stations totaling 127,600 hp and 9 receipt / delivery meter stations.
- Capacity: 2,000 MDth/d
- Proposed ISD: Q2 2022



Map of the proposed 200-mile natural gas pipeline route from the Delaware-Maryland border to Trenton, New Jersey. The map shows three proposed paths: Path 1 (purple), Path 2 (red), and Path 3 (blue dashed line). The route starts near the Delaware-Maryland border and ends in Trenton, NJ. Key locations marked include Philadelphia, Camden, and various utility companies like PECO Energy Company and Philadelphia Gas Works. The map also shows existing infrastructure like the Delaware River and various highways.

- Paths from Chapin Meter Station to Station 210 and various delivery points along the mainline and on the Marcus Hook and Trenton Woodbury Laterals.
- Facilities: Pipeline looping, compression addition and meter station additions/ uprates.
- Capacity: 760 to 1,050 MDth/d
- Proposed ISD: Q4 2023

# Thank You

## Questions?

