



PARK AND LOAN SERVICE

Training Module

Park and Loan Service

This module provides necessary information regarding Transco's Park and Loan services.

Transco





PARK AND LOAN

Table of Contents

Important Information – Please Read	3
Introduction	4
Purpose of Park and Loan	4
Park and Loan Locations	4
Park and Loan Contract	5
Park and Loan Availability	5
Request Park and Loan Service	5
Nominating Park and Loan	6
Loan Nomination	7
Loan Payback Nomination	8
Nomination to Park	9
Nomination to Take Away/Un-Park	10
Viewing Park and Loan Balances	11
Park and Loan Rates	12

Important Information – Please Read

The information provided herein is for informational purposes only and does not modify any provision in Transco's FERC Gas Tariff. If a conflict exists between this information and Transco's FERC Gas Tariff, the provisions in Transco's FERC Gas Tariff apply. Transco makes no representation or warranty as to the completeness or accuracy of this information. Transco shall not be liable for any informational errors, incompleteness or delays, or for any actions taken in reliance on this information.

To review the tariff language specific to any topic, go to [Transco's Informational Postings page](#), and select **Tariff** from the left hand navigation menu.

Introduction

Park and Loan (PAL) is an interruptible service which gives customers the flexibility to put gas in Transco's system for later use (Park) or to borrow gas from Transco's system and pay back the volume at a later date (Loan).

Purpose of Park and Loan

- Allows shippers to borrow gas to cover supply losses or market needs and park gas to offset demand decreases
- Utilize this service at times when customers find themselves out of balance on the pipeline
- Utilize PAL to take advantage of short-term price swings on the open market

Park and Loan Locations

There are currently seven Park and Loan locations on Transco's system consisting of one PAL Location in each Zone. PAL location numbers are similar to the major pooling station names in each Zone. The PAL locations are listed in the table below.

Zone	Park and Loan Locations	Location ID
Zone 1	PAL Station 30	1000011
Zone 2	PAL Station 45	1000027
Zone 3	PAL Station 65	1000070
Zone 4	PAL Station 85	1000106
Zone 4A	PAL Station 85 – ZN 4A	9005543
Zone 5	PAL Station 165	1000140
Zone 6	PAL Station 210	1000183

Park and Loan Contract

To be able to Park or Loan gas on Transco, a Park contract and/or a Loan contract must be executed. One can be set up without the other, but it is recommended that both be set up so that the service is readily available when needed. Park and Loan contracts are not transportation contracts. Shippers must transport park or loan volumes on their own transportation contracts (IT or FT) to move gas to or from a PAL location.

To request a Park or Loan contract, contact a Customer Services Representative: Laurie Catlett (713-215-4356) or Suzie Heiser (713-215-4626).

Park and Loan Availability

PAL services are made available as operating conditions permit. For updates on availability of PAL services, go to:

www.1line.williams.com > Transco’s Info Postings > Pipeline Conditions

Request Park and Loan Service

All PAL request(s) must be submitted and approved by a Customer Services Representative (Laurie Catlett or Suzie Heiser). Scheduling of a PAL nomination in 1line will not be allowed without their approval.

Customers who request PAL service should supply the following:

- Whether Park or Loan is being requested
- The daily volume desired
- For which day(s) Park or Loan service is wanted
- When the gas will be taken out of- or paid back to- the pipeline

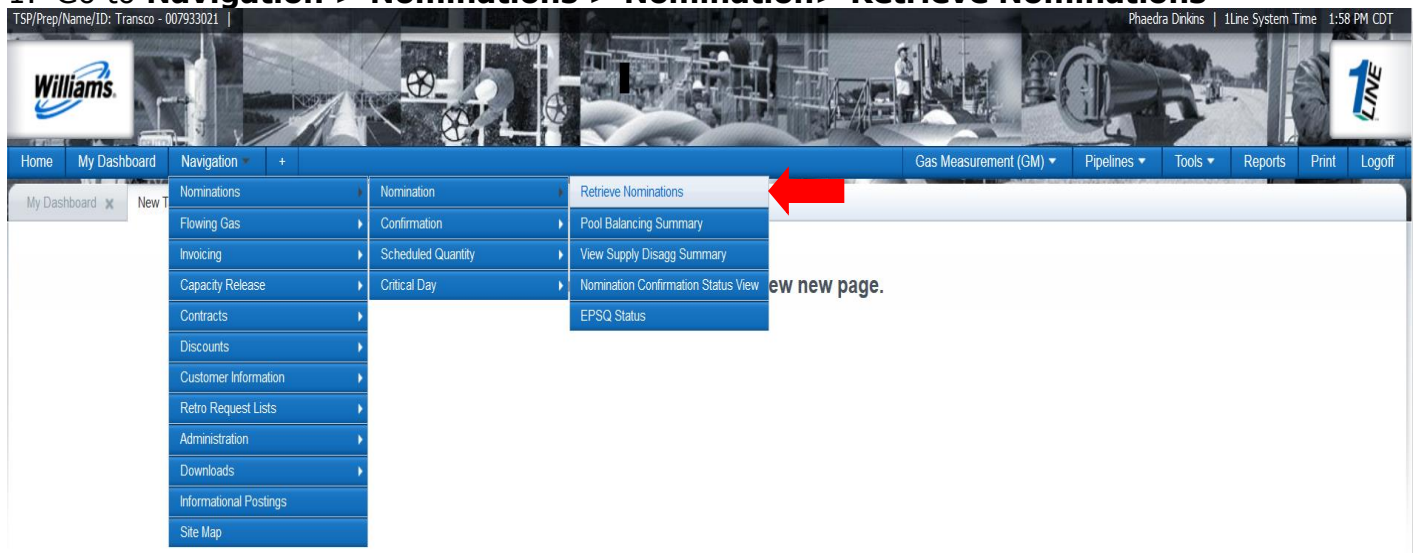
Nominating Park and Loan

Prior to making a PAL nomination, be sure to have a transportation contract, a Park or Loan Contract, and PAL approval from a Customer Services Representative (Laurie Catlett or Suzie Heiser).

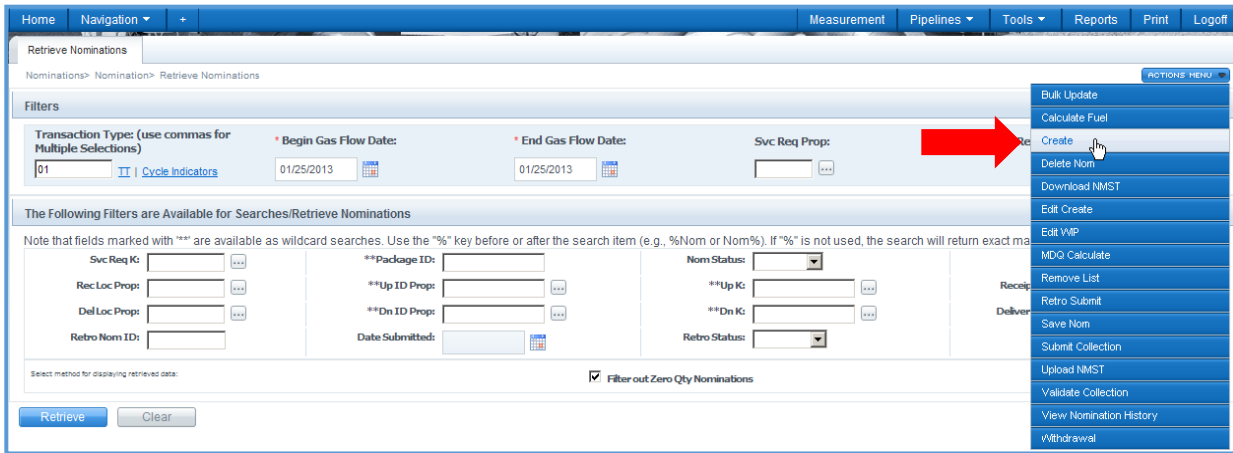
- When nominating Park and Loan, transportation to and from the PAL locations requires use of your own Interruptible (IT) or Firm (FT) Transportation contract.
- The transaction type that will be used for the nomination is a Transaction Type 1.
- The Park or Loan contract will be referenced in the upstream/downstream contract filters within the nomination.
- When nominating to or from a PAL Location, use location IDs associated with the PAL location.
- Park and Loan contracts are subject to a daily allowable park or loan volume within each Zone.
- Transportation contracts are still subject to the MDQ assigned to the contract along with applicable rate/fuel charges.

To Nominate a Park or Loan transaction:

1. Go to **Navigation > Nominations > Nomination > Retrieve Nominations**



2. Select **Actions Menu > Create** to begin creating your nomination

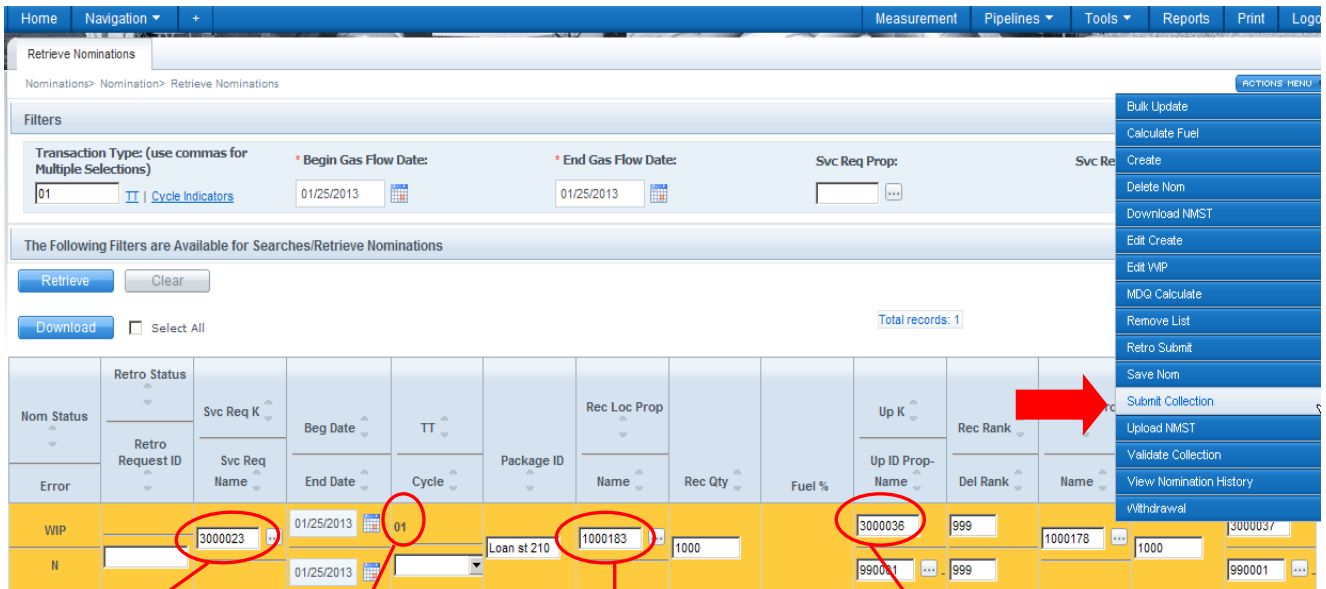


Loan Nomination

When submitting a Loan nomination on your transportation contract, follow these guidelines:

- Receipt location should be the Park and Loan Location ID where gas will be borrowed.
- Delivery location can be any eligible delivery location, with the most common being the Pooling station locations.
- Reference your Loan contract in the Upstream Contract field.

Once the nomination has been filled in, select the transaction row (will highlight in yellow when row is clicked on) and then select **Actions Menu > Submit Collection**.



Service Requester Contract number is your **Transportation Contract number (IT or FT)** and the **Transaction Type is 1**.

In this Loan example, the shipper is using their transportation contract to borrow gas at **PAL Station 210 - Zone 6** (PAL Location ID 1000183), referencing their **Loan contract** in the **Upstream Contract Field**. The gas is being delivered to the shipper's Pooling Station 210.

Loan Payback Nomination

When submitting a nomination to pay back loaned gas on your transportation contract, follow these guidelines:

- Receipt location can be any eligible receipt location, with the most common being the Pooling station locations.
- Delivery location should be the same Park and Loan location where the gas was originally borrowed.
- Reference your Loan contract in the Downstream Contract field.

Note: Park and Loan balances must be taken away or paid back at the same location at which the balance occurred.

Once the nomination has been filled in, select the transaction row (will highlight in yellow when row is clicked on) and then select **Action Menu >Submit Collection**.

Service requester contract number is your **Transportation contract number (IT or FT)** and the **Transaction Type** is **1**.

In this Loan payback example, the shipper is using their transportation contract to pay back loaned gas to **PAL Station 210 - Zone 6** (PAL Location ID 1000183), referencing their **Loan contract** in the **Downstream Contract** field. The gas is coming from the shipper's Pooling Station 210.

Nomination to Park

Use your transportation contract to submit a nomination to Park gas, following these guidelines:

- Receipt location can be any eligible receipt location with the most common being the pooling station locations.
- Delivery location should be the Park and Loan location ID where the gas is to be parked.
- Reference your Park contract in the Downstream Contract field.

Note: Park and Loan balances must be taken away or paid back at the same location at which the balance has occurred.

Once the nomination has been filled in, select the transaction row (will highlight in yellow when row is clicked on) and then select **Action Menu >Submit Collection**.

Nom Status	Retro Status	Svc Req K	Req Date	TT	Package ID	Rec Loc Prop	Up K	Rec Rank	Del Rank	Up ID Prop-Name
WIP		3100023	01/25/2013	01	Park at 210	1000178	3000037	999	1000183	3100036
II			01/25/2013				990001	999		990001

Service Requester Contract number is your **Transportation contract number (IT or FT)** and the **Transaction Type is 1**.

In this Park example, the shipper is using their transportation contract to park gas at **PAL Station 210 - Zone 6** (PAL Location ID 1000183), referencing their **Park contract** in the **Delivery Downstream Contract Field**. The gas is coming from the shipper's Pooling Station 210.

Nomination to Take Away/Un-Park

When submitting a nomination to un-park gas on your transportation contract, the receipt location should be the Park and Loan location ID from which you will take away parked gas from and the delivery location can be any eligible delivery location with the most common being the pooling station locations. Reference your Park contract in the Upstream Contract field.

Note: Park and Loan balances must be taken away or paid back at the same location at which the balance occurred.

Once the nomination has been filled in, select the transaction row (will highlight in yellow when row is clicked on) and then select **Actions Menu >Submit Collection**.

The screenshot shows the Williams nomination system interface. At the top, there's a navigation bar with 'Home', 'Navigation', 'Measurement', 'Pipelines', 'Tools', 'Reports', 'Print', and 'Logout'. Below this is a 'Retrieve Nominations' section with filters for Transaction Type (set to '01'), Begin Gas Flow Date (01/25/2013), and End Gas Flow Date (01/25/2013). A table of nominations is displayed below, with the first row highlighted in yellow. A red arrow points to the 'Submit Collection' option in the 'ACTIONS MENU' dropdown for that row.

Nom Status	Retro Status	Svc Req K	Beg Date	TT	Rec Loc Prop	Up K	Rec Rank	Up ID Prop-Name	Del Rank	Name
WIP		3100023	01/25/2013	01	UnPark at 210	1000183	1000	3100036	999	1000178
II			01/25/2013					990001	999	

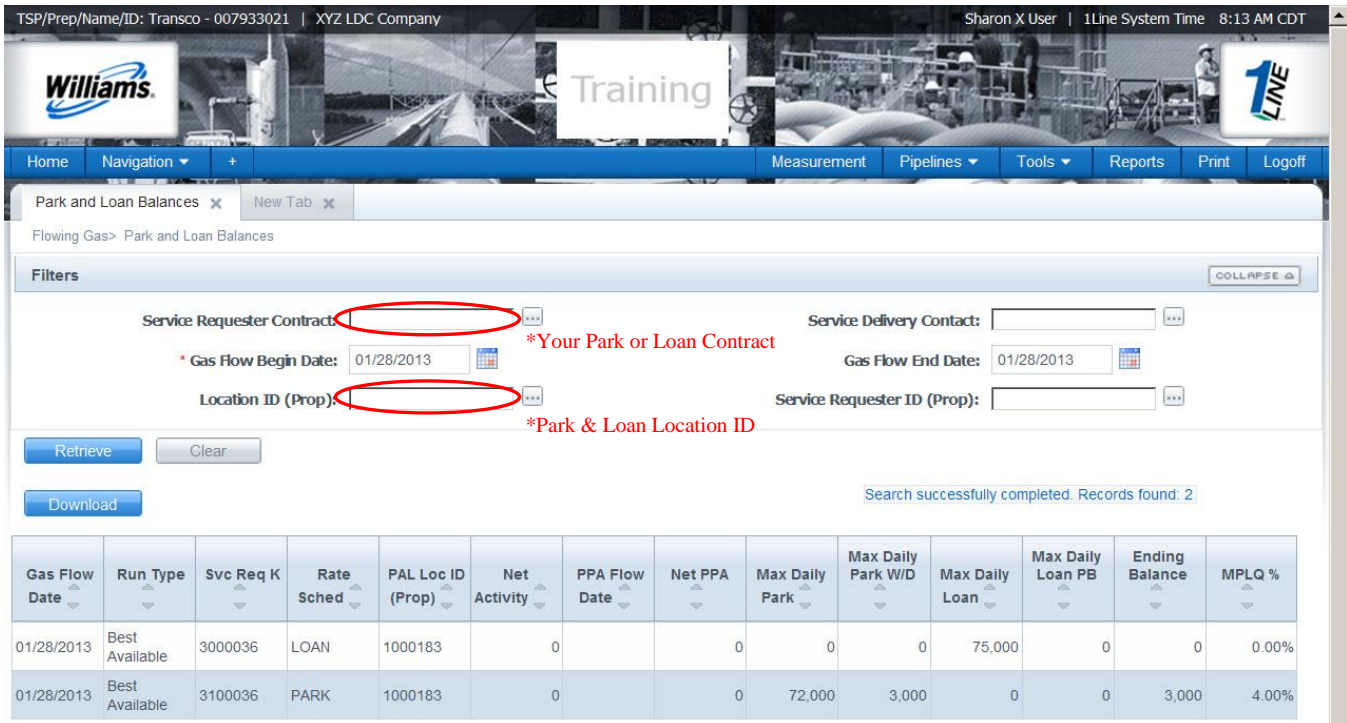
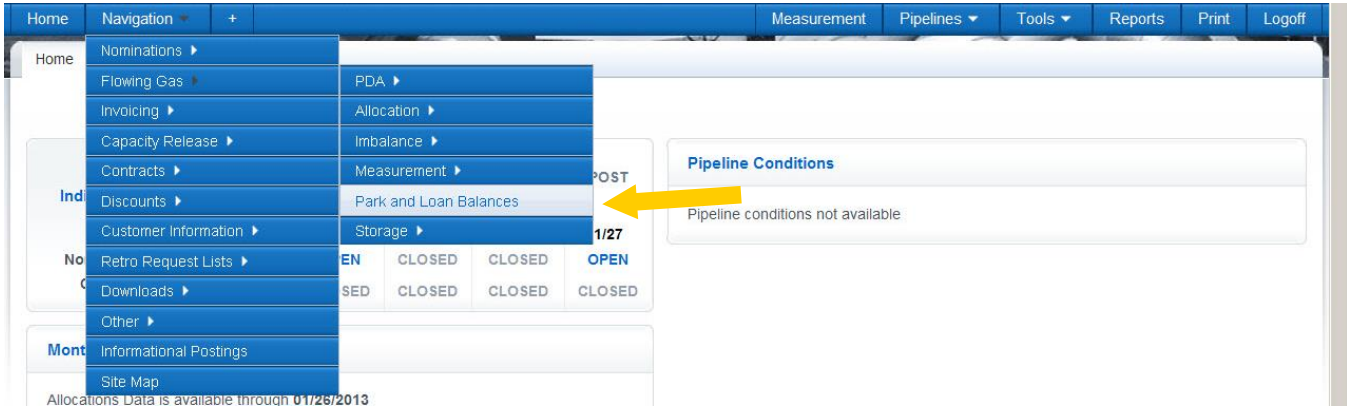
Service Requester Contract number is your **Transportation contract number (IT or FT)** and the **Transaction Type is 1**.

In this Take Away/Un-park example, the shipper is using their transportation contract to take away parked gas at **PAL Station 210 - Zone 6** (PAL Location ID 1000183), referencing their **Park contract** in the **Upstream Contract Field**. The gas is delivered to the shipper's Pooling Station 210.

Viewing Park and Loan Balances

To view your PAL balances:

1. Navigation > Flowing Gas > Park and Loan Balances



- This page allows you to view Park or Loan contract activity. The details show the daily and monthly volumes for a specific date range that is selected.

2. Fill in the fields according to the data you want to view, and then **select Retrieve**.

Park and Loan Rates

- Current maximum rate to Park or Loan is \$0.20 dt/day on the first day of service and \$0.10 dt/day on all consecutive days after. Minimum rate is \$0.0086 dt/day.
- Current Broadcast Discount is \$0.05 dt/day. This is subject to change - Contact your Customer Services Representative (Laurie Catlett or Suzie Heiser) for the latest rate.
- The current PAL daily rates are strictly associated to parking and loaning gas from Transco and do not include Transportation rate charges applied when transporting gas to and from Park and Loan locations.
- Customers are billed for Park and Loan on the daily ending balance.

If you have any questions on Transco's Park and Loan service, please contact your Transportation Services Rep, or your Customer Services Rep (Laurie Catlett 713-215-4356 or Suzie Heiser 713-215-4626).