



2023/2024 Winter Meeting

Charlotte, North Carolina – October 18th @ 9:30 am – 12:00 noon

Newark, New Jersey – October 19th @ 9:30 am – 12:00 noon

Atlanta, Georgia – November 2nd @ 9:30 am – 12:00 noon

Houston, Texas – November 7th @ 1:30 pm – 4:00 pm

Forward-Looking Statements

- > **The reports, filings, and other public announcements of The Williams Companies, Inc. (Williams) may contain or incorporate by reference statements that do not directly or exclusively relate to historical facts. Such statements are “forward-looking statements” within the meaning of Section 27A of the Securities Act of 1933, as amended (Securities Act), and Section 21E of the Securities Exchange Act of 1934, as amended (Exchange Act). These forward-looking statements relate to anticipated financial performance, management’s plans and objectives for future operations, business prospects, outcome of regulatory proceedings, market conditions, and other matters. We make these forward-looking statements in reliance on the safe harbor protections provided under the Private Securities Litigation Reform Act of 1995.**
- > **All statements, other than statements of historical facts, included in this report that address activities, events, or developments that we expect, believe, or anticipate will exist or may occur in the future, are forward-looking statements. Forward-looking statements can be identified by various forms of words such as “anticipates,” “believes,” “seeks,” “could,” “may,” “should,” “continues,” “estimates,” “expects,” “forecasts,” “intends,” “might,” “goals,” “objectives,” “targets,” “planned,” “potential,” “projects,” “scheduled,” “will,” “assumes,” “guidance,” “outlook,” “in-service date,” or other similar expressions. These forward-looking statements are based on management’s beliefs and assumptions and on information currently available to management and include, among others, statements regarding:**
 - Levels of dividends to Williams stockholders;
 - Future credit ratings of Williams and its affiliates;
 - Amounts and nature of future capital expenditures;
 - Expansion and growth of our business and operations;
 - Expected in-service dates for capital projects;
 - Financial condition and liquidity;
 - Business strategy;
 - Cash flow from operations or results of operations;
 - Seasonality of certain business components;
 - Natural gas, natural gas liquids and crude oil prices, supply, and demand;
 - Demand for our services;

Forward-Looking Statements (cont'd)

- > **Forward-looking statements are based on numerous assumptions, uncertainties, and risks that could cause future events or results to be materially different from those stated or implied in this report. Many of the factors that will determine these results are beyond our ability to control or predict. Specific factors that could cause actual results to differ from results contemplated by the forward-looking statements include, among others, the following:**
 - Availability of supplies, market demand, and volatility of prices;
 - Development and rate of adoption of alternative energy sources;
 - The impact of existing and future laws and regulations, the regulatory environment, environmental matters, and litigation, as well as our ability to obtain necessary permits and approvals, and achieve favorable rate proceeding outcomes;
 - Our exposure to the credit risk of our customers and counterparties;
 - Our ability to acquire new businesses and assets and successfully integrate those operations and assets into existing businesses as well as successfully expand our facilities, and to consummate asset sales on acceptable terms;
 - Whether we are able to successfully identify, evaluate, and timely execute our capital projects and investment opportunities;
 - The strength and financial resources of our competitors and the effects of competition;
 - The amount of cash distributions from and capital requirements of our investments and joint ventures in which we participate;
 - Whether we will be able to effectively execute our financing plan;
 - Increasing scrutiny and changing expectations from stakeholders with respect to our environmental, social, and governance practices;
 - The physical and financial risks associated with climate change;
 - The impacts of operational and developmental hazards and unforeseen interruptions;
 - The risks resulting from outbreaks or other public health crises, including COVID-19;
 - Risks associated with weather and natural phenomena, including climate conditions and physical damage to our facilities;
 - Acts of terrorism, cybersecurity incidents, and related disruptions;
 - Our costs and funding obligations for defined benefit pension plans and other postretirement benefit plans;
 - Changes in maintenance and construction costs, as well as our ability to obtain sufficient construction-related inputs, including skilled labor;
 - Inflation, interest rates, and general economic conditions (including future disruptions and volatility in the global credit markets and the impact of these events on customers and suppliers);
 - Risks related to financing, including restrictions stemming from debt agreements, future changes in credit ratings as determined by nationally recognized credit rating agencies, and the availability and cost of capital;

Forward-Looking Statements (cont'd)

- The ability of the members of the Organization of Petroleum Exporting Countries and other oil exporting nations to agree to and maintain oil price and production controls and the impact on domestic production;
 - Changes in the current geopolitical situation, including the Russian invasion of Ukraine;
 - Changes in U.S. governmental administration and policies;
 - Whether we are able to pay current and expected levels of dividends;
 - Additional risks described in our filings with the Securities and Exchange Commission (SEC).
- > **Given the uncertainties and risk factors that could cause our actual results to differ materially from those contained in any forward-looking statement, we caution investors not to unduly rely on our forward-looking statements. We disclaim any obligations to, and do not intend to, update the above list or announce publicly the result of any revisions to any of the forward-looking statements to reflect future events or developments.**
- > **In addition to causing our actual results to differ, the factors listed above and referred to below may cause our intentions to change from those statements of intention set forth in this report. Such changes in our intentions may also cause our results to differ. We may change our intentions, at any time and without notice, based upon changes in such factors, our assumptions, or otherwise.**
- > **Because forward-looking statements involve risks and uncertainties, we caution that there are important factors, in addition to those listed above, that may cause actual results to differ materially from those contained in the forward-looking statements. For a detailed discussion of those factors, see Part I, Item 1A. Risk Factors in our Annual Report on Form 10-K for the year ended December 31, 2022, as filed with the SEC on February 27, 2023.**

Agenda

- **Welcome**
 - Safety Moment

- **Pipeline Control Updates**
 - Organization
 - Upcoming Maintenance Activity
 - Winter Weather Outlook
 - Operational Update/Winter Storm Elliott

- **Commercial Updates**
 - Commercial Services
 - Commercial Technology
 - Market & Expansion Projects

- **Q&A**



WE MAKE CLEAN ENERGY HAPPEN®

Safety Moment – Suicide Prevention

SAFETY MOMENT: SUICIDE PREVENTION

Over **48,000** people died by suicide in 2021

1 death every **11** minutes

Many adults think about suicide or attempt suicide

12.3 million Seriously thought about suicide

3.5 million Made a plan for suicide

1.7 million Attempted suicide

If you or someone you know is in crisis, please contact the



988 Suicide and Crisis Lifeline

- Call or text 988
- Chat at [988lifeline.org](https://www.988lifeline.org)


- Last year, the United States experienced the highest rate of deaths by suicide ever recorded.
- According to the Centers for Disease Control and Prevention, 49,449 people made the decision to end their own lives – a 2.6% increase over 2021 – and there were nearly 1.7 million suicide attempts.
- Some within the Williams family made that tragic decision.
- National Suicide & Crisis Hotline 988 - We can all help prevent suicide. The 988 Lifeline provides 24/7, free and confidential support for people in distress, prevention and crisis resources for you or your loved ones, and best practices for professionals in the United States.

WARNING SIGNS OF SUICIDE:

The behaviors listed below may be some of the signs that someone is thinking about suicide.

TALKING ABOUT:	FEELING:
 <ul style="list-style-type: none">▷ Wanting to die▷ Great guilt or shame▷ Being a burden to others	 <ul style="list-style-type: none">▷ Empty, hopeless, trapped, or having no reason to live▷ Extremely sad, more anxious, agitated, or full of rage▷ Unbearable emotional or physical pain



CHANGING BEHAVIOR, SUCH AS:



- ▷ Making a plan or researching ways to die
- ▷ Taking dangerous risks such as driving extremely fast
- ▷ Displaying extreme mood swings
- ▷ Eating or sleeping more or less
- ▷ Using drugs or alcohol more often
- ▷ Withdrawing from friends, saying goodbye, giving away important items, or making a will

If these warning signs apply to you or someone you know, get help as soon as possible, particularly if the behavior is new or has increased recently.

988 Suicide & Crisis Lifeline Call or text 988 Chat at 988lifeline.org	Crisis Text Line Text "HELLO" to 741741
---	---

  National Institute of Mental Health

www.nimh.nih.gov/suicideprevention

NIMH Identifier No. OM 22-4316

SAFETY MOMENT: SUICIDE PREVENTION

Take Action

Anyone can take action to prevent suicide. Taking any of these simple steps could make the difference.

Even *you* could **Be The One To:**

- **Ask:** Ask the question, “Are you thinking about suicide?”
- **Be There:** Increase their connectedness and limit isolation
- **Keep Them Safe:** Reduce their access to highly lethal means
- **Help Them Connect:** Connect them with ongoing support and resources
- **Follow Up:** Leave a message, send a text, or give them a call

Resources:

Suicide & Crisis Lifeline – <https://988lifeline.org>

American Foundation for Suicide Prevention – <https://afsp.org>

#Be The 1 To – <https://www.bethe1to.com>

National Institute of Mental Health – <https://nimh.nih.gov>

Centers for Disease Control and Prevention – <https://cdc.gov>

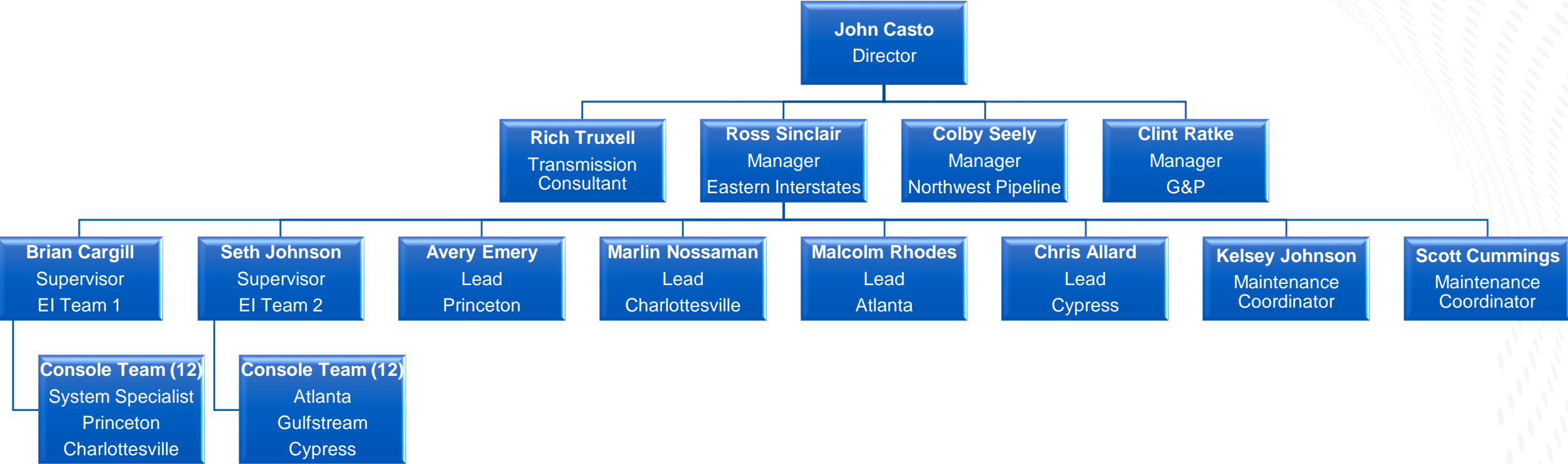




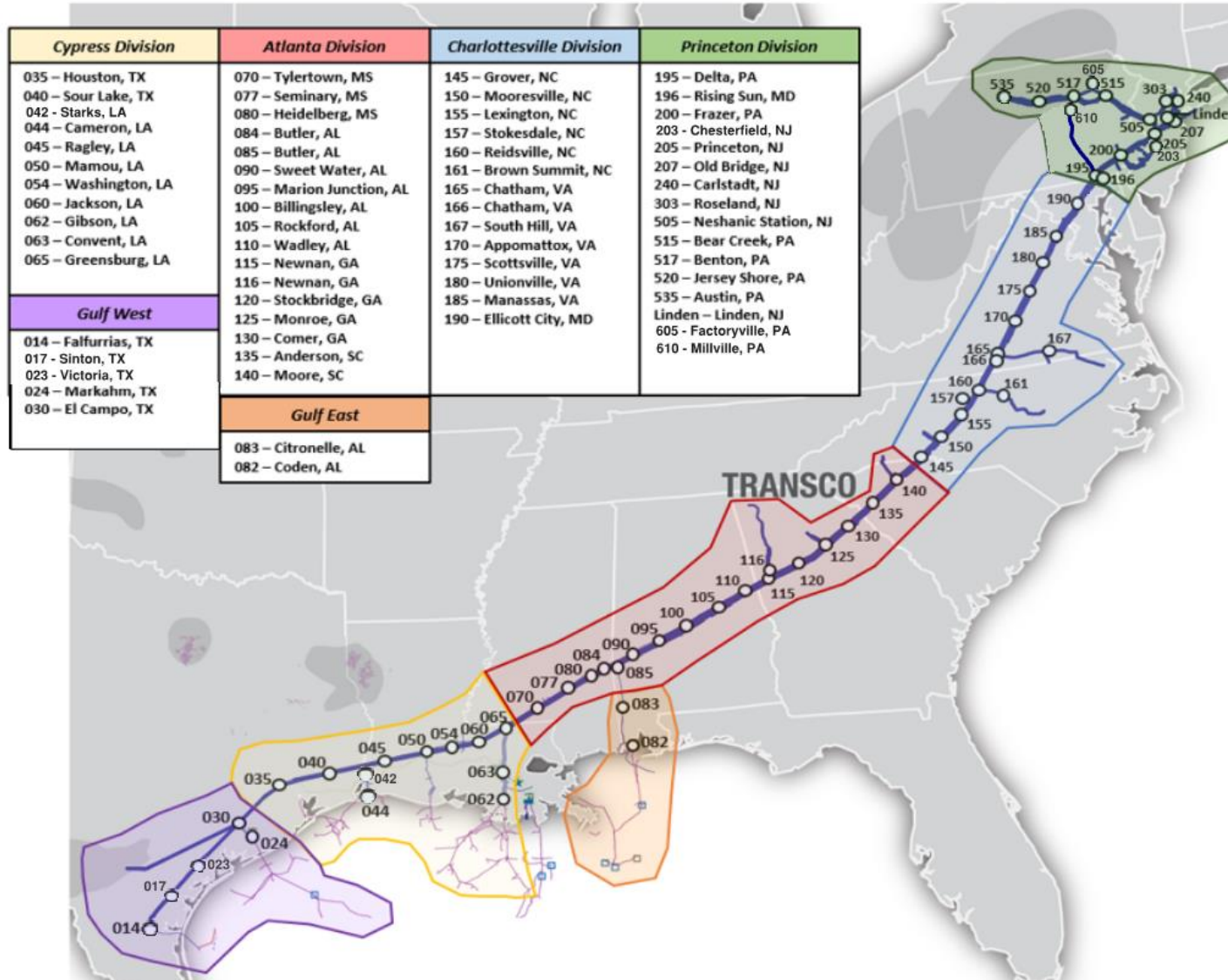
WE MAKE CLEAN ENERGY HAPPEN®

Pipeline Control Updates

Pipeline Control Organization



Transco System Overview

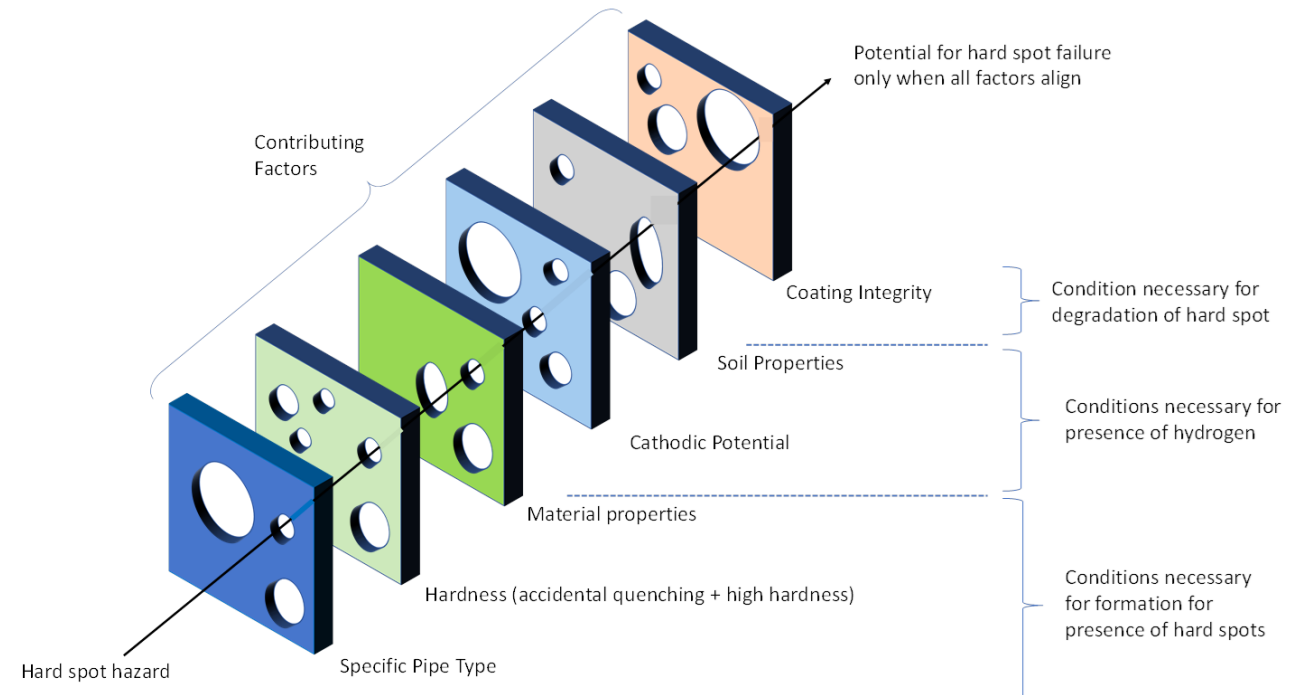


2024 Anticipated Construction & Maintenance

- Standard planned and unplanned maintenance outages, maintaining facilities, main units, and storage facilities
- Regulatory / Compliance driven maintenance activities, ensuring the Eastern Interstates system is safe
 - Pipeline Inspections
 - Anomaly Investigations
 - Hard Spot Remediation
- Construction activities, improving the facility and pipeline infrastructure network to increase reliability
 - Environmental Reduction Program
 - Growth/Expansion Efforts

Hard Spot Background

- Hard spot susceptible pipe an industry-wide concern not unique to Transco
- Williams has been taking a proactive approach to identify and mitigate hard spot risks through its standard maintenance program.
- Hard spots are a pipeline defect created during original manufacturing
 - Hard spots are considered stable unless acted on by coincident environmental factors
 - Coating degradation
 - Atomic hydrogen can be generated from elevated cathodic protection



**Credit: ADV Integrity*

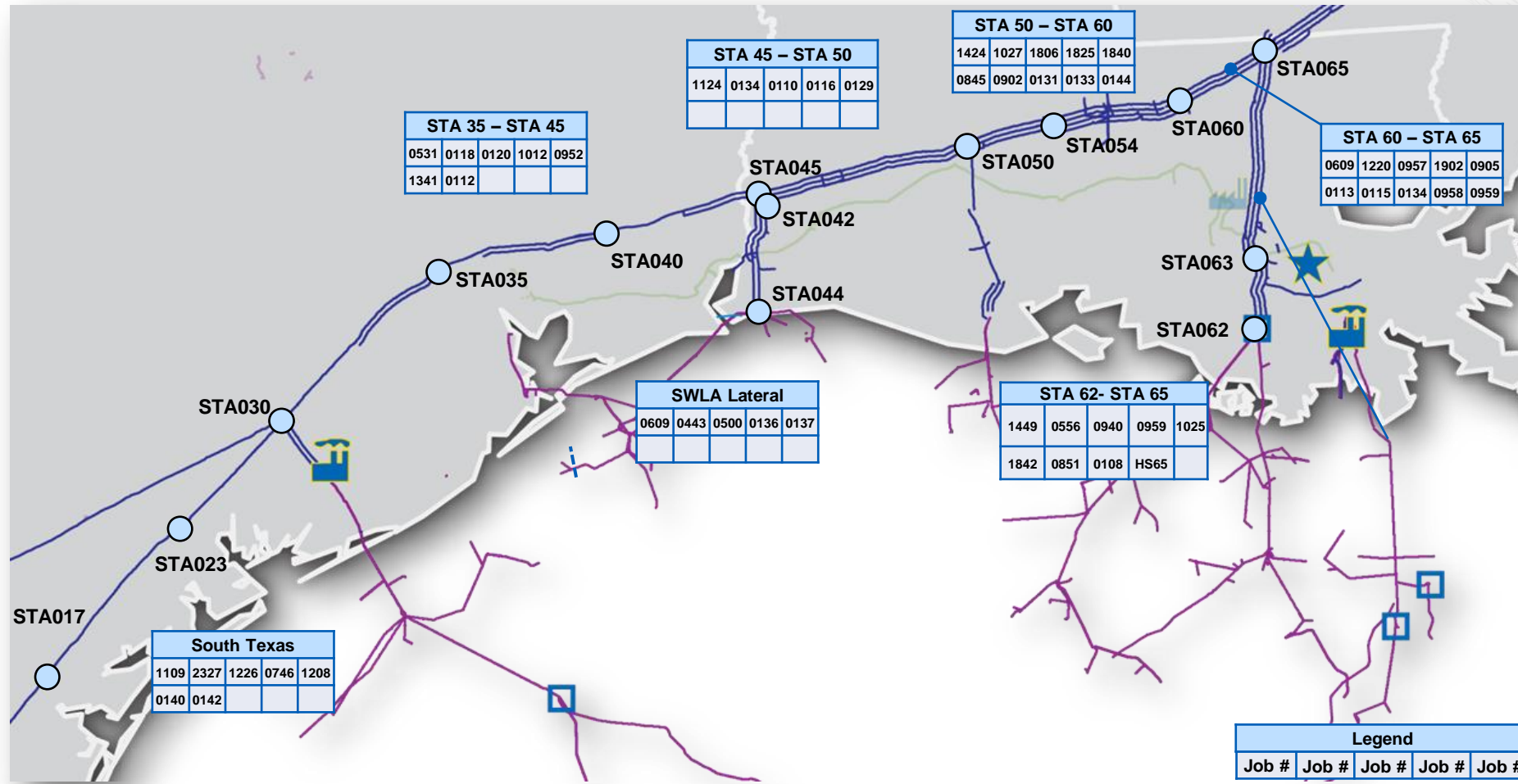
Hard Spot Program

- Hard Spot projects have and will continue to be executed as part of our normal Integrity Maintenance Execution Program
- The Hard Spot Program is comprised of the following efforts:
 - Evaluation of Hard Spot Susceptible piping along our Transco assets, based on company and industry history
 - Development of a Hard Spot Risk model to prioritize HS assessments, that will be periodically updated with new Williams and industry learnings
 - Continuous communication and coordination with PHMSA on new findings, program progress/strategy, and on upcoming guidance and regulations
 - Progressing understanding of the Hard Spot threat through a multitude of industry studies and laboratory testing

System Impacts

- Depending on location and system utilization, a reduction in scheduled volume may be necessary until repairs are made
 - If flows through the segment of affected pipe are low enough, impacts may not be necessary.
- May require a station outage to allow crews to safely excavate, inspect, and repair
- Possible reduction in operating pressure to inspect, recoat and repair
- Any necessary scheduling reductions will be posted as a critical notice

Texas & Louisiana Construction & Maintenance



Texas & Louisiana Construction & Maintenance

Preliminary Job Number	Start	Finish	Location	Zone	Maintenance Activity	Anticipated Impact	Meter No.	Meter Name	1Line Nominatable Location ID	Revision Date	Revision Notes
230724-1109			Mainline A (Station 17 to MLV 20A5) EMAT Baseline Assessment (No Hist)	1	Pipeline Inspection	No meter Impact Anticipated at this time					New Job Added
230724-2327			Mainline A (MLV 20A5 to Station 30) EMAT Baseline	1	Pipeline Inspection	Potential Meter Impact	4400	Victoria Dupont	1006391		New Job Added
210627-1226			2022 Mainline A (MLV T1218 to Station 17) MFL+GEO Digs	1	Anomaly Investigation Placeholder	Potential Meter Outage	3668/14668, 3676, 3515/4515	Agua Dulce, Whistler, Banquete	9010418, 9011900, 9011580/9011581		New Job Added
221011-0746			Mainline A (T1218 to Station 17) EMAT Digs (ECA & EMAT Baseline)	1	Anomaly Investigation Placeholder	Potential Meter Outage	3668/14668, 3676, 3515/4515	Agua Dulce, Whistler, Banquete	9010418, 9011900, 9011580/9011581		New Job Added
221103-1208			McMullen Lateral A (Marshall Field to Station 30) non-HCA Segment Probabilistic Digs	1	Anomaly Investigation Placeholder	Potential Meter Outage	1652, 4576, 1744, 3643/4643, 1644	Miss V/Cooley 1, Nursery Power Plant, Mission Valley 1, Eagle Plant, Earl Hollimon	1000308, 1007418, 9003120, 9006902/9006903, 1001208		New Job Added
230724-0140			MLV T1218 to Station 17 GEO/MFL/CMFL/HS Digs	1	Anomaly Investigation Placeholder	Potential Meter Outage	3668/14668, 3676, 3515/4515	Agua Dulce, Whistler, Banquete	9010418, 9011900, 9011580/9011581		New Job Added
230724-0142			MLV T1218 to Station 17 EMAT Digs	1	Anomaly Investigation Placeholder	Potential Meter Outage	3668/14668, 3676, 3515/4515	Agua Dulce, Whistler, Banquete	9010418, 9011900, 9011580/9011581		New Job Added
230629-0531			Markham NGPL (Station 30 to T923) GEO/MFL Baseline	1	Pipeline Inspection	No meter Impact Anticipated at this time					New Job Added

Texas & Louisiana Construction & Maintenance

Preliminary Job Number	Start	Finish	Location	Zone	Maintenance Activity	Anticipated Impact	Meter No.	Meter Name	1Line Nominatable Location ID	Revision Date	Revision Notes
230629-0609			N High Island B (LW223 to Station 44) GEO/MFL/CMFL Reassessment	2	Pipeline Inspection	No meter Impact Anticipated at this time					New Job Added
230630-0443			SW Louisiana Lateral A (Ballard Plant to LW8) GEO/MFL/CMFL Reassessment	2	Pipeline Inspection	No meter Impact Anticipated at this time					New Job Added
230630-0500			SW Louisiana Lateral A (Johnson's Bayou to Ballard Plant) GEO/MFL/CMFL Baseline	2	Pipeline Inspection	No meter Impact Anticipated at this time					New Job Added
221103-1151			Mainline C (LW811 to Station 45) non-HCA Segment Probabilistic Digs	2	Anomaly Investigation Placeholder	Potential Meter Outage	3597, 4449	Golden Pass SW, Sabine Gill Gsu	9004344, 1007153		New Job Added
230724-0118			Mainline C (LW811 to Station 45) GEO/MFL Digs	2	Anomaly Investigation Placeholder	Potential Meter Outage	3597, 4449	Golden Pass SW, Sabine Gill Gsu	9004344, 1007153		New Job Added
230724-0120			Mainline C (LW811 to Station 45) SCCDA Digs	2	Anomaly Investigation Placeholder	Potential Meter Outage	3597, 4449	Golden Pass SW, Sabine Gill Gsu	9004344, 1007153		New Job Added
230724-0136			N High Island C (LW410 to Station 44) SCCDA Digs	2	Anomaly Investigation Placeholder	Potential Meter Impact	4662	Lighthouse Road	9009310		New Job Added
230724-0137			North High Island C (Sabine River to LW1224) GEO/MFL Digs	2	Anomaly Investigation Placeholder	No meter Impact Anticipated at this time					New Job Added
230804-1012			Mainline B (MLV 40B20 to Station 45) HS Reanalysis Digs	2	Anomaly Investigation Placeholder	Potential Meter Outage	3675	Jasper	9011000		New Job Added
220620-0952			Mainline B (T958 to Station 35) SCCDA Digs	2	Anomaly Investigation Placeholder	No meter Impact Anticipated at this time					New Job Added
220622-1341			Mainline B (Station 35 to T958) HCA Segment GEO/MFL Digs	2	Anomaly Investigation Placeholder	No meter Impact Anticipated at this time					New Job Added
230724-0112			Mainline B (T958 to Station 35) SCCDA Digs	2	Anomaly Investigation Placeholder	No meter Impact Anticipated at this time					New Job Added

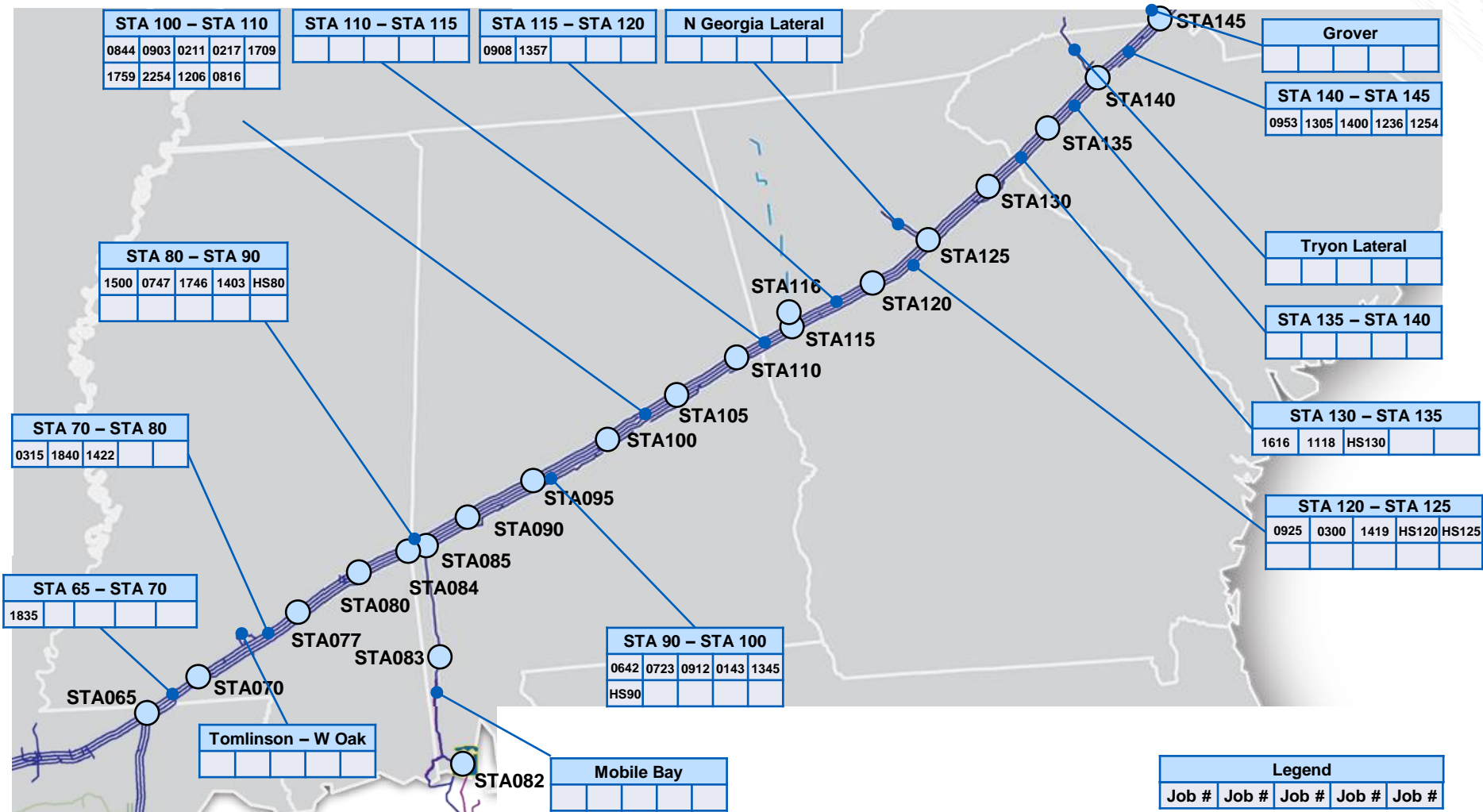
Texas & Louisiana Construction & Maintenance

Preliminary Job Number	Start	Finish	Location	Zone	Maintenance Activity	Anticipated Impact	Meter No.	Meter Name	1Line Nominatable Location ID	Revision Date	Revision Notes
200512-1124			Mainline B (Station 45 to Station 50) EMAT Run	3	Pipeline Inspection	Potential Meter Impact	2856	Duralde	1005046		New Job Added
221216-1449			SE Louisiana Lateral A (Mississippi River to Station 65) HS Baseline	3	Pipeline Inspection	Potential Meter Impact	3270, 7323	Sonat Livingston, Walker	1006169, 1003502		New Job Added
230628-0609			Mainline C (Mississippi River to Station 65) GEO/MFL Reassessment	3	Pipeline Inspection	No meter Impact Anticipated at this time					New Job Added
230628-1220			Mainline A (Mississippi River to Amite River) GEO/MFL Reassessment	3	Pipeline Inspection	No meter Impact Anticipated at this time					New Job Added
230629-0556			SE Louisiana Lateral B (Station 63 to Station 65) GEO/MFL/CMFL Reassessment	3	Pipeline Inspection	Potential Meter Impact	4636	Sunshine	9007402		New Job Added
230724-0940			SE Louisiana Lateral A (MLV 62A12 to Mississippi River) HS Baseline	3	Pipeline Inspection	Potential Meter impact	3590	Larose	9002041		New Job Added
230724-0957			Mainline B (Station 65 to Station 70) HS Baseline	3	Pipeline Inspection	No meter Impact Anticipated at this time					New Job Added
230724-0959			SE Louisiana Lateral A (Station 62 to MLV 62A11) HS Baseline	3	Pipeline Inspection	No meter Impact Anticipated at this time					New Job Added
220629-1025			SE Louisiana Lateral A (Station 62 to MLV 62A11) HS Baseline	3	Anomaly Investigation Placeholder	No meter Impact Anticipated at this time					New Job Added
220629-1027			Mainline A (Atchafalaya River to Mississippi River) GEO/MFL Digs	3	Anomaly Investigation Placeholder	No meter Impact Anticipated at this time					New Job Added
220629-1424			Raceland Lateral A (LE139 to LE78) GEO/MFL Digs	3	Anomaly Investigation Placeholder	Potential Meter Impact	4518, 2923, 2922, 2863, 4654, 2123/4501, 2919, 2148/4611	Raceland, Marcello Meter, Melodia, Laurel Valley, Des Allemands, Gauche, Couba	1006952, 9012443, 9011880, 1005264, 9007904, 1000191/1003801, 9010758, 9000920/9004662		New Job Added
220629-1806			Mainline D (Atchafalaya River to Mississippi River) SCCDA Digs	3	Anomaly Investigation Placeholder	No meter Impact Anticipated at this time					New Job Added
220629-1825			Mainline D (Mississippi River to Station 60) SCCDA Digs	3	Anomaly Investigation Placeholder	No meter Impact Anticipated at this time					New Job Added
220629-1840			Mainline D (Station 54 to Atchafalaya River) SCCDA Digs	3	Anomaly Investigation Placeholder	No meter Impact Anticipated at this time					New Job Added
220629-1842			SE Louisiana Lateral D (Ship Shoal 70 to Station 62) SCCDA Digs	3	Anomaly Investigation Placeholder	No meter Impact Anticipated at this time					New Job Added
220629-1902			Mainline D (Mississippi River to Station 60) GEO/MFL Digs	3	Anomaly Investigation Placeholder	No meter Impact Anticipated at this time					New Job Added
220630-0845			Mainline D (Station 54 to Atchafalaya River) GEO/MFL/CMFL/HS Digs	3	Anomaly Investigation Placeholder	No meter Impact Anticipated at this time					New Job Added
220630-0851			SE Louisiana Lateral D (Ship Shoal 70 to Station 62) GEO/MFL Digs	3	Anomaly Investigation Placeholder	No meter Impact Anticipated at this time					New Job Added

Texas & Louisiana Construction & Maintenance

Preliminary Job Number	Start	Finish	Location	Zone	Maintenance Activity	Anticipated Impact	Meter No.	Meter Name	1Line Nominatable Location ID	Revision Date	Revision Notes
220630-0902			Washington Storage Lateral (LC798 to 5451) GEO/MFL Digs	3	Anomaly Investigation Placeholder	Possible impact to injection / withdrawal services.					New Job Added
220630-0905			Port Hudson MCVEA Lateral (Station 60 to LE5006) GEO/MFL Digs	3	Anomaly Investigation Placeholder	No meter Impact Anticipated at this time					New Job Added
230724-0113			Mainline B (Mississippi River to Station 65) HS Digs	3	Anomaly Investigation Placeholder	Potential Meter Outage	4399	Clinton Mid La	1006831		New Job Added
230724-0115			Mainline B (Mississippi River to Station 65) EMAT Digs	3	Anomaly Investigation Placeholder	Potential Meter Outage	4399	Clinton Mid La	1006831		New Job Added
230724-0131			Mainline D (Atchafalaya River to Mississippi River) SCCDA Digs	3	Anomaly Investigation Placeholder	No meter Impact Anticipated at this time					New Job Added
230724-0133			Mainline D (Station 54 to Atchafalaya River) SCCDA Digs	3	Anomaly Investigation Placeholder	No meter Impact Anticipated at this time					New Job Added
230724-0134			Port Hudson MCVEA Lateral (Station 60 to LE5006) GEO/MFL Digs	3	Anomaly Investigation Placeholder	No meter Impact Anticipated at this time					New Job Added
230804-0958			Mainline B (Mississippi River to Station 65) HS Reanalysis Digs	3	Anomaly Investigation Placeholder	Potential Meter Outage	4399	Clinton Mid La	1006831		New Job Added
230804-0959			Mainline C (Mississippi River to Station 65) HS Reanalysis Digs	3	Anomaly Investigation Placeholder	No meter Impact Anticipated at this time					New Job Added
230724-0108			SE Louisiana Lateral A (Mississippi River to Station 65) SCCDA Digs	3	Anomaly Investigation Placeholder	Potential Meter Outage	3270, 7323	Sonat Livingston, Walker	1006169, 1003502		New Job Added
230724-0144			Raceland Lateral A (LE139 to LE78) EMAT Digs	3	Anomaly Investigation Placeholder	Potential Meter Impact	4518, 2923, 2922, 2863, 4654, 2123/4501, 2919, 2148/4611	Raceland, Marcello Meter, Melodia, Laurel Valley, Des Allemands, Gauche, Couba	1006952, 9012443, 9011880, 1005264, 9007904, 1000191/1003801, 9010758, 9000920/9004662		New Job Added
220620-0941			Mainline C (Station 45 to LC1233) HCA SCCDA Digs	3	Anomaly Investigation Placeholder	No meter Impact Anticipated at this time					New Job Added
220622-1344			Mainline C (Station 45 to LC1233) HCA Segment GEO/MFL Digs	3	Anomaly Investigation Placeholder	No meter Impact Anticipated at this time					New Job Added
230724-0110			Mainline A (Station 45 to Atchafalaya River) GEO/MFL/HS Digs	3	Anomaly Investigation Placeholder	Potential Meter Outage	3227	Mamou Texas Gas	1003527		New Job Added
230724-0116			Mainline B (Station 45 to Station 50) GEO/MFL/HS Digs	3	Anomaly Investigation Placeholder	Potential Meter Outage	2856	Duralde	1005046		New Job Added
230724-0129			Mainline C (Station 45 to LC1233) SCCDA Digs	3	Anomaly Investigation Placeholder	No meter Impact Anticipated at this time					New Job Added
HS65			Station 65 Hard Spot Remediation	3	Compressor Station Outage	Potential impact to availability of transportation services from North to South.					New Job Added

Mississippi, Alabama, Georgia, & South Carolina Construction & Maintenance



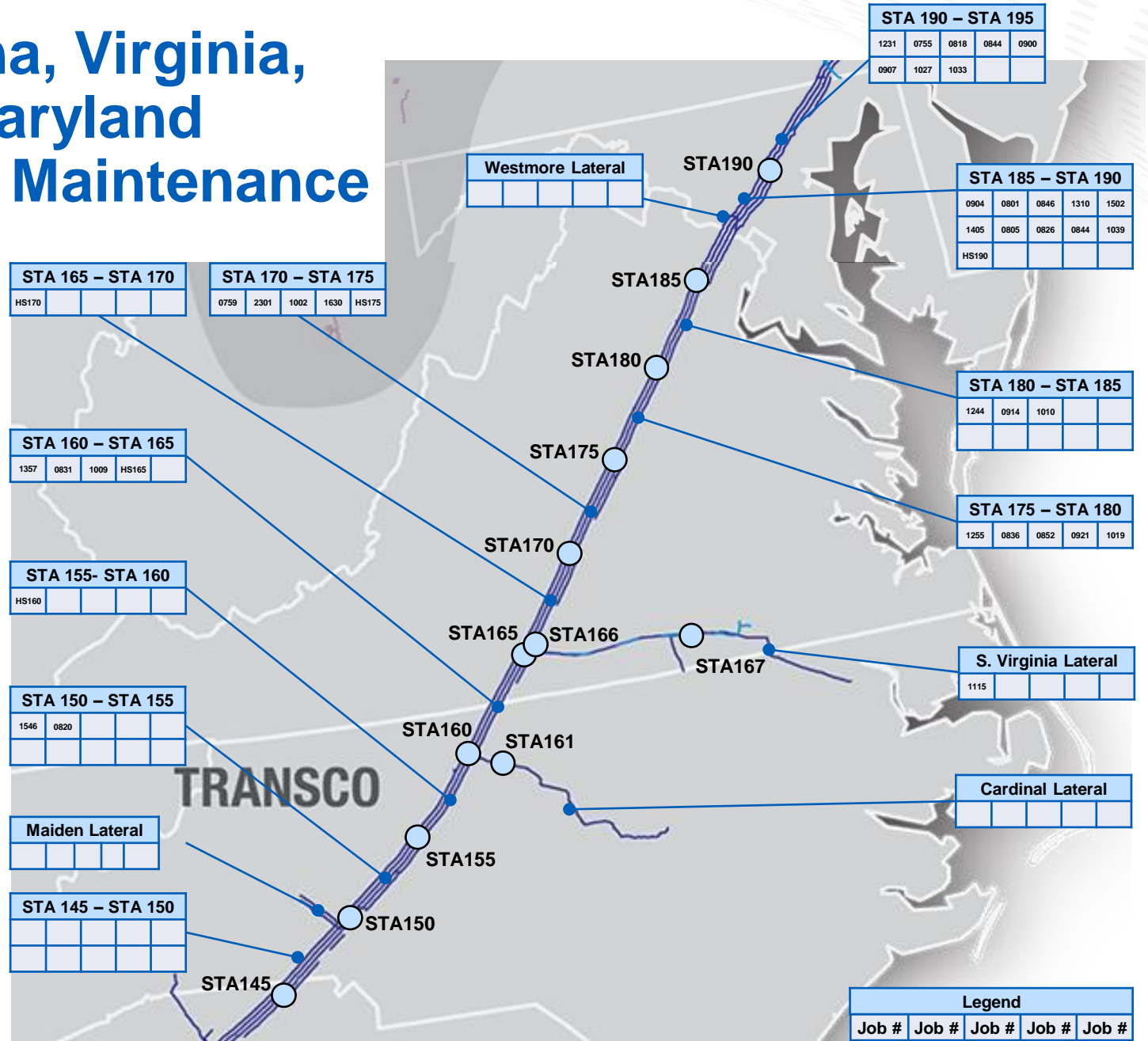
Mississippi, Alabama, Georgia, & South Carolina Construction & Maintenance

Preliminary Job Number	Start	Finish	Location	Zone	Maintenance Activity	Anticipated Impact	Meter No.	Meter Name	1Line Nominatable Location ID	Revision Date	Revision Notes
220720-1500			Mainline C (Station 80 to Station 100) GEO/MFL Reassessment	4	Pipeline Inspection	No meter Impact Anticipated at this time					New Job Added
230620-0642			Mainline B (Station 100 to Coosa River) GEO/MFL Reassessment	4	Pipeline Inspection	No meter Impact Anticipated at this time					New Job Added
230629-0315			Mainline D (Station 70 to Station 80) GEO/MFL Reassessment	4	Pipeline Inspection	Potential Meter Impact	3238, 3650, 3466	South Williamsburg, Ridge Road, Alma Rogers 1	9002520, 9007562, 1006750		New Job Added
230629-0816			Mainline E (A659 to A453) GEO/MFL Reassessment	4	Pipeline Inspection	No meter Impact Anticipated at this time					New Job Added
230630-0723			Mainline A (Station 90 to Station 100) GEO/MFL Reassessment	4	Pipeline Inspection	No meter Impact Anticipated at this time					New Job Added
230630-0844			Mainline D (Station 100 to Station 110) EMAT Reassessment	4	Pipeline Inspection	Potential Meter Impact	7373	Sylacauga	1003507		New Job Added
230630-0903			Mainline B (Station 100 to Coosa River) EMAT Baseline (Cat 2 Hist)	4	Pipeline Inspection	No meter Impact Anticipated at this time					New Job Added
230630-0908			Mainline B (Coosa Rvr to Station 120) EMAT Baseline (Cat 2 Hist)	4	Pipeline Inspection	No meter Impact Anticipated at this time					New Job Added
230630-0912			Mainline A (Station 90 to Station 100) EMAT Reassessment	4	Pipeline Inspection	No meter Impact Anticipated at this time					New Job Added
230725-0925			Mainline C (Station 120 to Station 130) Hard Spot Baseline	4	Pipeline Inspection	No meter Impact Anticipated at this time					New Job Added
230725-0953			Mainline C (Station 140 to Station 145) Hard Spot Baseline	4	Pipeline Inspection	No meter Impact Anticipated at this time					New Job Added
230727-0143			Mainline B (Station 90 to Station 100) HS Baseline	4	Pipeline Inspection	No meter Impact Anticipated at this time					New Job Added
230727-0211			Mainline C (Station 100 to Station 110) HS Baseline	4	Pipeline Inspection	No meter Impact Anticipated at this time					New Job Added
230727-0217			Mainline B (Station 100 to Coosa Rvr) HS Baseline	4	Pipeline Inspection	No meter Impact Anticipated at this time					New Job Added
230824-0747			Mainline C (Station 80 to Station 100) EMAT Run	4	Pipeline Inspection	Potential Meter impact	7332	International Paper	9005842		New Job Added
210625-1206			MLB MP956.55 Ingram Branch Unintended Exposure Repair	4	Anomaly Investigation Placeholder	No meter Impact Anticipated at this time					New Job Added
220620-1709			Mainline A (Station 100 to Coosa River) GEO/MFL/CMFL Digs	4	Anomaly Investigation Placeholder	No meter Impact Anticipated at this time					New Job Added
220620-1759			Mainline A (Station 100 to Coosa River) EMAT Digs	4	Anomaly Investigation Placeholder	No meter Impact Anticipated at this time					New Job Added
220719-1345			Mainline A (Station 90 to Station 100) GEO/MFL Probabilistic Digs	4	Anomaly Investigation Placeholder	No meter Impact Anticipated at this time					New Job Added
220814-2254			Mainline B (Station 100 to Station 120) HS Digs	4	Anomaly Investigation Placeholder	No meter Impact Anticipated at this time					New Job Added
220617-1616			Mainline C (Station 130 to Station 140) GEO/MFL Digs	4	Anomaly Investigation Placeholder	No meter Impact Anticipated at this time					New Job Added
220622-1305			Mainline C (Station 140 to Station 145) EMAT Digs	4	Anomaly Investigation Placeholder	No meter Impact Anticipated at this time					New Job Added

Mississippi, Alabama, Georgia, & South Carolina Construction & Maintenance

Preliminary Job Number	Start	Finish	Location	Zone	Maintenance Activity	Anticipated Impact	Meter No.	Meter Name	1Line Nominatable Location ID	Revision Date	Revision Notes
220719-1118			Mainline B (Station 130 to Station 140) GEO/MFL Probabilistic Digs	4	Anomaly Investigation Placeholder	No meter Impact Anticipated at this time					New Job Added
220719-1400			Mainline C (Station 140 to Station 145) GEO/MFL Probabilistic Digs	4	Anomaly Investigation Placeholder	No meter Impact Anticipated at this time					New Job Added
220728-1236			Mainline B (Station 140 to Station 145) SCCDA Digs	4	Anomaly Investigation Placeholder	No meter Impact Anticipated at this time					New Job Added
230724-1254			Mainline A (Station 140 to Station 145) GEO/MFL Digs	4	Anomaly Investigation Placeholder	No meter Impact Anticipated at this time					New Job Added
220617-0300			Mainline A (Station 120 to Station 130) GEO/MFL Digs	4	Anomaly Investigation Placeholder	No meter Impact Anticipated at this time					New Job Added
220621-1357			Dalton Lateral 24in GEO/MFL Digs	4	Anomaly Investigation Placeholder	Potential Meter Outage	7421, 7418, 7415, 7414, 7416	High Point, Cartersville, Lucas Rd, Murray, Smith Looper Bridge	9011080, 9009809, 9009610, 9009613, 9009851		New Job Added
220719-1419			Mainline D (Station 120 to Station 130) GEO/MFL Probabilistic Digs	4	Anomaly Investigation Placeholder	No meter Impact Anticipated at this time					New Job Added
220620-1746			Mainline A (Station 80 to Station 90) GEO/MFL Digs	4	Anomaly Investigation Placeholder	No meter Impact Anticipated at this time					New Job Added
220620-1835			Mainline C (Station 65 to Station 80) SCCDA Digs	4	Anomaly Investigation Placeholder	Potential Meter Outage	3446, 3544	Darbon Boyd, Frankie Smith	1006750, 1001532		New Job Added
220620-1840			Mainline B (Station 70 to Station 80) SCCDA Digs	4	Anomaly Investigation Placeholder	No meter Impact Anticipated at this time					New Job Added
220621-1422			Eminence Lateral B GEO/MFL Digs	4	Anomaly Investigation Placeholder	Potential impact to Injection/Withdrawal Services					New Job Added
220719-1403			Mainline B (Station 80 to A781) GEO/MFL Probabilistic Digs	4	Anomaly Investigation Placeholder	No meter Impact Anticipated at this time					New Job Added
HS80			Station 80 Hard Spot Remediation	4	Compressor Station Outage	Potential impact to availability of transportation services from North to South.					New Job Added
HS90			Station 90 Hard Spot Remediation	4	Compressor Station Outage	Potential impact to availability of transportation services from North to South.					New Job Added
HS120			Station 120 Hard Spot Remediation	4	Compressor Station Outage	Potential impact to availability of transportation services from North to South.					New Job Added
HS125			Station 125 Hard Spot Remediation	4	Compressor Station Outage	Potential impact to availability of transportation services from North to South.					New Job Added
HS130			Station 130 Hard Spot Remediation	4	Compressor Station Outage	Potential impact to availability of transportation services from North to South.					New Job Added

North Carolina, Virginia, & Maryland Construction & Maintenance



North Carolina, Virginia, & Maryland Construction & Maintenance

Preliminary Job Number	Start	Finish	Location	Zone	Maintenance Activity	Anticipated Impact	Meter No.	Meter Name	1Line Nominatable Location ID	Revision Date	Revision Notes
200514-0904			Mainline C (MLV 180C15 to Station 190) EMAT Run	5	Pipeline Inspection	No meter Impact Anticipated at this time					New Job Added
210804-0759			Mainline D (MLV 170D10 to James River) EMAT Baseline	5	Pipeline Inspection	No meter Impact Anticipated at this time					New Job Added
210804-0801			Mainline D (Potomac River to Station 190) EMAT Run	6	Pipeline Inspection	No meter Impact Anticipated at this time					New Job Added
220615-1255			Mainline B (MLV 175B20 to MLV 180B10) HCA Segment GEO/MFL Reassessment (HS Baseline)	5	Pipeline Inspection	No meter Impact Anticipated at this time					New Job Added
220830-0846			Mainline C (MLV 180C15 to Station 190) HS Baseline	5	Pipeline Inspection	No meter Impact Anticipated at this time					New Job Added
220908-1231			Mainline A (Station 190 to Station 195) HS Baseline	6	Pipeline Inspection	No meter Impact Anticipated at this time					New Job Added
220908-1310			Mainline A (Potomac River to Station 190) HS Baseline	6	Pipeline Inspection	No meter Impact Anticipated at this time					New Job Added
230627-1502			Mainline D (Potomac River to Station 190) GEO/MFL Reassessment	6	Pipeline Inspection	No meter Impact Anticipated at this time					New Job Added
230727-1357			Mainline A (Station160 to James River) HS Baseline	5	Pipeline Inspection	Potential Meter Impact	3587/4580	Cascade Creek	9001061/9001062		New Job Added
220624-0831			Mainline B (MLV 160B10 to Station 170) MFL+GEO+EMAT Digs	5	Anomaly Investigation Placeholder	No meter Impact Anticipated at this time					New Job Added
230628-1115			Pine Needle LNG Discharge B ECDA Digs	5	Anomaly Investigation Placeholder	Potential impact to injection / withdrawal services					New Job Added
220623-1546			Mainline D (Station 150 to MLV 155D2) EMAT & MFL Digs	5	Anomaly Investigation Placeholder	No meter Impact Anticipated at this time					New Job Added
220624-0820			Mainline A (Station 150 to Station 160) GEO/MFL Digs	5	Anomaly Investigation Placeholder	No meter Impact Anticipated at this time					New Job Added
220814-2301			Mainline B (Station 170 to MLV 175B20) HS Digs	5	Anomaly Investigation Placeholder	No meter Impact Anticipated at this time					New Job Added
230804-1002			Mainline B (Station 170 to MLV 175B20) HS Reanalysis Digs	5	Anomaly Investigation Placeholder	No meter Impact Anticipated at this time					New Job Added

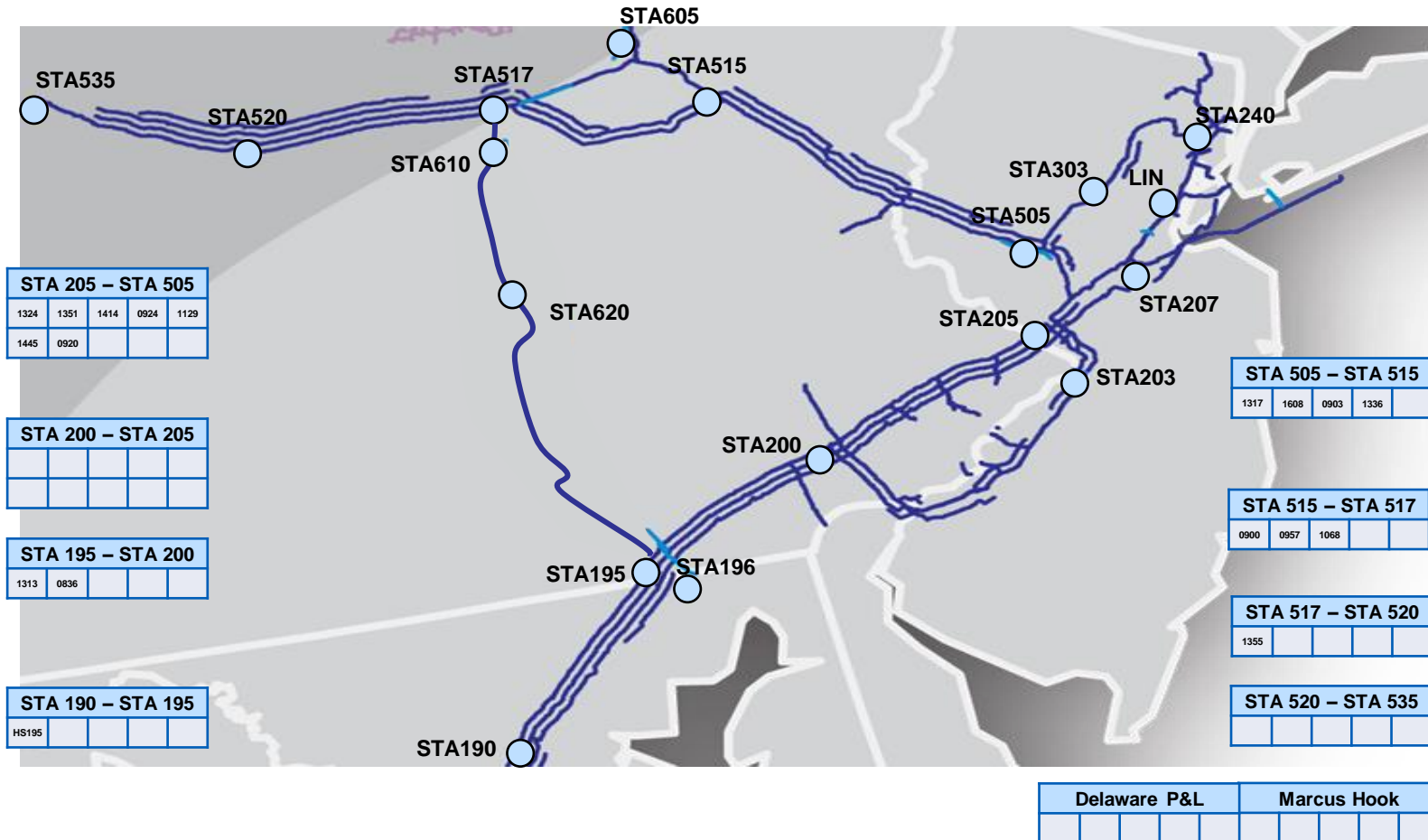
North Carolina, Virginia, & Maryland Construction & Maintenance

Preliminary Job Number	Start	Finish	Location	Zone	Maintenance Activity	Anticipated Impact	Meter No.	Meter Name	1Line Nominatable Location ID	Revision Date	Revision Notes
230804-1009			Mainline B (MLV 160B10 to Station 170) HS Reanalysis Digs	5	Anomaly Investigation Placeholder	No meter Impact Anticipated at this time					New Job Added
220616-1630			Mainline B (Station 170 to MLV 175B20) GEO/MFL Digs	5	Anomaly Investigation Placeholder	No meter Impact Anticipated at this time					New Job Added
220628-1405			Mainline D (Station 185 to Potomac River) HCA Segment SCCDA Digs	5	Anomaly Investigation Placeholder	No meter Impact Anticipated at this time					New Job Added
230627-1244			185X0 Crossover HCA Segment ECDA Digs	5	Anomaly Investigation Placeholder	No meter Impact Anticipated at this time					New Job Added
230628-0755			Mainline C (Station 190 to Station 195) SCCDA Digs	6	Anomaly Investigation Placeholder	No meter Impact Anticipated at this time					New Job Added
230628-0805			Mainline D (Potomac River to Station 190) SCCDA Digs	6	Anomaly Investigation Placeholder	No meter Impact Anticipated at this time					New Job Added
230628-0818			Mainline D (MLV 190D20 to Station 195) GEO/MFL Digs	5	Anomaly Investigation Placeholder	No meter Impact Anticipated at this time					New Job Added
230628-0826			Mainline D (Station 185 to Potomac River) GEO/MFL Digs	5	Anomaly Investigation Placeholder	No meter Impact Anticipated at this time					New Job Added
230628-0836			Mainline B (MLV 175B20 to MLV 180B10) GEO/MFL Digs	5	Anomaly Investigation Placeholder	No meter Impact Anticipated at this time					New Job Added
230628-0844			Mainline B (Station 190 to Station 195) GEO/MFL/CMFL Digs	6	Anomaly Investigation Placeholder	No meter Impact Anticipated at this time					New Job Added
230628-0852			Mainline C (MLV 175C20 to MLV 180C15) GEO/MFL Digs	5	Anomaly Investigation Placeholder	Potential Meter Outage	7348	Remington	1003092		New Job Added
230628-0900			Mainline D (MLV 190D20 to Station 195) EMAT Digs	6	Anomaly Investigation Placeholder	No meter Impact Anticipated at this time					New Job Added
230628-0907			Mainline B (Station 190 to Station 195) EMAT Digs	6	Anomaly Investigation Placeholder	No meter Impact Anticipated at this time					New Job Added
230628-0913			Rockville Columbia M&R Tap ECDA Digs	5	Anomaly Investigation Placeholder	Potential Meter Outage	4080	Rockville	1006227		New Job Added
230628-0914			Mainline B (MLV 180B10 to MLV 185B5) EMAT Digs	5	Anomaly Investigation Placeholder	No meter Impact Anticipated at this time					New Job Added

North Carolina, Virginia, & Maryland Construction & Maintenance

Preliminary Job Number	Start	Finish	Location	Zone	Maintenance Activity	Anticipated Impact	Meter No.	Meter Name	1Line Nominatable Location ID	Revision Date	Revision Notes
230628-0921			Mainline C (MLV 175C20 to MLV 180C15)EMAT Digs	5	Anomaly Investigation Placeholder	No meter Impact Anticipated at this time					New Job Added
230628-1019			Mainline B (MLV 175B20 to MLV 180B10) HS Digs	5	Anomaly Investigation Placeholder	No meter Impact Anticipated at this time					New Job Added
230628-1027			Mainline B (Station 190 to Station 195) HS Digs	6	Anomaly Investigation Placeholder	No meter Impact Anticipated at this time					New Job Added
230628-1033			Mainline C (Station 190 to Station 195) HS Digs	6	Anomaly Investigation Placeholder	No meter Impact Anticipated at this time					New Job Added
230628-1039			Mainline B (V358 to Station 190) HS Digs	6	Anomaly Investigation Placeholder	No meter Impact Anticipated at this time					New Job Added
230804-1010			Mainline B (MLV 180B10 to MLV 185B5) HS Reanalysis Digs	5	Anomaly Investigation Placeholder	No meter Impact Anticipated at this time					New Job Added
HS160			Station 160 Hard Spot Remediation	5	Compressor Station Outage	Potential impact to availability of transportation services from North to South.					New Job Added
HS165			Station 165 Hard Spot Remediation	5	Compressor Station Outage	Potential impact to availability of transportation services from North to South.					New Job Added
HS170			Station 170 Hard Spot Remediation	5	Compressor Station Outage	Potential impact to availability of transportation services from North to South.					New Job Added
HS175			Station 175 Hard Spot Remediation	5	Compressor Station Outage	Potential impact to availability of transportation services from North to South.					New Job Added
HS190			Station 190 Hard Spot Remediation	6	Compressor Station Outage	Potential impact to availability of transportation services from North to South.					New Job Added

Pennsylvania & New Jersey Construction & Maintenance



Pennsylvania & New Jersey Construction & Maintenance

Preliminary Job Number	Start	Finish	Location	Zone	Maintenance Activity	Anticipated Impact	Meter No.	Meter Name	1Line Nominatable Location ID	Revision Date	Revision Notes
220908-1313			Mainline C (Station 195 to MLV 200C10) HS Baseline	6	Pipeline Inspection	Potential Meter Impact	6289	Quarryville	1003110		New Job Added
220908-1317			Mainline Caldwell B Loop (Station 505 to Roseland Regulator) HS Baseline	6	Pipeline Inspection	Potential Meter Impact	6287, 6302, 6255, 6303, 6137	Bridgewater, Hoeschst Celanese, Gillette, Chatham, Roseland	1003347, 1003354, 1003342, 1003355, 1003334		New Job Added
220908-1324			Mainline A (Raritan River to Passaic River) HS Baseline	6	Pipeline Inspection	Potential Meter Impact	6031, 6197, 6153, 6327, 6037	Central, Edison, North Avenue, Raymond, Essex	1003319, 1003339, 1003388, 9006942, 1003321		New Job Added
230623-1355			Leidy Line C (Hughesville M&R to Station 520) GEO/MFL Reassessment	6	Pipeline Inspection	No meter Impact Anticipated at this time					New Job Added
230626-1351			Mainline A (Passaic River to Hackensack River) GEO/MFL Reassessment	6	Pipeline Inspection	Potential Meter Impact	6039, 6097	Harrison, East Rutherford	1003322, 1003330		New Job Added
230626-1414			Mainline A (Passaic River to Hackensack River) EMAT Baseline Assessment (No Hist)	6	Pipeline Inspection	Potential Meter Impact	6039, 6097	Harrison, East Rutherford	1003322, 1003330		New Job Added
230627-0900			Leidy Loop B (Station 515 to Station 517) GEO/MFL Reassessment	6	Pipeline Inspection	No meter Impact Anticipated at this time					New Job Added
230627-0957			Leidy Loop Line D (MLV 515LD22) to Leidy Line D (Station 517) GEO/MFL Reassessment	6	Pipeline Inspection	No meter Impact Anticipated at this time					New Job Added
230627-1339			Lower Bay Loop C (Morgan M&R to Long Beach M&R) GEO/MFL Reassessment	6	Pipeline Inspection	Potential Meter Impact	6278, 6334, 6210	Morgan, Floyd Bennett, Long Beach	1006279, 9008503, 1003279		New Job Added
230628-0836			UDS 616 Mainline A Susquehanna River X-ing S GEO/MFL Reassessment	6	Pipeline Inspection	No meter Impact Anticipated at this time					New Job Added
230628-0900			Somerton Lateral (P384 to P386) GEO/MFL/CMFL Reassessment	6	Pipeline Inspection	Potential Meter Impact	6192	Somerton	1003463		New Job Added
230628-0909			72nd St Lateral Hudson River X-ing N GEO/MFL Reassessment	6	Pipeline Inspection	No meter Impact Anticipated at this time					New Job Added
230628-0923			72nd St Lateral Hudson River X-ing S GEO/MFL Reassessment	6	Pipeline Inspection	No meter Impact Anticipated at this time					New Job Added
230628-0924			Mainline A Passaic River X-ing GEO/MFL Reassessment	6	Pipeline Inspection	No meter Impact Anticipated at this time					New Job Added
230628-1129			Piles Creek M&R Tap GEO/MFL Reassessment	6	Pipeline Inspection	Potential Meter Impact	6263	Piles Creek	1003343		New Job Added

Pennsylvania & New Jersey Construction & Maintenance

Preliminary Job Number	Start	Finish	Location	Zone	Maintenance Activity	Anticipated Impact	Meter No.	Meter Name	1Line Nominatable Location ID	Revision Date	Revision Notes
230628-1445			MLCW-B (Station 303) to MAIN-B to 72LTA (Hudson River) GEO/MFL Reassessment	6	Pipeline Inspection	Potential meter Impact	6301, 6284, 6115	Montclair Cogen, Clifton, Central Manhattan	1003353, 1003345, 1003278		New Job Added
230629-0920			Mainline A Passaic River 30 inch GEO/MFL Reassessment	6	Pipeline Inspection	No meter Impact Anticipated at this time					New Job Added
230713-0903			Leidy Line B (Delaware River to Station 515) EMAT Reassessment	6	Pipeline Inspection	No meter Impact Anticipated at this time					New Job Added
230801-1608			Leidy Line B (Station 517 to MLV 520LB30) EMAT Reassessment	6	Pipeline Inspection	No meter Impact Anticipated at this time					New Job Added
230901-1336			Leidy Line A (Delaware River to Station 515) Integrity HCA Segment HS Digs	6	Anomaly Investigation Placeholder	No meter Impact Anticipated at this time					New Job Added
HS195			Station 195 Hard Spot Remediation	6	Compressor Station Outage	Potential impact to availability of transportation services from North to South.					New Job Added

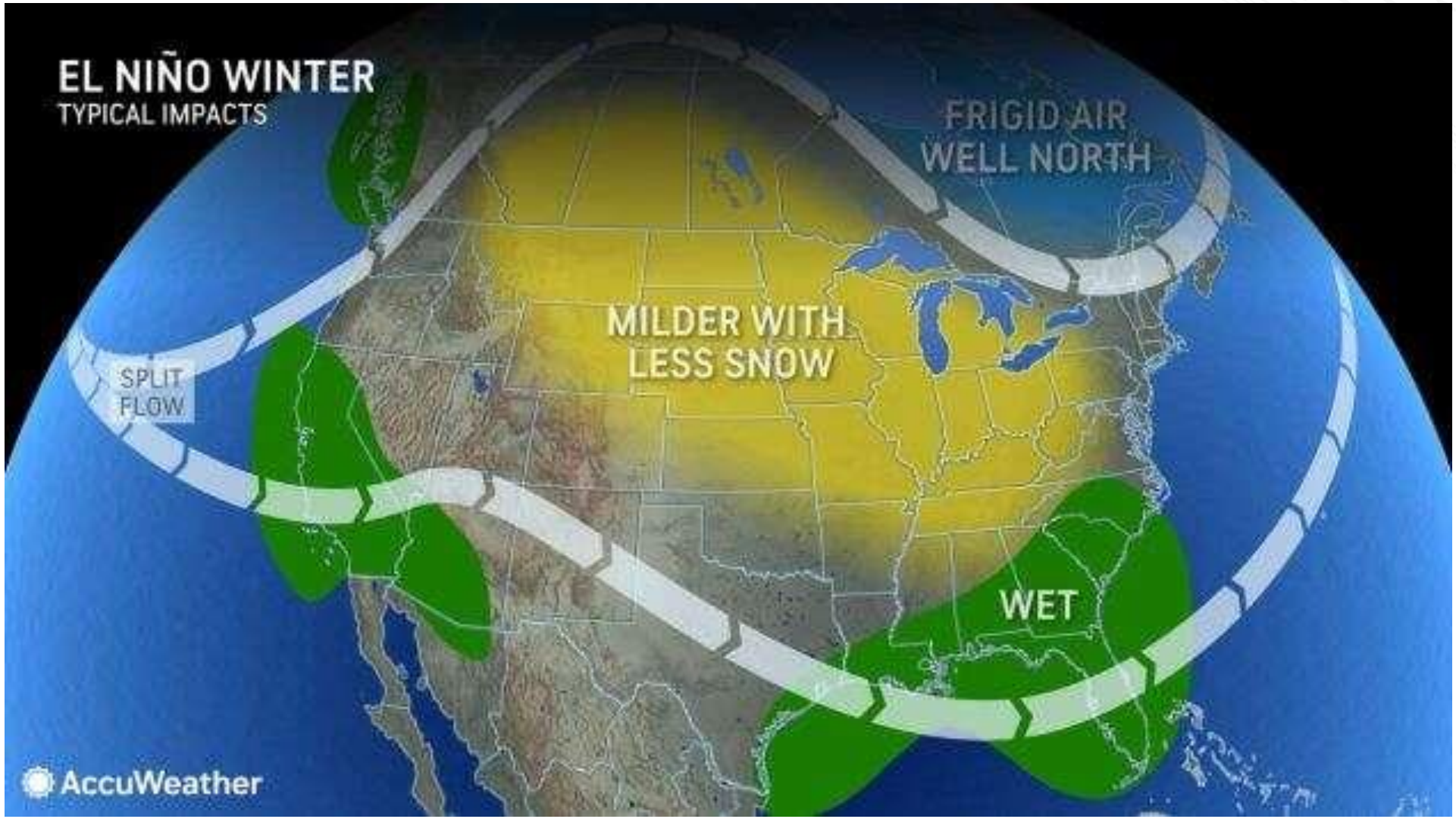
Now What?

- Individual Project Updates
 - Job numbers and outage dates are subject to change
 - Pipeline Control is still evaluating maintenance scheduled for 2024
 - Expect more jobs to be posted in the coming months
 - 2024 Transco 1Line maintenance table will be posted in a single posting with the current 2023 table

Gas Control Team

- Ross Sinclair (Manager, Pipeline Control)
 - 713-215-2688
 - Ross.M.Sinclair@Williams.com
- Richard Truxell (Consultant, Pipeline Control)
 - 713-215-4044
 - Richard.W.Truxell@Williams.com
- Kelsey Johnson (Maintenance Coordinator, Pipeline Control)
 - 281-217-5865
 - Kelsey.Johnson@williams.com
- Brian Cargill (Supervisor, Pipeline Control)
 - 832-441-8154
 - Brian.Cargill@Williams.com
- Seth Johnson (Supervisor, Pipeline Control)
 - 832-844-8567
 - Seth.Johnson@Williams.com
- Scott Cummings (Maintenance Coordinator, Pipeline Control)
 - 713-215-4037
 - John.Cummings2@Williams.com

Winter Weather Outlook



Winter Weather Outlook

Summary:

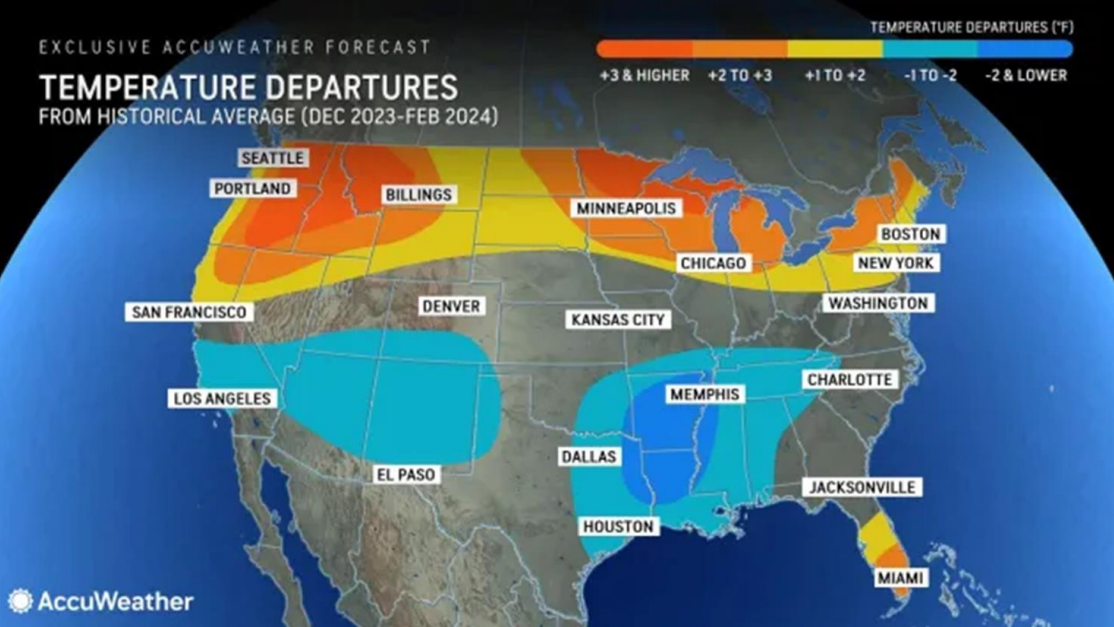
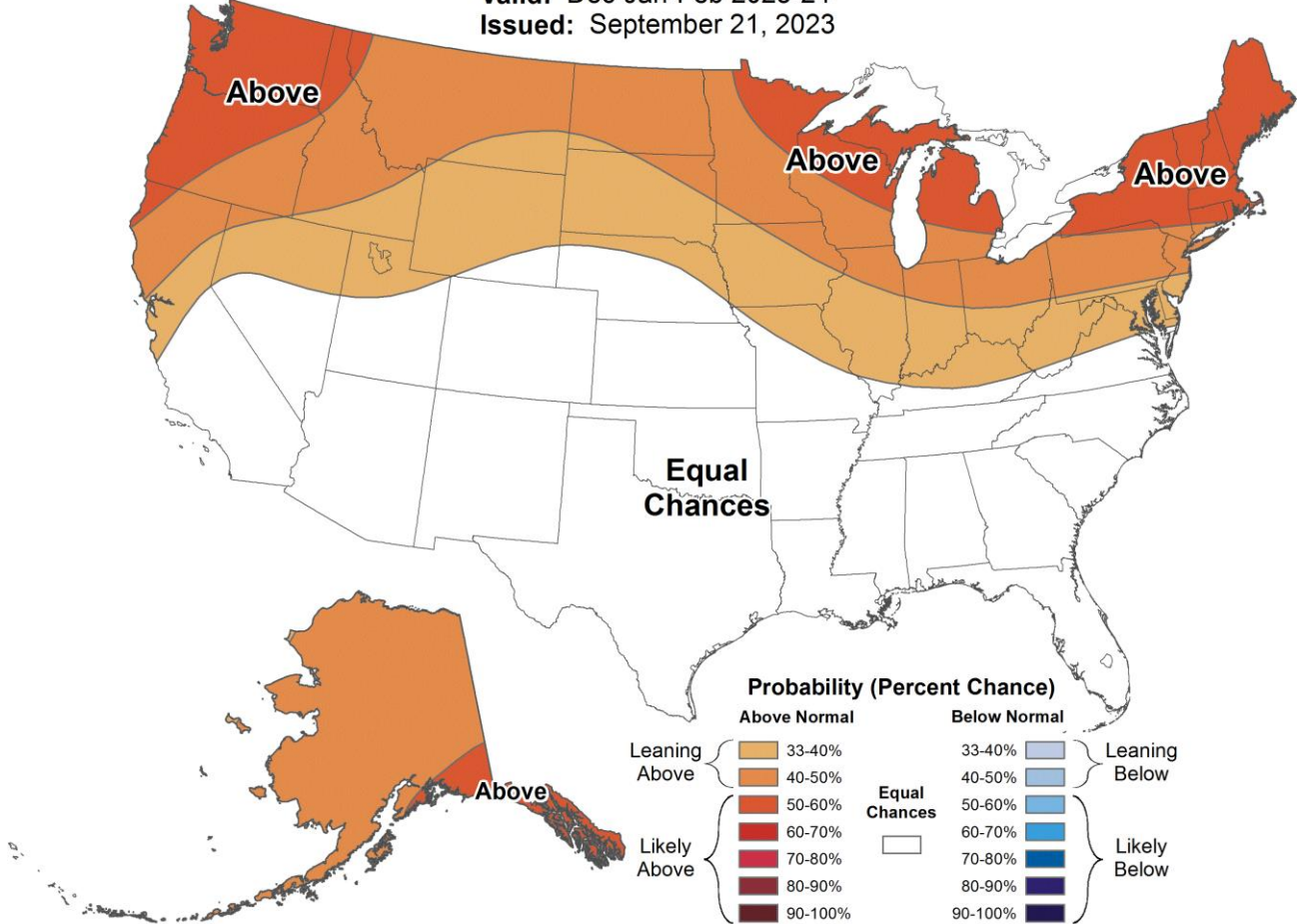
- The National Weather Service forecasts a 33%-50% chance of winter temperatures being above normal in our Northeast Market Area and near normal in the Gulf Coast, Southeast and Mid-Atlantic Market Areas.
- Accuweather’s forecast indicates a similar pattern in the Northeast with near average to cooler from the Gulf Coast to the Mid-Atlantic.



Seasonal Temperature Outlook



Valid: Dec-Jan-Feb 2023-24
 Issued: September 21, 2023



Winter Weather Outlook

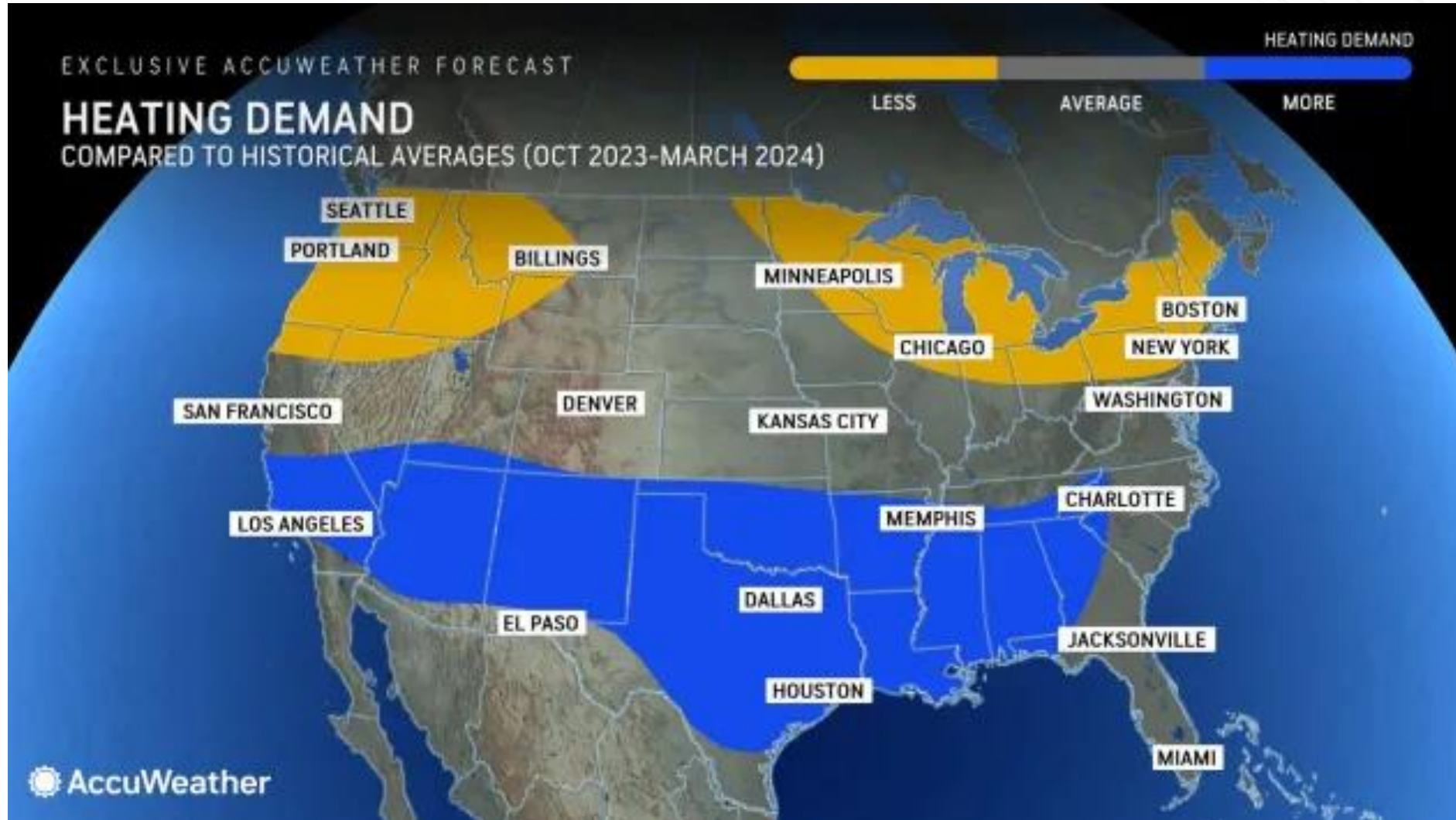
SNOWFALL PREDICTIONS

WINTER 2023-2024

Location	Average Snowfall	Snowfall 2022-2023	Prediction 2023-2024
▶ Boston, MA	49.2	12.4	38-44
▶ New York City, NY	29.8	2.3	18-26
▶ Philadelphia, PA	23.1	0.3	16-24
▶ Pittsburgh, PA	44.1	17.6	28-36
▶ Buffalo, NY	95.4	133.6	70-85

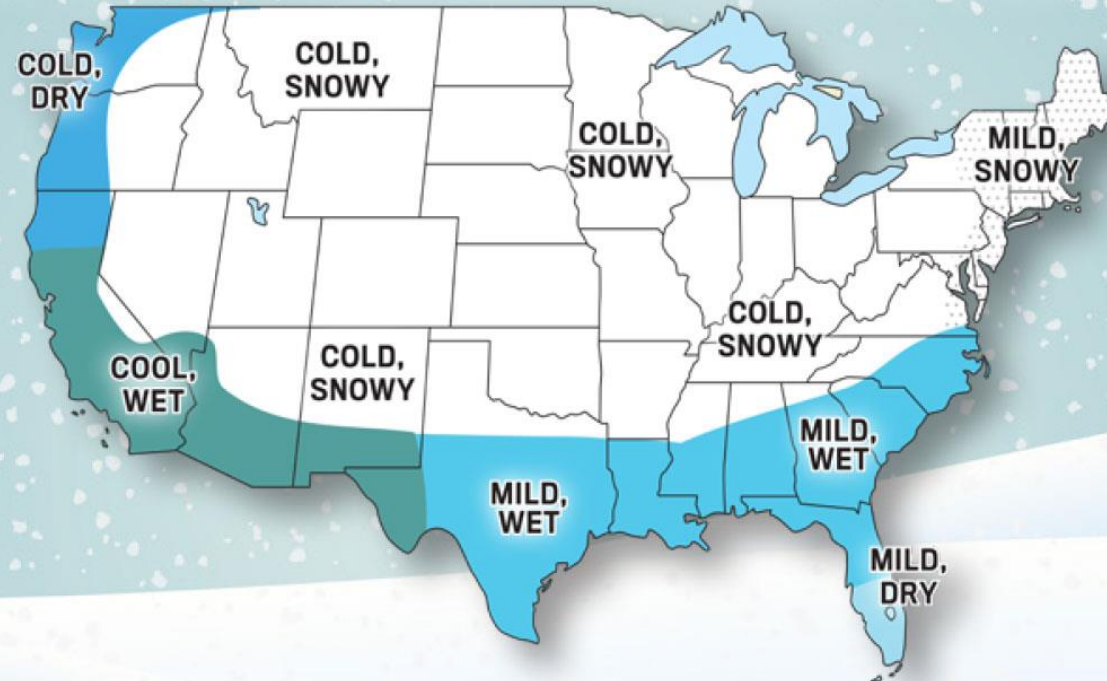
AccuWeather

Winter Weather Outlook



Winter Weather Outlook

2023-2024 WEATHER FORECAST: WINTER WONDERLAND!



Winter Weather Outlook

Winter Storm Names 2023-24

Archer
Bryson
Cait
Donovan
Ember
Finn
Gerri

Heather
Indigo
Jarvis
Kayden
Lorraine
Miguel
Noor

Orzelle
Preston
Qadir
Ronnie
Sawyer
Tormund
Unitas

Victoria
Winton
Xenope
Yoshino
Zyler

Winter Storm Elliot – Event Overview

- Mild temperatures preceded a rapid drop in temperature combined with high winds
- Williams collaborated with stakeholders (including LDC and Power Generation customers) in preparation of the increased demand
- Williams met its delivery obligations to customers despite dramatic load increases and operational challenges
- Recovery over the days following the event included collaboration with customers and key stakeholders

Williams Storm Preparation 12 / 20 – 12 / 23

- Meetings with Key Stakeholders and Pipeline Control: interconnecting pipelines and key customers
- Established Daily Pipeline Control morning call through Holiday weekend
- Prepared all supporting operations (storage, on-system LNG) to support the anticipated increase in demand
- Williams operationally increased line pack
- Shippers supplied in excess of demand

Storm Impact 12 / 23 – 12 / 24

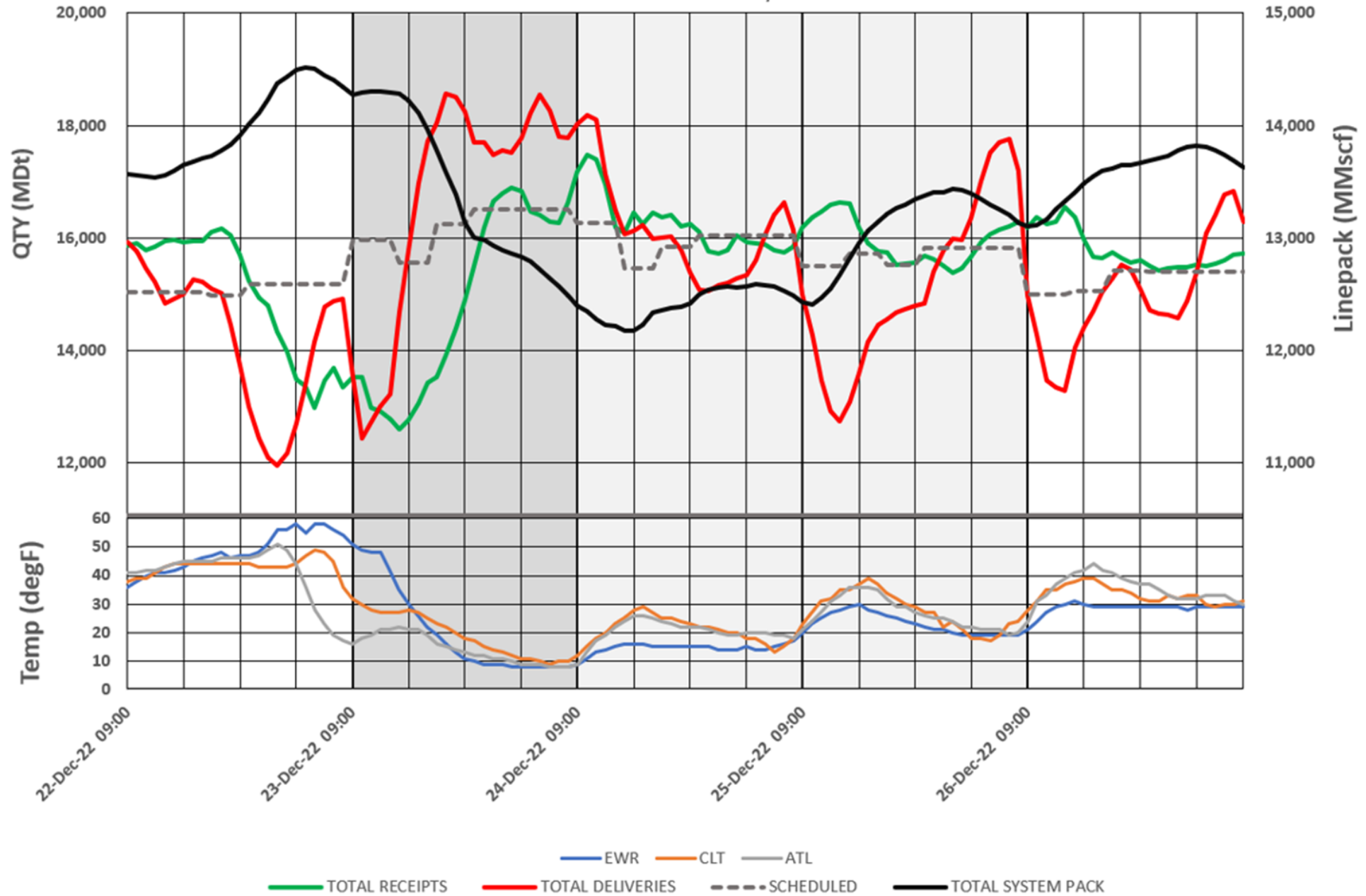
- Deliveries increased by > 40% from 10am to 7pm, with >30% of that increase occurring in 4 hours from 1 – 5pm
- Began withdrawing from storage to support increased demand
- Cold weather challenges with equipment
- Significant drop in line pack as customer demand outpaced supply
- Combination of high demand, reduced supply resulted in line pressures lower than typical

Storm Recovery 12 / 24 – 12 / 26

- Max withdrawal from storage and LNG
- Actively confirmed receipt points down that were underperforming (not providing supply as Scheduled)
- Coordinated with key customers

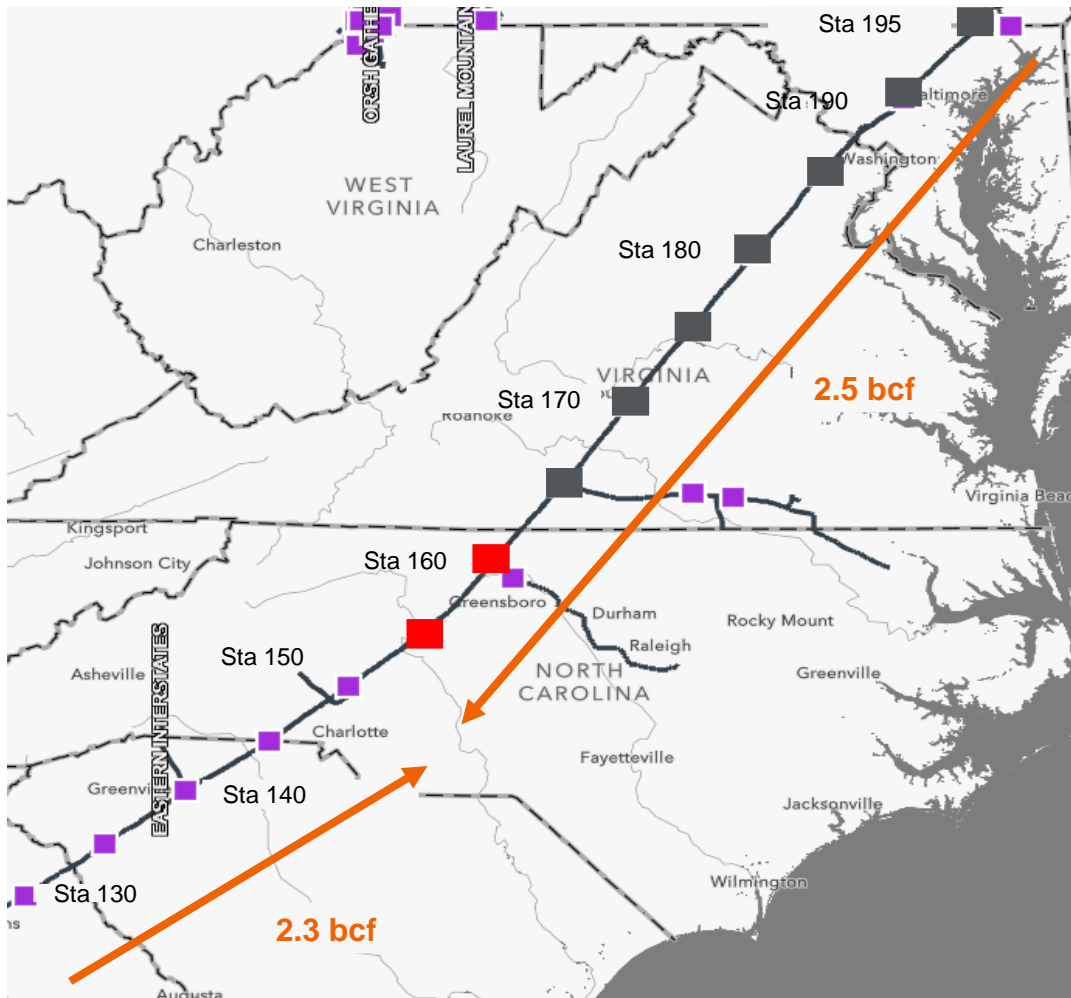
Systemwide Deliveries, Receipts, Linepack and Selected Temperatures

December 2022 - Gas Days 22-26



MVP Predicted Summer Impacts

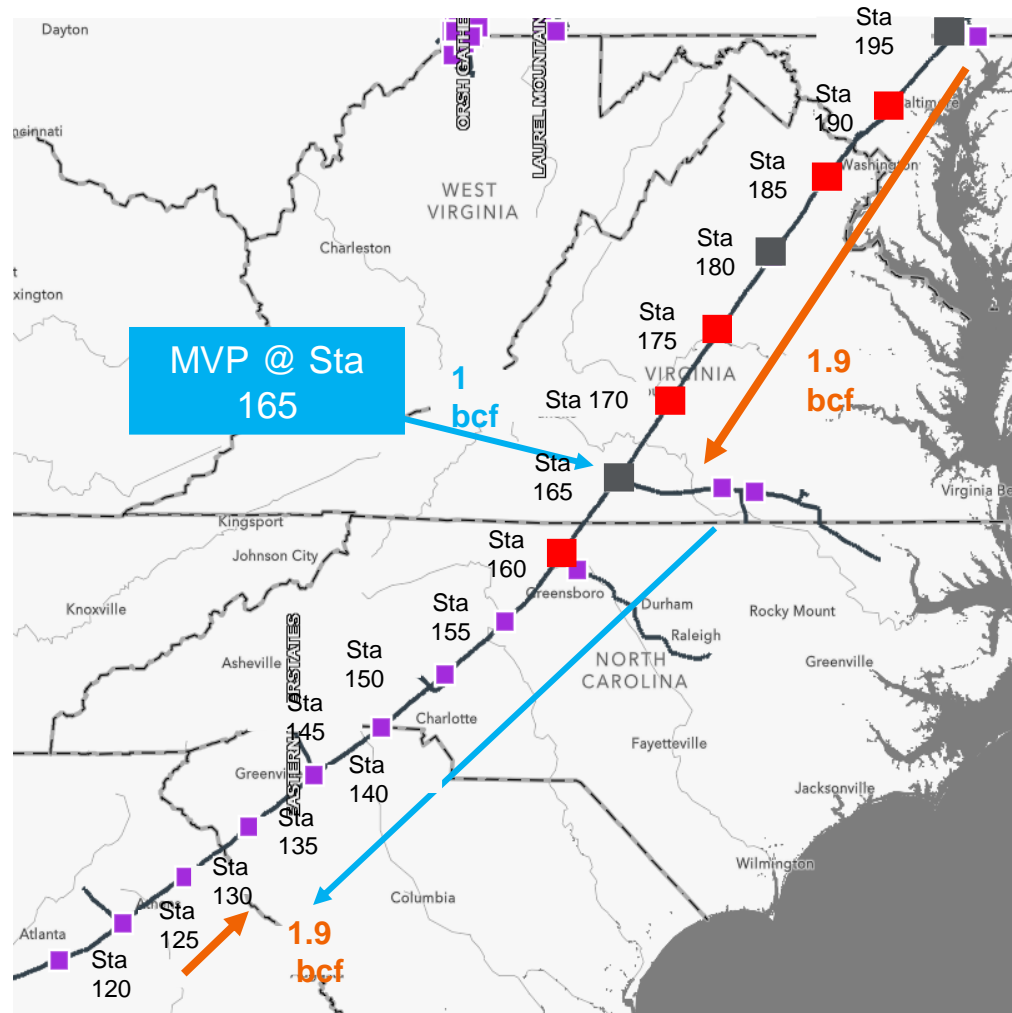
Transco



Transco Gas Flow Direction

MVP Gas Flow Direction

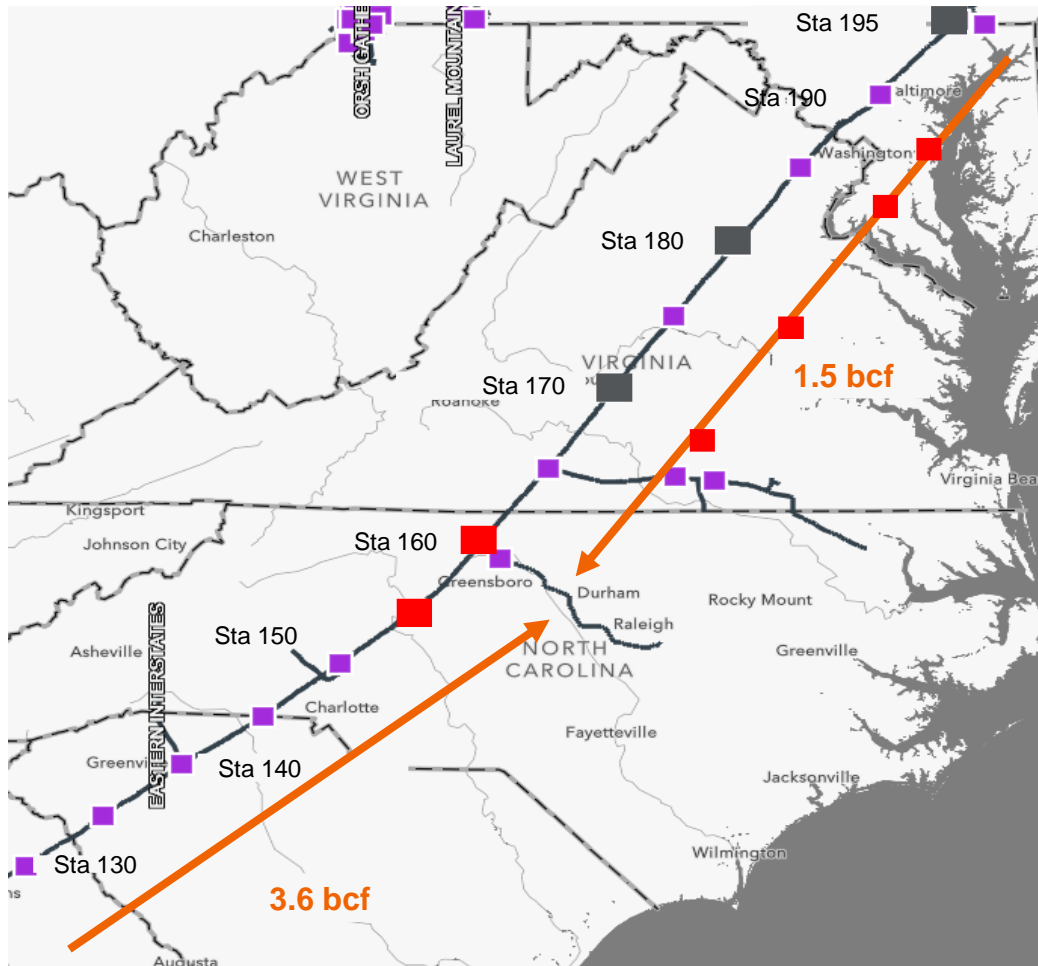
Transco + MVP



Summer System Conditions (Sta 165 allocated >1 bcf flow South)

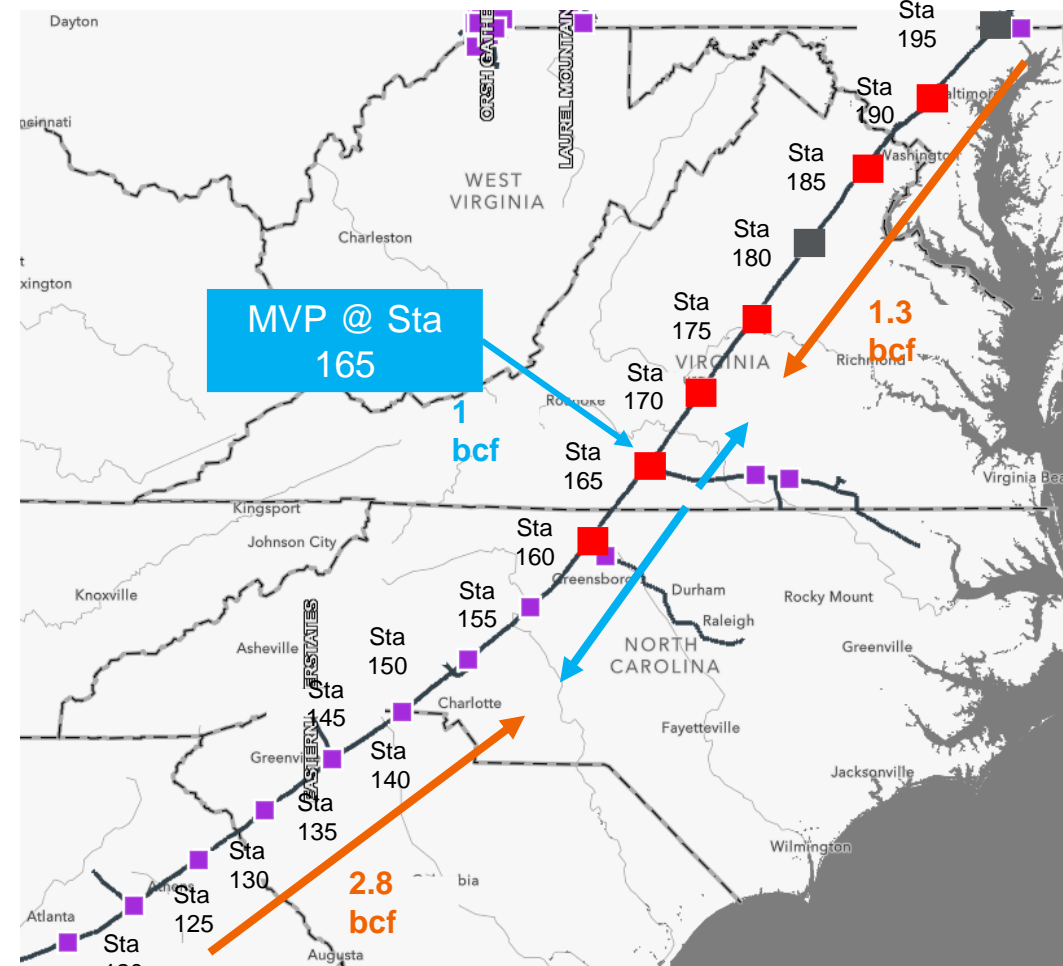
MVP Predicted Winter Impacts

Transco



Transco Gas Flow Direction
MVP Gas Flow Direction

Transco + MVP



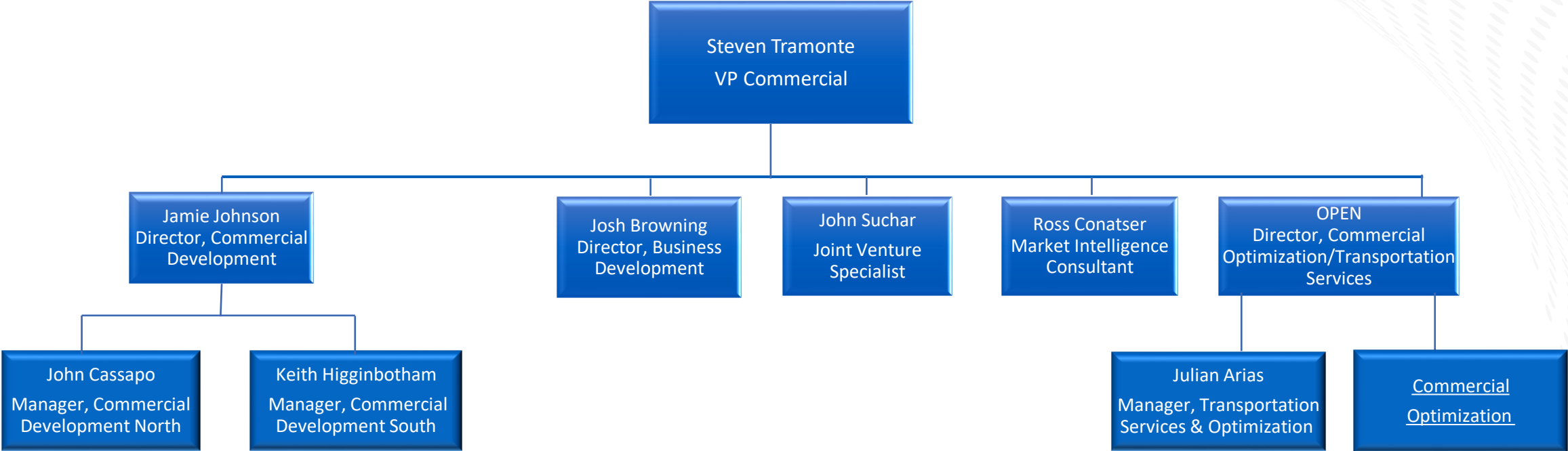
Winter System Conditions (Sta 165 allocated <1 bcf flow South)



WE MAKE CLEAN ENERGY HAPPEN®

Commercial Services Updates

Commercial Organization



Commercial Responsibilities

Transportation Services

- Scheduling
- IT and Pool contracts
- Invoicing
- Imbalance Management
- Maintenance
- EDI Questions
- New BA Setup
- Location Changes
- Measurement
- Constraints
- OBA Management

Commercial Development

- Capacity Release
- Interconnect Requests
- Contract Extensions
- Service Agreements/Amendments
- Mergers/Name Changes
- Expansion Projects in Execution
- Resubscription of Unsubscribed Capacity
- OBA Agreements and setup

Commercial Optimization

- Short Term Firm Inquiries
- Short Term Firm open seasons
- Parks
- Loans
- Unsubscribed Capacity
- System Management Gas

Business Development

- Expansion Project Opportunities
- Expansion Project Open seasons
- Expansion Project Updates

Who do I call?

Transportation Services

North

- Michelle Nguyen
- Nicole Kirchhoff
- Milton Emerson

Mid-Atlantic

- Liz Silvas
- Robert Ashby
- Austin Sarabia

South

- Stacey Woolcock
- Jenni LaBeth
- Anish Patel
- Lizeth Delagarza

Evening/Weekend

- Art Fresquez
- Michael Cahill

Commercial Development

North

- Toi Anderson
- Andrea Beltran
- Karen De Leon
- Michelle Mickelson

South

- Taylor Russell
- Christine Martinovich
- Bill Eiser
- Jeff Stockel
- Mark Mohan
- Danielle Petty

Commercial Optimization

- Chris Barnett
- Kristy Molina
- Suzie Heiser

Business Development

- Mitchell Meyers
- Clay Glockzin
- Nathan Davidson
- Natalie Queen
- Collin Chambers

INFORMATIONAL POSTINGS

OPEN IN NEW WINDOW

- Capacity
- Gas Quality
- Index Of Customers
- Locations
- Notices
- Posted Imbalances
- Regulatory
- Standards of Conduct
- Tariff
- Transactional Reporting
- Capacity Release Indices
- Downloads
- Search
- Customer Activities
- Site Map

Operational Info

1Line Timelines

Contacts

Add'l Operating Info/SMG Report

24 HOUR PIPELINE EMERGENCY:
1-800-440-8475

Weekend/Evening Contacts

Commercial Services
Weekend Duty

Sep 22 - 25, 2023
Weekend: Michael Cahill
Fri - Mon
713-215-3393 office
407-865-4085 cell
ICE: MCAHILL2

Commercial Services
Evening Duty

Mon-Thur 5:00pm-9:30pm
M-F Art Fresquez
7132152451 office
8327760466 cell
ICE: artfresquez

[Contact My Rep](#)

Scheduling Desk
1-888-210-8475
713-215-2255
[Send Email](#)

Critical Notices

[Third Party Maintenance Outage - CTGS Lateral Locations](#)
10/12/2023 01:01:17 PM

[2023 Major Construction and Maintenance Projects](#)
10/12/2023 06:30:28 AM

[Update Job 495889 Washington Storage Planned Outage and Maintenance](#)

Constraint Points

- ▶ [10/10/2023 07:39:13](#)
- ▶ [10/06/2023 08:05:45](#)
- ▶ [10/06/2023 07:52:59](#)
- ▶ [10/05/2023 08:14:34](#)
- ▶ [09/28/2023 14:53:00](#)

Non-Critical Notices

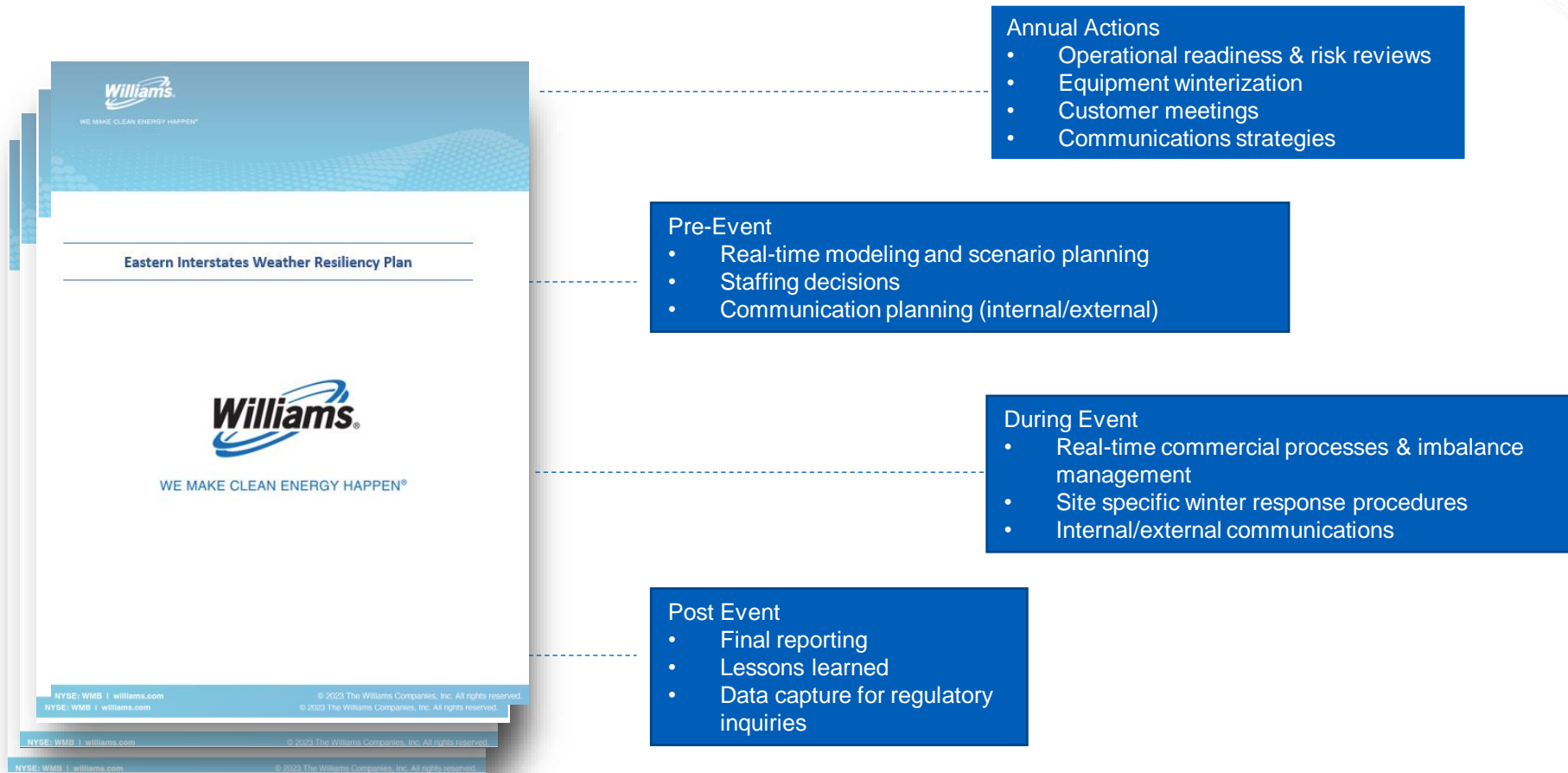
[10/04/2023 09:05:42 AM](#)
[LSS and SS-2 Rate Changes Effective 11/01/2023](#)
[10/03/2023 08:33:25 AM](#)
[LSS and GSS Rate Changes Effective 11/01/2023](#)
[10/03/2023 08:32:20 AM](#)

FERC Watch

Eastern Interstates Weather Resiliency Plan

Objectives:

- Continuously improve reliability and system performance during weather events
- *Formalize* cross-functional processes required to successfully manage the Transco system amid extreme weather events



Steps to Ensure Reliability for Winter 2023



Active Confirmations Changes

- Enhancing the confirmation process to adjust nominations to match flow rate proactively utilizing new internal tools.



Pool Tolerance Changes

- Limiting Pool Tolerance to 0.5% beginning December 1st



Retro Changes

- Beginning Winter Season 2023, Retros will be disallowed during identified OFOs

Limiting Retro Activity during OFOs

What is changing?

- Transco will be limiting retro activity during specified OFOs.

Why is this change needed?

- To protect the integrity of the system.
- To avoid fluctuations that deviate from scheduled volumes.

How will it be implemented?

- Transco will determine if conditions during an OFO warrant disallowing retro adjustments for the duration of the OFO.
- In order to notify shippers, the typical OFO critical notice will include details establishing whether or not retros will be allowed during the identified period of time.
- If it is deemed that retros will be disallowed, this will apply to the entire system regardless of which zone the OFO was directed. Shippers will not be allowed to submit any retro nominations regardless of zone or transaction type.

Will there be any exceptions?

- Operators will still be allowed to submit retro PDA transactions as long as the PDAs were established during the regular cycles for that gas day.
- System level adjustments such as measurement will still be allowed retroactively and will be processed accordingly.

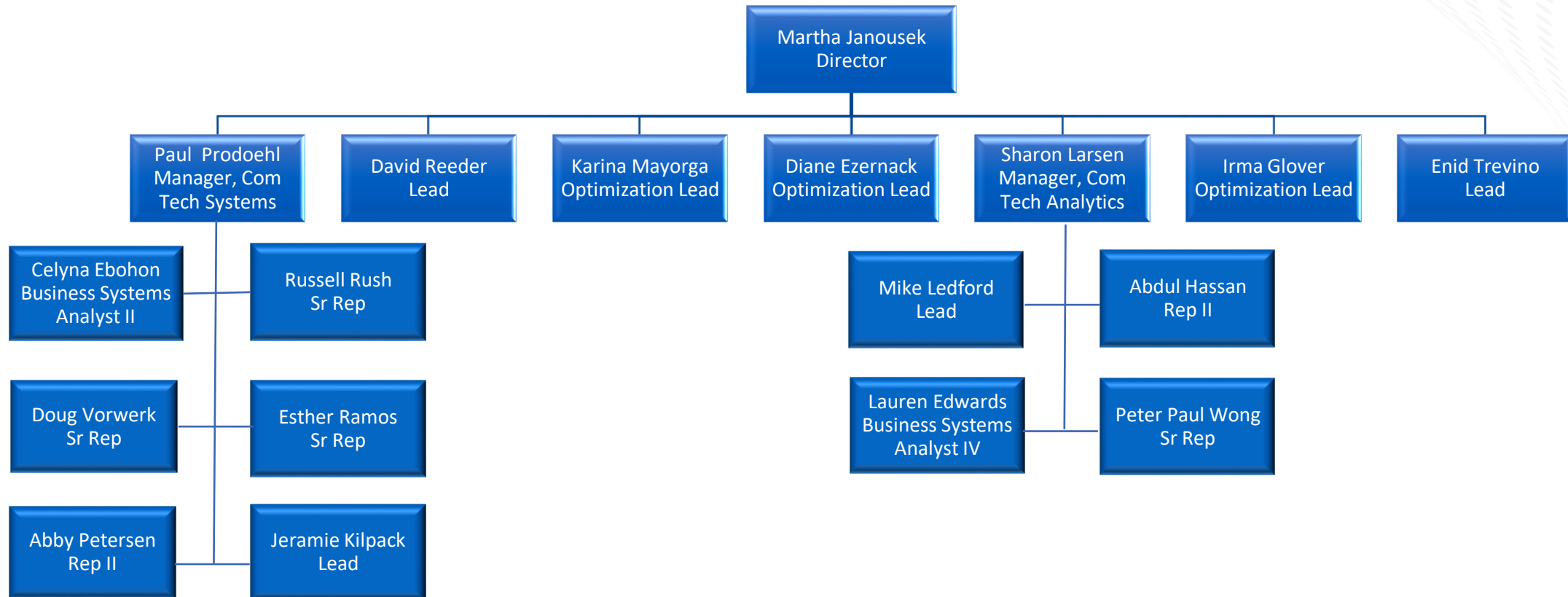


WE MAKE CLEAN ENERGY HAPPEN®

Commercial Technology & Analytics Updates

Commercial Technology & Analytics

Transmission & Gulf of Mexico



Commercial Technology Summary

Recent Changes to 1Line & Analytics:

- Synchronization of Gas Analysis pages and reports for Hourly, Daily, and Monthly
- Hourly Measurement Parent/Child Summary
- Receipt TSB locations added to Nom/HBLV Based Constraints Report and Map (Oct release)
- Ability to not allow user submitted retros system-wide during designated OFOs
- Weather Resiliency tools to anticipate weather impacts to the customers
- Invoice Reminder Note



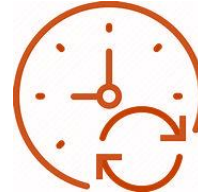
Potential Future Enhancements:

- 1Line Modernization Continuation
- 1Line Application move to Azure Cloud
- New Customer Interactive Portal
- 1Line Customer Forum Survey
- Capacity Release Upload

Recent Changes to 1Line & Analytics

Synchronization of Gas Analysis pages and reports for Hourly, Daily, and Monthly

- Report and Page synchronized to provide the same data during the day
- Available hourly, daily, and monthly



Hourly Measurement Parent/Child Summary

- Summary of hourly measurement for gas day across multiple meters aggregated into a single location
- Customer must be operator for all locations in the aggregation to view



Receipt TSB locations added to Nom/HBLV Based Constraints Report and Map (Oct release)

Receipt TSB constraint breakdown by priority of service



Reminder Note

Invoice Summary Page and Report – Please reference Invoice Number on Remittance

System wide retros during OFOs

Transco will determine if system-wide retros will be allowed for the gas day under OFO



Weather Resiliency tools to anticipate weather impacts to the customers

- By comparing scheduled to actual hourly flows
- Additional tools to assist in monitoring customer underperformance

Potential Future Enhancements

Commercial Modernization Efforts

1Line continues its modernization effort to provide a secured, reliable system for all the Transco pipeline customers. These efforts include:

- Evolving architecture to enable future business needs.
- Improve overall customer experience.



1Line Application move to Azure Cloud

Will allow 1Line to utilize new technologies to provide better service in near future

Capacity Release Upload

Ability to upload Offers in standardized file format



1Line Customer Forum Survey

Feedback to better understand customer needs and potential enhancements to 1Line.



New Customer interactive Portal

- Provide dashboards for data analysis
- Evaluating platforms to ensure security, accessibility, and ease of use



Possible Future Tools

With the modernization efforts, Transco is looking at providing more interactive tools for our customers. The types of tools include:

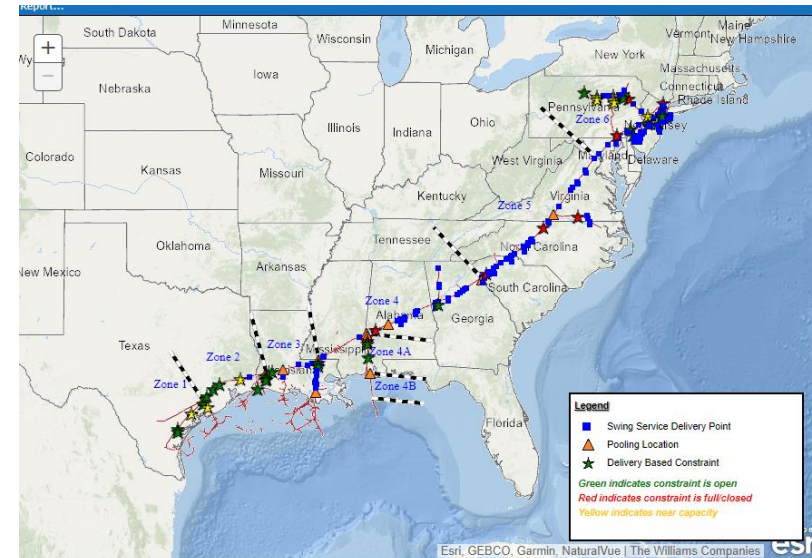
Interactive Help Tools

- Frequently Asked Questions (FAQ) reference area



Enhanced Mapping

- Updating version to include integration layers
 - Contract Rights
 - Contract Utilization



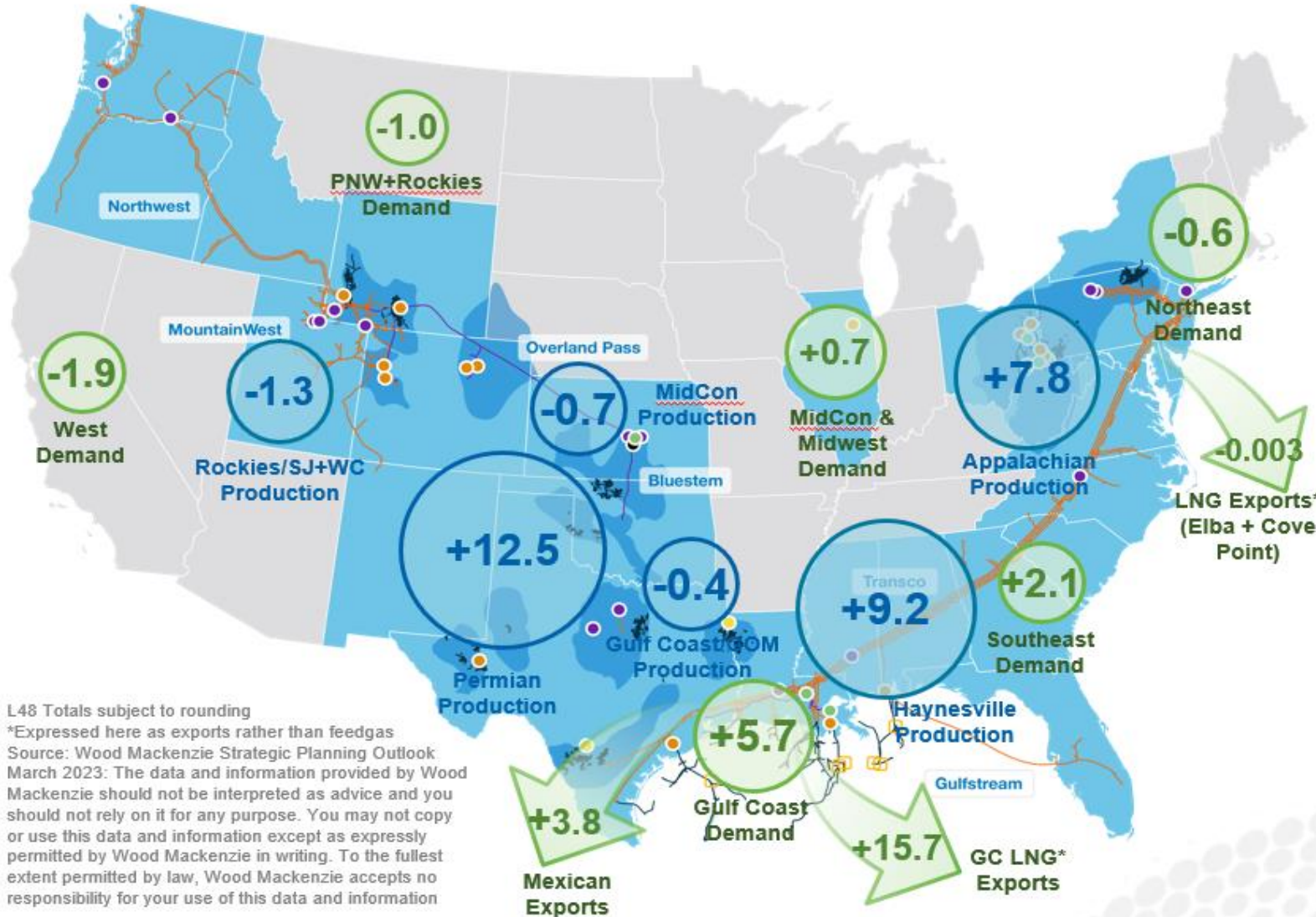


WE MAKE CLEAN ENERGY HAPPEN®

Market & Business Development Updates

CONNECTING REGIONAL NATURAL GAS DEMAND WITH BEST-IN-CLASS PRODUCTION BASINS

L-48 Production and Demand Changes in Key Areas in Bcf/d (2022-2032)



Total L-48 Growth (2022-2032)

Production	+26.1 Bcf/d
Canadian Imports	-0.5 Bcf/d
Demand	+24.6 Bcf/d

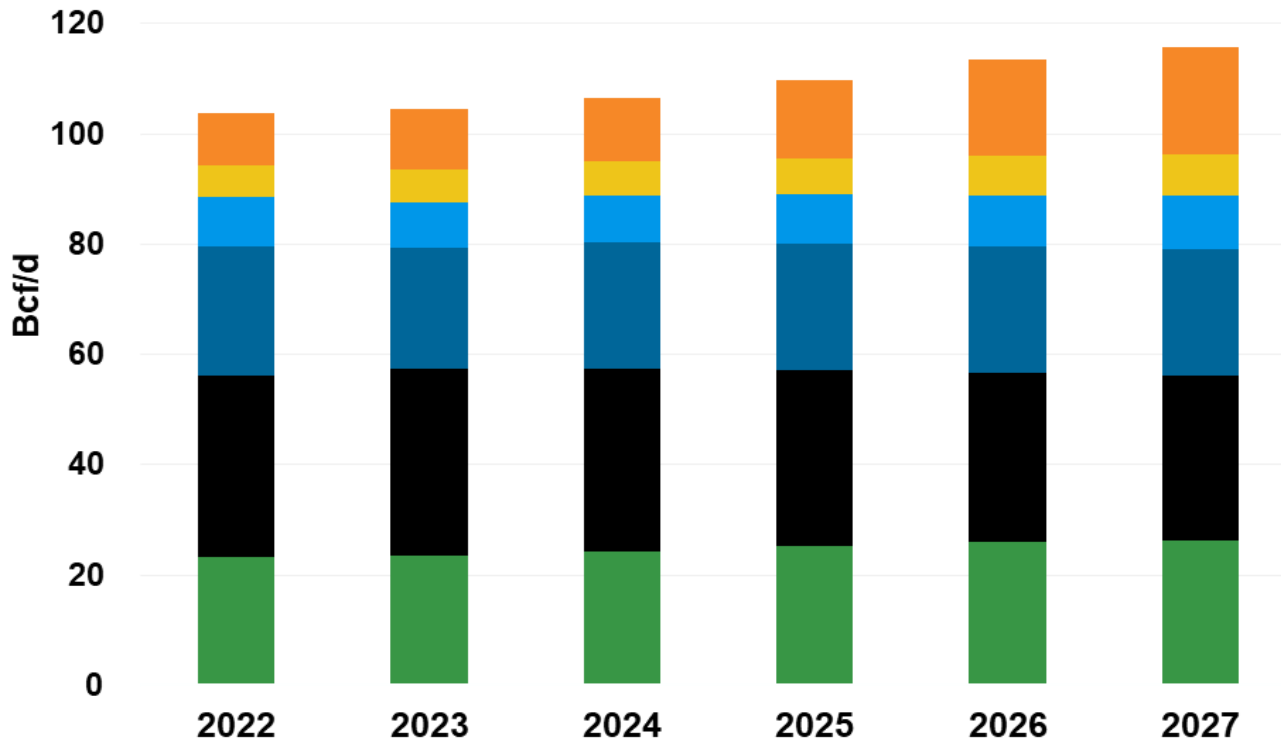
- Interstate and Intrastate Natural Gas Pipeline
- Natural Gas Gathering Pipeline
- Natural Gas Liquids Pipeline
- Oil Gathering Pipeline
- Gas Plant
- Fractionator
- Storage
- Amine Treating
- Rail Terminal
- Offshore Platform
- Supply Area Basin
- Operational Activity

L48 Totals subject to rounding
 *Expressed here as exports rather than feedgas
 Source: Wood Mackenzie Strategic Planning Outlook March 2023: The data and information provided by Wood Mackenzie should not be interpreted as advice and you should not rely on it for any purpose. You may not copy or use this data and information except as expressly permitted by Wood Mackenzie in writing. To the fullest extent permitted by law, Wood Mackenzie accepts no responsibility for your use of this data and information

NATURAL GAS DEMAND, EXPORTS DRIVING DEMAND GROWTH, GROWTH ACROSS ALL SECTORS EXCEPT POWER AND RESIDENTIAL/COMMERCIAL







LOWER 48 NATURAL GAS DEMAND **YEAR-OVER-YEAR (Y-O-Y) DEMAND CHANGE BY SECTOR (2022–2027)**

LOWER-48 NATURAL GAS TOTAL DEMAND BY SECTOR (2022–2027)



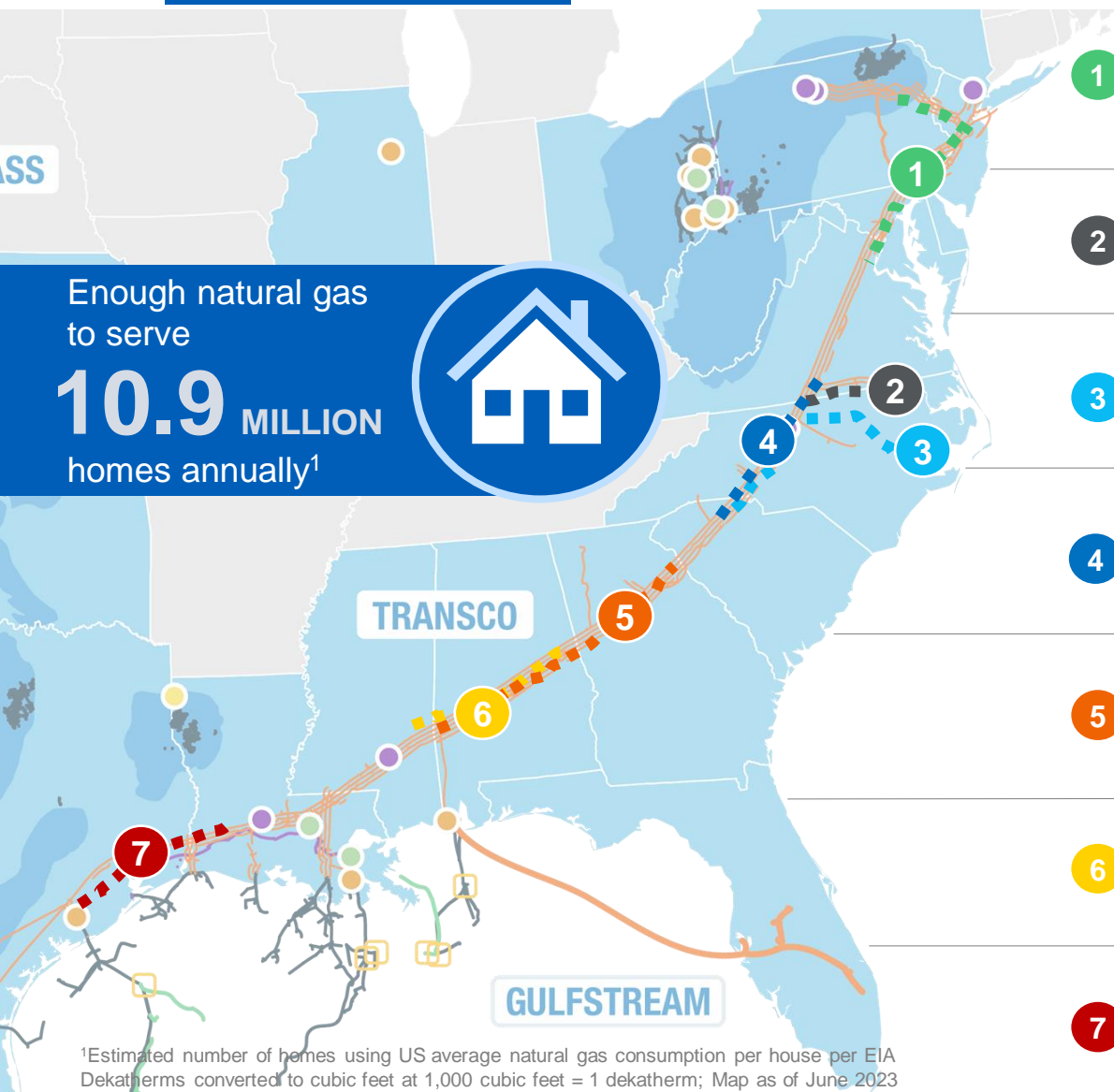
Total Demand Growth
+11.8 Bcf/d
2022–2027

EXPECTED BCF/D GROWTH (2022–2027)

-  LNG Exports, +9.7 Bcf/d
-  Mexican Exports, +1.8 Bcf/d
-  Other/Transport, +0.9 Bcf/d
-  Residential/Commercial, -0.4 Bcf/d
-  Power, -3.3 Bcf/d
-  Industrial (+Blue Hydrogen), +3.1 Bcf/d

Source: Wood Mackenzie Strategic Planning Outlook 2023. Used with permission from Wood Mackenzie

Adding more than 2 Bcf/d of capacity through Transco projects



Enough natural gas to serve
10.9 MILLION homes annually¹



Regional Energy Access

- 1 • 829 MMcf/d serving Res/Com & Power demand in PA, NJ & MD
- Received FERC certificate with expected partial in service 4Q'23 and second half expected in service 4Q'24

Commonwealth Energy Connector

- 2 • 105 MMcf/d serving Res/Com demand in Mid-Atlantic
- Received draft EIS with expected in service date 4Q'25

Southside Reliability Enhancement

- 3 • 423 MMcf/d serving Res/Com demand in Mid-Atlantic
- Received FERC certificate with expected in service date 4Q'24

Carolina Market Link

- 4 • 78 MMcf/d serving Res/Com demand in Mid-Atlantic
- Expected in service date 1Q'24

Alabama Georgia Connector

- 5 • 63.8 MMcf/d serving power and residential demand in GA
- Filed FERC Application with expected in service date 4Q'25

Southeast Energy Connector

- 6 • 150 MMcf/d serving power demand in AL
- Received EA with expected in service date 4Q'24

Texas to Louisiana Energy Pathway

- 7 • 364 MMcf/d serving Gulf Coast LNG exports
- Received EA with expected in service date 1Q'25

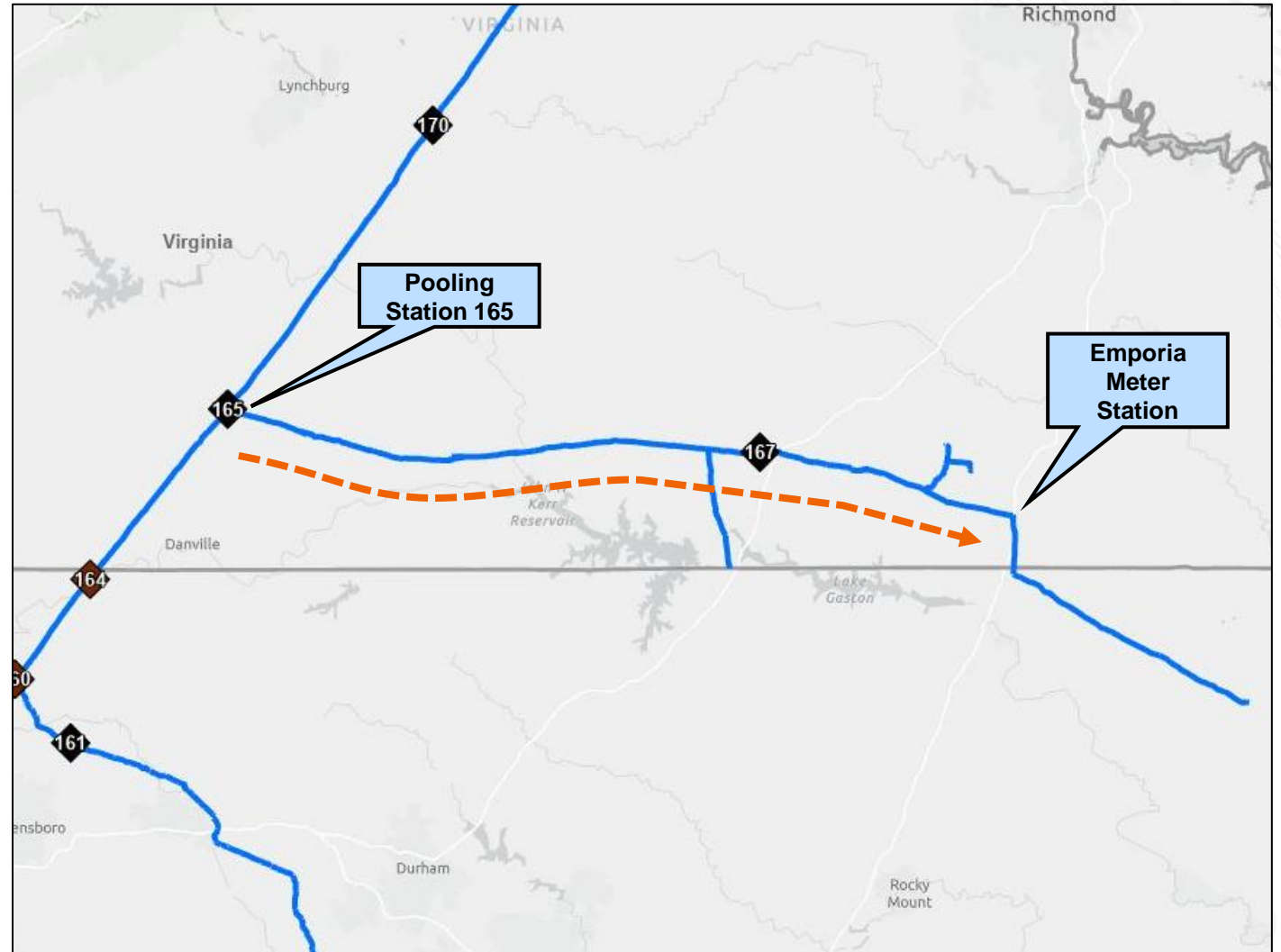
¹Estimated number of homes using US average natural gas consumption per house per EIA Dekatherms converted to cubic feet at 1,000 cubic feet = 1 dekatherm; Map as of June 2023

Commonwealth Energy Connector

South Virginia Lateral Expansion to Interstate Connectivity

Project Facts:

- Path:
 - From Transco's Pooling Station 165 to Transco's existing interconnect with Columbia Gas Transmission at the Emporia delivery meter station
- Capacity: 105 MDth/d
- Received Draft EIS April 2023
- Proposed ISD: 4Q 2025

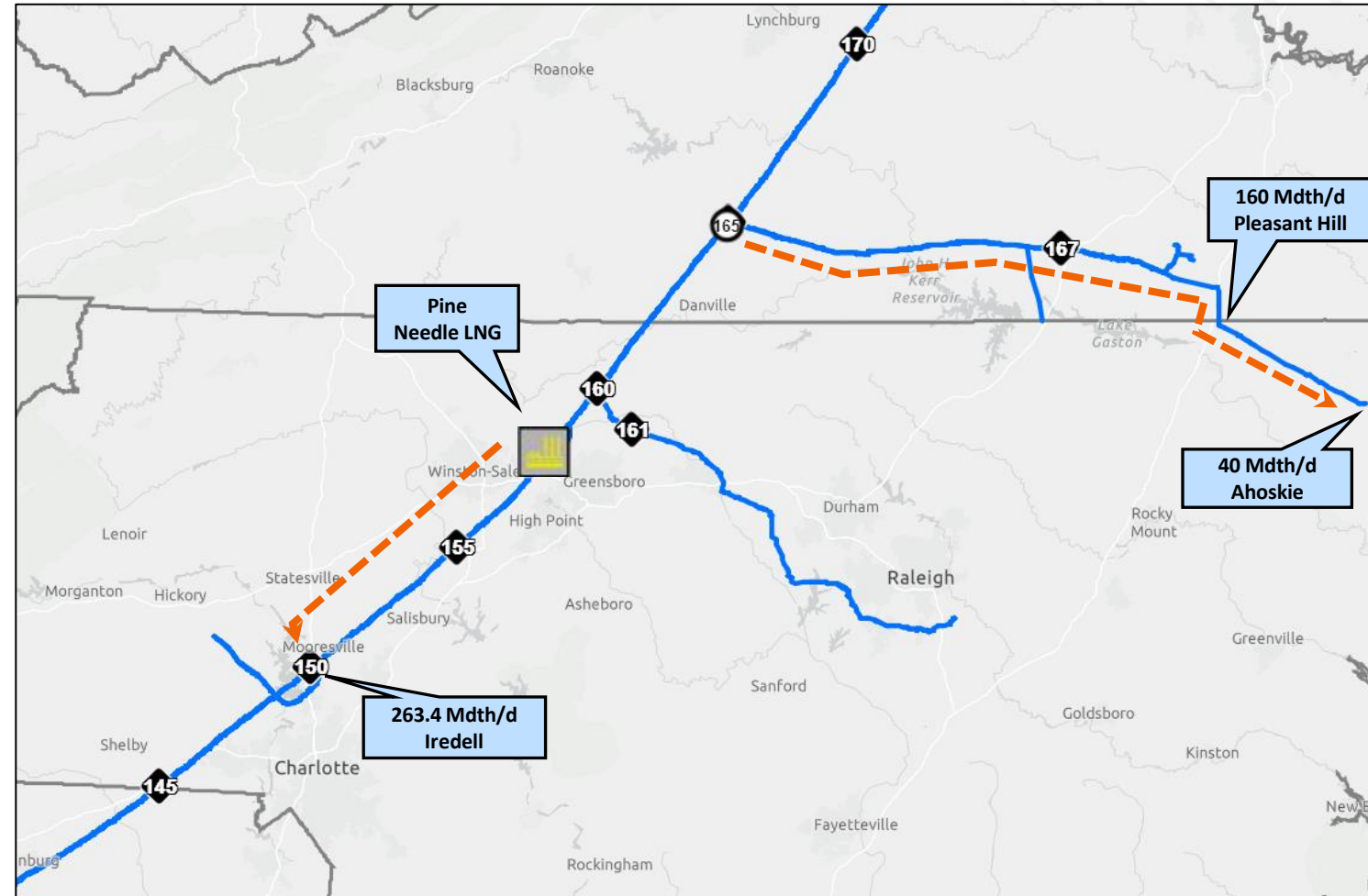


Southside Reliability Enhancement

North Carolina Resiliency and Growth

Project Facts:

- Paths:
 - Path 1 – Transco’s Station 165 Pool and proposed interconnect with MVP to the Ahoskie Delivery
 - Path 2 – Transco’s Station 165 Pool and proposed interconnect with MVP to the Pleasant Hill Delivery
 - Path 3 – Transco’s Pine Needle Interconnect to the Iredell Delivery
- Capacity: 423.4 MDth/d
- Received FERC Order July 2023
- Proposed ISD: 4Q 2024

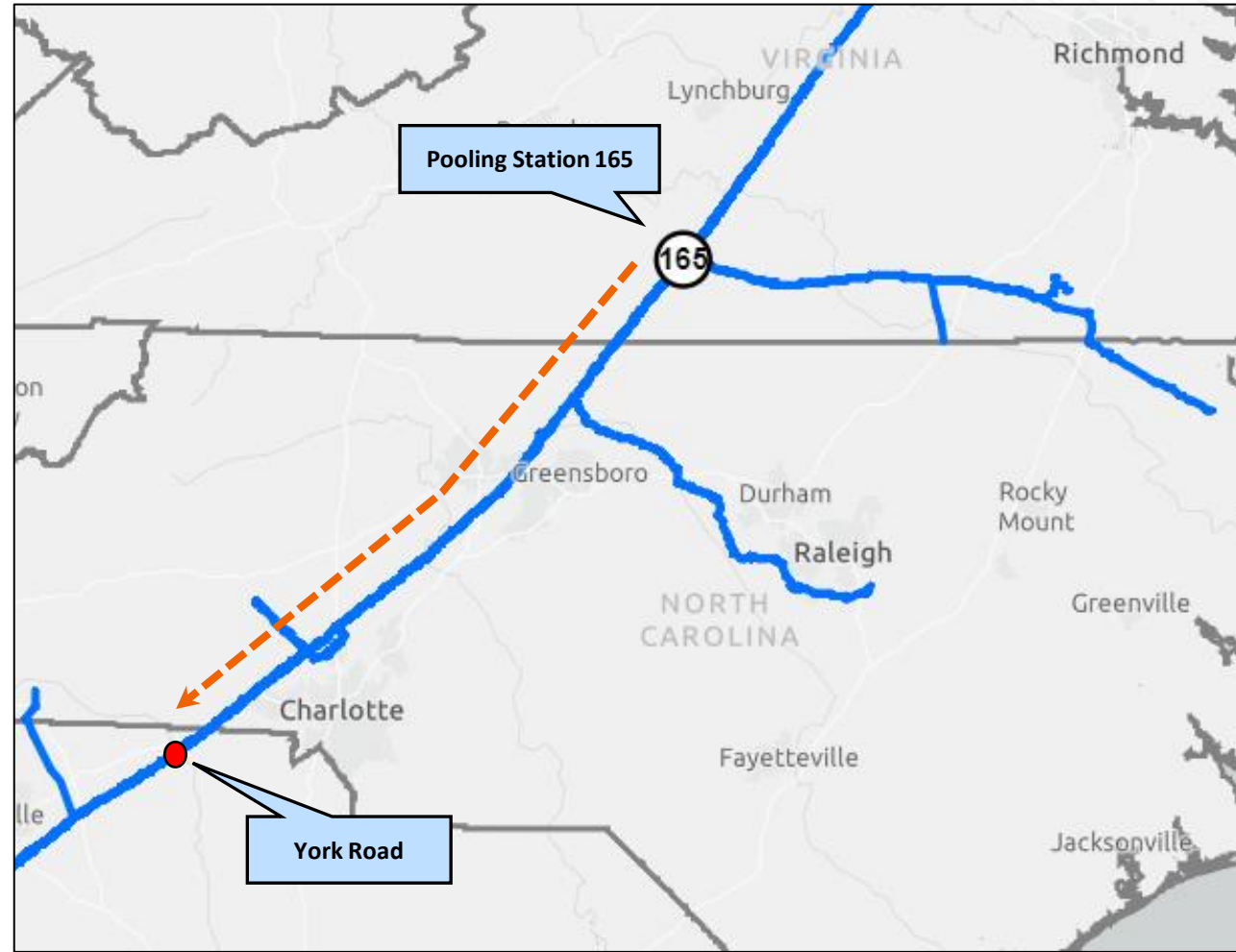


Carolina Market Link

Low Impact Project Serving Industrial and Commercial Growth in SC

Project Facts:

- Path:
 - From Transco's Pooling Station 165 to Transco's existing interconnect at the York Road delivery meter station
- Capacity: 78 MDth/d
- FERC Prior Notice comment/protest period closed August 2023
- Proposed ISD: 1Q 2024

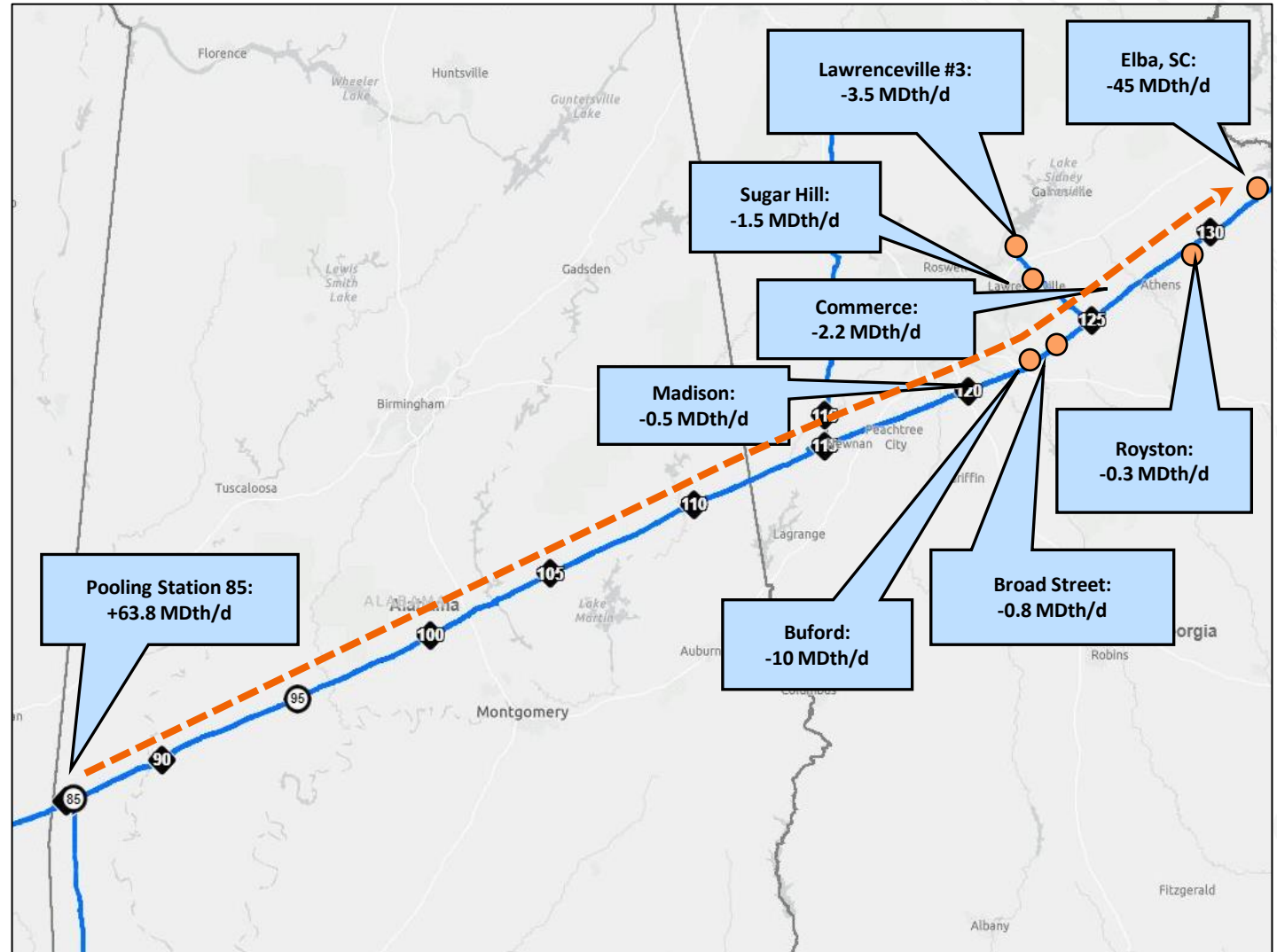


Alabama to Georgia Connector

Meeting end user clean energy demand in Georgia

Project Facts:

- Path:
 - From Pooling Station 85 to various delivery points as far as Elba SC meter station
- Capacity: 63.8 MDth/d
- Filed FERC Application April 2023
- Proposed ISD: 4Q 2025

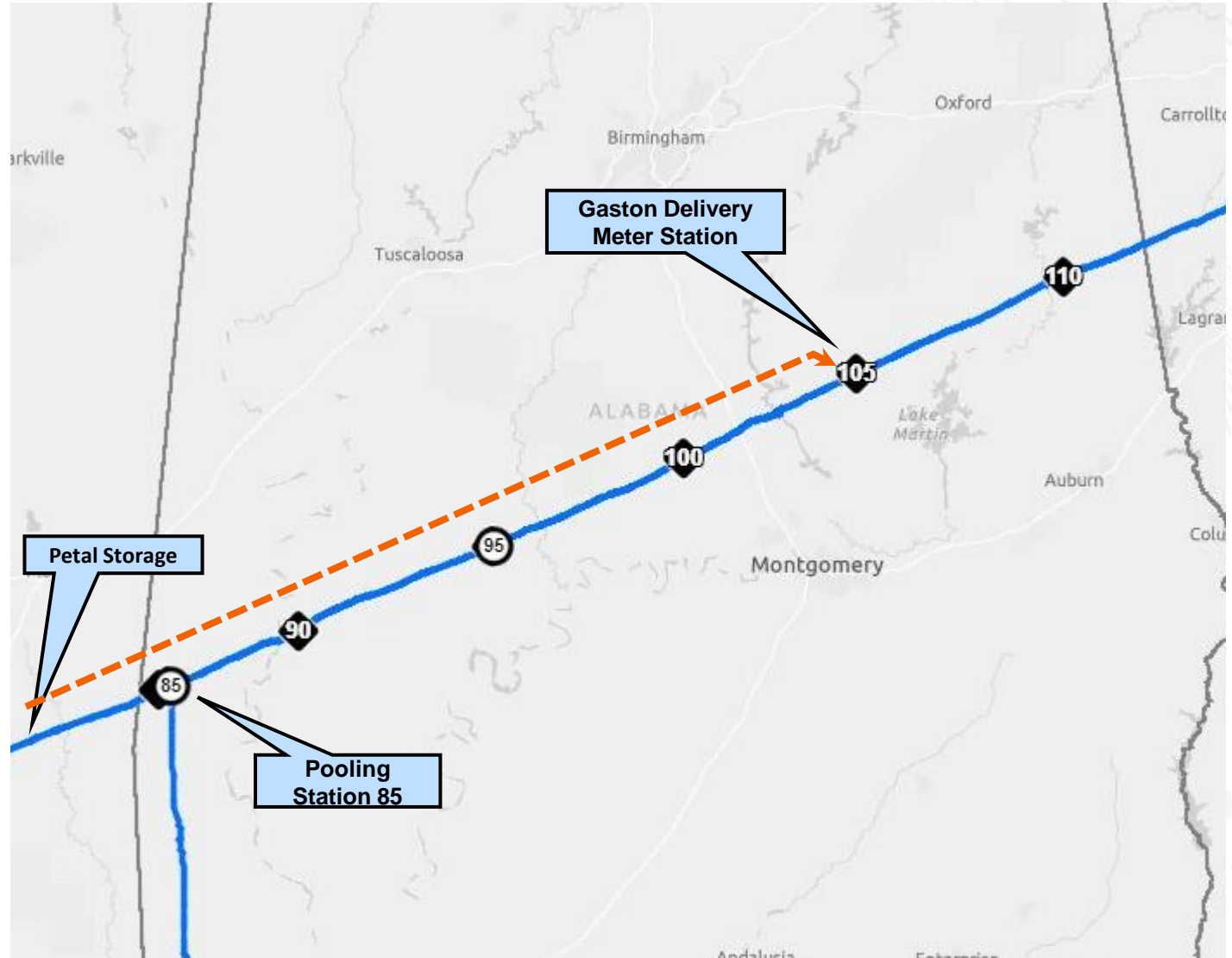


Southeast Energy Connector

Meeting Clean Energy Demand in the Southeast

Project Facts:

- Path:
 - Path 1 – Transco’s Petal Storage interconnect to the Gaston Meter Station
 - Path 2 – Transco’s Station 85 Pool to the Gaston Meter Station
- Capacity: 150 MDth/d
- Received Final EA March 2023
- Proposed ISD: 4Q 2024

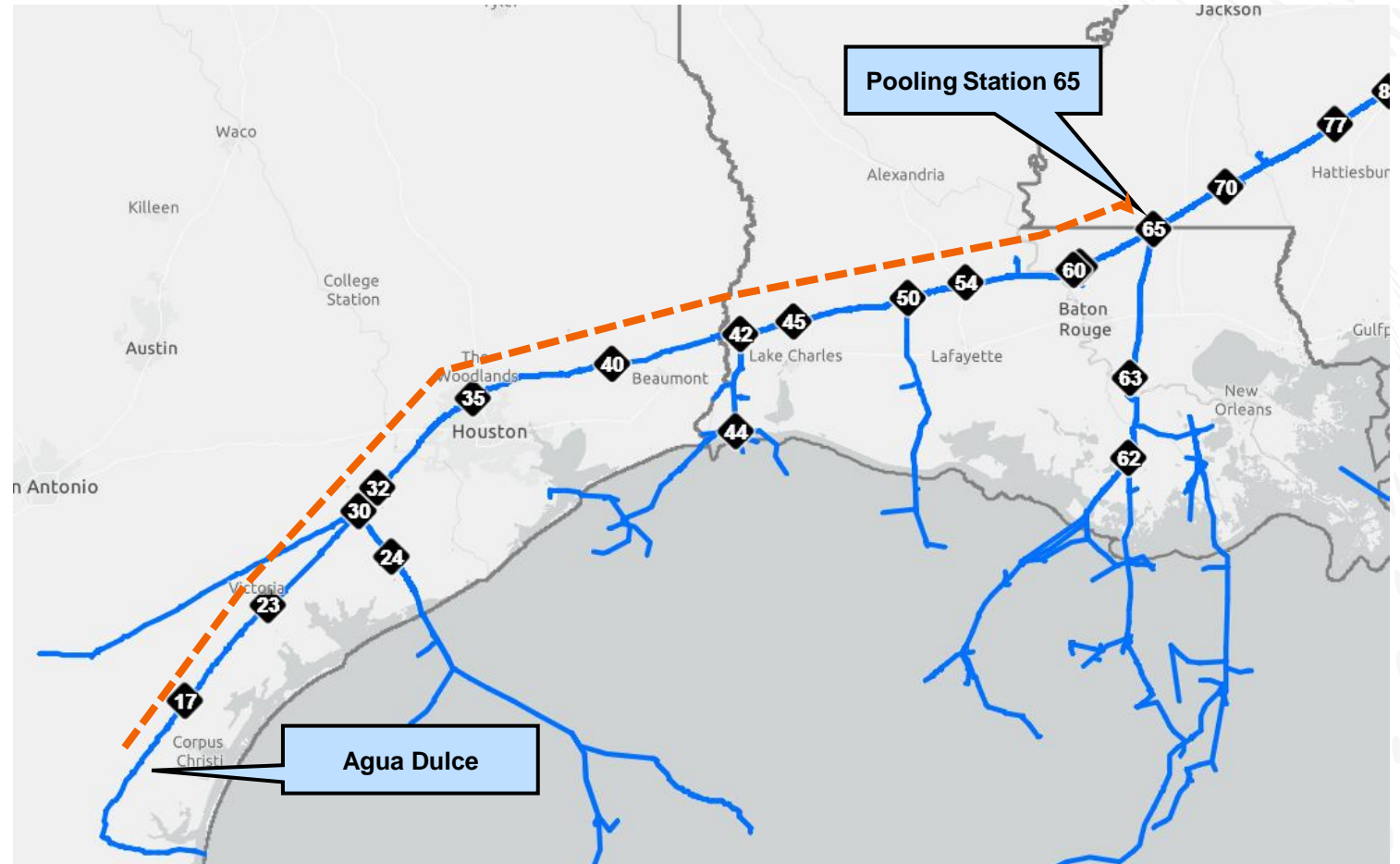


Texas to Louisiana Energy Pathway

Meeting Clean Energy Demand in the Gulf Coast

Project Facts:

- Path:
 - From the Agua Dulce area to Transco's existing Station 65 pool
- Capacity:
 - 364.4 MDth/d
- Received EA in June 2023
- Proposed ISD:
 - Full Project: 1Q 2025



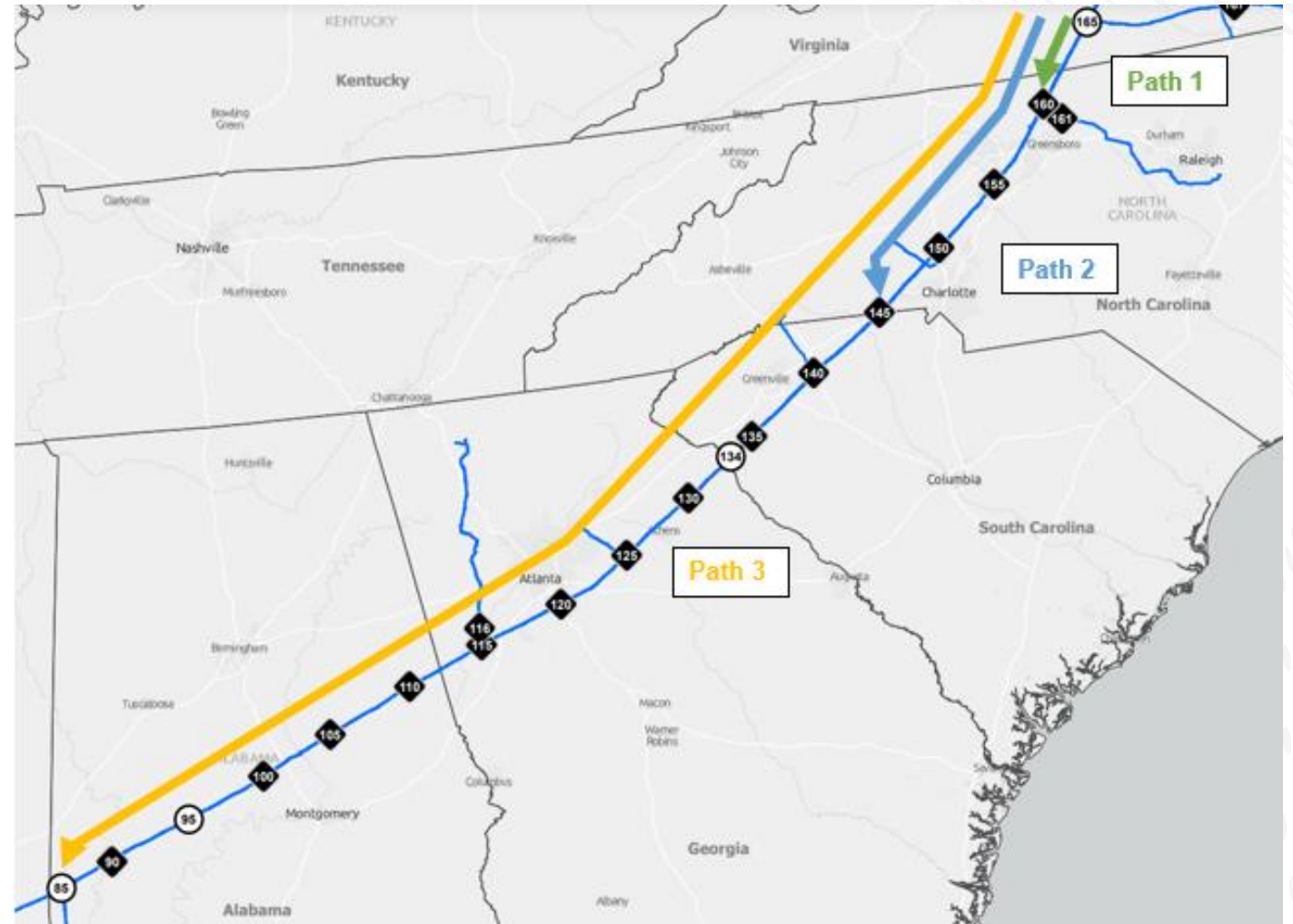
Southeast Supply Enhancement

Connecting MVP Supply to Atlantic Coast & Southeast

Proposed Project: Non-binding open season closed in July 2023; anticipate FID of project in 4Q 2023

Project Facts:

- Path:
 - Path 1 – Transco’s Station 165 pool and MVP Receipt Interconnect to Sta. 160
 - Path 2 - Transco’s Station 165 pool and MVP Receipt Interconnect to Sta. 145
 - Path 3 - Transco’s Station 165 pool and MVP Receipt Interconnect to Sta. 85
- Capacity: TDB
- Anticipate entering FERC pre-filing process 1Q 2024
- Proposed ISD: 4Q 2027



FIND US ONLINE



www.williams.com/newsroom



Facebook.com/WilliamsEnergyCo



[@WilliamsUpdates](https://twitter.com/WilliamsUpdates)



Channel: Williams Energy Company



Linkedin.com/company/Williams-Company



[@williamsenergy](https://instagram.com/williamsenergy)





WE MAKE CLEAN ENERGY HAPPEN®

Thank You & Questions